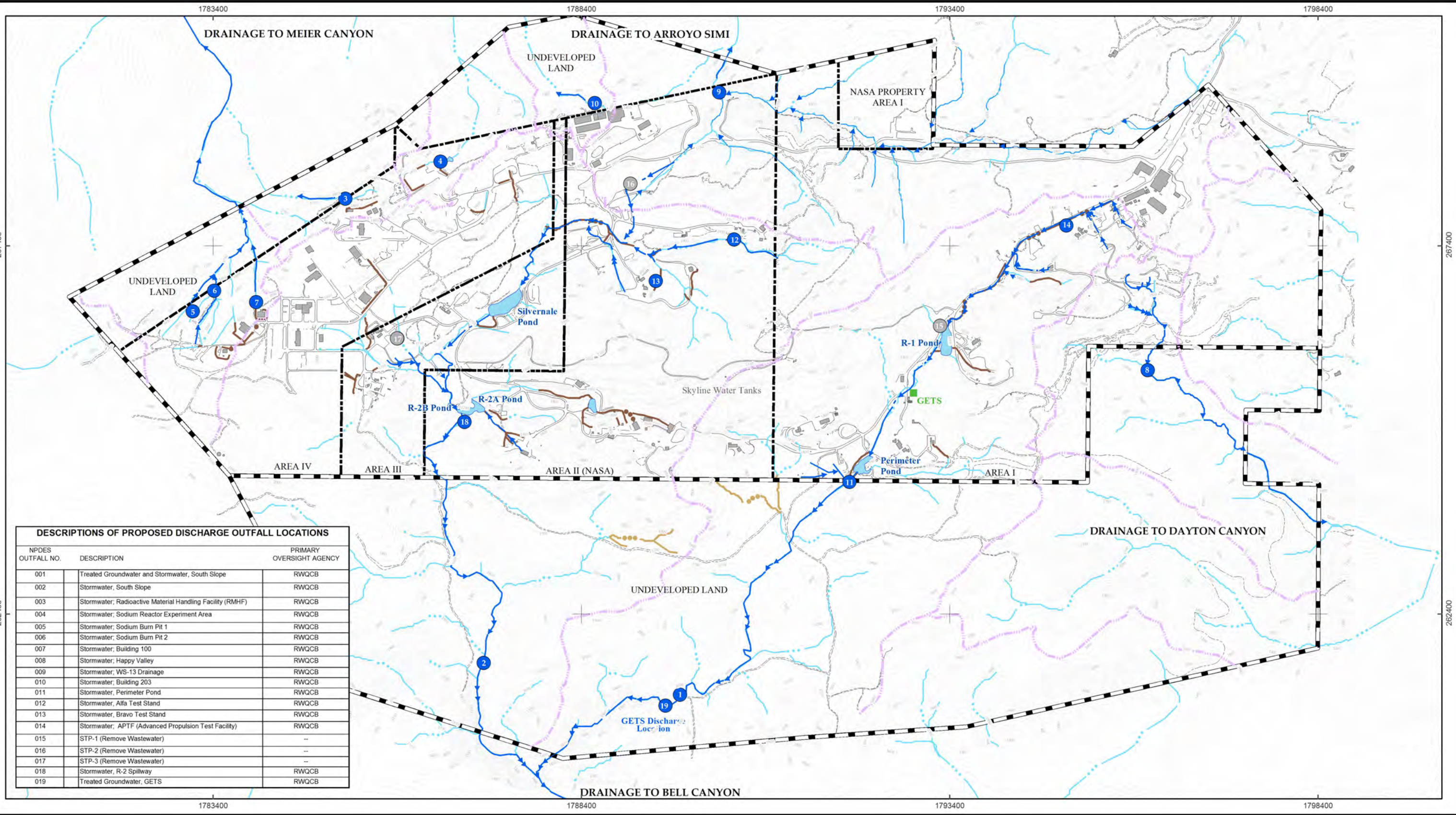
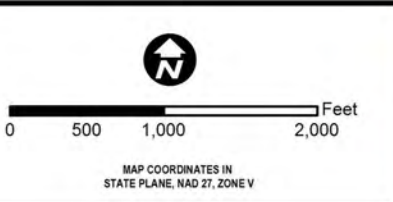


FIGURES



DESCRIPTIONS OF PROPOSED DISCHARGE OUTFALL LOCATIONS		
NPDES OUTFALL NO.	DESCRIPTION	PRIMARY OVERSIGHT AGENCY
001	Treated Groundwater and Stormwater, South Slope	RWQCB
002	Stormwater, South Slope	RWQCB
003	Stormwater; Radioactive Material Handling Facility (RMHF)	RWQCB
004	Stormwater; Sodium Reactor Experiment Area	RWQCB
005	Stormwater; Sodium Burn Pit 1	RWQCB
006	Stormwater; Sodium Burn Pit 2	RWQCB
007	Stormwater; Building 100	RWQCB
008	Stormwater; Happy Valley	RWQCB
009	Stormwater; WS-13 Drainage	RWQCB
010	Stormwater; Building 203	RWQCB
011	Stormwater; Perimeter Pond	RWQCB
012	Stormwater; Alfa Test Stand	RWQCB
013	Stormwater; Bravo Test Stand	RWQCB
014	Stormwater; APTF (Advanced Propulsion Test Facility)	RWQCB
015	STP-1 (Remove Wastewater)	--
016	STP-2 (Remove Wastewater)	--
017	STP-3 (Remove Wastewater)	--
018	Stormwater, R-2 Spillway	RWQCB
019	Treated Groundwater, GETS	RWQCB



Legend

- NPDES Outfalls (RWQCB Primary Oversight Authority)
- Historical NPDES Outfalls
- Groundwater Extraction Treatment System (GETS)
- Surface Water Reclamation Ponds
- Effluent Pathways
- Surface Water Drainage Divide
- Natural Drainage
- Concrete Lined Drainage
- Graded Drainage

**NPDES Permit Compliance
3rd Quarter
2012 Discharge Monitoring Report**

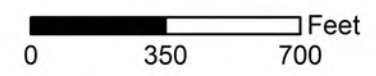
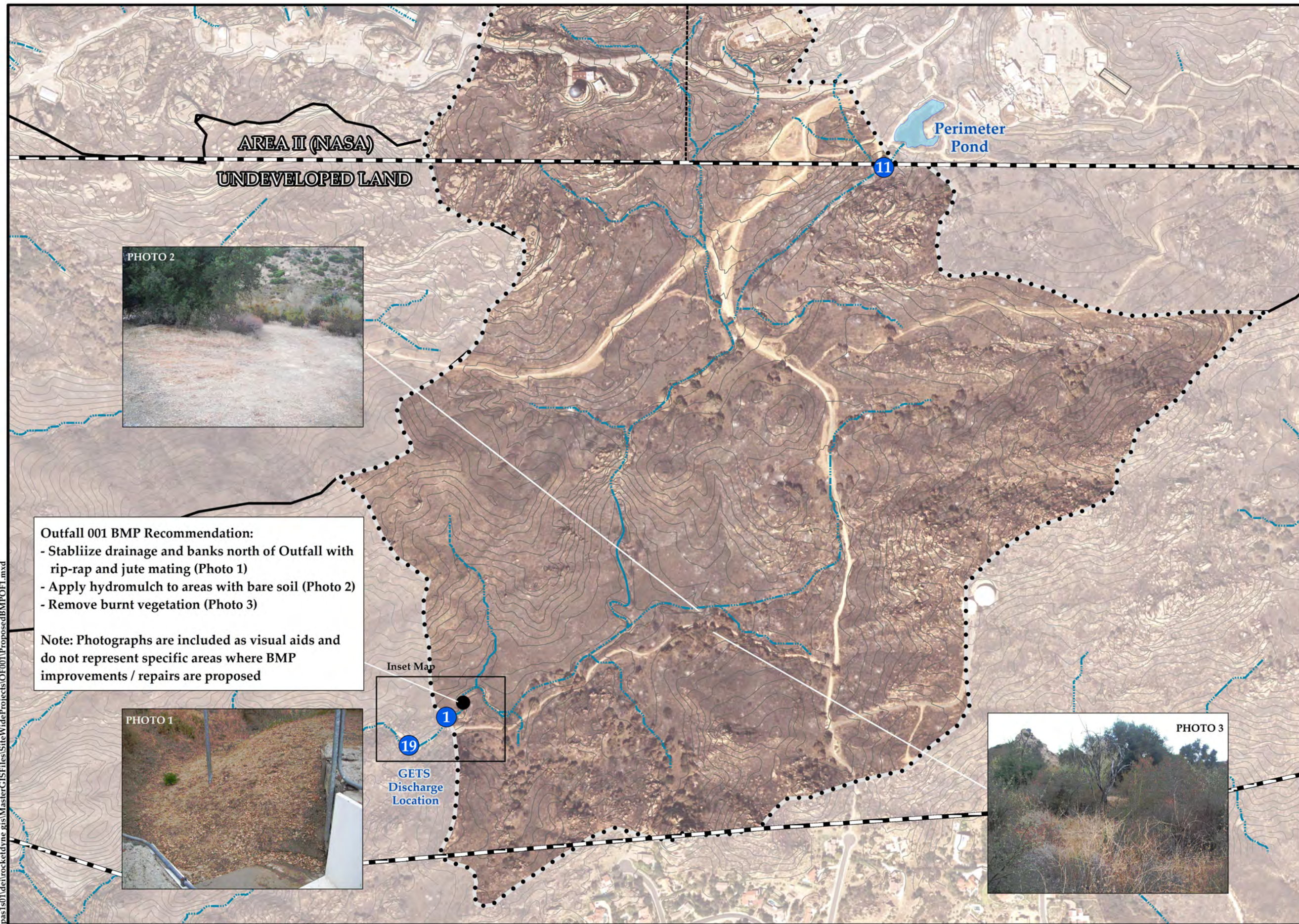
Base Map Legend

- SSFL Property Boundary
- Administrative Area Boundary
- Ground Elevation Contours
- Drainage Pathways
- A/C Curbing
- Dirt Road
- Existing Building or Structure








**Site Map with Outfall Locations
and Storm Water Drainage Systems**

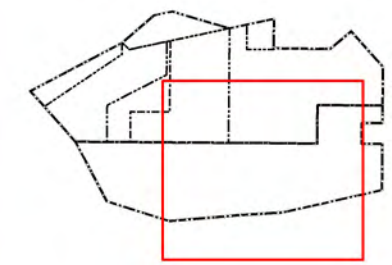
Date: October 26, 2012
 File: \\uspas1n01app1\del\rockedyme.gis\MasterGISFiles\SiteWide\Projects\NPDES\NPDES_StorageWaterDrainage_3rdQ.mxd

FIGURE 1



Legend

-  NPDES Outfall
-  Drainage
-  Administrative Area Boundary
-  Contours (20 ft interval)
-  Surface Water Reclamation Pond
-  Outfall 001 Watershed
-  SSFL Property Boundary



Outfall 001 BMP Recommendation:

- Stabilize drainage and banks north of Outfall with rip-rap and jute matting (Photo 1)
- Apply hydromulch to areas with bare soil (Photo 2)
- Remove burnt vegetation (Photo 3)

Note: Photographs are included as visual aids and do not represent specific areas where BMP improvements / repairs are proposed



TITLE:
**Proposed BMPs
Outfall 001 Watershed**



PROJECT:
**NPDES COMPLIANCE
3rd QUARTER 2012 DMR**

DATE:
AUGUST 2012

FIGURE:
2

Document Path: \\uspas1s01delivrock\etd\gms\MasterGISFiles\SiteWide\Projects\0F001\ProposedBMP\POFI.mxd

ISRA Site Location Map

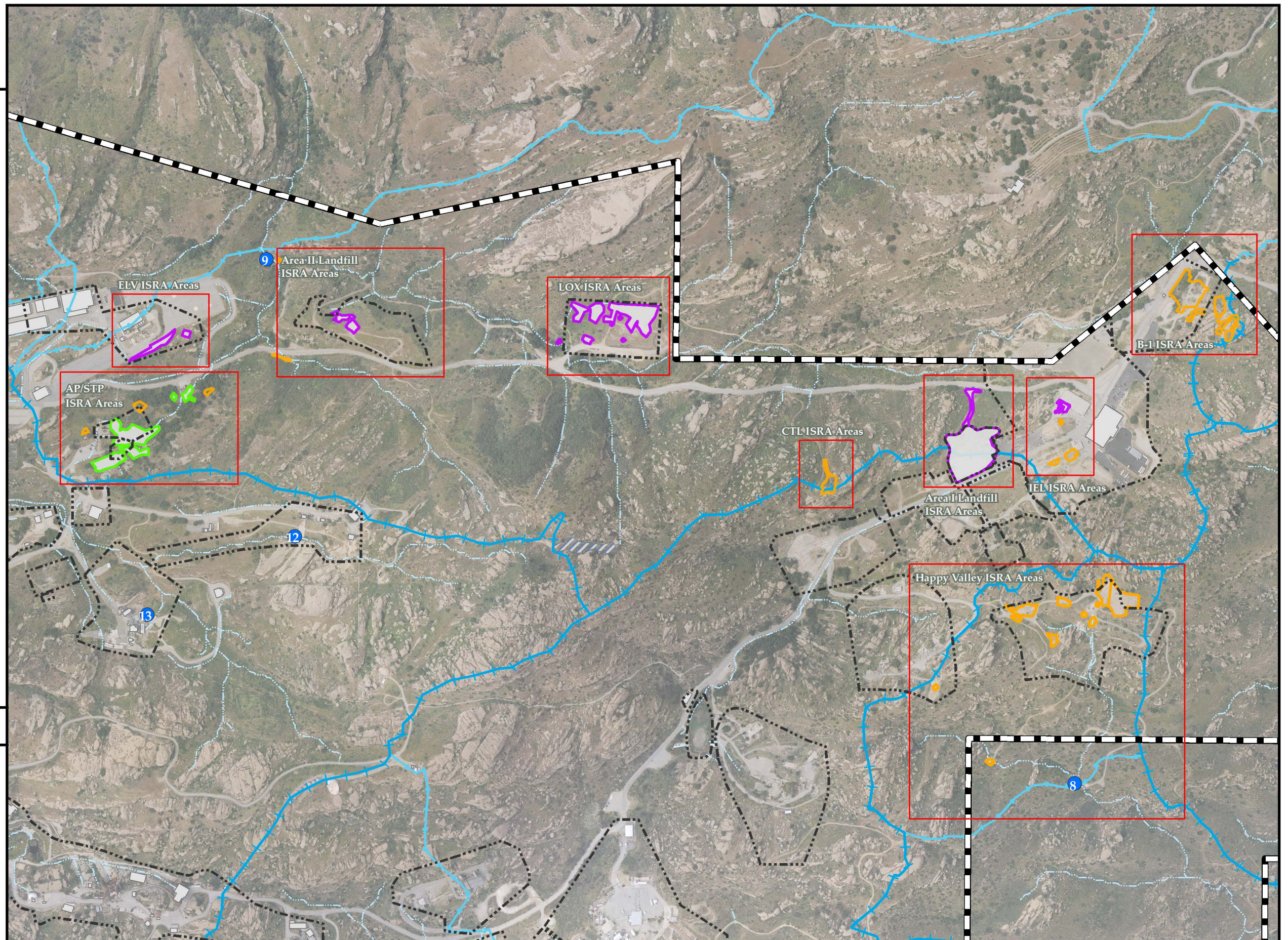
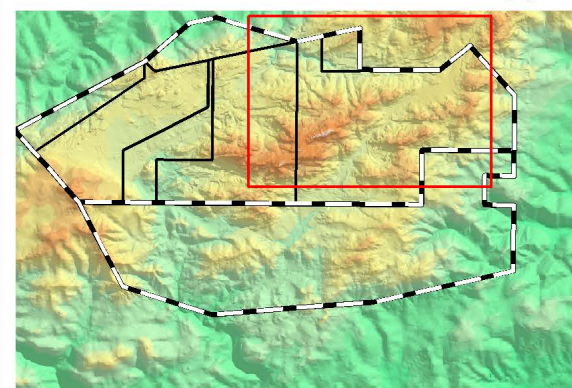
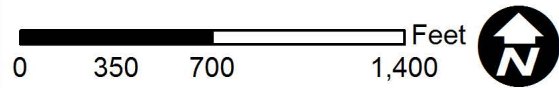
Base Map Legend

-  Administrative Area Boundary
-  RFI Site Boundary
-  ISRA Completed Excavation Area
-  Planned ISRA Excavation Area
-  ISRA Area with Remediation In-Progress
-  ISRA Soil Borrow Area
-  Existing Building or Structure
-  Major Surface Water Divide
-  Minor Surface Water Divide
-  Surface Water Drainage
-  NPDES Outfall

CTL - Component Testing Lab
 LOX - Liquid Oxygen
 ELV - Expandable Launch Vehicle
 IEL - Instrument and Equipment Lab
 AP/STP - Ashpile / Sewage Treatment Plant

Aerial imagery from 2010 Sage Consulting.

Date: November 1, 2012

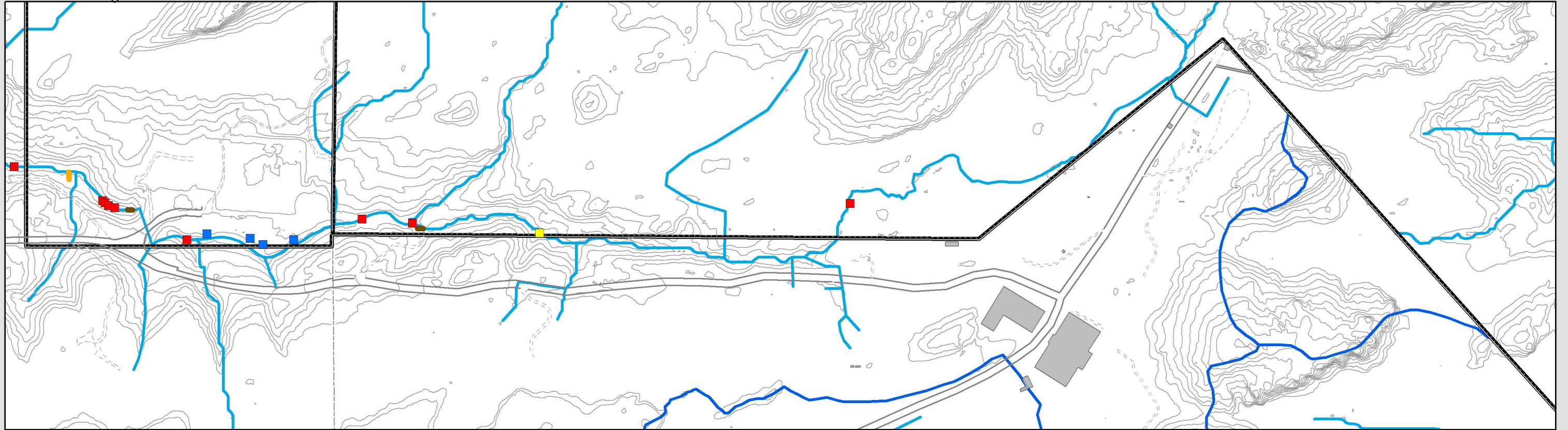


SANTA SUSANA FIELD LABORATORY

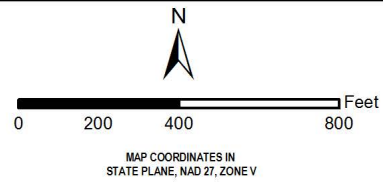
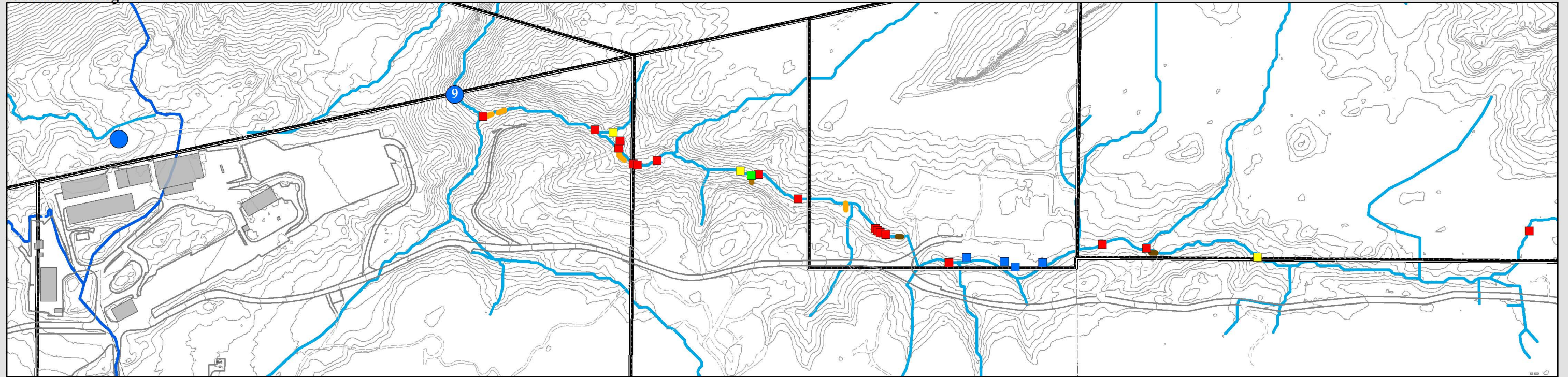
NPDES COMPLIANCE
 3rd QUARTER 2012 DMR

 **MWH** FIGURE 3

Northern Drainage East



Northern Drainage West



RMMP - Restoration Mitigation Monitoring Plan

- Check Structure - Mostly natural sandstone, some rip rap
- Check Structure - Rip Rap
- Check Structure - Vegetated rip rap
- Slope drain with underlying check structure and energy dissipating gravel at influent end

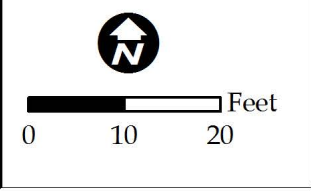
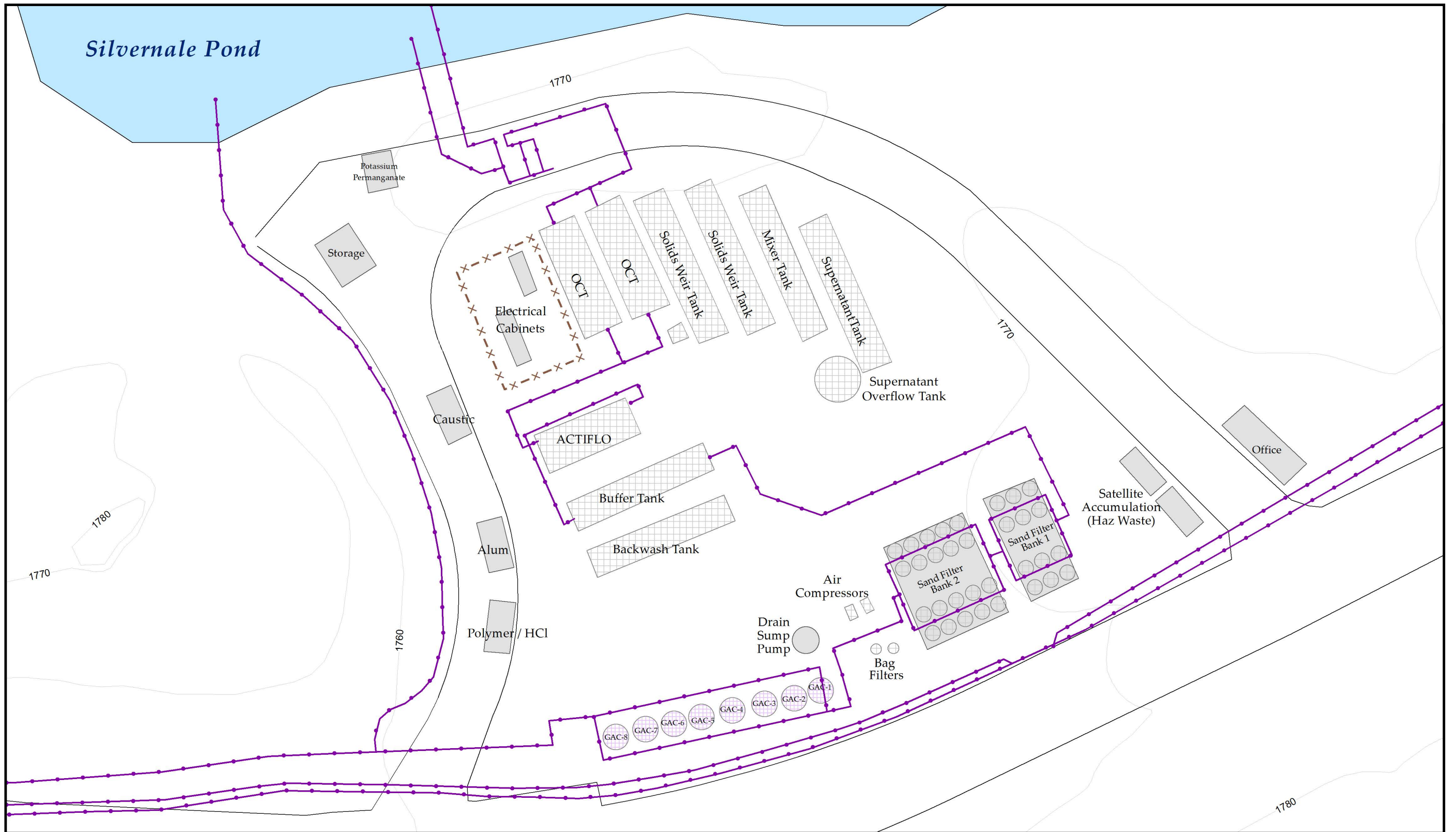
- Energy dissipating rip rap; no gravel no vegetation
- Geo-Cell with gravel
- Grouted and vegetated rip rap energy dissipater
- NPDES Outfalls (RWQCB Primary Oversight Authority)

- Surface Divide
- Drainage
- Site Areas
- RFI Groups

- Existing Structure
- Dirt Road
- Paved Road
- Unpaved trail
- 10 ft Contours

Northern Drainage RMMP Location Figure

Date: October 30, 2012
 File: \\Usps1a01\del\rocketdyme.gis\MasterGISFiles\SiteWideProjects\DMRSubmittalOct2012\ND.mxd



Base Map Legend

— Roads	■ Pond
---------	--------

Stormwater Treatment System Infrastructure

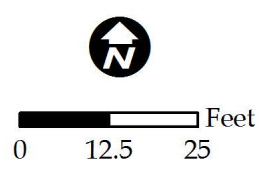
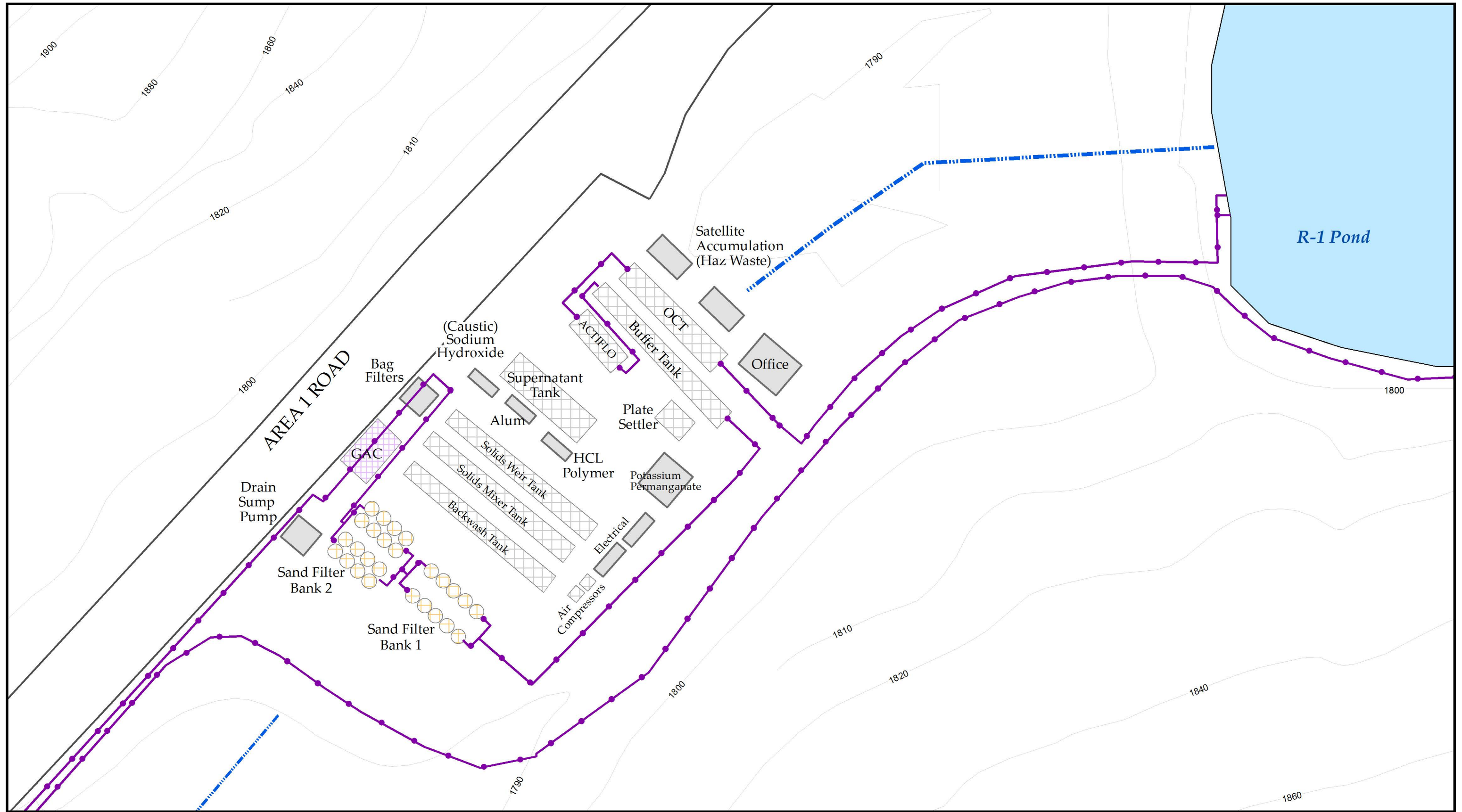
—●— Pipe Corridor	▨ Tank
×-× Fence	■ Building or Structure

**NPDES Permit Compliance
3rd Quarter
2012 Discharge Monitoring Report**

Outfall 18 Stormwater Treatment System

Date: October 26, 2012
 File: \\Uspas1s01\dei\rocketdyne gis\MasterGISFiles\ISRA_Projects\ISRA_MXD\BMP\CompliancePlanSept2010\FigC3_OF18_BMP_3rdQ.mxd

	FIGURE 5
--	---------------------



Base Map Legend		Stormwater Treatment System Infrastructure	
	Roads		Pipe Corridor
	Surface Water Drainage		Tank
	Pond		Sand Filter
			Granular Activated Carbon Vessel
			Building or Structure

**NPDES Permit Compliance
3rd Quarter
2012 Discharge Monitoring Report**

Outfall 11 Stormwater Treatment System

Date: October 24, 2012
 File: \\Uspas1s01\dei\rocketdyne gis\Master GISFiles\ISRA_Projects\ISRA_MXD\BMP\Compliance Plan\Sept2010\FigC2_OF11_BMP_3rdQ.mxd

