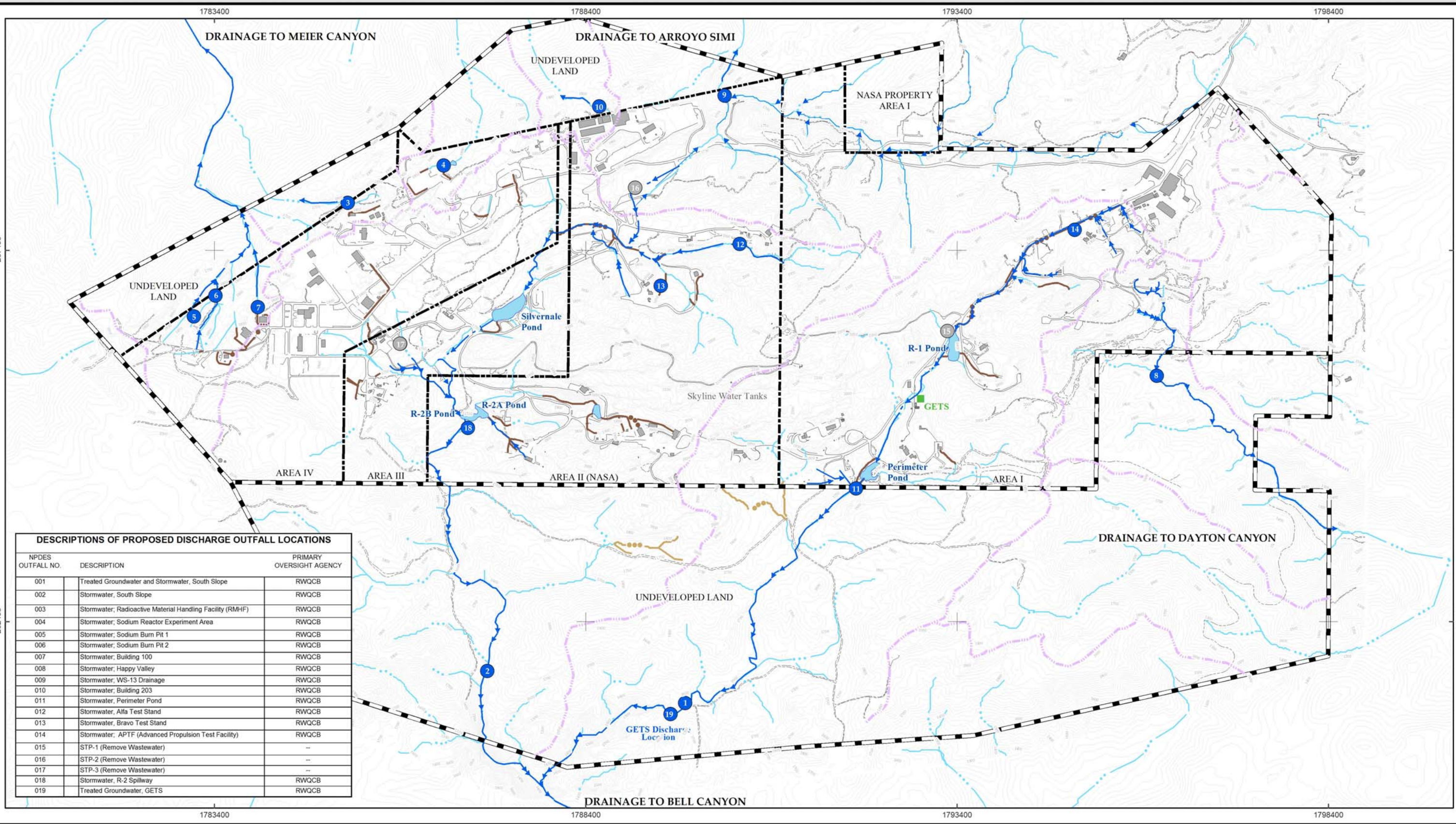
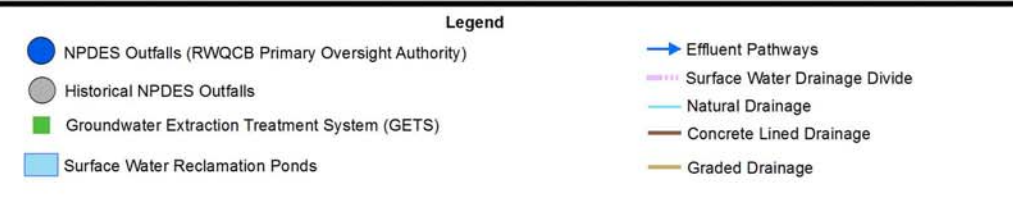
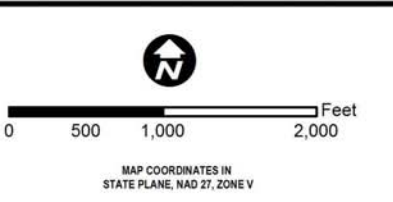


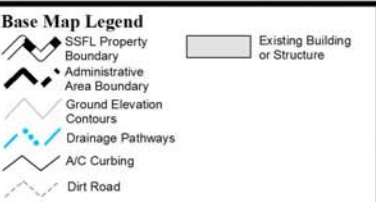
FIGURES

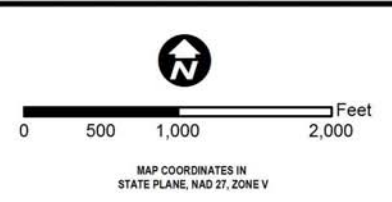
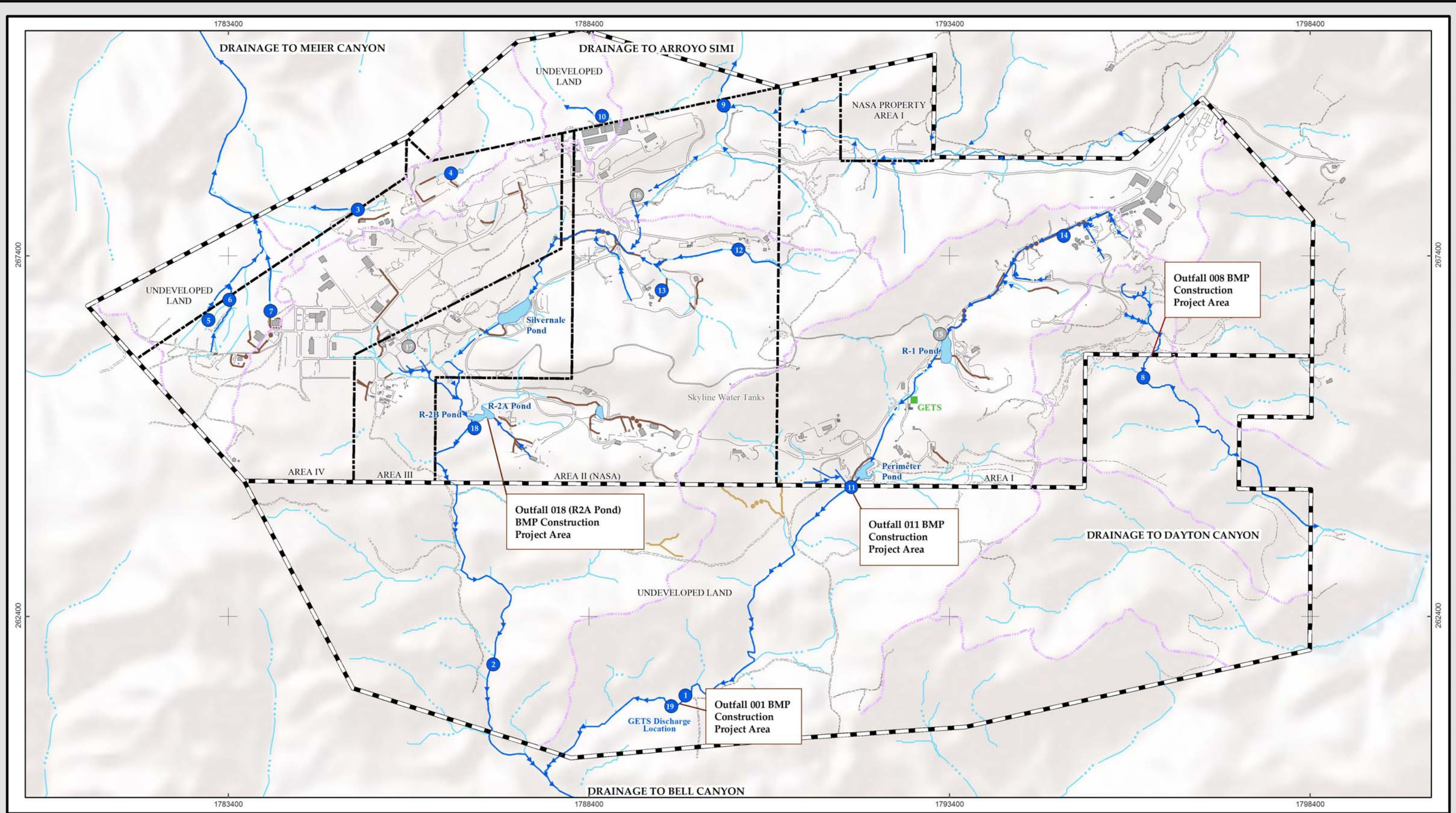


DESCRIPTIONS OF PROPOSED DISCHARGE OUTFALL LOCATIONS		
NPDES OUTFALL NO.	DESCRIPTION	PRIMARY OVERSIGHT AGENCY
001	Treated Groundwater and Stormwater, South Slope	RWQCB
002	Stormwater, South Slope	RWQCB
003	Stormwater; Radioactive Material Handling Facility (RMHF)	RWQCB
004	Stormwater; Sodium Reactor Experiment Area	RWQCB
005	Stormwater; Sodium Burn Pit 1	RWQCB
006	Stormwater; Sodium Burn Pit 2	RWQCB
007	Stormwater; Building 100	RWQCB
008	Stormwater; Happy Valley	RWQCB
009	Stormwater; WS-13 Drainage	RWQCB
010	Stormwater; Building 203	RWQCB
011	Stormwater; Perimeter Pond	RWQCB
012	Stormwater; Alfa Test Stand	RWQCB
013	Stormwater; Bravo Test Stand	RWQCB
014	Stormwater; APTF (Advanced Propulsion Test Facility)	RWQCB
015	STP-1 (Remove Wastewater)	--
016	STP-2 (Remove Wastewater)	--
017	STP-3 (Remove Wastewater)	--
018	Stormwater, R-2 Spillway	RWQCB
019	Treated Groundwater, GETS	RWQCB



**NPDES Permit Compliance
4th Quarter
2012 Discharge Monitoring Report**





Legend	
●	NPDES Outfalls (RWQCB Primary Oversight Authority)
●	Historical NPDES Outfalls
■	Groundwater Extraction Treatment System (GETS)
■	Surface Water Reclamation Ponds
→	Effluent Pathways
---	Surface Water Drainage Divide
---	Natural Drainage
---	Concrete Lined Drainage
---	Graded Drainage

NPDES Permit Compliance
4th Quarter
2012 Discharge Monitoring Report

Base Map Legend	
	SSFL Property Boundary
	Administrative Area Boundary
	Ground Elevation Contours
	Drainage Pathways
	A/C Curbing
	Dirt Road
	Existing Building or Structure

**Site Map with BMP Construction Areas,
 Outfall Locations and Storm Water Drainages**

Date: January 25, 2013
 File: \\Uspas101\del\mcktdyne.gis\MasterGISFiles\SiteWideProjects\NPDES\NPDES_StorageWaterDrainage_4Q2012.mxd

FIGURE 2

ISRA Site Location Map

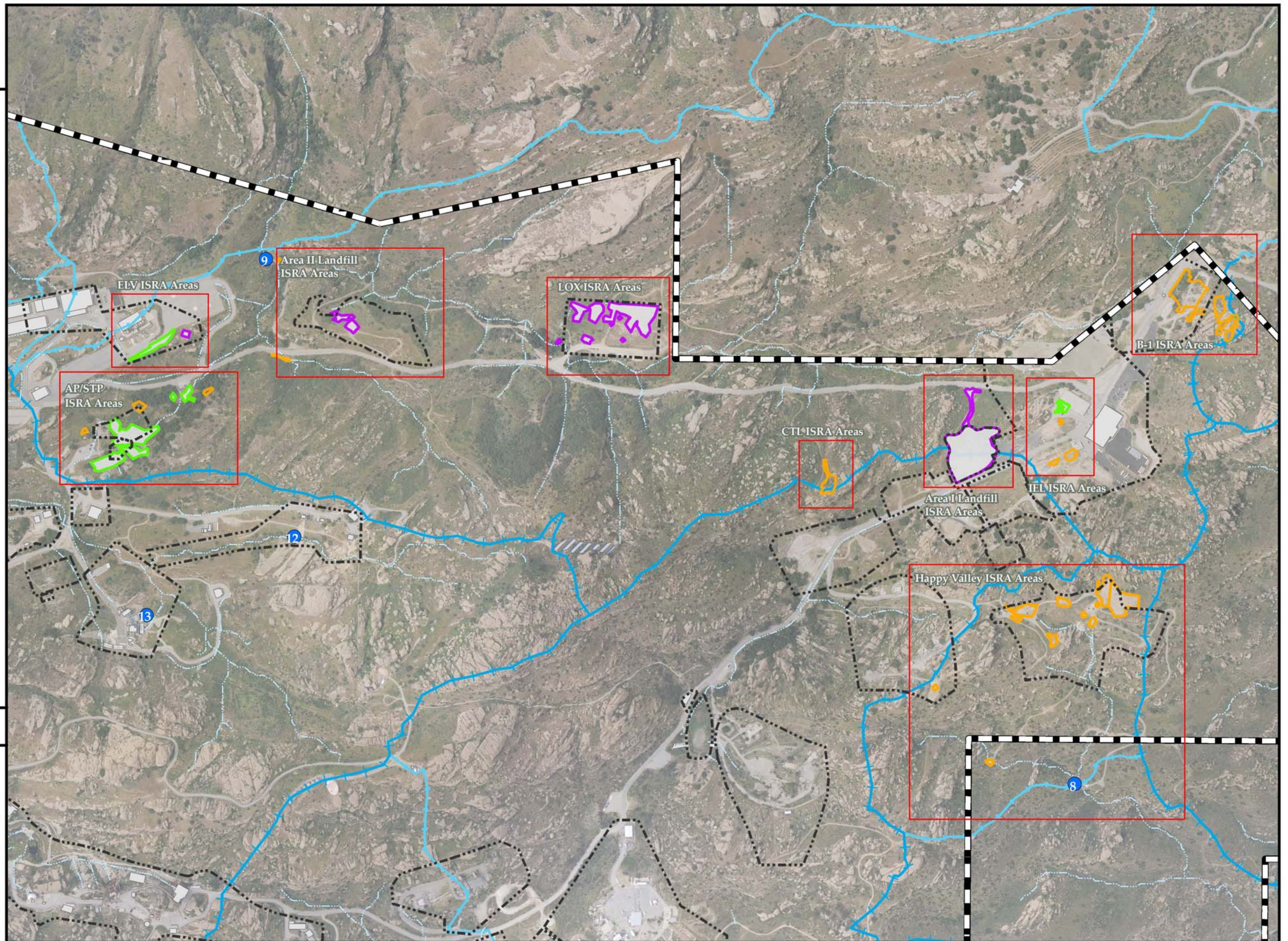
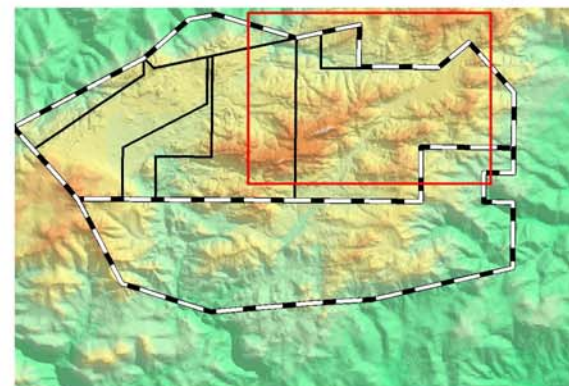
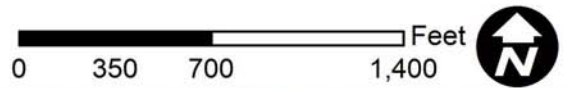
Base Map Legend

-  Administrative Area Boundary
-  RFI Site Boundary
-  ISRA Completed Excavation Area
-  Planned ISRA Excavation Area
-  ISRA Area with Remediation In-Progress
-  ISRA Soil Borrow Area
-  Existing Building or Structure
-  Major Surface Water Divide
-  Minor Surface Water Divide
-  Surface Water Drainage
-  NPDES Outfall

CTL - Component Testing Lab
 LOX - Liquid Oxygen
 ELV - Expandable Launch Vehicle
 IEL - Instrument and Equipment Lab
 AP/STP - Ashpile / Sewage Treatment Plant

Aerial imagery from 2010 Sage Consulting.

Date: January 25, 2013

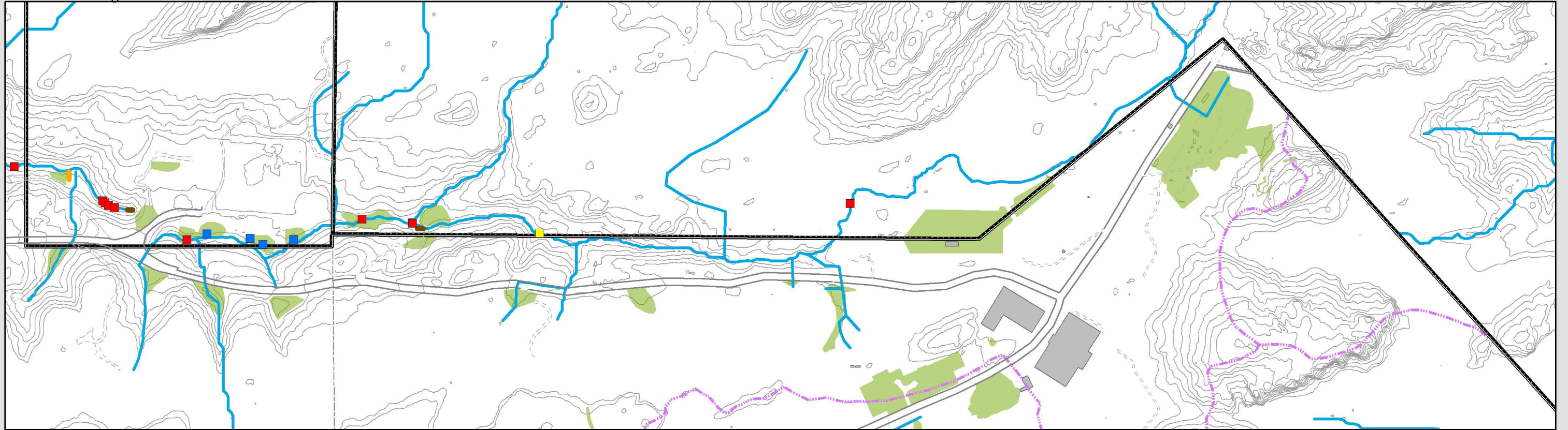


SANTA SUSANA FIELD LABORATORY

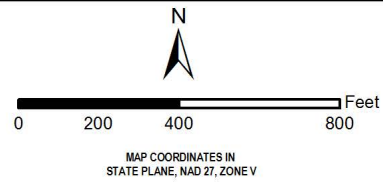
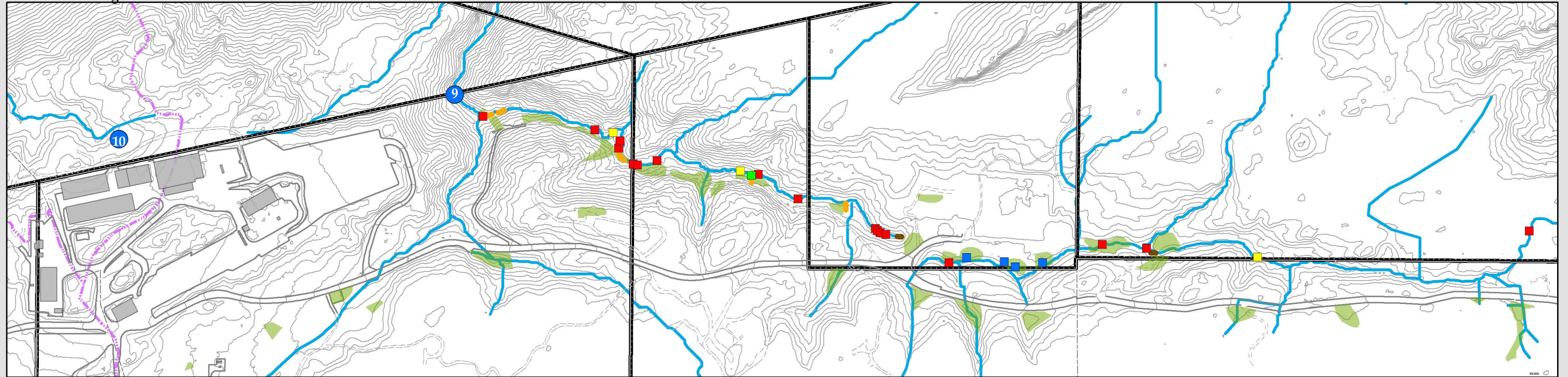
NPDES COMPLIANCE
 4th QUARTER 2012 DMR

 **MWH** FIGURE 3

Northern Drainage East



Northern Drainage West



RMMP - Restoration Mitigation Monitoring Plan

- Check Structure - Mostly natural sandstone, some rip rap
- Check Structure - Rip Rap
- Check Structure - Vegetated rip rap
- Slope drain with underlying check structure and energy dissipating gravel at influent end

- Energy dissipating rip rap; no gravel no vegetation
- Geo-Cell with gravel
- Grouted and vegetated rip rap energy dissipater
- NPDES Outfalls (RWQCB Primary Oversight Authority)
- Hydroseed

- Surface Divide
- Drainage
- Site Areas
- RFI Groups
- Existing Structure
- Dirt Road
- Paved Road
- Unpaved trail
- 10 ft Contours

Northern Drainage RMMP Location Figure

Date: February 13, 2013
 File: \\Usps1a01\del\rocketdyme.gis\MasterGISFiles\SiteWideProjects\DMRSubmittalOct2012\ND.mxd