

APPENDIX J

SWPP SAMPLE RESULTS

TABLE J-1
SWPPP Sample Results
(Page 1 of 1)

Table J-1

Sample Name	Sample Date	Analytes	Units	NPDES Benchmark Limit	Result
OUTFALL 008 (HVS-2C Down Gradient)					
HZSW0001S001	10/14/09	Lead	ug/L	5.2	14
HZSW0002S001	10/14/09	Copper	ug/L	14	330
OUTFALL 009 (A2LF-3/CM-1 Culvert Down Gradient)					
A2SW0005S001	12/11/09	Lead	ug/L	5.2	4.5
A2SW0005S001	12/11/09	TCDD TEQ_NoDNQ	ug/L	2.80E-08	2.33E-06
A2SW0005S001	12/11/09	Total Suspended Solids	mg/L	--	11

Notes:

Results in **bold** exceed the established NPDES benchmark limits











ug/L = micrograms per liter

mg/L = milligrams per liter

-- = No NPDES benchmark limit established

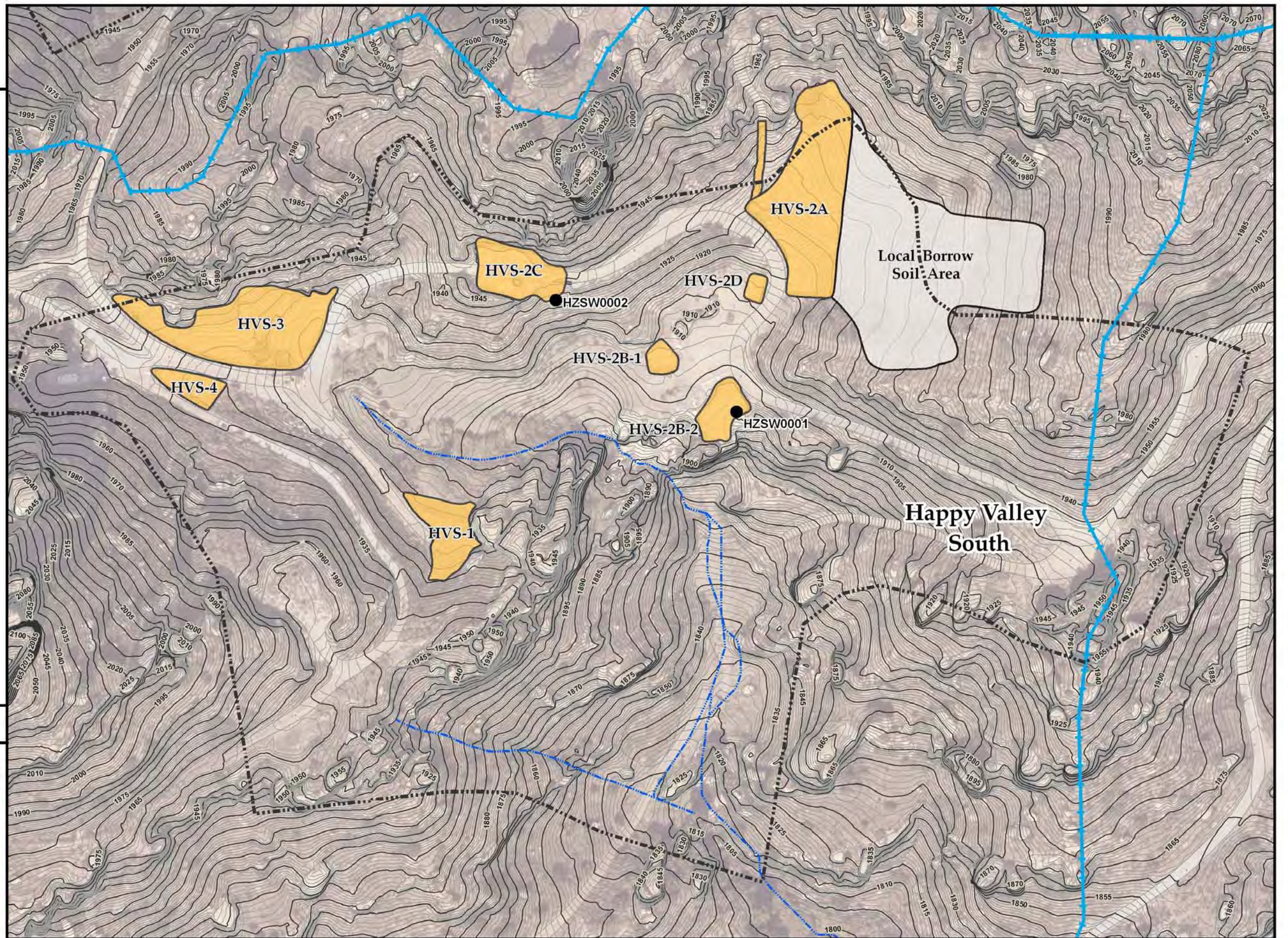
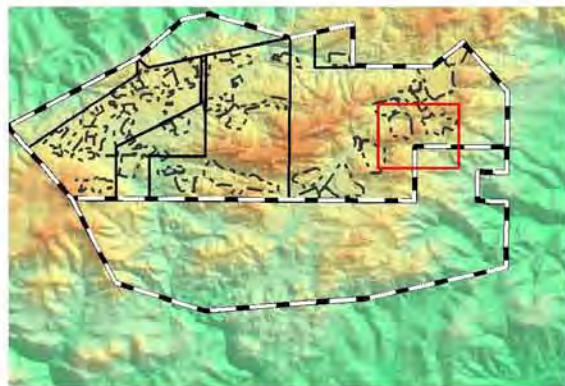
Outfall 008, SWPPP Surface Water Sample Locations

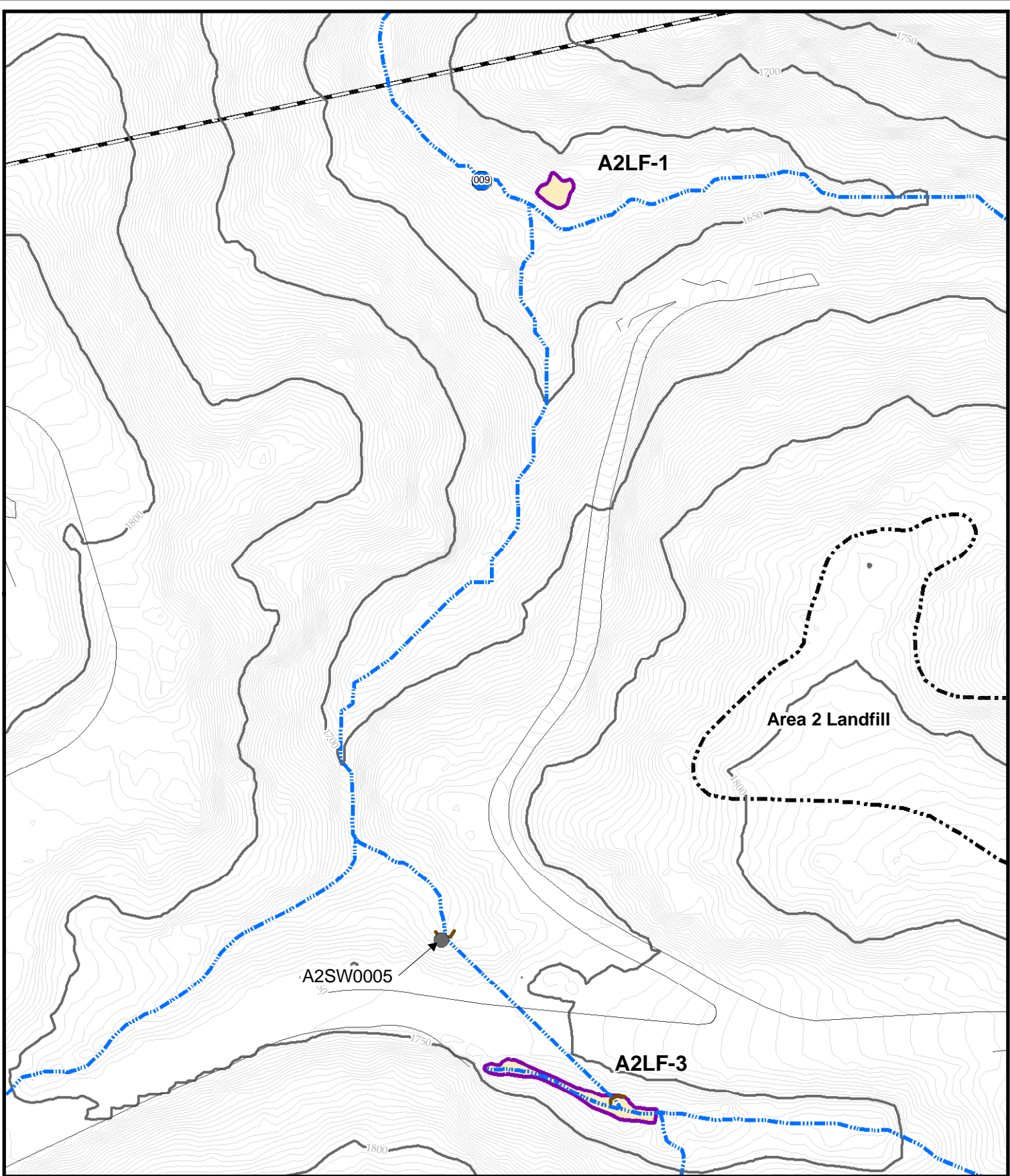
Base Map Legend

-  Administrative Area Boundary
-  RFI Site Boundary
-  Existing Building or Structure
-  Final 2009 ISRA Excavation Extent
-  Local Borrow Source Area
-  Surface Water Divide
-  Outfall Water Divide
-  Surface Water Drainage
-  NPDES Outfall
-  SWPPP Sample









Note:
1. Aerial imagery from Sage, November 2009.
2. Topographic contours from Sage, November 2009.

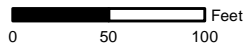
Date: December 4, 2009





Base Map Legend

-  Administrative Area Boundary
-  RFI Site Boundary
-  Actual Excavation
-  A/C Paving
-  NPDES Outfall
-  Drainage
-  Surface Water Divide
-  Elevation Contour



**Outfall 009
SWPPP Figure**



MWH

FIGURE J-2