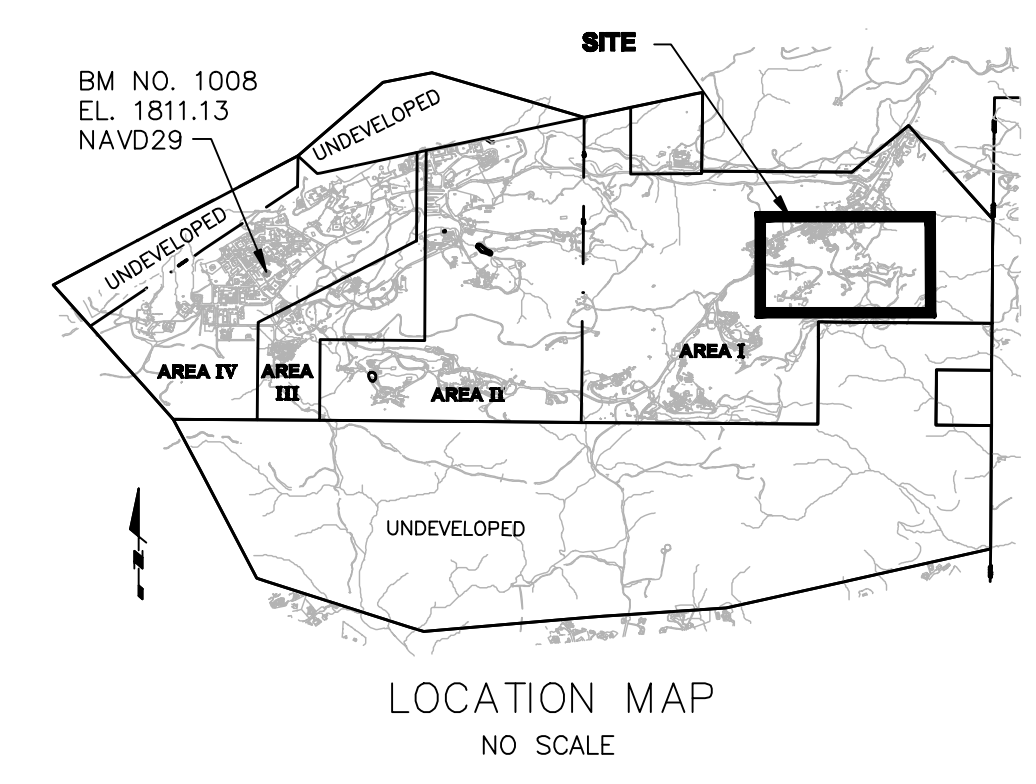


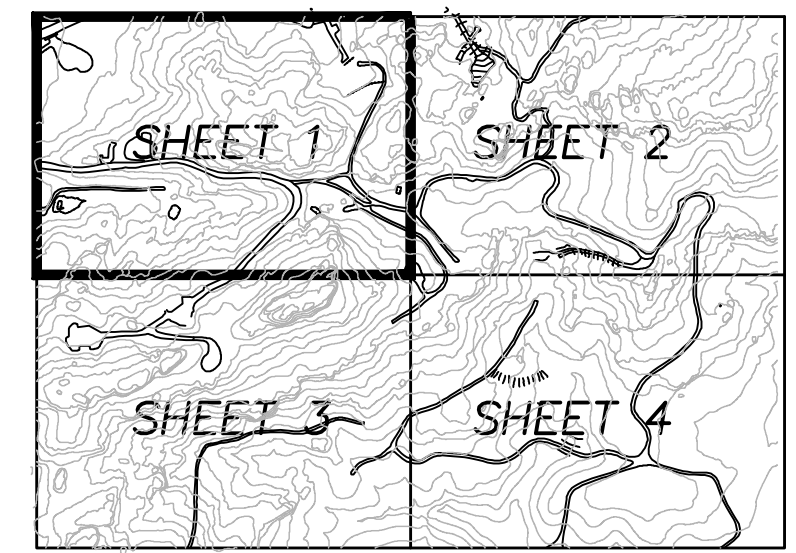
LEGEND

—1765—	5' CONTOURS
—	1' CONTOURS
—x—x—x—	CHAINLINK FENCE
—	AC ASPHALT CONCRETE
—	CONC CONCRETE
•	POST
○	TANK
1824.4	SPOT ELEVATION
○	TREE
△ 4	AERIAL TARGET
□	BUILDING
—+—	UTILITY POLE WITH LIGHT
+	UTILITY POLE

See Sheet 2 of 4



See Sheet 3 of 4



PHOTOGRAPHY DATED: 12-18-09
 SCALE: 1" = 50' CONTOUR
 INTERVAL: 1'
 GOLDEN STATE AERIAL SURVEYS, INC.
 3195 McMILLAN RD. SUITE E
 SAN LUIS OBISPO, CA 93401
 (805) 543-0339

Robert E. Littell

ROBERT E. LITTELL RCE 13395
 February 8, 2010

SAGE Consultants, Inc.
 LAT 34°-13'-00" N LONG 119°-02'-40" W ELEV 55.438m
 Surveyors • Application Developers • GIS Integrators •
 Engineers
 1978 Ventura Blvd., CAMARILLO CA 93010-7847
 Tel. (805) 482-6088 • Fax (805) 389-9815
 www.sagecon.com

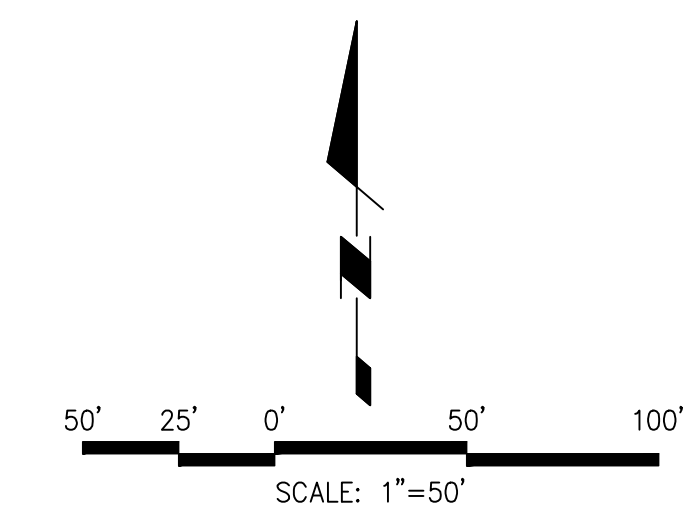
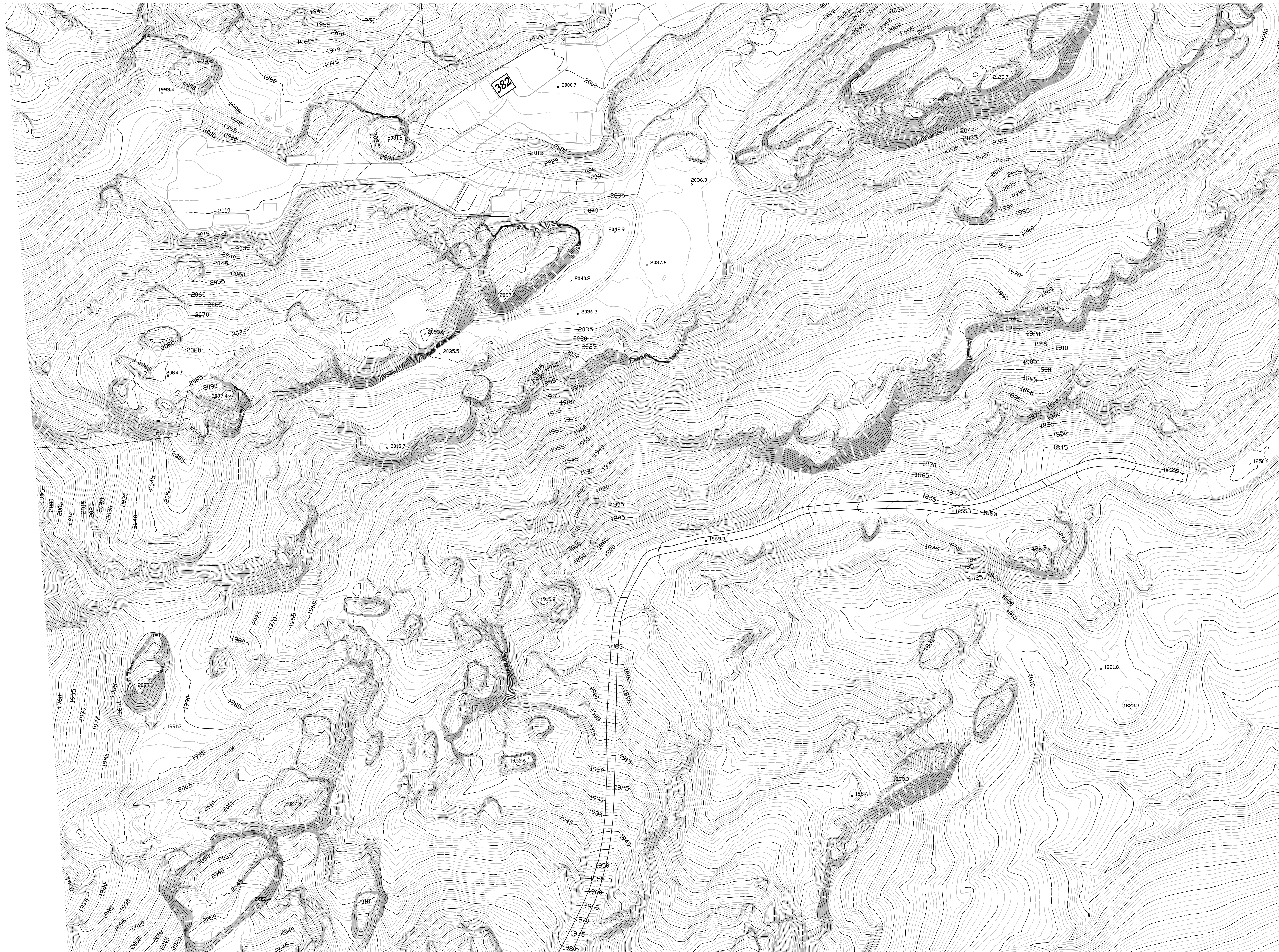
SCALE: 1"=50' JOB NUMBER: 294-V-1971
 DATE: 1-15-2010 DWG NAME: Boeing Flyover II

BOEING SSFL
 REFINED ISRA PEAS and ISRA Areas
 Post Excavation
 OUTFALL 008

5800 WOOLSEY CANYON ROAD
 CANOGA PARK, CA 91304-1148
 COUNTY OF VENTURA STATE OF CALIFORNIA

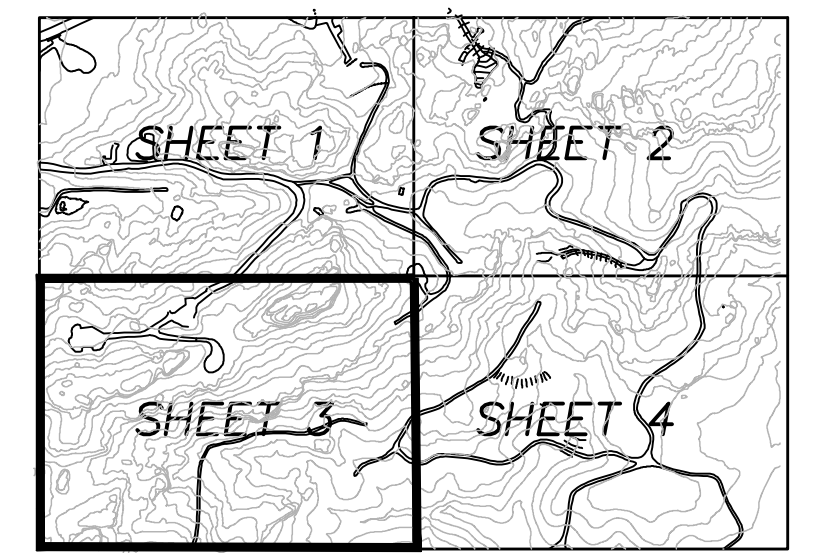
SHEET
 1
 OF 4

See Sheet 1 of 4



LEGEND

- 1765 — 5' CONTOURS
- 1' CONTOURS
- x - x - CHAINLINK FENCE
- AC ASPHALT CONCRETE
- CONC CONCRETE
- POST
- TANK
- 1824.4 SPOT ELEVATION
- TREE
- △ 4 AERIAL TARGET
- 1801.96 BUILDING
- ↑ UTILITY POLE WITH LIGHT
- UTILITY POLE



SHEET INDEX

See Sheet 4 of 4

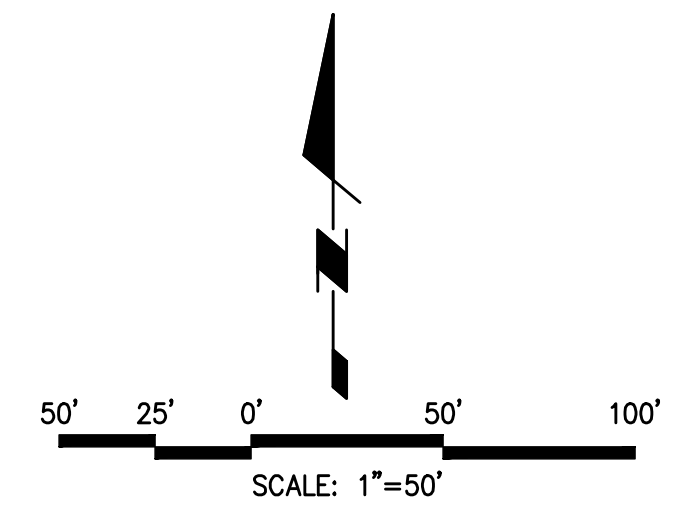
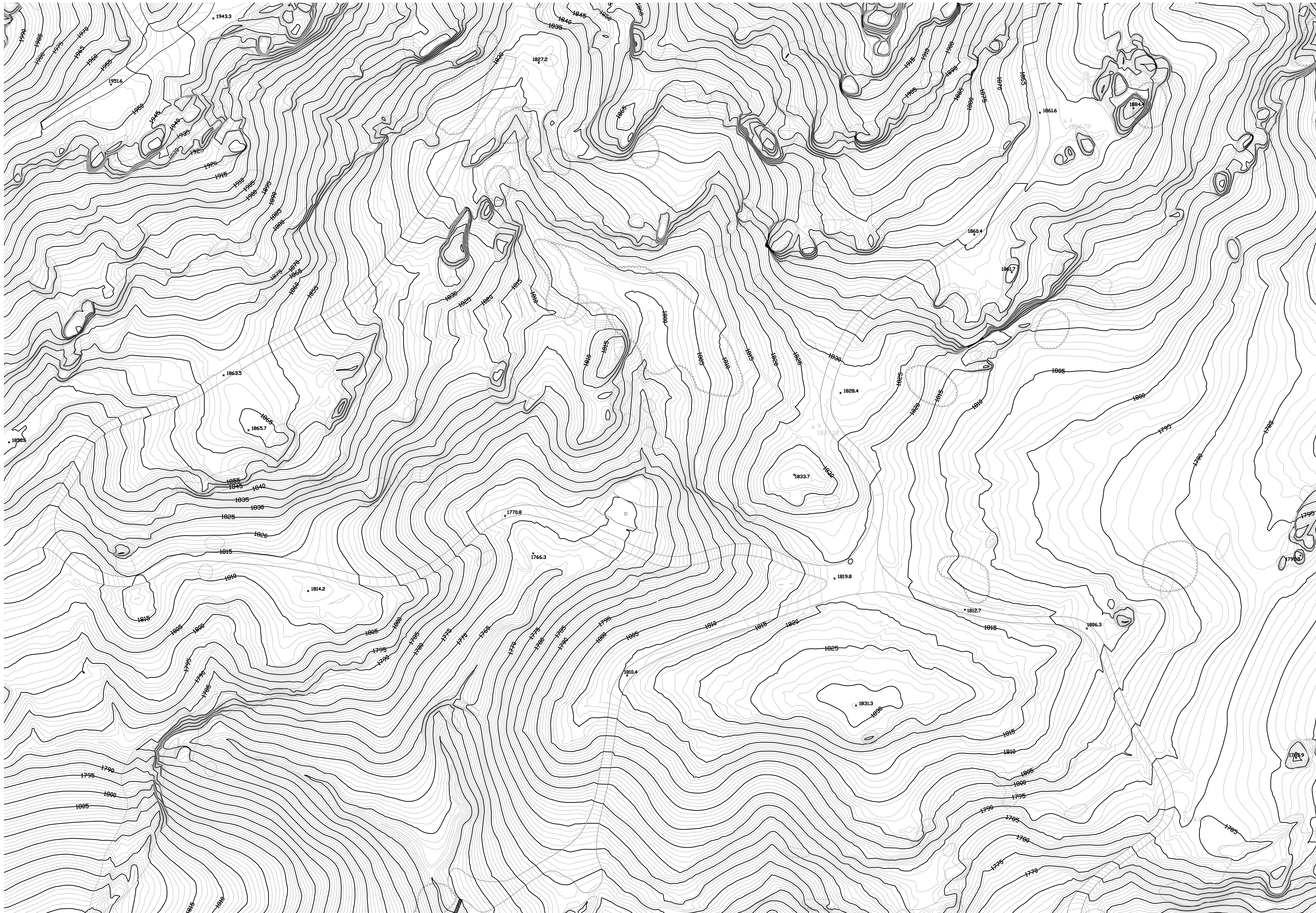


Robert E. Littell
ROBERT E. LITTELL RCE 13395
February 8, 2010

SAGE Consultants, Inc.
LAT 34°-13'-00" N LONG 119°-02'-40" W ELEV 55.438m

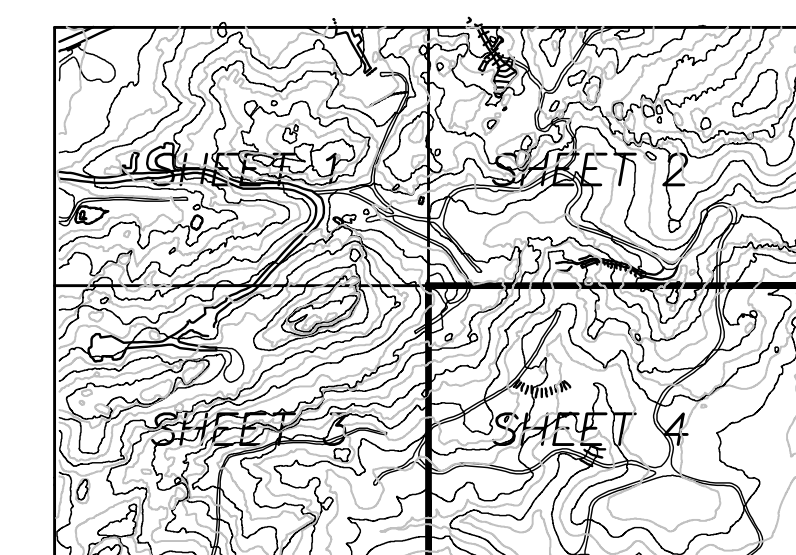
BOEING SSFL
REFINED ISRA PEAs and ISRA Areas
Post Excavation
OUTFALL 008

SHEET
3
OF 4



LEGEND

	5' CONTOURS
	1' CONTOURS
	CHAINLINK FENCE
	ASPHALT CONCRETE
	CONCRETE
	POST
	TANK
	SPOT ELEVATION
	TREE
	AERIAL TARGET
	BUILDING
	UTILITY POLE WITH LIGHT
	UTILITY POLE



SHEET INDEX



Robert E. Littell
 ROBERT E. LITTELL RCE 13395
 February 8, 2010

SAGE Consultants, Inc.
 LAT 34°-13'-00" N LONG 119°-02'-40" W ELEV 55.438m

BOEING SSFL
 REFINED ISRA PEAs and ISRA Areas
 Post Excavation
 OUTFALL 008

SHEET
 4
 OF 4