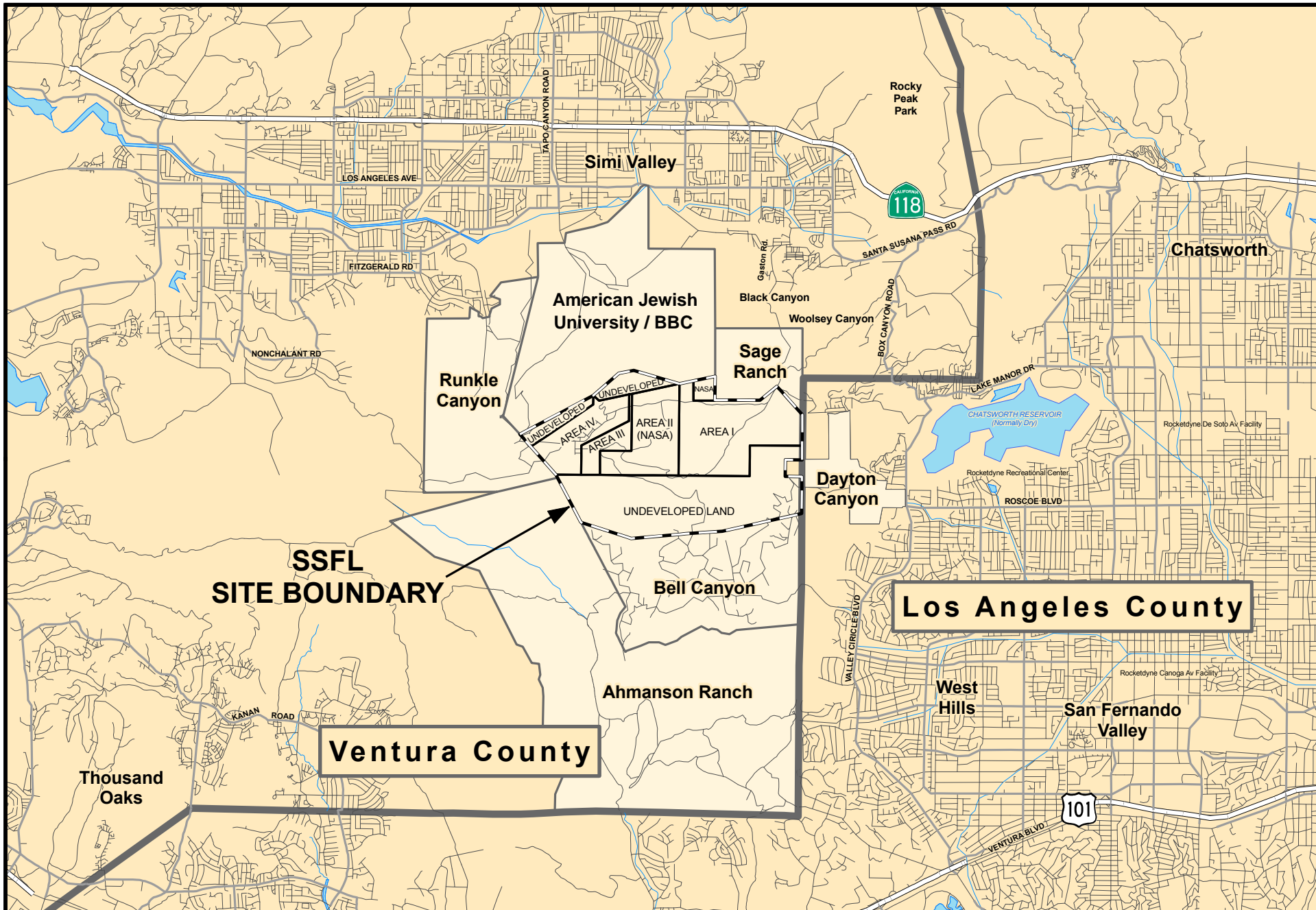
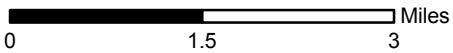


FIGURES



1 inch equals 1.5 miles



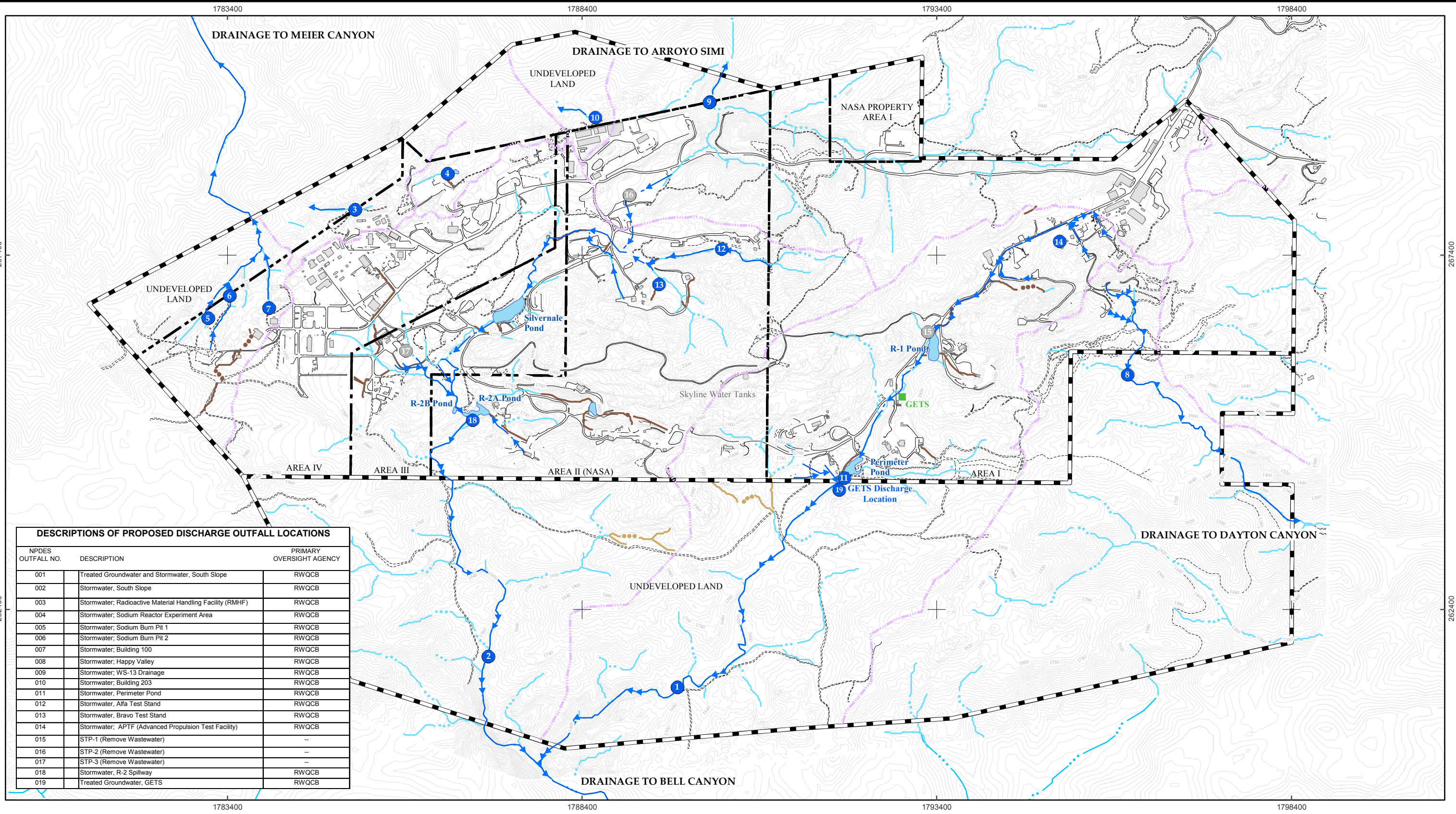
SANTA SUSANA FIELD LABORATORY

Document: Offsite-Report-Regional_Map.mxd

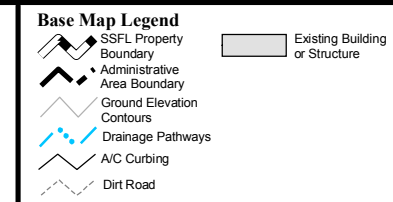
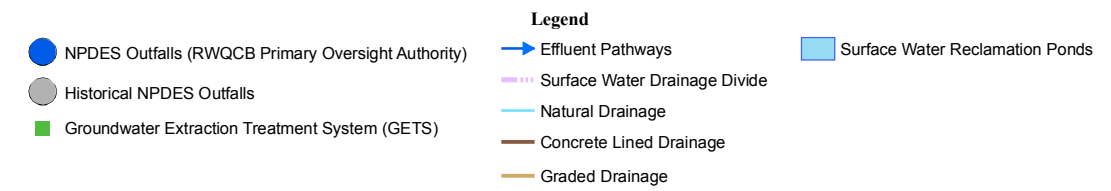
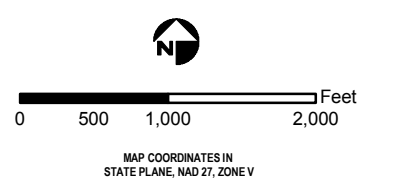
Date: Dec 10, 2007

Regional Map

FIGURE
1-1












DESCRIPTIONS OF PROPOSED DISCHARGE OUTFALL LOCATIONS		
NPDES OUTFALL NO.	DESCRIPTION	PRIMARY OVERSIGHT AGENCY
001	Treated Groundwater and Stormwater, South Slope	RWQCB
002	Stormwater, South Slope	RWQCB
003	Stormwater; Radioactive Material Handling Facility (RMHF)	RWQCB
004	Stormwater; Sodium Reactor Experiment Area	RWQCB
005	Stormwater; Sodium Burn Pit 1	RWQCB
006	Stormwater; Sodium Burn Pit 2	RWQCB
007	Stormwater; Building 100	RWQCB
008	Stormwater; Happy Valley	RWQCB
009	Stormwater; WS-13 Drainage	RWQCB
010	Stormwater; Building 203	RWQCB
011	Stormwater; Perimeter Pond	RWQCB
012	Stormwater; Alfa Test Stand	RWQCB
013	Stormwater; Bravo Test Stand	RWQCB
014	Stormwater; APTF (Advanced Propulsion Test Facility)	RWQCB
015	STP-1 (Remove Wastewater)	--
016	STP-2 (Remove Wastewater)	--
017	STP-3 (Remove Wastewater)	--
018	Stormwater, R-2 Spillway	RWQCB
019	Treated Groundwater, GETS	RWQCB

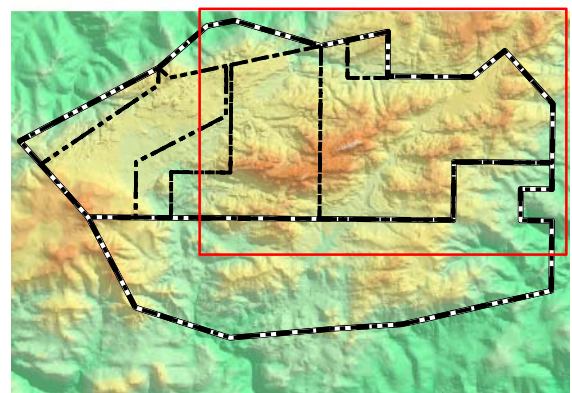
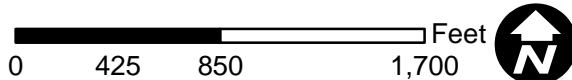
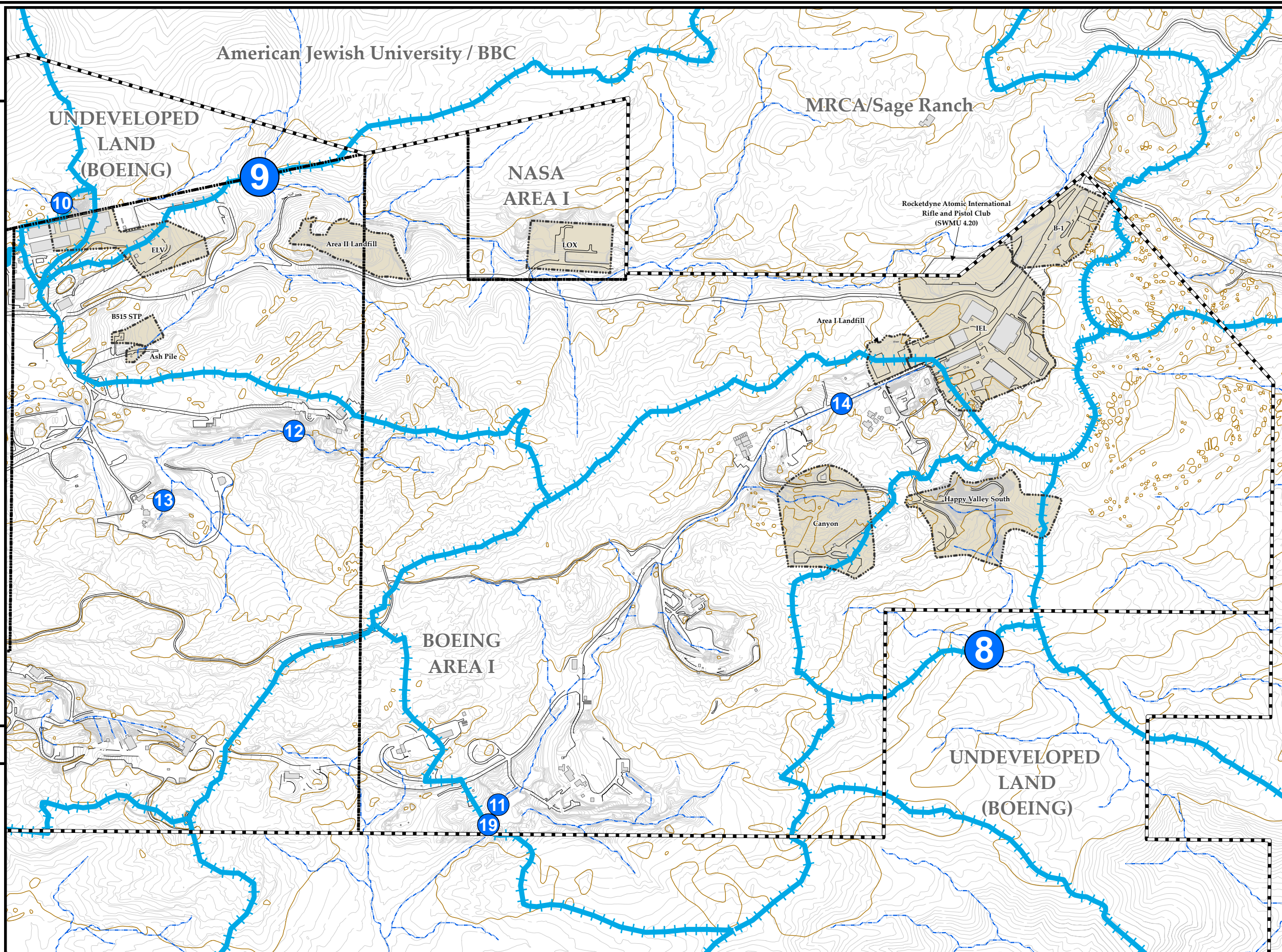


Site Map with Outfall Locations and Storm Water Drainage Systems

Outfalls 008 and 009 Location Map

Base Map Legend

-  Administrative Area Boundary
-  Historical Operations Areas (RFI Sites) Within Outfall 008 and 009
-  Surface Water Drainage
-  Surface Water Divide
-  NPDES Outfall
-  Existing Building or Structure
-  Paved Road
-  Elevation Contour
-  Bedrock Outcrop



S A N T A S U S A N A F I E L D L A B O R A T O R Y

