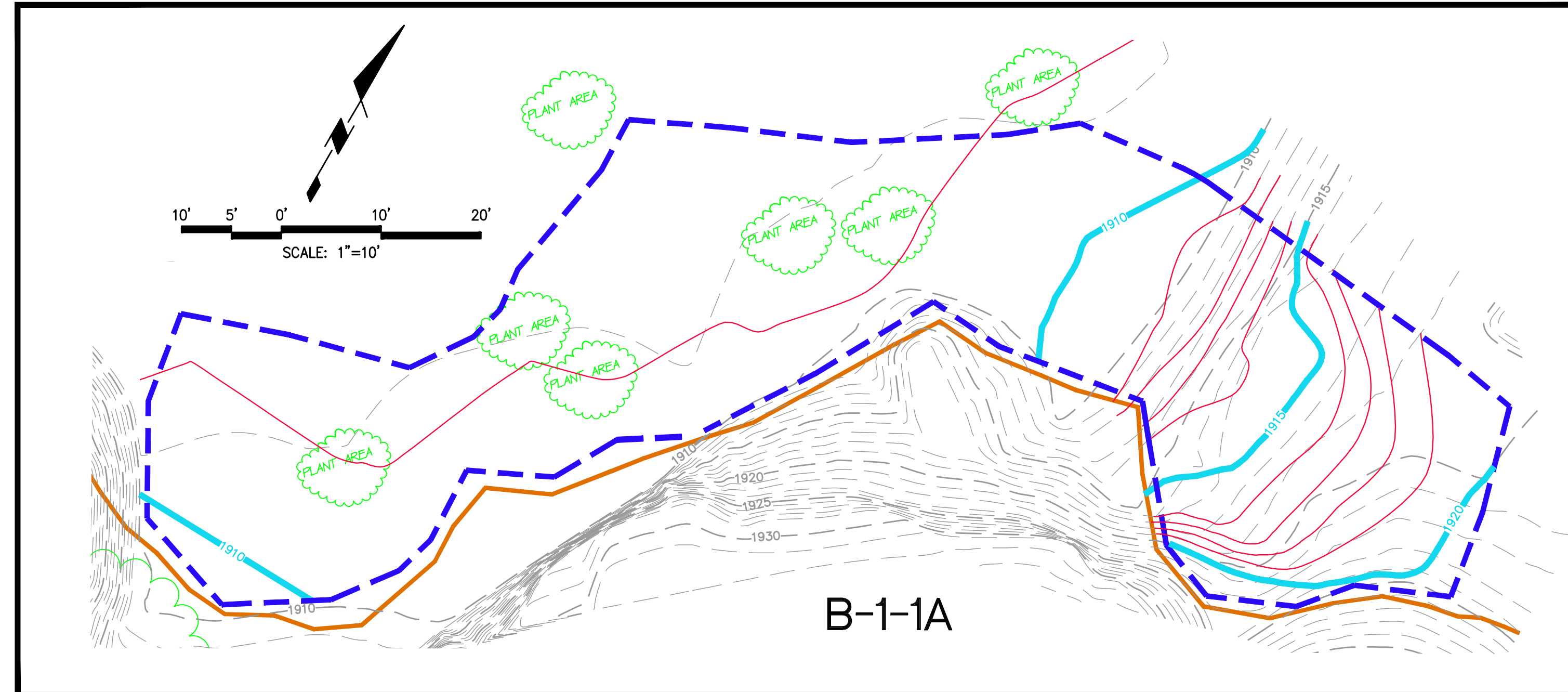


AP/STP-1A, -1D, -1F Post-Excavation Topographic Surveys

In Progress – To Be Provided as an Addendum When Complete



B1-1A SITE VOLUMES (Cubic Yards)

Site	Stratum	Surf1	Surf2	Unadjusted Cut	Fill	Net	Method
A	a-as	a-post	A-AS	3	32	29 (F)	Grid
				19	105	85 (F)	Composite
				20	108	89 (F)	End area

B1-1B SITE VOLUMES (Cubic Yards)

Site	Stratum	Surf1	Surf2	Unadjusted Cut	Fill	Net	Method
B	b-as	b-post	B-AS	70	35	35 (C)	Grid
				122	67	55 (C)	Composite
				133	73	59 (C)	End area

NOTES

BENCH MARK:
 FOUND BRASS DISK STAMPED "N 22688.45 E 12152.65 ELEV 1813.75 LS 2957" SET IN TOP WEST EDGE OF ROCK OUTCROPPING LOCATED IN VACANT FIELD NORTH OF ASPHALT DRIVE NORTH OF BUILDING 110.

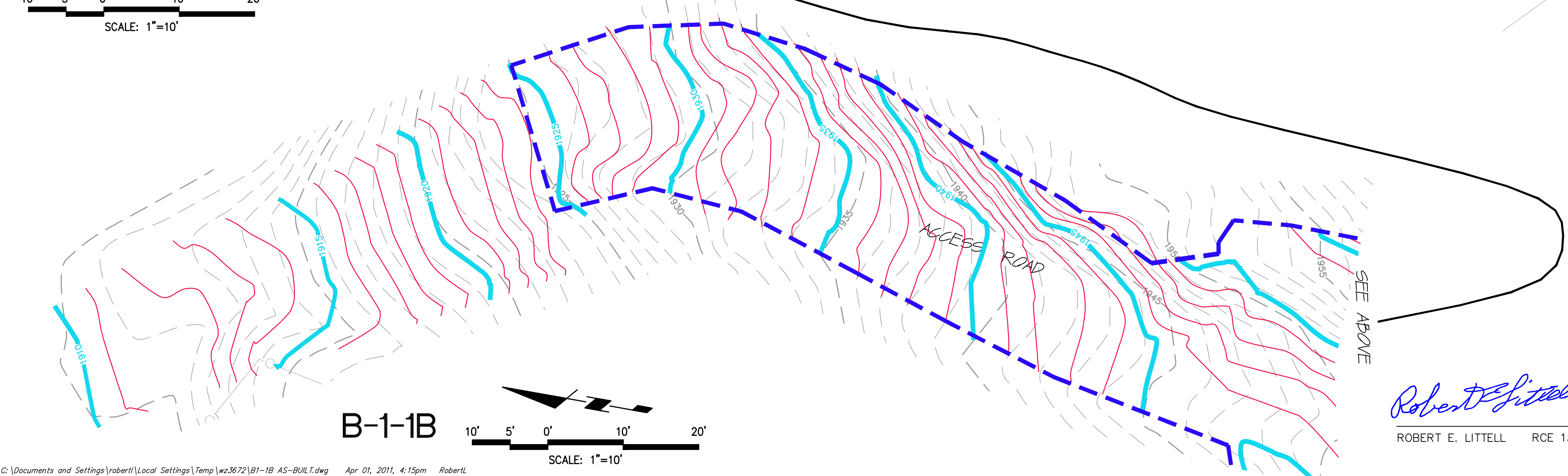
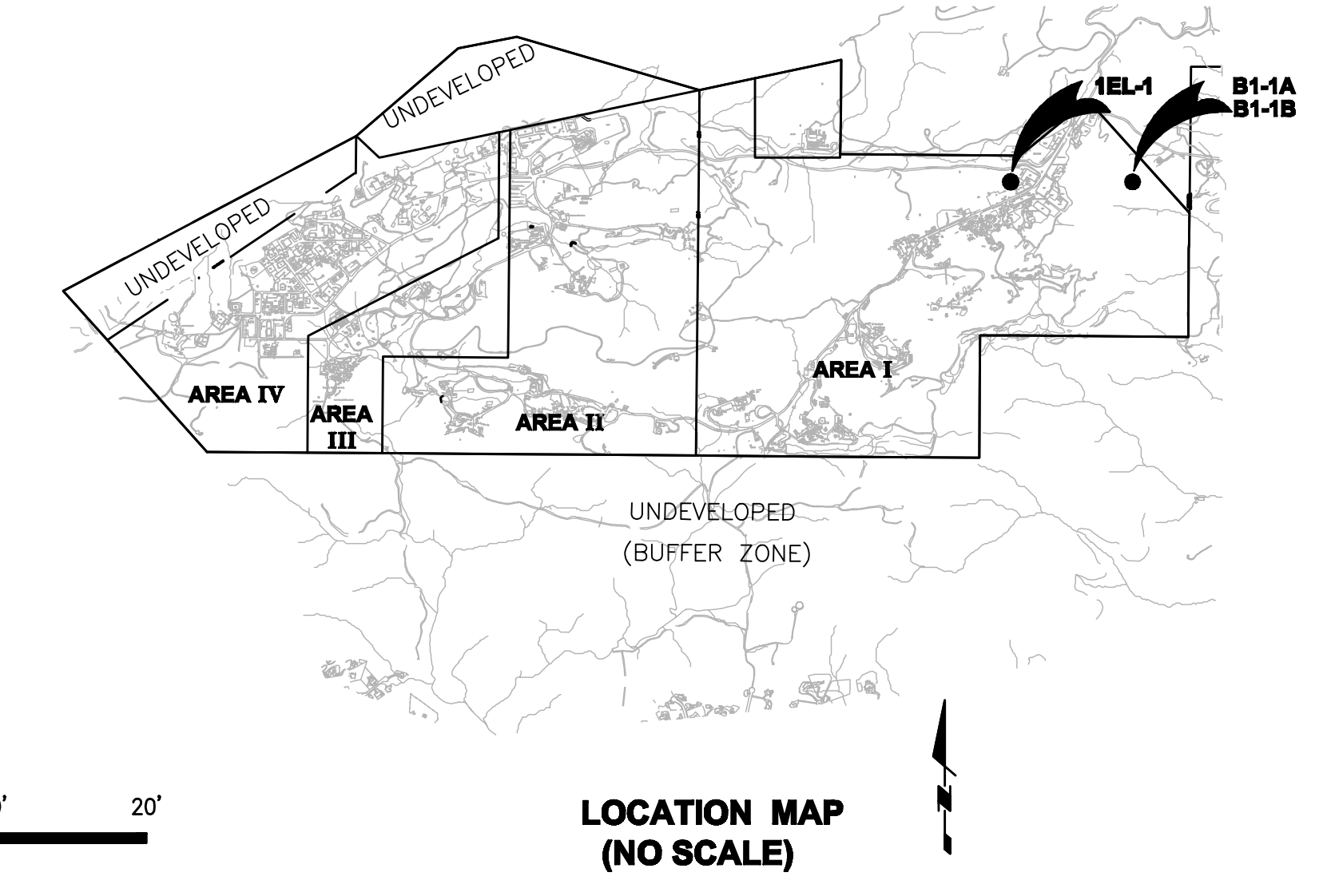
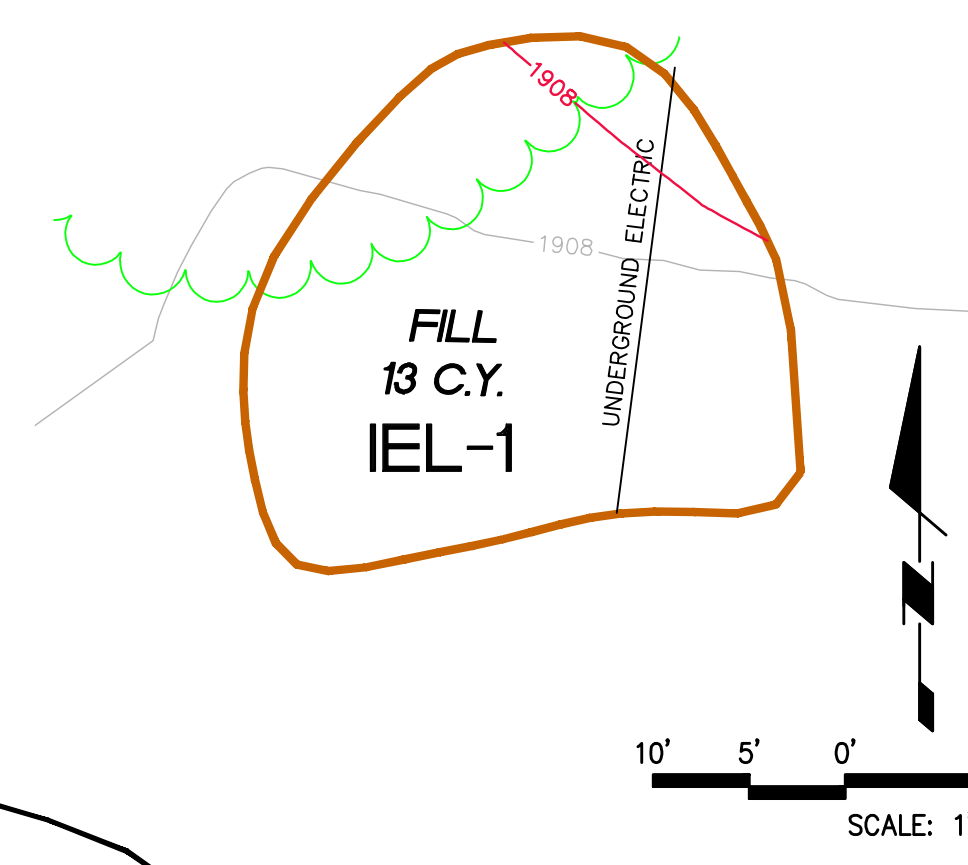
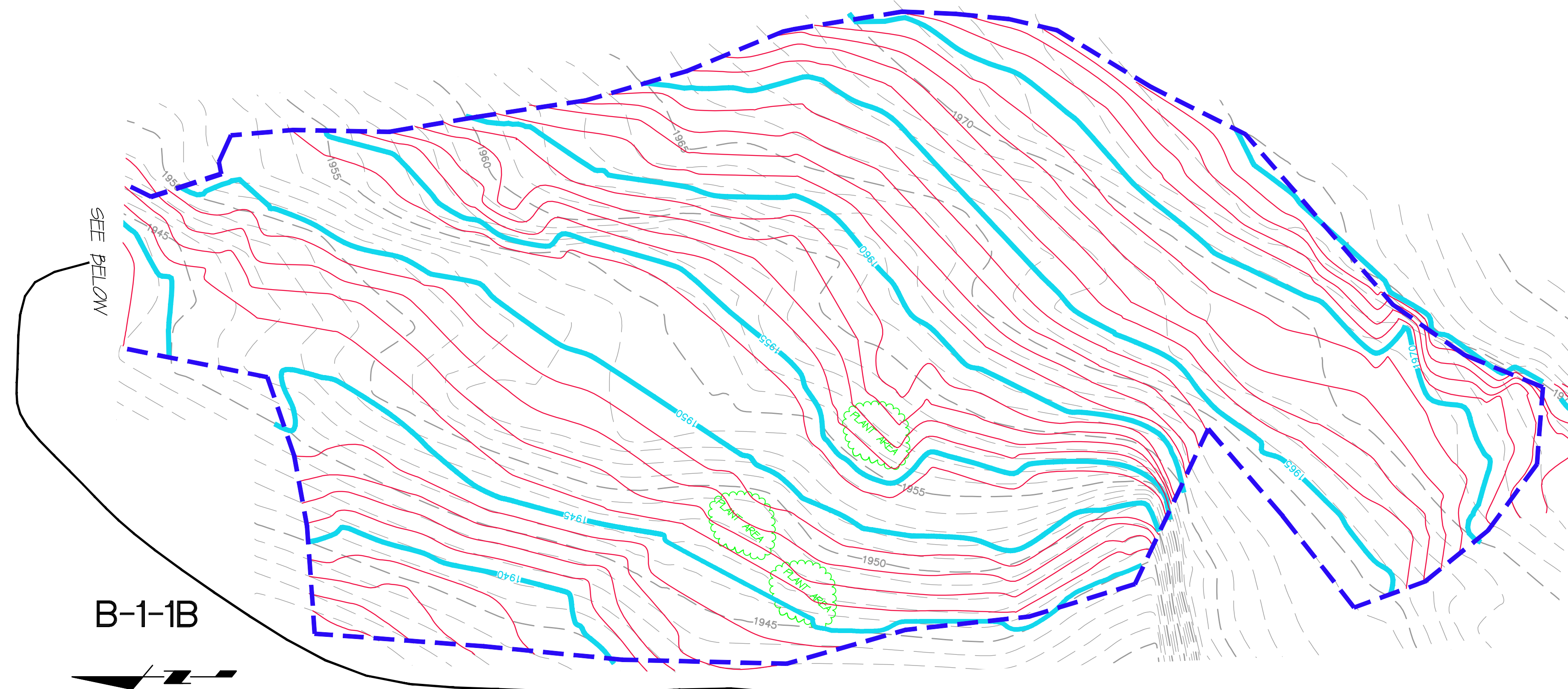
COORDINATES DERIVED FROM BOEING 1992 TOPOGRAPHIC MAP (NAD27 NAVD29 FEET):
 N 266917.4900
 E 1785312.1200
 ELEV 1811.13

PURPOSE: THE PURPOSE OF THIS DRAWING IS TO SHOW THE SOIL REMEDIATION AS OF OCTOBER 2010.

NOTES: 1: AS BUILT SURFACE SURVEYED DECEMBER 1, 2010.
 2: VOLUMES CALCULATED USING AUTODESK LAND DESKTOP SOFTWARE.

LEGEND

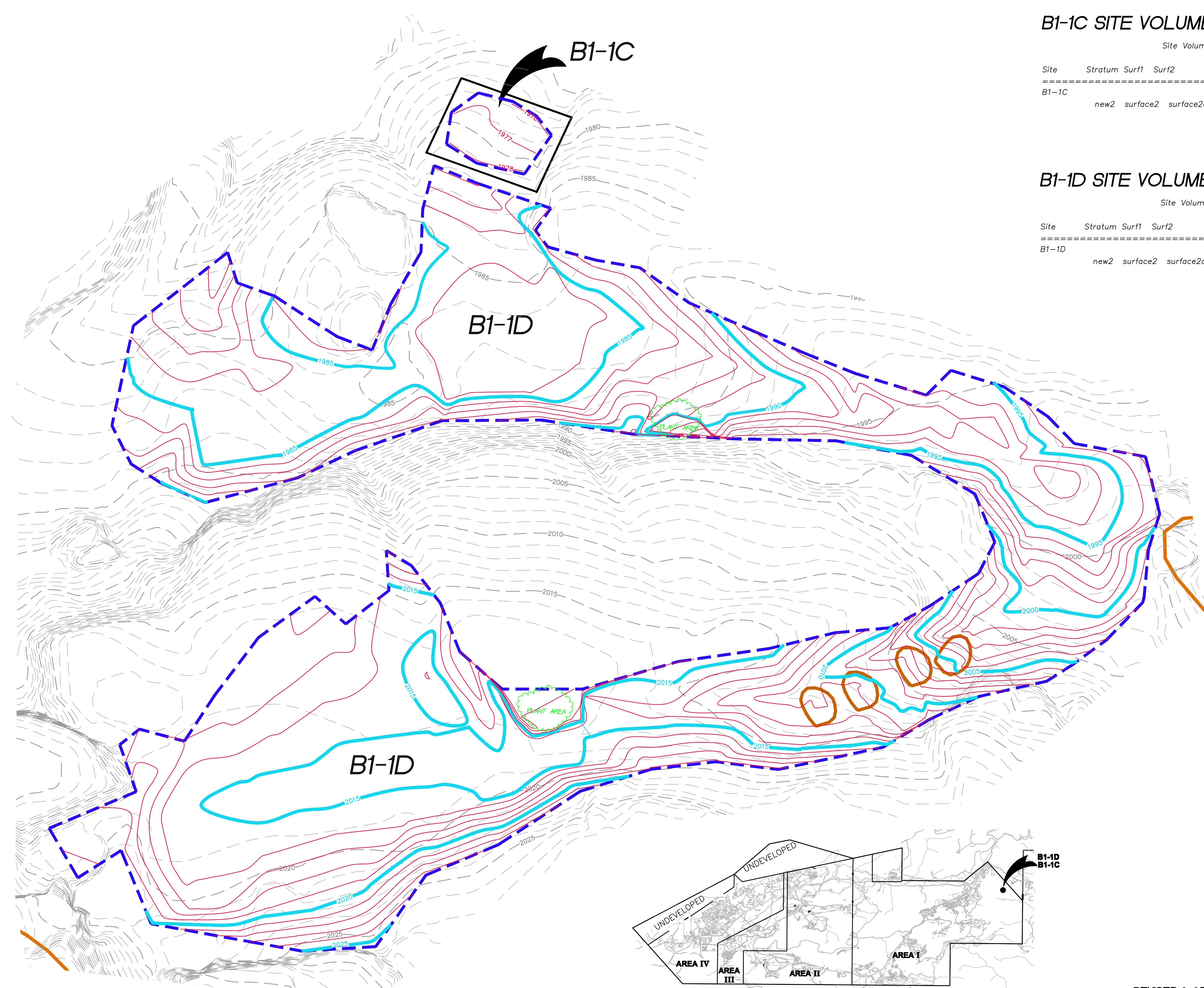
- 5' CONTOURS (DECEMBER 2010)
- 1' CONTOURS (DECEMBER 2010)
- ROCK FORMATION
- 5' CONTOURS (JUNE 2010)
- 1' CONTOURS (JUNE 2010)
- EXCAVATION LIMITS



Robert E. Littell
 ROBERT E. LITTELL RCE 13395

REVISED: 02-23-2011 (MODIFIED CONTOURS)

 SAGE Consultants, Inc. LAT 34°13'00" N LONG 119°02'40" W ELEV 55.438m Surveyors • Application Engineers • Civil Engineers • Planners 1975 Ventura Blvd., CALAMAR, CA 93010-7047 Tel. (805) 462-6088 • Fax (805) 389-9815 www.sagecon.com	BOEING SSFL B1-1A, -1B, -1C, -1D IEL-1 AS-BUILT EXHIBIT	SHEET 1 OF 2
	5800 WOOLSEY CANYON ROAD CANOGA PARK, CA 91304-1148 COUNTY OF VENTURA STATE OF CALIFORNIA	



B1-1C SITE VOLUMES (Cubic Yards)

Site Volume Table: Unadjusted

Site	Stratum	Surf1	Surf2	Cut	Fill	Net	Method
B1-1C	new2	surface2	surface2a	22	0	22 (C)	Grid
				22	0	22 (C)	Composite
				22	0	22 (C)	End area

B1-1D SITE VOLUMES (Cubic Yards)

Site Volume Table: Unadjusted

Site	Stratum	Surf1	Surf2	Cut	Fill	Net	Method
B1-1D	new2	surface2	surface2a	827	2	825 (C)	Grid
				850	16	833 (C)	Composite
				938	45	893 (C)	End area

NOTES

BENCH MARK:
 FOUND BRASS DISK STAMPED "N 22688.45 E 12152.65 ELEV 1813.75 LS 2957" SET IN TOP WEST EDGE OF ROCK OUTCROPPING LOCATED IN VACANT FIELD NORTH OF ASPHALT DRIVE NORTH OF BUILDING 110.

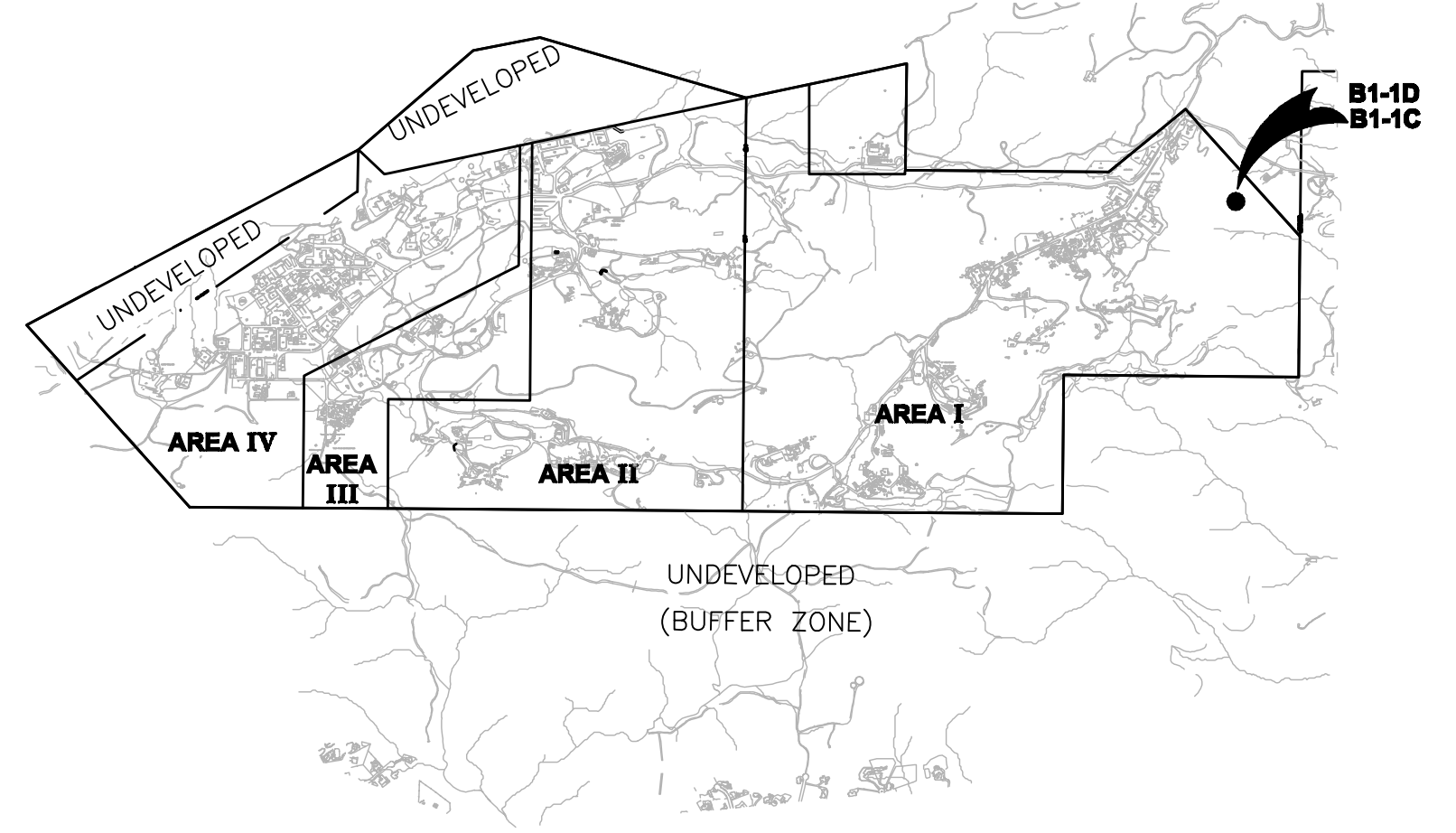
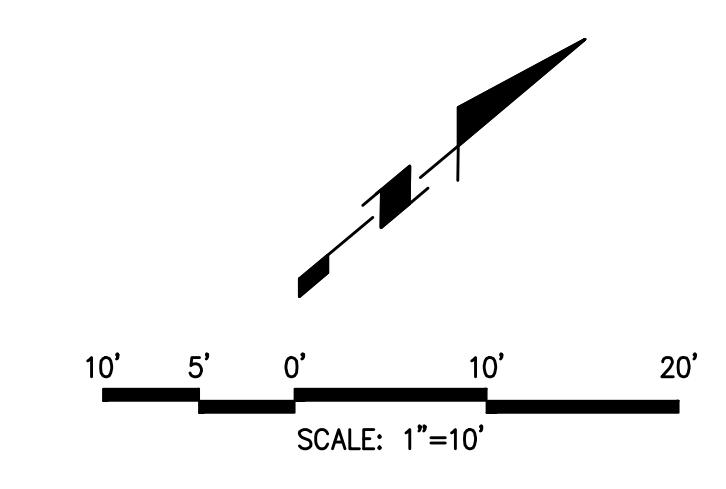
COORDINATES DERIVED FROM BOEING 1992 TOPOGRAPHIC MAP (NAD27 NAVD29 FEET):
 N 266917.4900
 E 1785312.1200
 ELEV 1811.13

PURPOSE: THE PURPOSE OF THIS DRAWING IS TO CALCULATE THE VOLUME OF ISRA SOIL REMOVED AS OF OCTOBER 2010.

- NOTES: 1: POST EXCAVATION SURFACE SURVEYED OCTOBER 25, 2010.
 2: VOLUMES CALCULATED USING AUTODESK LAND DESKTOP SOFTWARE.

LEGEND

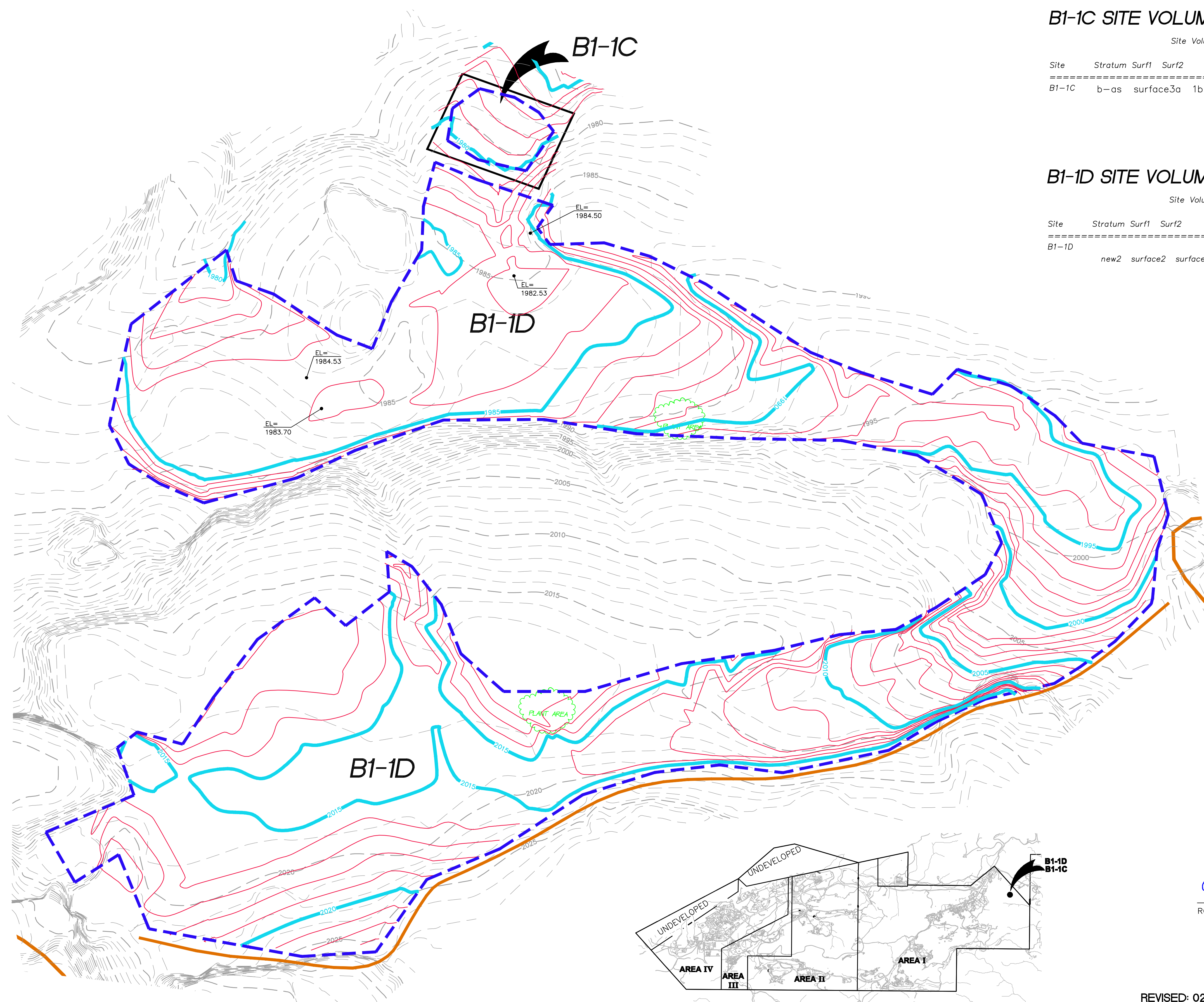
- 5' CONTOURS (OCTOBER 2010)
- 1' CONTOURS (OCTOBER 2010)
- ROCK FORMATION
- 5' CONTOURS (JUNE 2010)
- 1' CONTOURS (JUNE 2010)
- - - EXCAVATION LIMITS



LOCATION MAP (NO SCALE)

REVISED 2-25-2011 (MODIFIED CONTOURS)

<p>SAGE Consultants, Inc. LAT 34°13'00" N LONG 119°02'40" W ELEV 35.438m Surveying • Application Development • Construction • Engineering 1978 Ventura Blvd., CALAMAR, CA 92010-7047 Tel: (805) 462-6088 • Fax: (805) 389-9815 www.sagecon.com</p>	<p>BOEING SSFL B1-1A, -1B, -1C, -1D & IEL-1 POST EXCAVATION EXHIBIT</p>	<p>SHEET 2 OF 2</p>
	<p>SCALE: 1"=10' DATE: 10-27-2010</p>	



B1-1C SITE VOLUMES (Cubic Yards)

Site Volume Table: Unadjusted

Site	Stratum	Surf1	Surf2	Cut	Fill	Net	Method
B1-1C	b-as	surface3a	1b-d-as-built	0	5	5 (F)	Grid
				0	5	5 (F)	Composite
				0	5	5 (F)	End area

B1-1D SITE VOLUMES (Cubic Yards)

Site Volume Table: Unadjusted

Site	Stratum	Surf1	Surf2	Cut	Fill	Net	Method
B1-1D	new2	surface2	surface2a	111	15	96 (C)	Grid
				122	7	115 (C)	Composite
				130	21	109 (C)	End area

NOTES

BENCH MARK:
 FOUND BRASS DISK STAMPED "N 22688.45 E 12152.65 ELEV 1813.75 LS 2957" SET IN TOP WEST EDGE OF ROCK OUTCROPPING LOCATED IN VACANT FIELD NORTH OF ASPHALT DRIVE NORTH OF BUILDING 110.

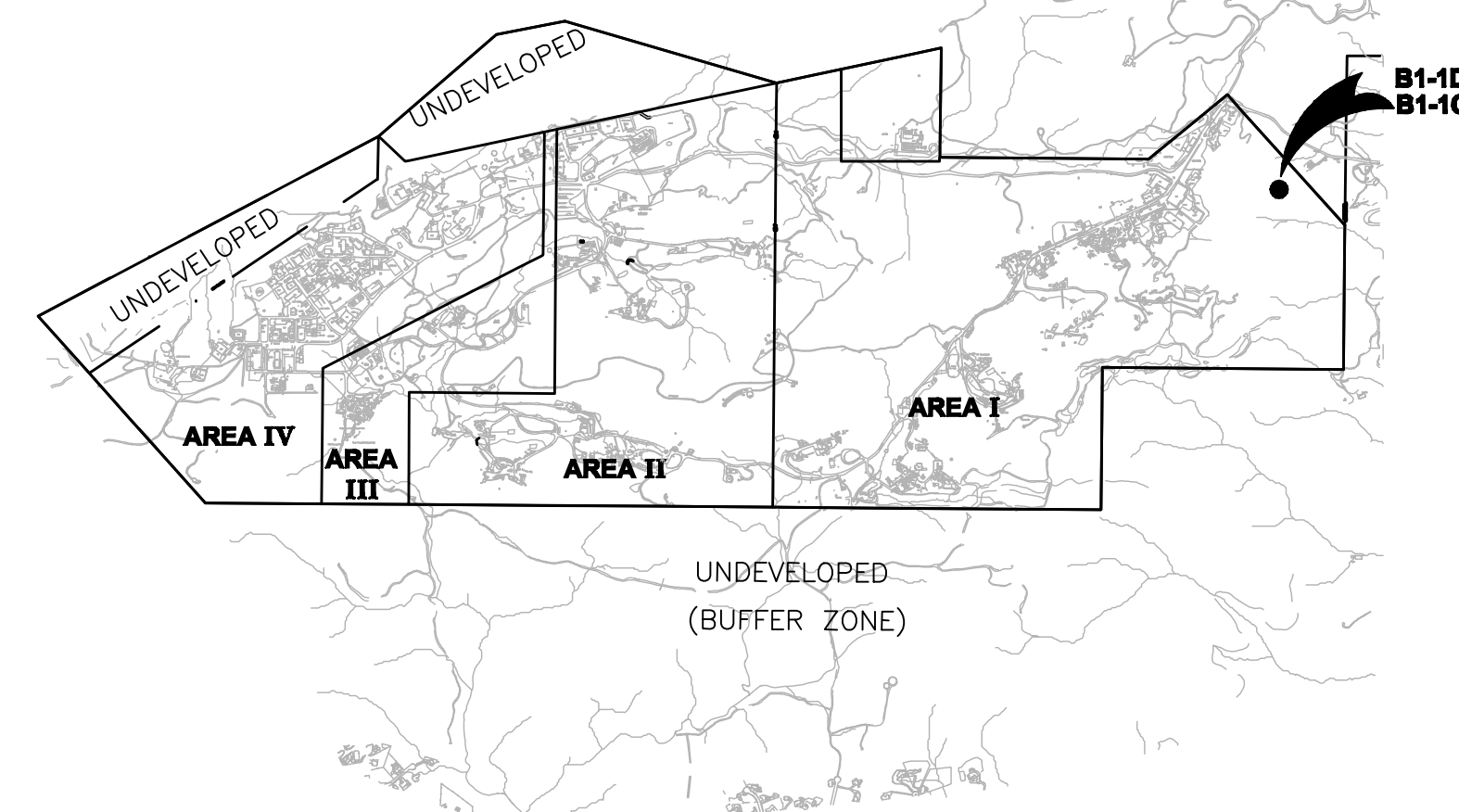
COORDINATES DERIVED FROM BOEING 1992 TOPOGRAPHIC MAP (NAD27 NAVD29 FEET):
 N 266917.4900
 E 1785312.1200
 ELEV 1811.13

PURPOSE: THE PURPOSE OF THIS DRAWING IS TO CALCULATE THE VOLUME OF ISRA SOIL REMOVED PER AS OF OCTOBER 2010.

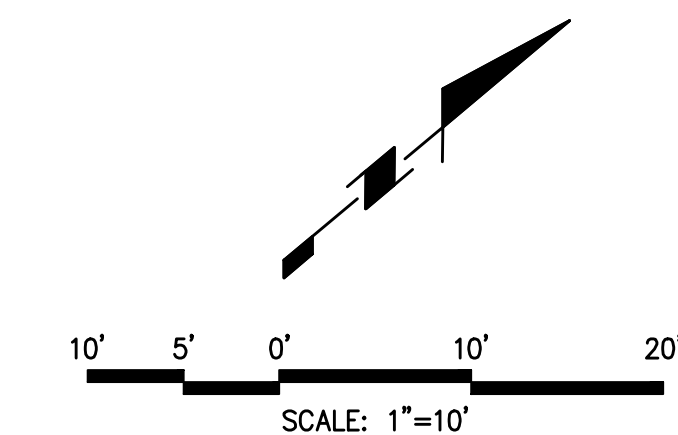
- NOTES: 1. AS BUILT SURFACE SURVEYED OCTOBER 25, 2010.
 2. VOLUMES CALCULATED USING AUTODESK LAND DESKTOP SOFTWARE.

LEGEND

- 5' CONTOURS (DECEMBER 2010)
- 1' CONTOURS (DECEMBER 2010)
- ROCK FORMATION
- 5' CONTOURS (JUNE 2010)
- 1' CONTOURS (JUNE 2010)
- - - EXCAVATION LIMITS



Robert E. Littell
 ROBERT E. LITTELL RCE 13395



REVISED: 02-23-2011 (MODIFIED CONTOURS)

<p>SAGE consultants, Inc. LAT 34°-13'-00" N LONG 119°-02'-49" W ELEV 55.438m Surveyors • Application Engineers • Civil Engineers • Engineers 1975 Ventura Blvd., CALAMAR, CA 92010-7047 Tel. (805) 462-6088 • Fax (805) 389-9815 www.sagecon.com</p>	<p>BOEING SSFL B1-1A, -1B, -1C, -1D & IEL-1 AS-BUILT EXHIBIT</p>	<p>SHEET 2 OF 2</p>
	<p>SCALE: 1"=10' DATE: 12-9-2010</p>	