

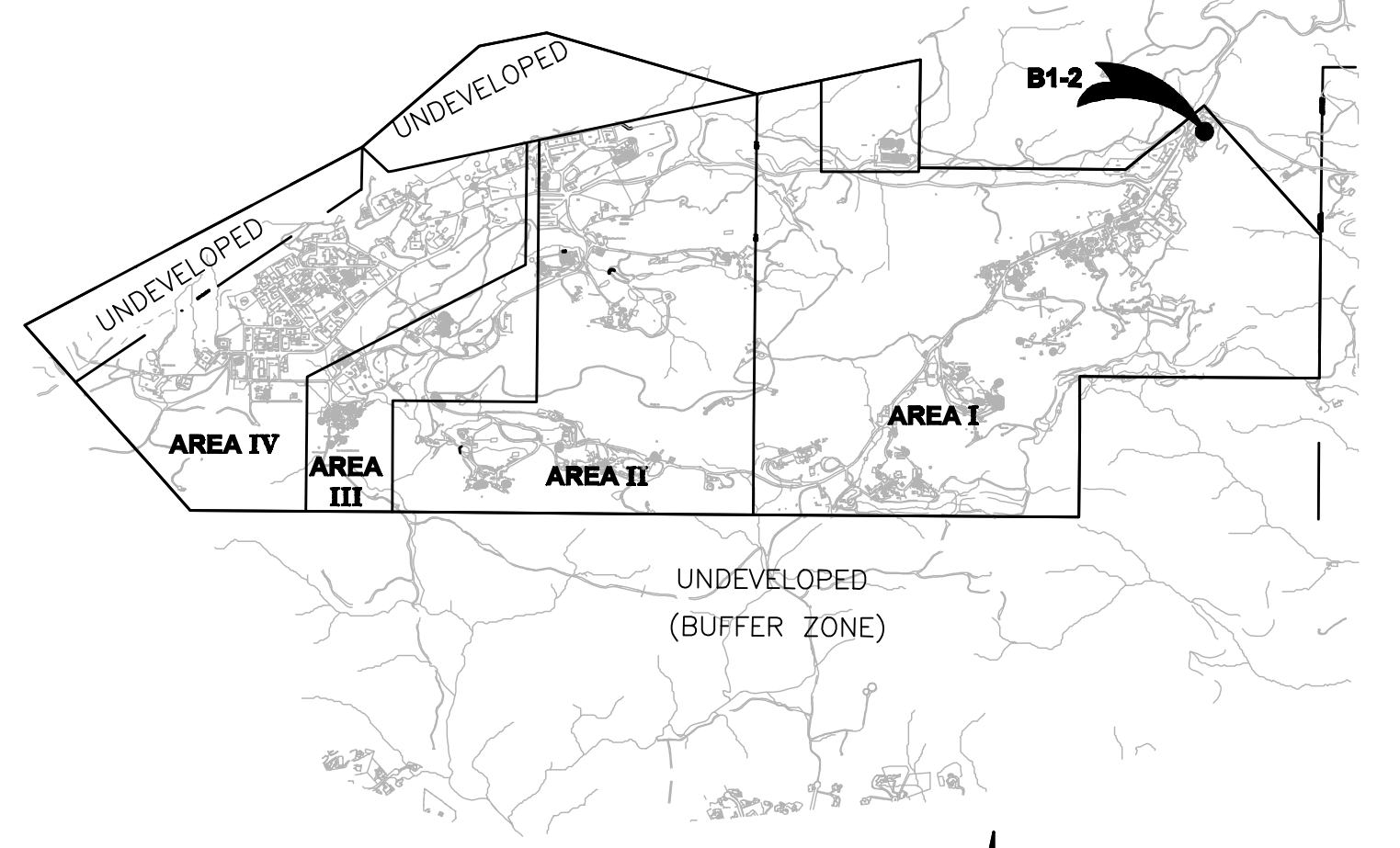
SITE VOLUMES (Cubic Yards)*

Site	Stratum	Surf1	Surf2	Unadjusted Cut	Fill	Net	Method
B2	B2	orig	new	2318	82	2236	(C) Grid
				2552	126	2426	(C) Composite
				2571	124	2447	(C) End area

*REVISED 04-28-2011

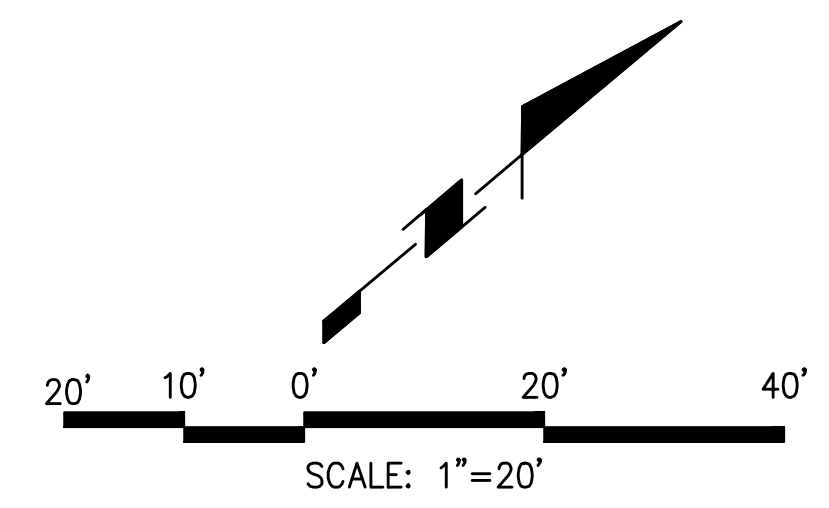
LEGEND

- 5' CONTOURS (DECEMBER 2010)
- 1' CONTOURS (DECEMBER 2010)
- ROCK FORMATION
- EXCAVATION LIMITS
- TREE LINE
- AC CURB
- CHAIN LINK FENCE
- 10" WATER LINE
- MONITORING WELL
- PIEZOMETER WELL
- SPOT ELEVATION
- FLOWLINE ELEVATION



SAGE CONSULTANTS INC. BOEING SSFL ISRA B1-2, AREA I WELLS SHEET 1 of 1
 JO: 494-V-1989 5800 WOOLSEY CANYON ROAD, CANOGA PARK, CA Date: 12/09/2010

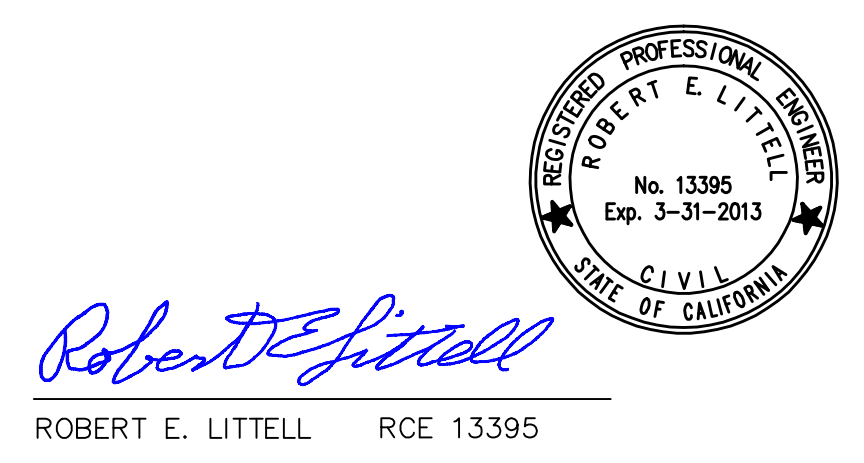
Point ID	North Latitude**	West Longitude**	NAVD 88***	Northing**	Easting**	Surface Casing***	Well Head****	Ground****
5	34-13-52.96029	118-42-40.25009	1813.81	266917.4900	1785312.1200		BM	1811.13
RS-32	34-14-16.24314	118-40-22.14082	1912.29	269191.3460	1796923.5331	1910.02	1909.65	1908.54
RD-53	34-14-16.35484	118-40-22.41200	1911.46	269202.7891	1796900.8423	1909.82	1908.82	1908.82
RS-31	34-14-16.28280	118-40-22.71269	1912.29	269205.8851	1796875.6183	1909.92	1909.65	1908.51
RS-30	34-14-16.59015	118-40-23.06922	1912.18	269226.9444	1796845.8256	1909.75	1909.54	1907.31
?	34-14-16.74106	118-40-22.67348	1909.15	269241.9771	1796879.1521	1907.24	1906.51	1907.23
PZ-118	34-14-18.20730	118-40-21.37878	1910.51	269389.4660	1796988.8398	1908.19	1907.87	1905.62
RD-84	34-14-18.14251	118-40-21.59361	1910.47	269393.1458	1796970.8277	1908.41	1907.83	1905.37



NOTES

- BENCH MARK:
 FOUND BRASS DISK STAMPED "N 22688.45 E 12152.65 ELEV 1813.75 LS 2957" SET IN TOP WEST EDGE OF ROCK OUTCROPPING LOCATED IN VACANT FIELD NORTH OF ASPHALT DRIVE NORTH OF BUILDING 110.
- COORDINATES DERIVED FROM BOEING 1992 TOPOGRAPHIC MAP (NAD27 NAVD29 FEET):
 N 266917.4900
 E 1785312.1200
 ELEV 1811.13
- PURPOSE: THE PURPOSE OF THIS DRAWING IS TO CALCULATE THE VOLUME OF ISRA SOIL REMOVED AS OF JANUARY 2011.
- NOTES: 1: POST EXCAVATION SURFACE SURVEYED JANUARY 11, 2011.
 2: VOLUMES CALCULATED USING AUTODESK LAND DESKTOP SOFTWARE.
 3: MONITORING WELL DATA RE-SURVEYED DECEMBER 10, 2010.

REVISED: 04-28-2011 (REMOVED CONTOURS IN TREE COVER UNDER B1-2 AREA, UPDATED BOUNDARY AND VOLUME CALCULATIONS)



Robert E. Littell
 ROBERT E. LITTELL RCE 13395

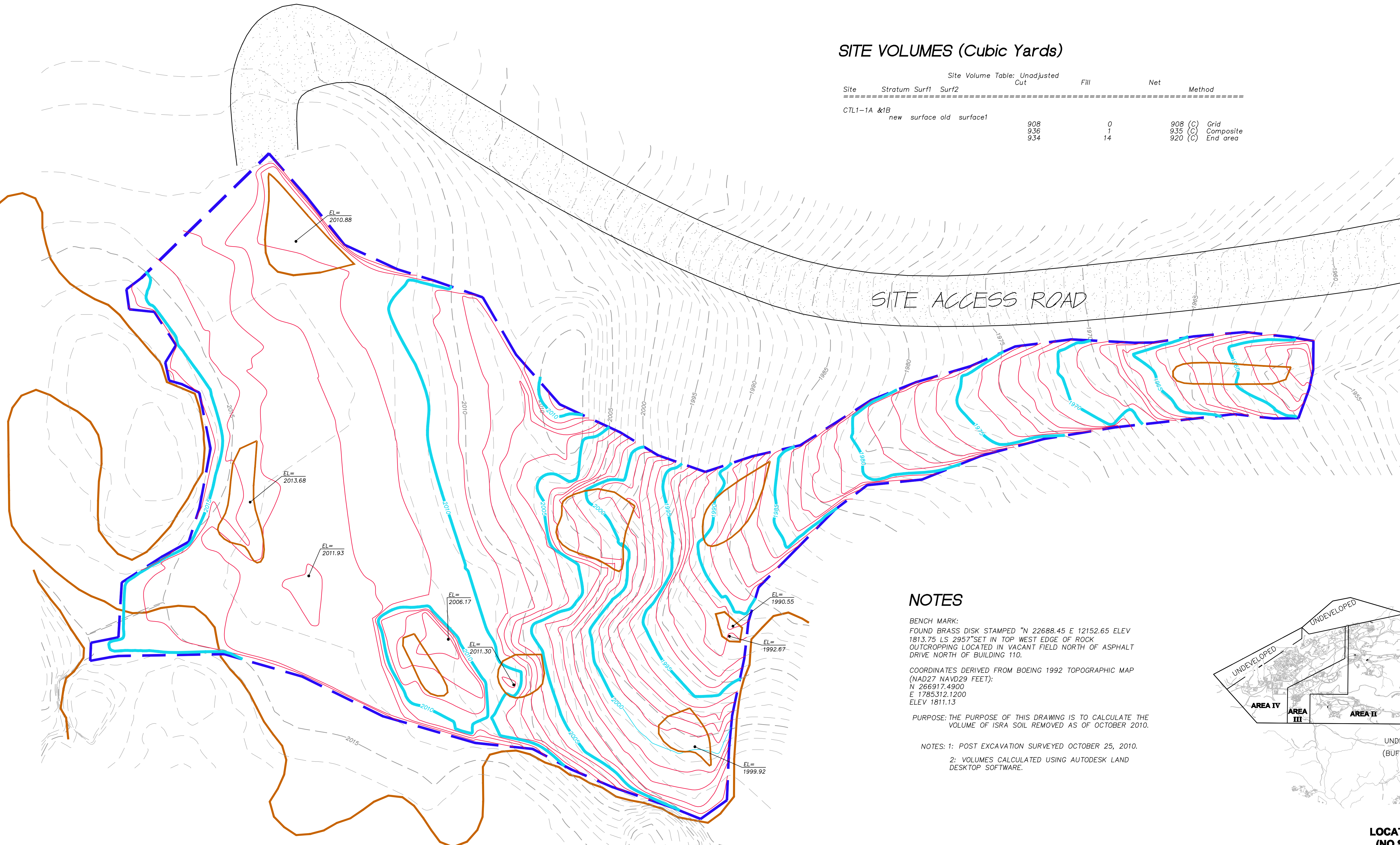
 LAT 34°13'00" N LONG 118°02'40" W ELEV 55.438m Surveyors • Application Developers • GIS Integration • Engineers 1978 Ventura Blvd., CAMARILLO CA 93010-7847 Tel. (805) 482-6088 • Fax (805) 389-9815 www.sagecon.com	BOEING SSFL ISRA AREA B1-2 POST EXCAVATION EXHIBIT WAS 4506	SHEET 1 OF 1
	SCALE: 1"=20' DATE: 1-23-2011	JOB NUMBER: 494-V-1989 DWG NAME: AREA-B1-2_POSTEX

B1-2 Post-Restoration Topographic Survey

In Progress – To Be Provided as an Addendum When Complete

SITE VOLUMES (Cubic Yards)

Site	Stratum		Surf		Cut	Fill	Net	Method
	new	surface	old	surface1				
CTL1-1A & 1B					908	0	908 (C)	Grid
					936	1	935 (C)	Composite
					934	14	920 (C)	End area



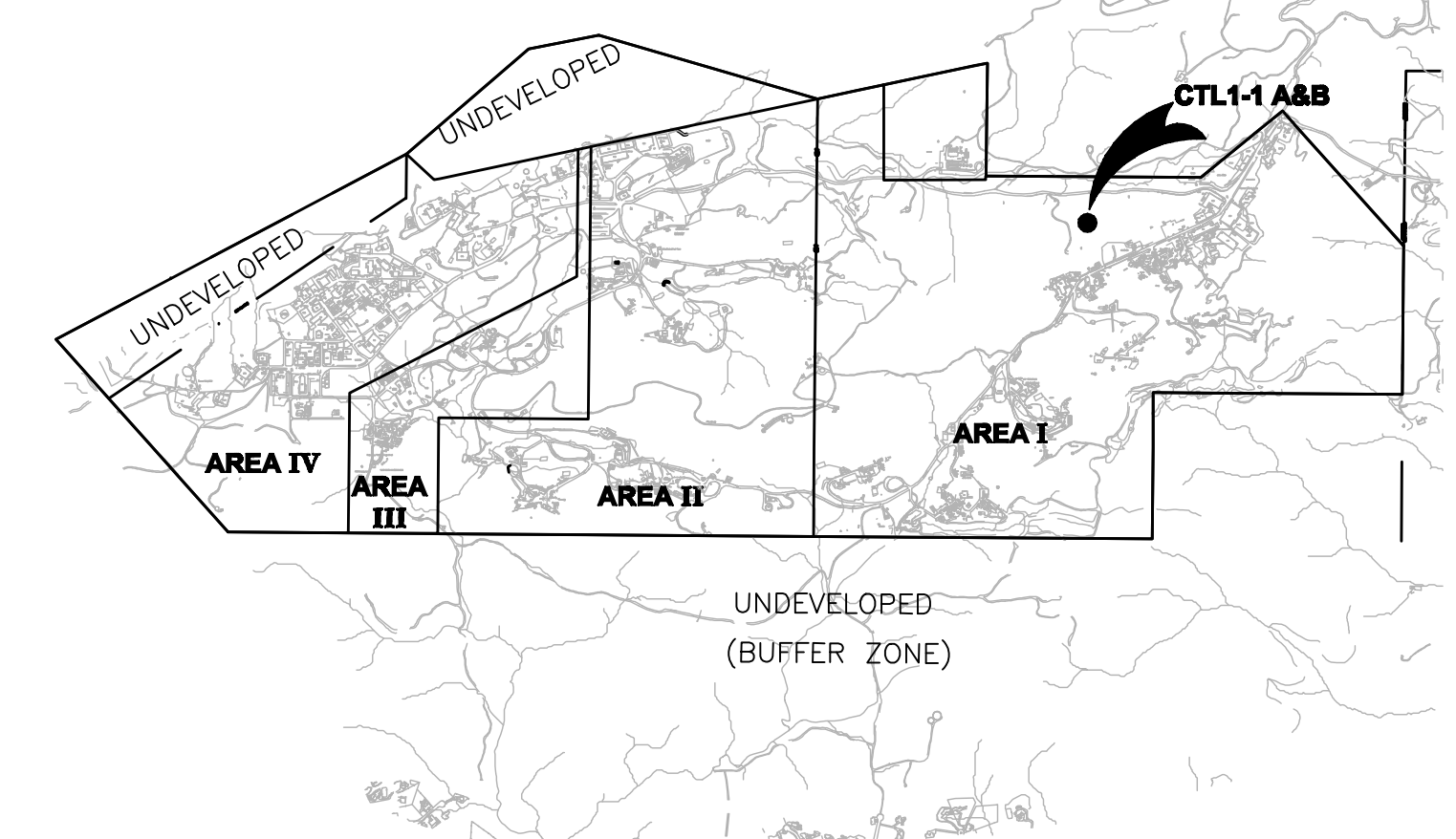
NOTES

BENCH MARK:
 FOUND BRASS DISK STAMPED "N 22688.45 E 12152.65 ELEV 1813.75 LS 2957" SET IN TOP WEST EDGE OF ROCK OUTCROPPING LOCATED IN VACANT FIELD NORTH OF ASPHALT DRIVE NORTH OF BUILDING 110.

COORDINATES DERIVED FROM BOEING 1992 TOPOGRAPHIC MAP (NAD27 NAVD29 FEET):
 N 266917.4900
 E 1785312.1200
 ELEV 1811.13

PURPOSE: THE PURPOSE OF THIS DRAWING IS TO CALCULATE THE VOLUME OF ISRA SOIL REMOVED AS OF OCTOBER 2010.

NOTES: 1: POST EXCAVATION SURVEYED OCTOBER 25, 2010.
 2: VOLUMES CALCULATED USING AUTODESK LAND DESKTOP SOFTWARE.



LEGEND

- 1920 5' CONTOURS (OCTOBER 2010)
- 1' CONTOURS (OCTOBER 2010)
- ROCK FORMATION
- 1500 5' CONTOURS (JUNE 2010)
- 1' CONTOURS (JUNE 2010)
- EXCAVATION LIMITS
- DIRT ROAD

REVISED: 02-24-2011 (MODIFIED CONTOURS)

SAGE Consultants, Inc.
 LAT 34°-13'-00" N LONG 119°-02'-40" W ELEV 55.438m
 Surveyors • Application Developers • GIS Integrators • Engineers
 1978 Ventura Blvd., CARMARILLO CA 93010-7847
 Tel. (805) 482-6088 • Fax (805) 389-9615
 www.sagecon.com

BOEING SSFL
 CTL1-1A & 1B
 POST EXCAVATION EXHIBIT

5800 WOOLSEY CANYON ROAD
 CANOGA PARK, CA 91304-1148
 COUNTY OF VENTURA STATE OF CALIFORNIA

SHEET
1
 OF 1

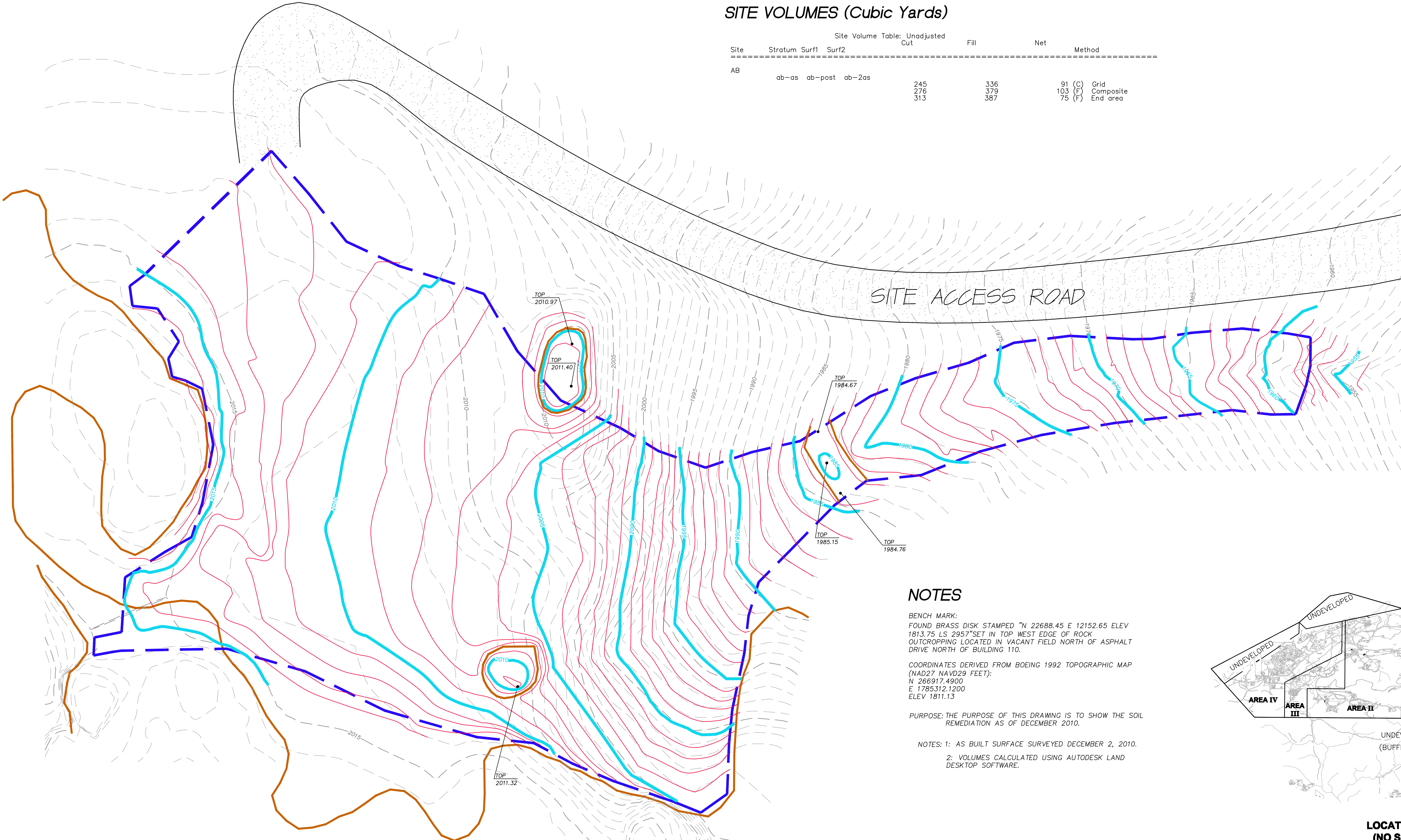
Robert E. Littell
 ROBERT E. LITTELL RCE 13395

SCALE: 1"=10'

N:\projects\PROJING\Outfall 009 ISRA from 1985\DWG\CTL1-1AB.dwg Apr 07, 2011, 2:33pm Robert

SITE VOLUMES (Cubic Yards)

Site	Site Volume Table: Unadjusted			Fill	Net	Method
	Stratum	Surf1	Surf2			
AB	ab-as	ab-post	ab-2as	245	336	91 (C) Grid
				276	379	103 (F) Composite
				313	387	75 (F) End area



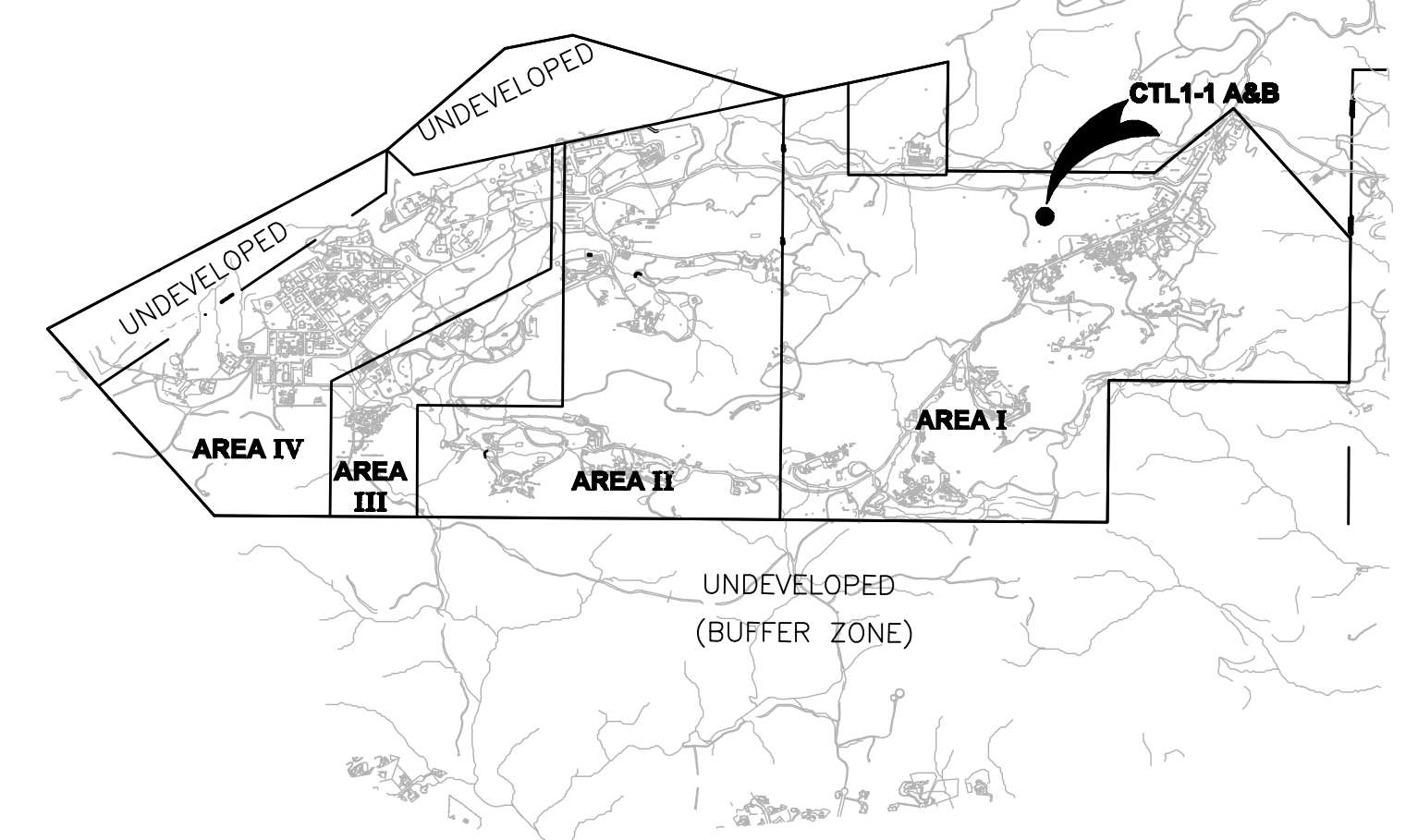
NOTES

BENCH MARK:
 FOUND BRASS DISK STAMPED "N 22688.45 E 12152.65 ELEV 1813.75 LS 2957" SET IN TOP WEST EDGE OF ROCK OUTCROPPING LOCATED IN VACANT FIELD NORTH OF ASPHALT DRIVE NORTH OF BUILDING 110.

COORDINATES DERIVED FROM BOEING 1992 TOPOGRAPHIC MAP (NAD27 NAVD29 FEET):
 N 266917.4900
 E 1785312.1200
 ELEV 1811.13

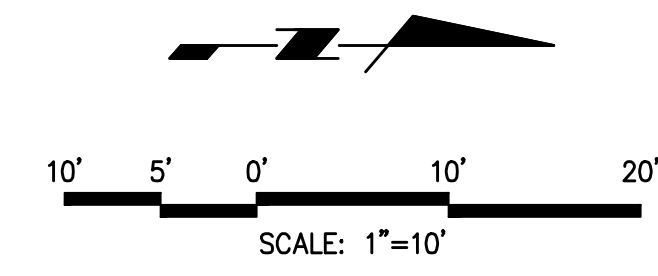
PURPOSE: THE PURPOSE OF THIS DRAWING IS TO SHOW THE SOIL REMEDIATION AS OF DECEMBER 2010.

NOTES: 1: AS BUILT SURFACE SURVEYED DECEMBER 2, 2010.
 2: VOLUMES CALCULATED USING AUTODESK LAND DESKTOP SOFTWARE.



LEGEND

- 1920 5' CONTOURS (DECEMBER 2010)
- 1' CONTOURS (DECEMBER 2010)
- ROCK FORMATION
- 1500 5' CONTOURS (JUNE 2010)
- 1' CONTOURS (JUNE 2010)
- - - EXCAVATION LIMITS
- DIRT ROAD



Robert E. Littell
 ROBERT E. LITTELL RCE 13395

REVISED: 02-23-2011 (MODIFIED CONTOURS)

 SAGE consultants, Inc. LAT 34°13'00" N LONG 119°02'40" W ELEV 55.438m Surveying • Application Development • GIS Integration • Engineering 1978 Ventura Blvd., CAMARILLO CA 93010-7847 Tel. (805) 482-6088 • Fax (805) 389-9815 www.sagecon.com	BOEING SSFL CTL1-1A & 1B AS-BUILT EXHIBIT	SHEET 1 OF 1
	SCALE: 1"=10' DATE: 12-8-2010	

5800 WOOLSEY CANYON ROAD
 CANOGA PARK, CA 91304-1148
 COUNTY OF VENTURA STATE OF CALIFORNIA