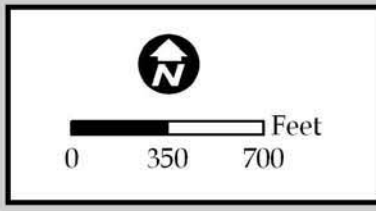
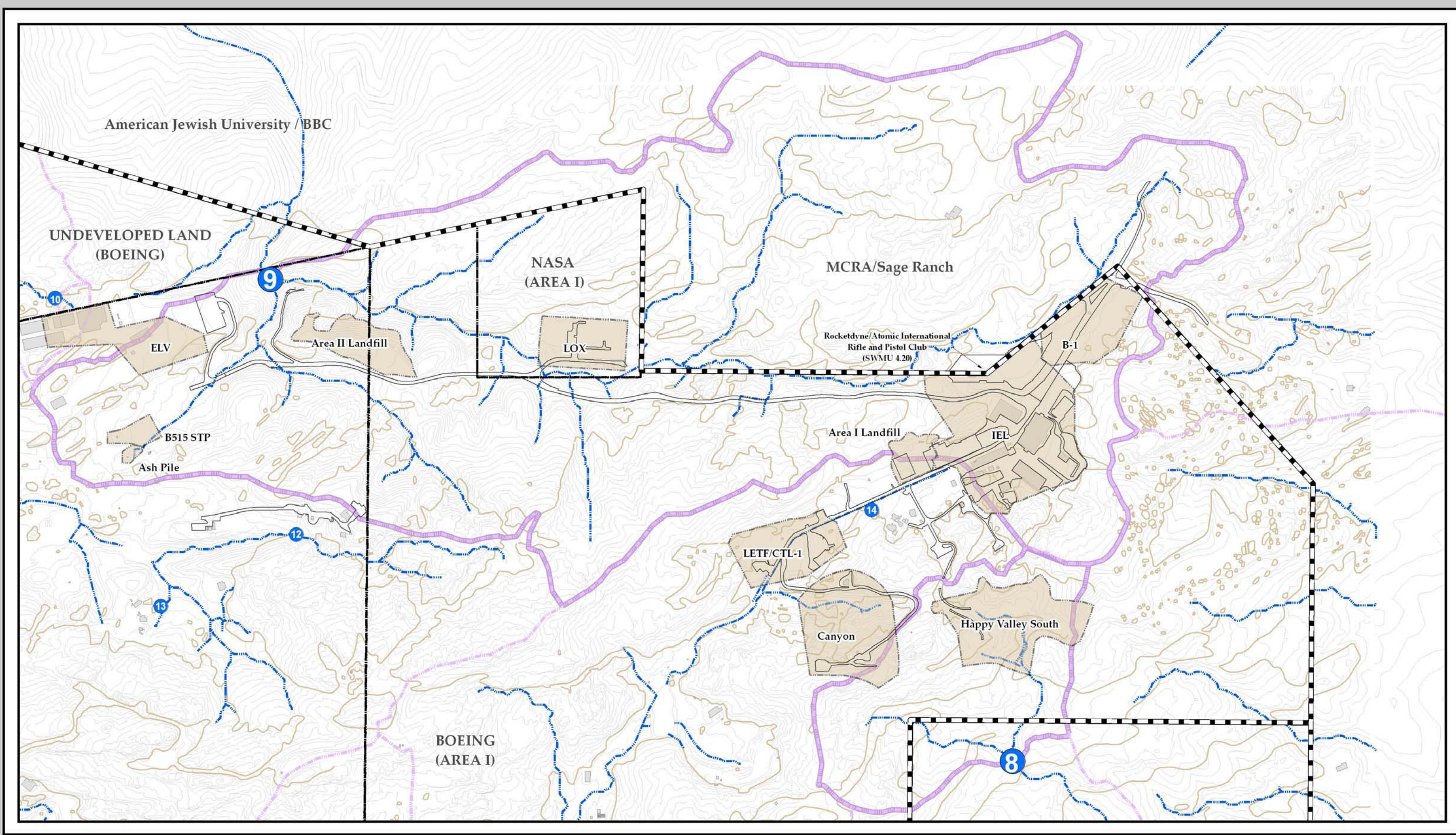


FIGURES



Outfalls 008 and 009 Location Map

Date: September 17, 2010
 File: \\UspsInetapp1\dei\rocketdyne gis\MasterGISFiles\ISRA_Projects\ISRA_MXD\BMP\CompliancePlanSep2010\OF8_9Location.mxd

MWH

FIGURE 1-1

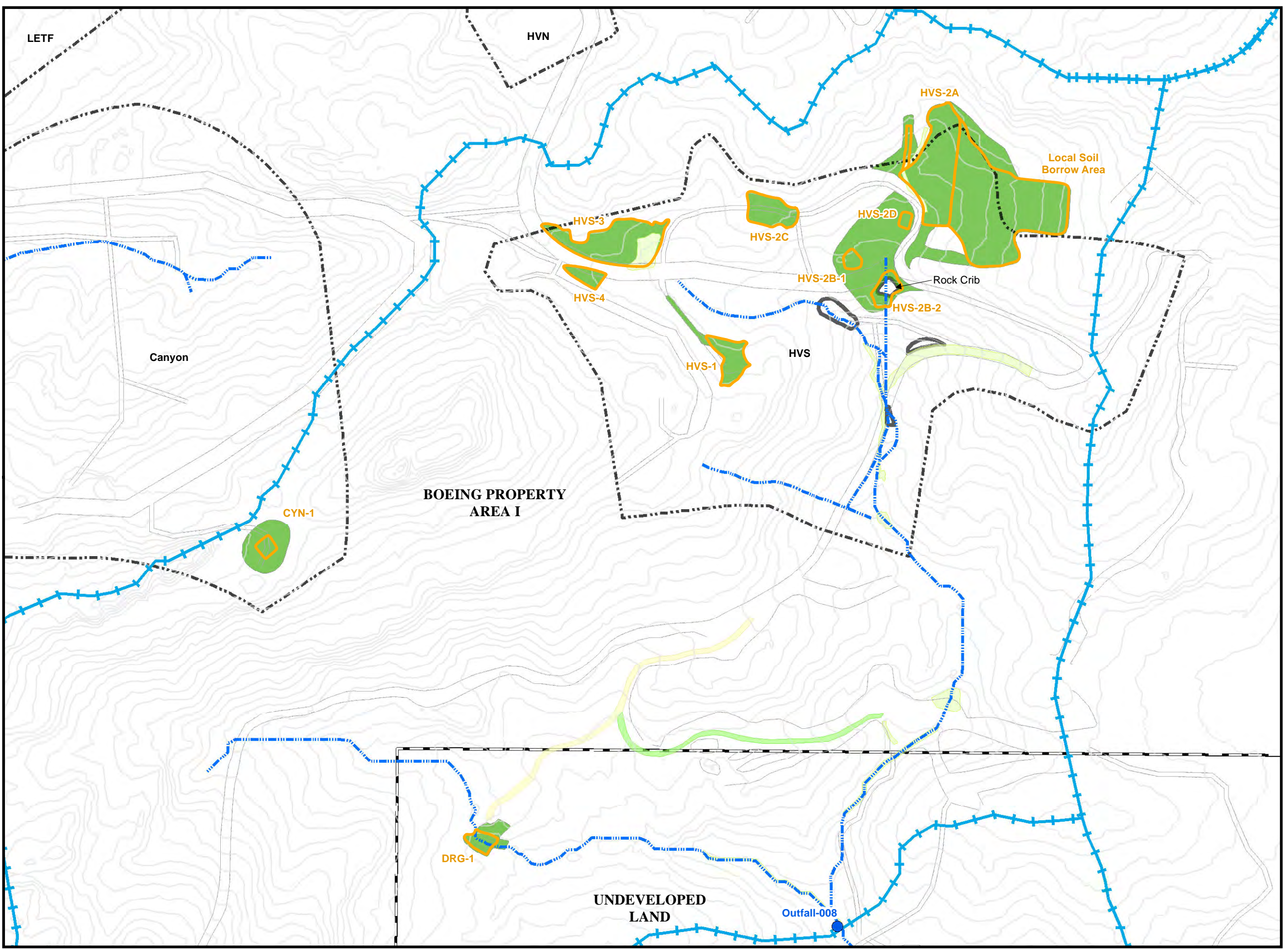
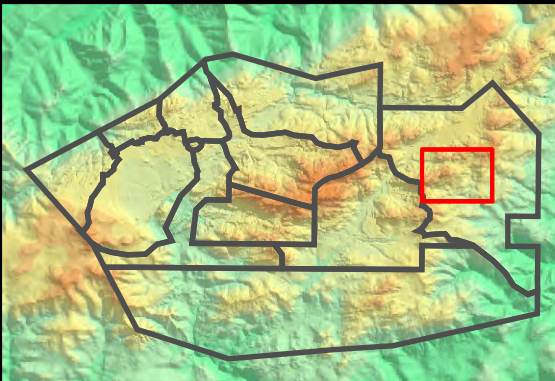
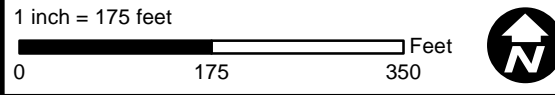
BMP Installations 2010-2011 Outfall 008 Watershed

- Base Map Legend**
- Administrative Area Boundary
 - RFI Site Boundary
 - NPDES Outfall
 - Drainage
 - Non Jurisdictional Surface Water Pathway
 - Surface Water Divide
 - A/C Paving
 - Dirt Road
 - Elevation Contour

- Data Legend**
- Actual ISRA Excavation Boundary
 - ISRA Areas planned for future remediation
 - Hydroseed (Fall 2010 / Winter 2011)
 - Planting Area (Fall 2010/ Winter 2011)
 - Road Abandonment and Restoration (Fall 2010)
 - Road Erosion Control Measures (Fall 2010)

Figure Notes:
1. Topographic contours were collected June 2, 2010 by Sage Consultants, Inc., and represent pre-excitation conditions.

Path: T:\projects\rock3\ISRA\Figures\Outfall-008\Hydroseeding_rev.mxd Date: 7/29/2011



SANTA SUSANA FIELD LABORATORY

FIGURE 1-2

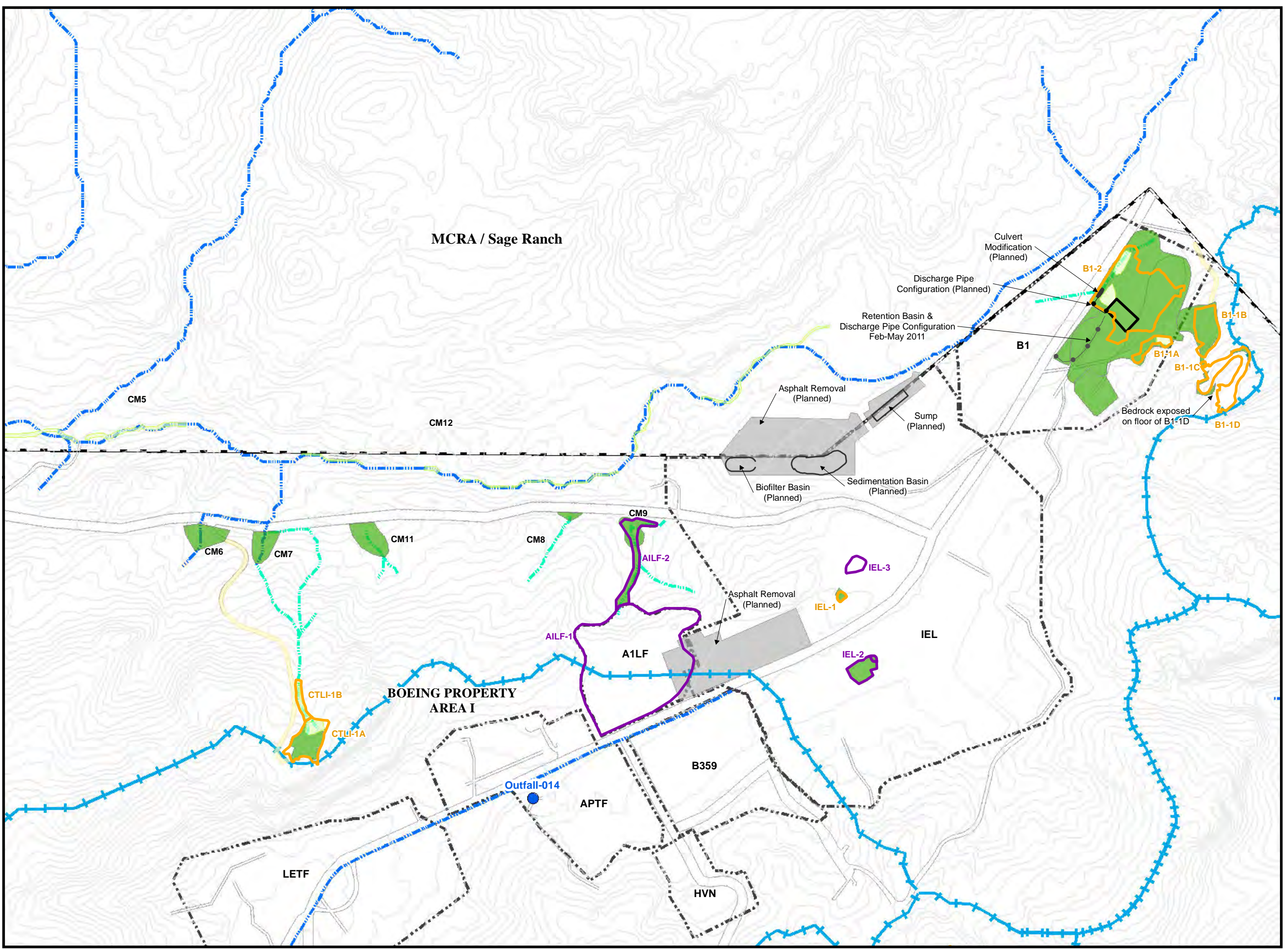
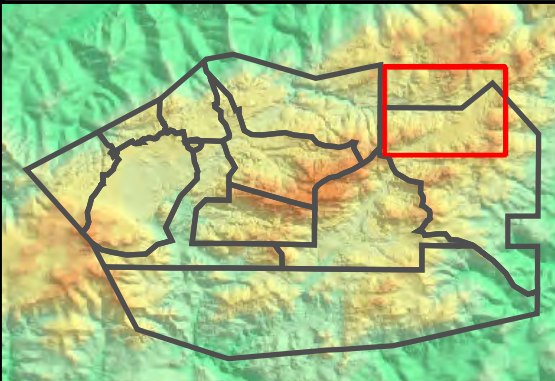
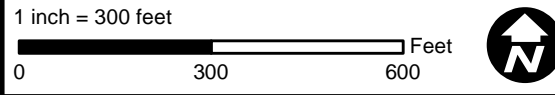
BMP Installations 2010-2011 Eastern Outfall 009 Watershed

- Base Map Legend**
- Administrative Area Boundary
 - RFI Site Boundary
 - NPDES Outfall
 - Drainage
 - Non Jurisdictional Surface Water Pathway
 - Surface Water Divide
 - A/C Paving
 - Dirt Road
 - Elevation Contour

- Data Legend**
- Actual ISRA Excavation Boundary
 - ISRA Areas planned for future remediation
 - Hydroseed (Fall 2010 / Winter 2011)
 - Planting Area (Fall 2010/ Winter 2011)
 - Road Abandonment and Restoration (Fall 2010)
 - Road Erosion Control Measures (Fall 2010)
 - Planned BMP Activities

Figure Notes:
1. Topographic contours were collected June 2, 2010 by Sage Consultants, Inc., and represent pre-excavation conditions.

Path: T:\projects\rock3\ISRA\Figures\Outfall-009\Hydroseeding_East_rev.mxdDate: 7/29/2011



SANTA SUSANA FIELD LABORATORY

FIGURE 1-3

BMP Installations 2010-2011 Western Outfall 009 Watershed

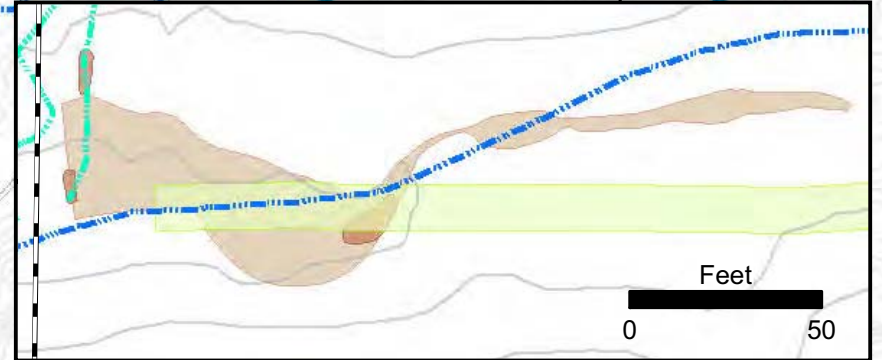
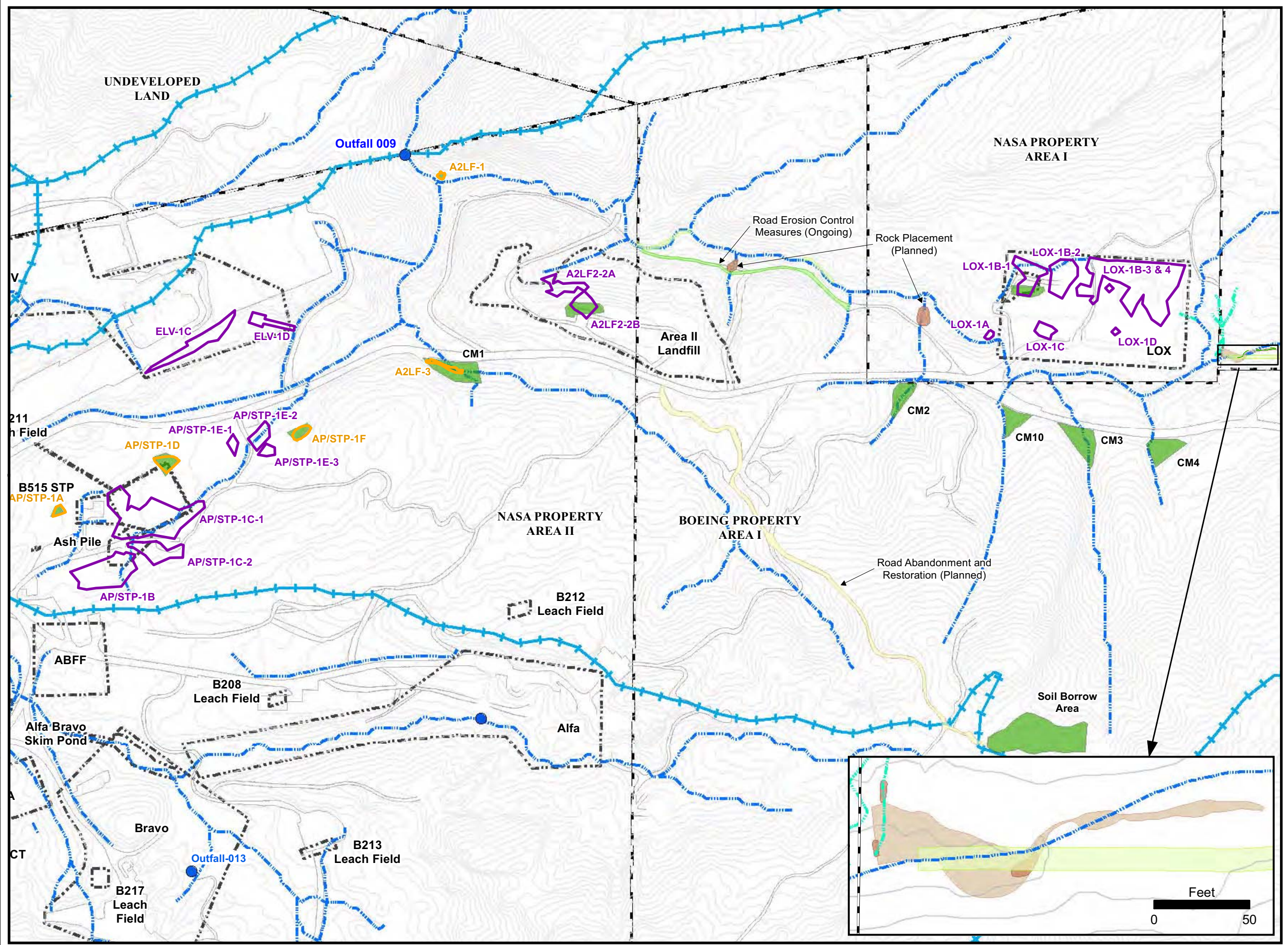
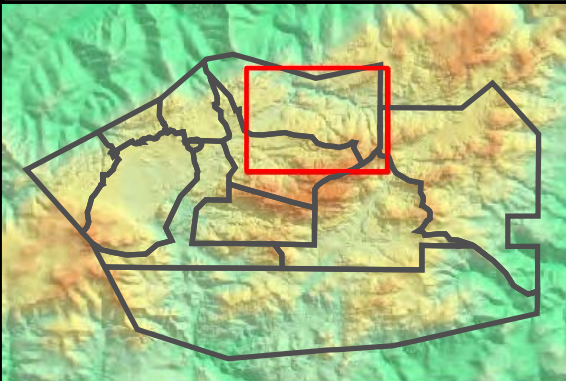
- Base Map Legend**
- Administrative Area Boundary
 - Surface Water Divide
 - RFI Site Boundary
 - NPDES Outfall
 - Drainage
 - Non Jurisdictional Surface Water Pathway
 - A/C Paving
 - Dirt Road
 - Elevation Contour

- Data Legend**
- Actual ISRA Excavation Boundary
 - ISRA Areas planned for future remediation
 - Hydroseed (Fall 2010 / Winter 2011)
 - Planting Area (Fall 2010/ Winter 2011)
 - Road Abandonment and Restoration (Fall 2010)
 - Road Erosion Control Measures (Fall 2010)
 - Erosion Control Fabric
 - Rock Placement (Fall 2010)

Figure Notes:
1. Topographic contours were collected June 2, 2010 by Sage Consultants, Inc., and represent pre-excavation conditions.

Path: T:\projects\rock3\ISRA\Figures\Outfall-009\Hydroseeding_West_rev.DT. Date: 7/29/2011

1 inch = 350 feet
0 350 700



Outfalls 008 and 009 BMP and ISRA Monitoring

- Base Map Legend**
- Administrative Area
 - Boundary
 - RFI Site Boundary
 - Subwatershed Boundaries
 - NPDES Outfall
 - Drainage
 - Non Jurisdictional Surface Water Pathway
 - Surface Water Divide

- Figure Legend**
- Primary Downgradient Performance Monitoring Sample Location
 - Upgradient Performance Monitoring Sample Location
 - Secondary Downgradient Performance Monitoring Sample Location
 - BMP Sample Location
 - ISRA Excavation Boundary
 - Post-2010 ISRA Area Boundary

Note:

1. Aerial imagery from 2010 Sage Consulting.
2. Topographic contours from 2010 Sage Consulting.
3. Inspection/sampling at offsite monitoring locations subject to property owner approval.

Path: T:\projects\rock3\ISRA\Figures\PerfMon\Overview_11x17.mxd Date: 7/18/2011

1 inch = 700 feet

