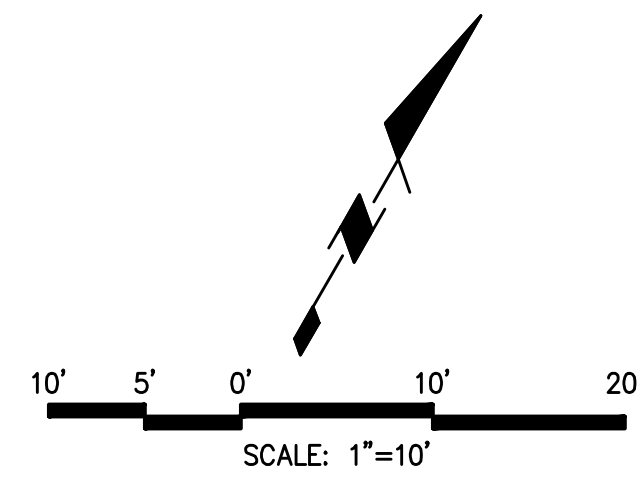
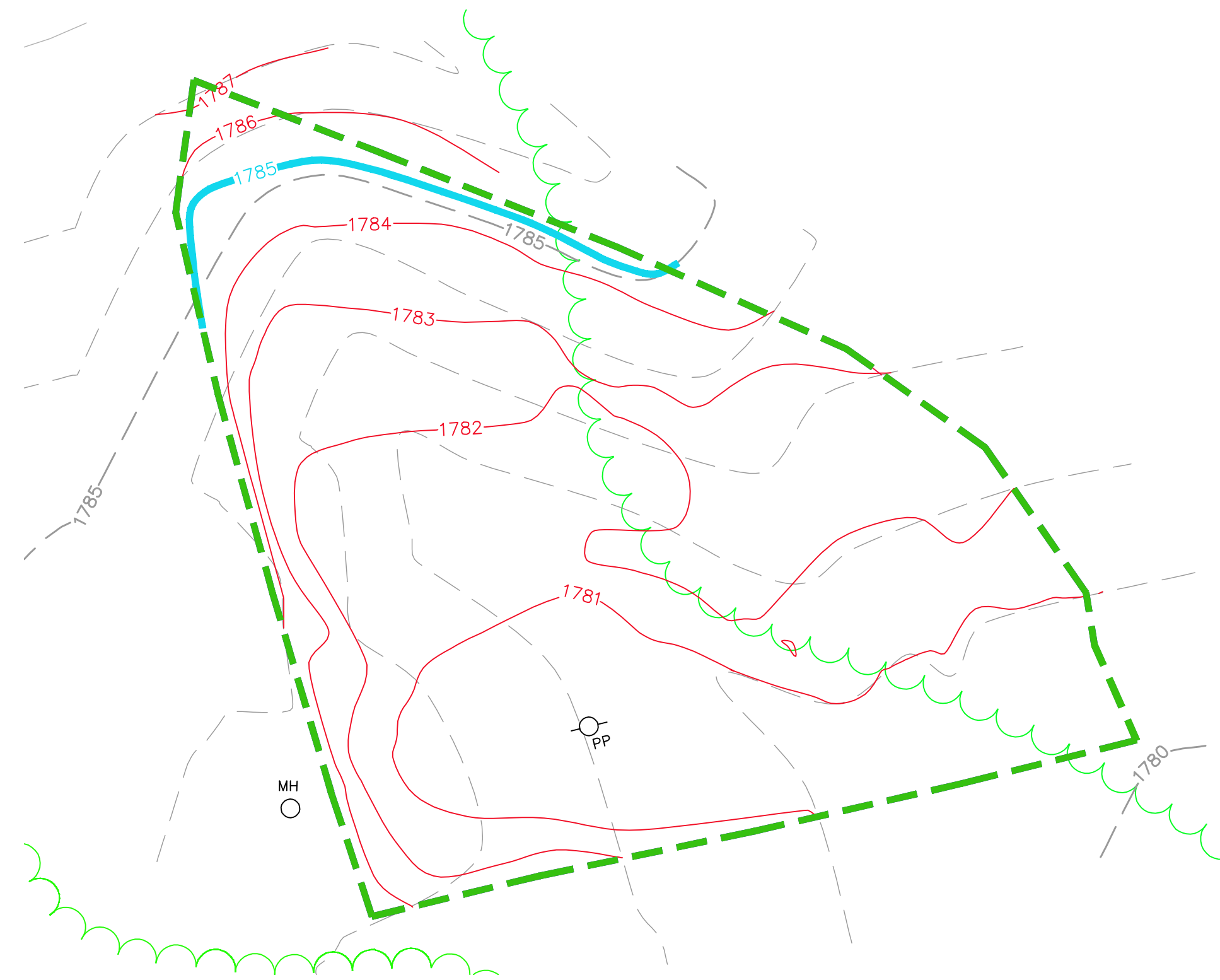


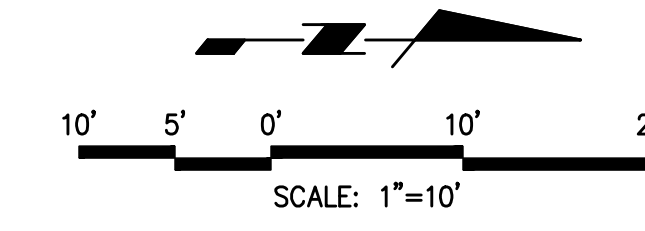
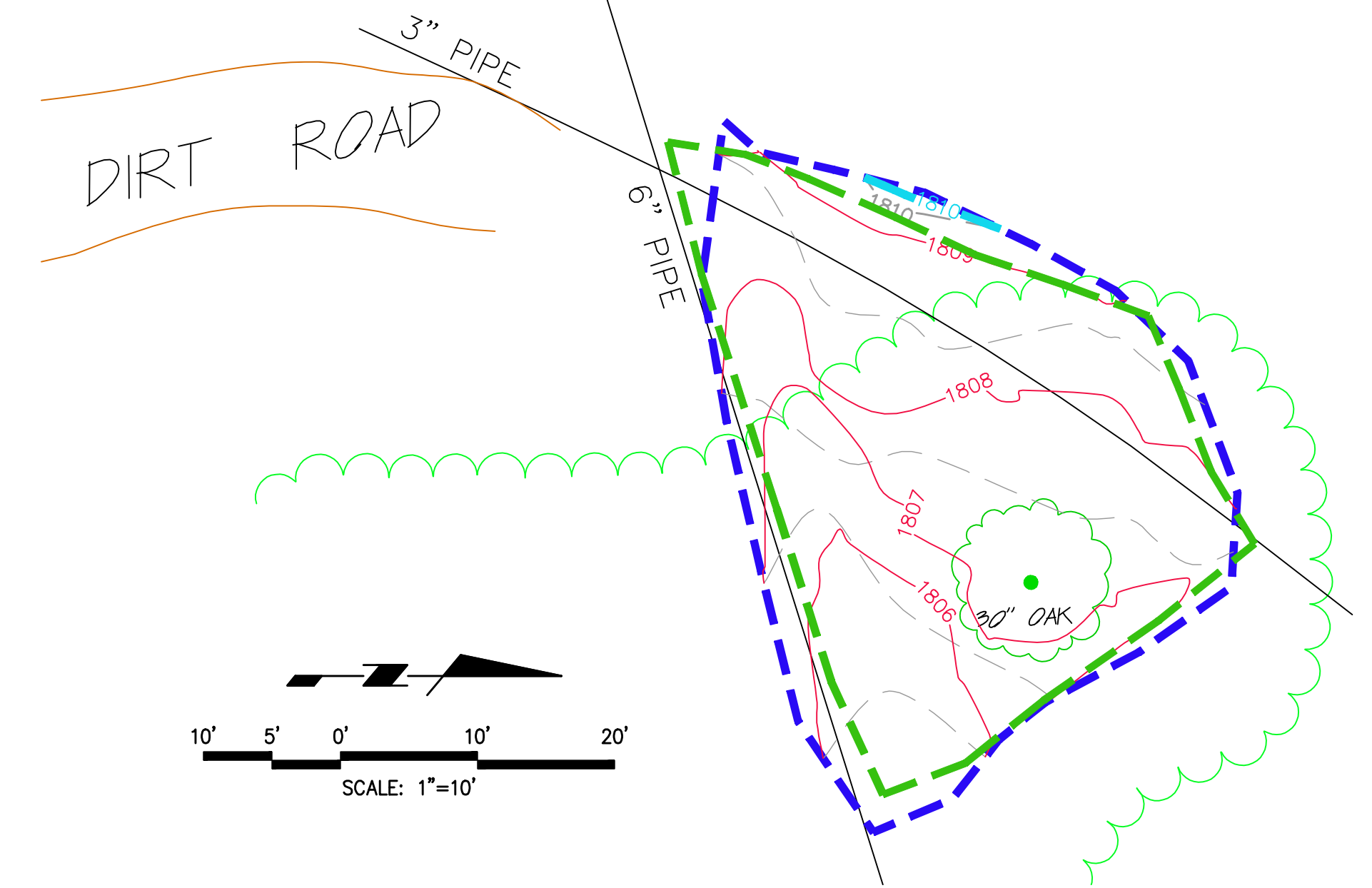
AREA-D



NOTE: SURVEYED EXCAVATION LIMITS AND MWH EXCAVATION LIMITS ARE THE SAME IN AREA D



AREA-A



AREA A SITE VOLUMES (Cubic Yards)

Site	Stratum	Site Volume Table: Unadjusted		Net	Method	
		Surf1	Surf2			
A	A	A-Orig	A-Post	11	0	10 (C) Grid*
				30	2	28 (C) Composite*
				27	4	24 (C) End area*

AREA D SITE VOLUMES (Cubic Yards)

Site	Stratum	Site Volume Table: Unadjusted		Net	Method	
		Surf1	Surf2			
D	D	D-Orig	D-Post	70	1	69 (C) Grid
				71	6	65 (C) Composite
				74	5	69 (C) End area

AREA F SITE VOLUMES (Cubic Yards)

Site	Stratum	Site Volume Table: Unadjusted		Net	Method	
		Surf1	Surf2			
F	F	F-Orig	F-Post	30	1	29 (C) Grid*
				60	5	54 (C) Composite*
				58	5	53 (C) End area*

NOTES

BENCH MARK:
FOUND BRASS DISK STAMPED "N 22688.45 E 12152.65 ELEV 1813.75 LS 2957" SET IN TOP WEST EDGE OF ROCK OUTCROPPING LOCATED IN VACANT FIELD NORTH OF ASPHALT DRIVE NORTH OF BUILDING 110.

COORDINATES DERIVED FROM BOEING 1992 TOPOGRAPHIC MAP (NAD27 NAVD29 FEET):
N 266917.4900
E 1785312.1200
ELEV 1811.13

PURPOSE: THE PURPOSE OF THIS DRAWING IS TO CALCULATE THE VOLUME OF ISRA SOIL REMOVED AS OF NOVEMBER 2010.

- NOTES: 1: EXISTING SURFACE SURVEYED DECEMBER 2, 2010.
- 2: VOLUMES CALCULATED USING AUTODESK LAND DESKTOP SOFTWARE.

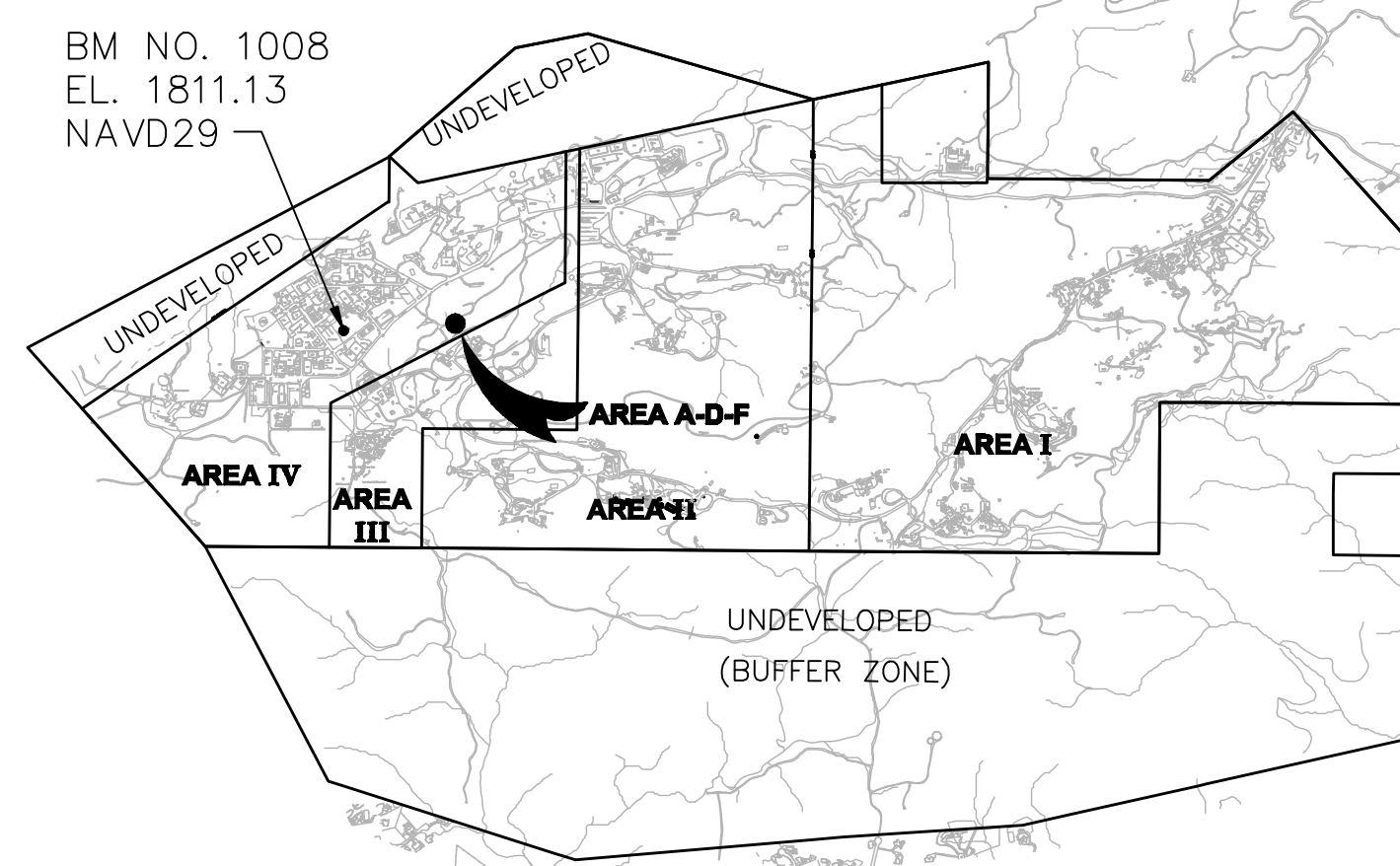
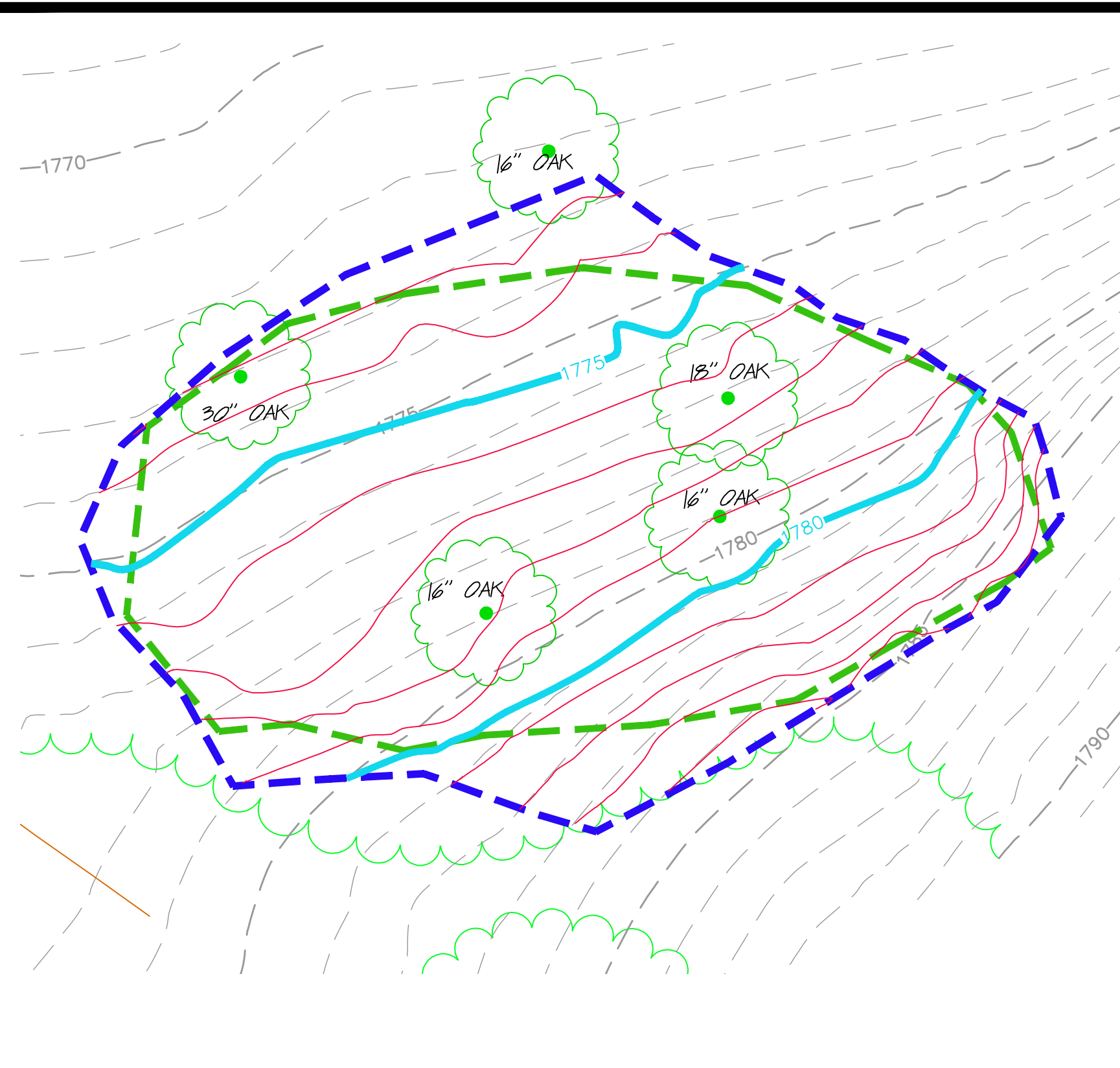
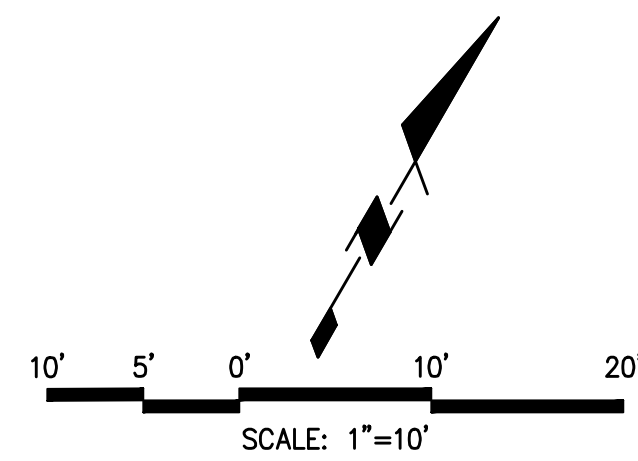
THE TOPOGRAPHIC INFORMATION SHOWN HEREON WAS PREPARED BY GOLDEN STATE AERIAL SURVEYS. THIS MAP WAS PREPARED AT A SCALE OF 1" = 40' WITH A ONE FOOT CONTOUR INTERVAL, PREPARED FROM AERIAL PHOTOGRAPHY DATED JUNE 2, 2010. THE POST EXCAVATION DATA WAS PREPARED FROM A FIELD SURVEY DATED NOVEMBER 12, 2010.

REVISED: 05-11-2011 (REVISED AREA F WITH EXISTING ELEVATIONS, ADDED BOUNDARY PROVIDED BY MWH)
REVISED: 05-04-2011 (REVISED CONTOURS, UPDATED BOUNDARY AND VOLUME CALCULATIONS)

LEGEND

- 1920 5' CONTOURS (NOVEMBER 2010)
- 1' CONTOURS (NOVEMBER 2010)
- 1500 5' CONTOURS (JUNE 2010)
- 1' CONTOURS (JUNE 2010)
- SURVEYED EXCAVATION LIMITS
- MWH EXCAVATION LIMITS
- DIRT ROAD
- PP POWER POLE
- MH MANHOLE
- WELL MONITORING WELL
- BRUSH LINE
- OAK TREE
- GUY WIRE

AREA-F



LOCATION MAP (NO SCALE)

Robert E. Littell
ROBERT E. LITTELL RCE 13395



SAGE consultants, Inc.

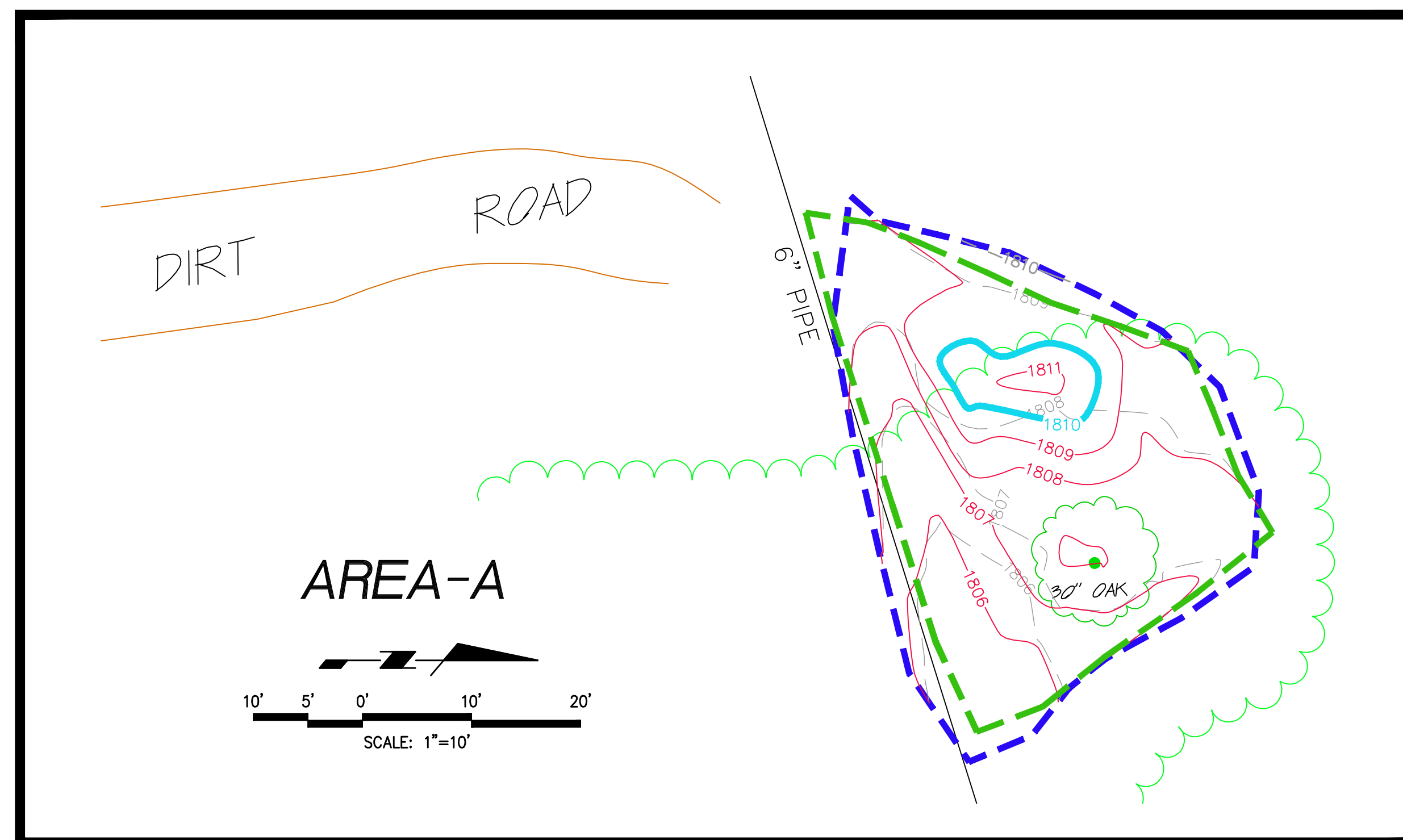
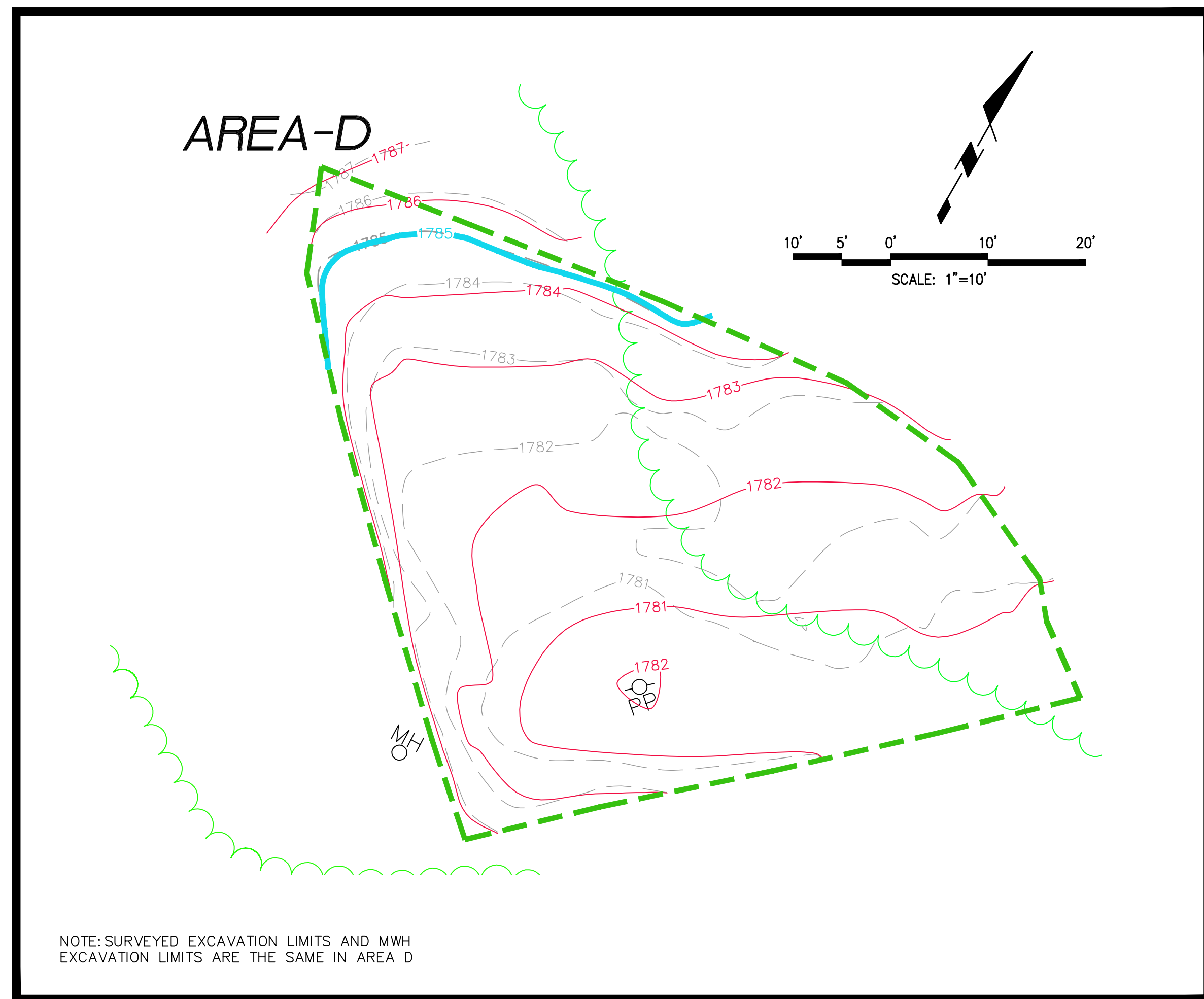
LAT 34°-15'-00" N LONG 119°-02'-40" W ELEV 55.438m
Surveyors • Application Developers • GIS Integrators • Engineers
1978 Ventura Blvd., CAMARILLO CA 93010-7847
Tel. (805) 482-6088 • Fax (805) 389-9815
www.sagecon.com

NASA ISRA
AP/STP -1A, -1D, -1F
POST EXCAVATION EXHIBIT

5800 WOOLSEY CANYON ROAD
CANOGA PARK, CA 91304-1148
COUNTY OF VENTURA STATE OF CALIFORNIA

SHEET
1
OF 1

SCALE: 1"=10'
DATE: 12-6-2010
JOB NUMBER: 494-V-1986
DWG NAME: AREAS-A_D_F-POST



- LEGEND**
- 1920 5' CONTOURS (NOVEMBER 2010)
 - 1' CONTOURS (NOVEMBER 2010)
 - 1500 5' CONTOURS (JUNE 2010)
 - - - 1' CONTOURS (JUNE 2010)
 - - - SURVEYED EXCAVATION LIMITS
 - - - MWH EXCAVATION LIMITS
 - DIRT ROAD
 - POWER POLE
 - PP
 - MH
 - MANHOLE
 - WELL
 - MONITORING WELL
 - ~ BRUSH LINE
 - OAK TREE
 - GUY WIRE

NOTES

BENCH MARK:
 FOUND BRASS DISK STAMPED "N 22688.45 E 12152.65 ELEV 1813.75 LS 2957" SET IN TOP WEST EDGE OF ROCK OUTCROPPING LOCATED IN VACANT FIELD NORTH OF ASPHALT DRIVE NORTH OF BUILDING 110.

COORDINATES DERIVED FROM BOEING 1992 TOPOGRAPHIC MAP (NAD27 NAVD29 FEET):
 N 266917.4900
 E 1785312.1200
 ELEV 1811.13

PURPOSE: THE PURPOSE OF THIS DRAWING IS TO SHOW AS-BUILT TOPOGRAPHY AND CALCULATE THE VOLUME OF FILL SOIL AS OF DECEMBER 2010.

NOTES: 1: EXISTING SURFACE SURVEYED DECEMBER 2, 2010.
 2: VOLUMES CALCULATED USING AUTODESK LAND DESKTOP SOFTWARE.

THE TOPOGRAPHIC INFORMATION SHOWN HEREON WAS PREPARED BY GOLDEN STATE AERIAL SURVEYS. THIS MAP WAS PREPARED AT A SCALE OF 1" = 40' WITH A ONE FOOT CONTOUR INTERVAL. PREPARED FROM AERIAL PHOTOGRAPHY DATED JUNE 2, 2010. THE POST EXCAVATION DATA WAS PREPARED FROM A FIELD SURVEY DATED NOVEMBER 12, 2010 AND AS-BUILT DATA WAS PREPARED FROM A FIELD SURVEY DATED DECEMBER 2, 2010.

AREA A SITE VOLUMES (Cubic Yards)

Site	Stratum	Surf1	Surf2	Cut	Fill	Net	Method
Site Volume Table: Unadjusted							
A	AAS	A-Post	A-Asbuilt	0	8	8 (F)	Grid
				0	17	16 (F)	Composite
				1	13	12 (F)	End area

*Revised 5/4/2011 with new boundary

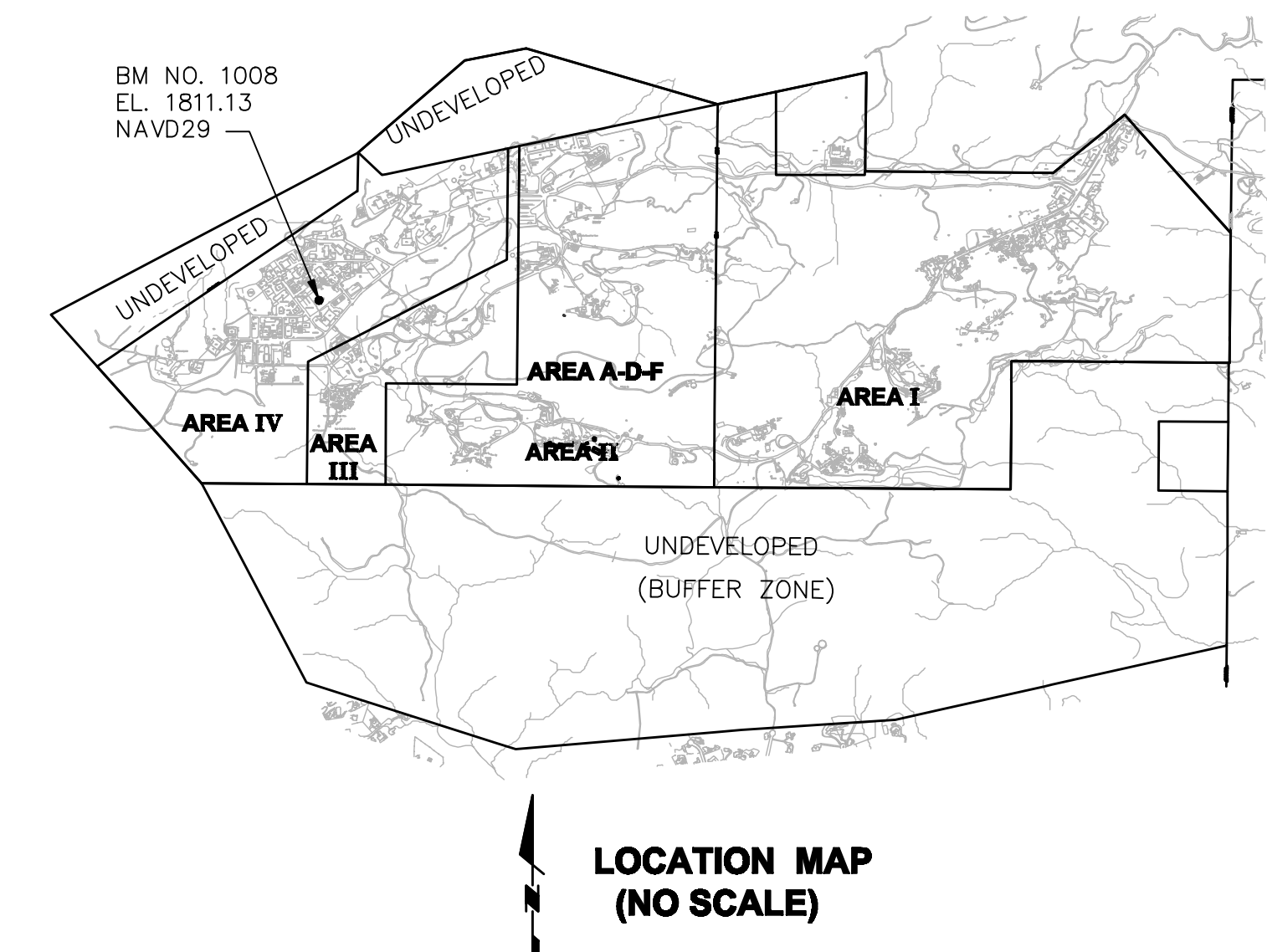
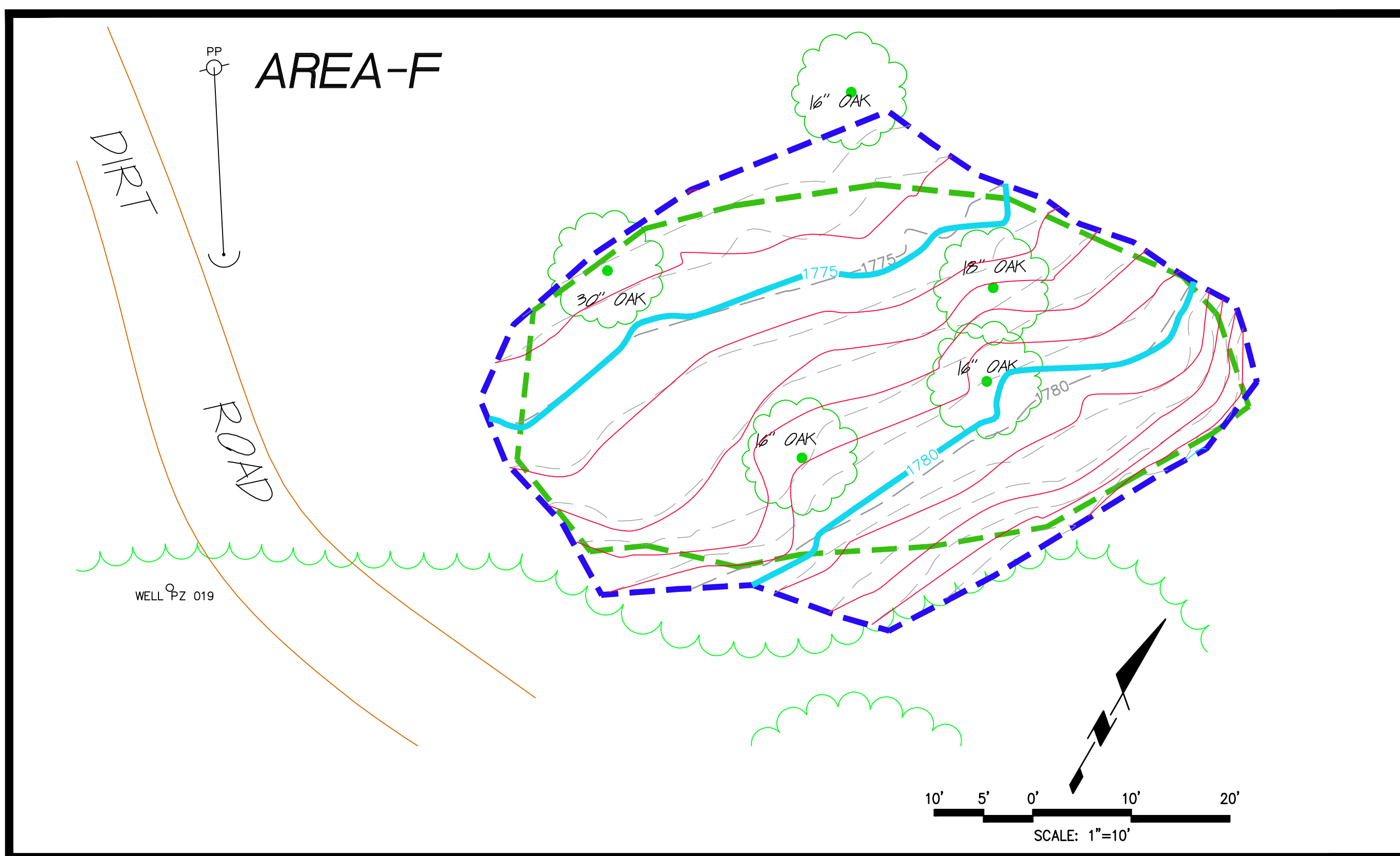
AREA D SITE VOLUMES (Cubic Yards)

Site	Stratum	Surf1	Surf2	Cut	Fill	Net	Method
Site Volume Table: Unadjusted							
D	DAS	D-Post	D-Asbuilt	10	21	12 (F)	Grid
				18	32	14 (F)	Composite
				16	34	18 (F)	End area

AREA F SITE VOLUMES (Cubic Yards)

Site	Stratum	Surf1	Surf2	Cut	Fill	Net	Method
Site Volume Table: Unadjusted							
F	FAS	F-Post	F-Asbuilt	4	8	3 (F)	Grid
				13	15	3 (F)	Composite
				12	15	3 (F)	End area

*Revised 5/11/2011 with updated post contours

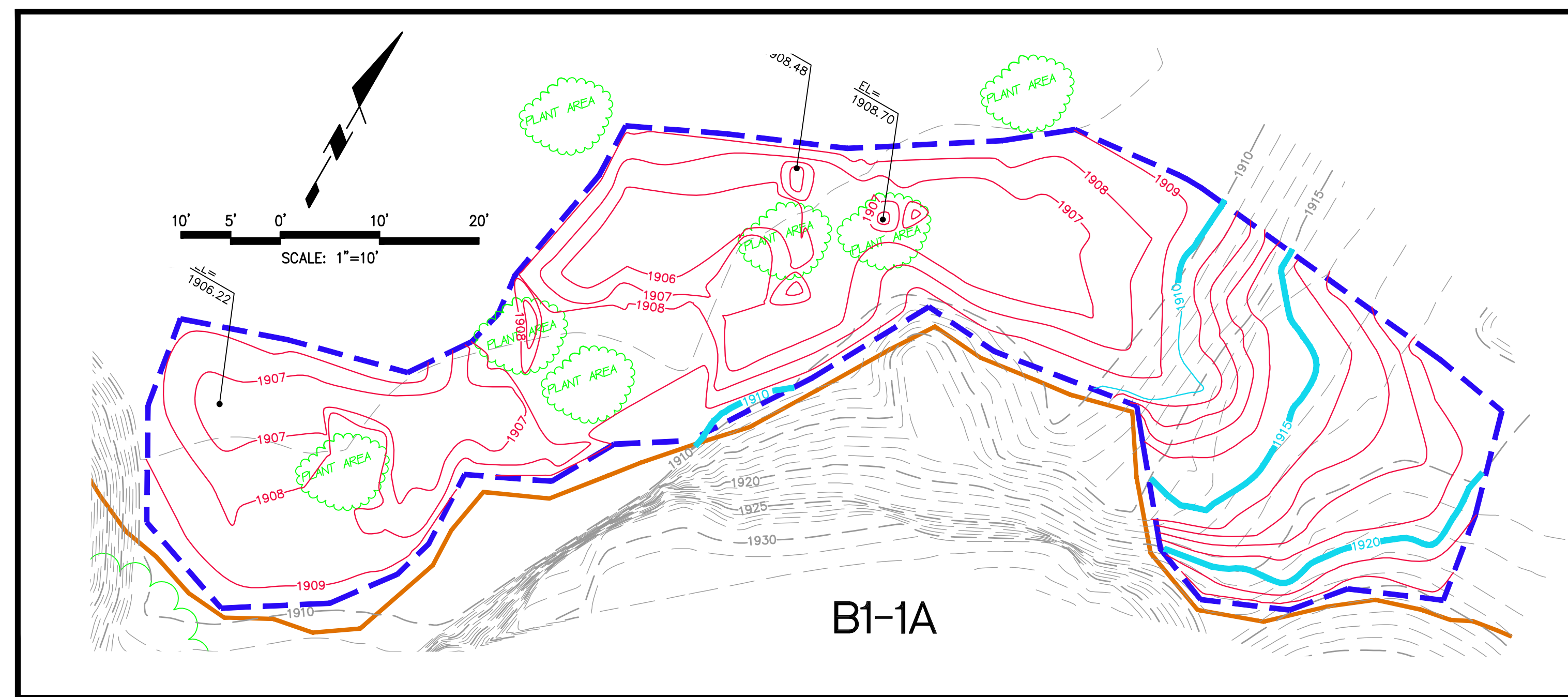


Robert E. Littell
 ROBERT E. LITTELL RCE 13395



REVISED: 05-11-2011 (REVISED AREA F WITH POST ELEVATIONS, ADDED BOUNDARY PROVIDED BY MWH)
 REVISED: 05-04-2011 (REVISED CONTOURS, UPDATED BOUNDARY AND VOLUME CALCULATIONS)

 LAT 34°-13'-00" N LONG 119°-02'-40" W ELEV 55.458m Surveyors • Application Developers • GIS Integrators • Engineers 1978 Ventura Blvd., CAMARILLO CA 93010-7847 Tel. (805) 482-6088 • Fax (805) 389-9815 www.sagecon.com	NASA ISRA AP/STP -1A, -1D, -1F AS-BUILT EXHIBIT	SHEET 1 OF 1
	SCALE: 1"=10' DATE: 12-6-2010	
5800 WOOLSEY CANYON ROAD CANOGA PARK, CA 91304-1148		COUNTY OF VENTURA STATE OF CALIFORNIA



B1-1A SITE VOLUMES (Cubic Yards)

Site	Site Volume Table: Unadjusted			Net	Method	
	Stratum	Surf1	Surf2			Cut
B1-1A	new5	surface5	surface5a	214	0	214 (C) Grid
				244	1	243 (C) End area
				232	1	231 (C) Composite

B1-1B SITE VOLUMES (Cubic Yards)

Site	Site Volume Table: Unadjusted			Net	Method	
	Stratum	Surf1	Surf2			Cut
B1-1B	new4	surface4	surface4a	460	13	447 (C) Grid
				556	36	520 (C) Composite
				576	43	533 (C) End area

NOTES

BENCH MARK:
 FOUND BRASS DISK STAMPED "N 22688.45 E 12152.65 ELEV
 1813.75 LS 2957" SET IN TOP WEST EDGE OF ROCK
 OUTCROPPING LOCATED IN VACANT FIELD NORTH OF ASPHALT
 DRIVE NORTH OF BUILDING 110.

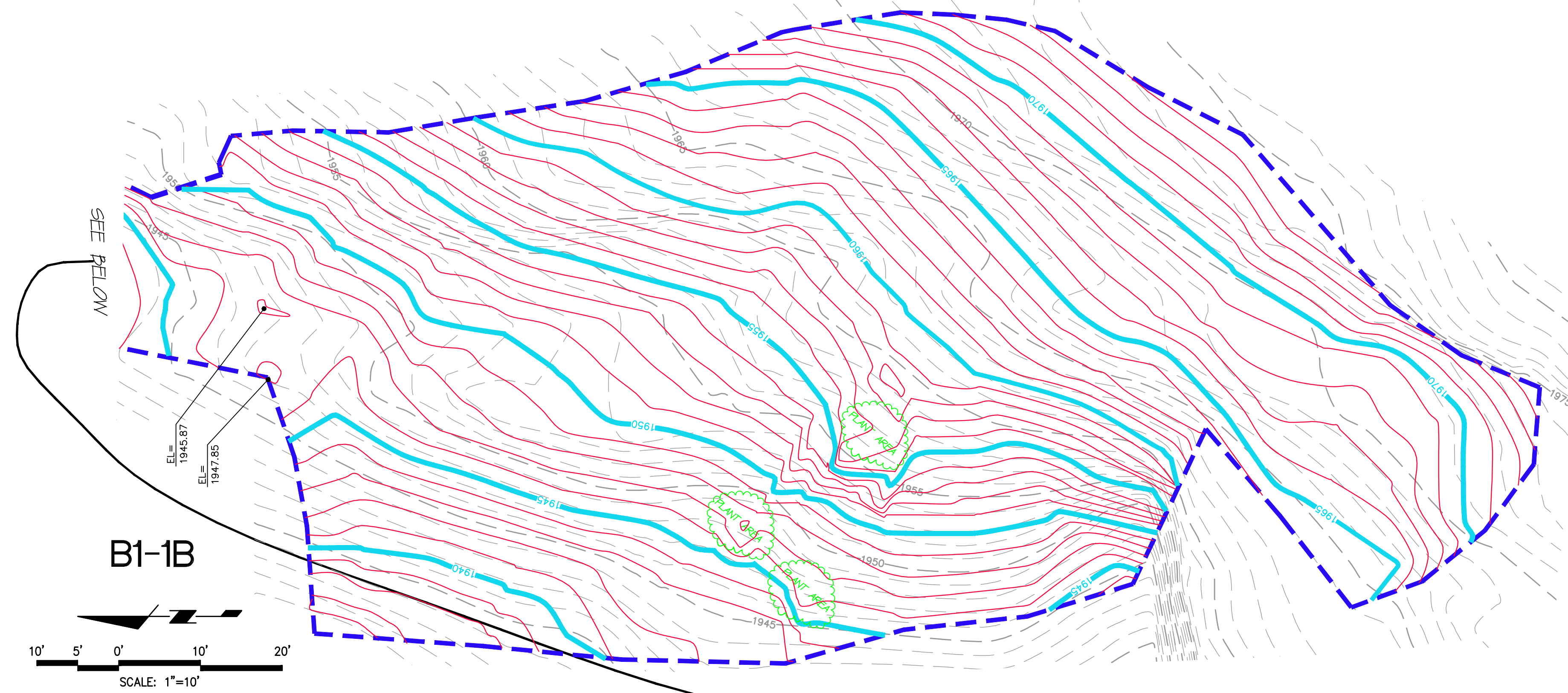
COORDINATES DERIVED FROM BOEING 1992 TOPOGRAPHIC MAP
 (NAD27 NAVD29 FEET):
 N 266917.4900
 E 1785312.1200
 ELEV 1811.13

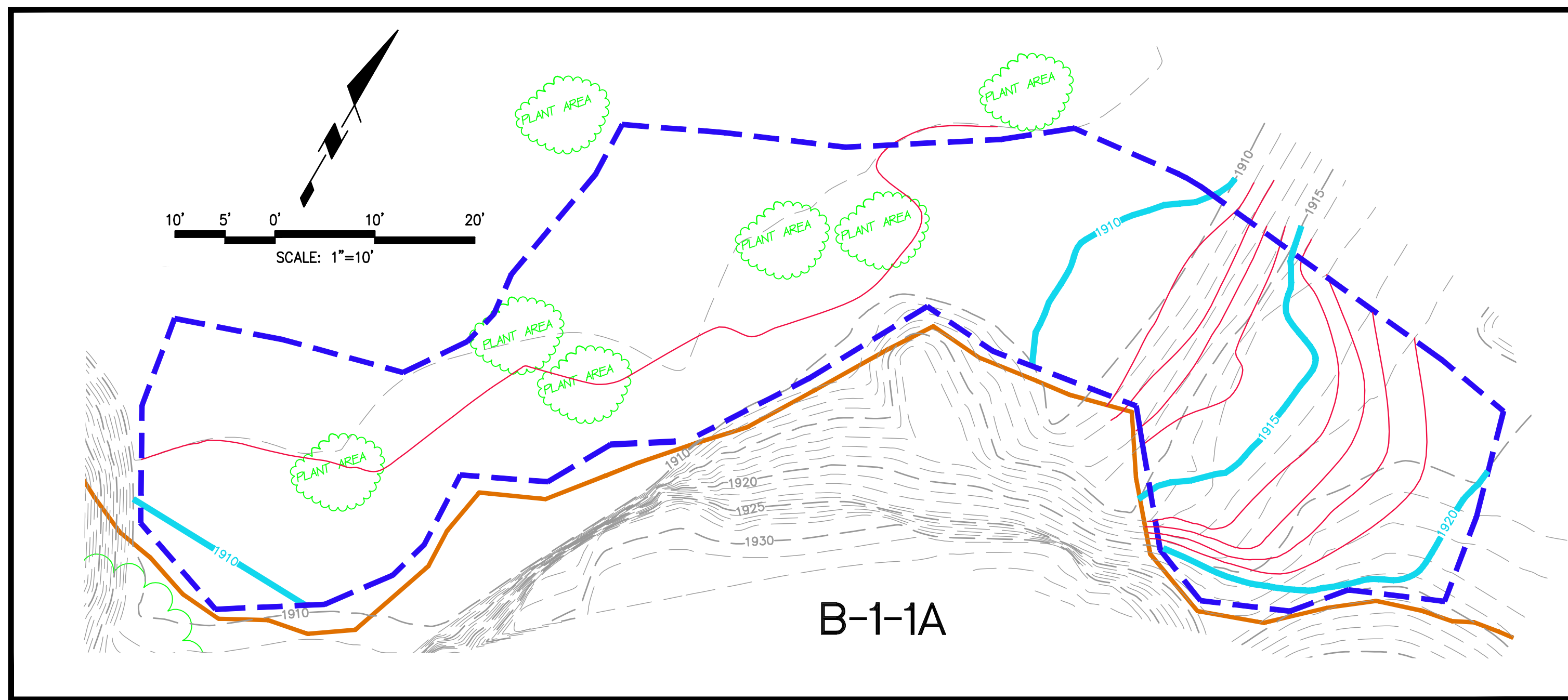
PURPOSE: THE PURPOSE OF THIS DRAWING IS TO CALCULATE THE
 VOLUME OF ISRA SOIL REMOVED AS OF OCTOBER 2010.

- NOTES: 1: POST EXCAVATION SURFACE SURVEYED OCTOBER 25, 2010.
 2: VOLUMES CALCULATED USING AUTODESK LAND
 DESKTOP SOFTWARE.

LEGEND

- 5' CONTOURS (OCTOBER 2010)
- 1' CONTOURS (OCTOBER 2010)
- ROCK FORMATION
- 5' CONTOURS (JUNE 2010)
- 1' CONTOURS (JUNE 2010)
- EXCAVATION LIMITS





B1-1A SITE VOLUMES (Cubic Yards)

Site	Stratum		Site Volume Table: Unadjusted		Net	Method
	Surf1	Surf2	Cut	Fill		
A	a-as	a-post	A-AS			
				3	32	29 (F) Grid
				19	105	85 (F) Composite
				20	108	89 (F) End area

B1-1B SITE VOLUMES (Cubic Yards)

Site	Stratum		Site Volume Table: Unadjusted		Net	Method
	Surf1	Surf2	Cut	Fill		
B	b-as	b-post	B-AS			
				70	35	35 (C) Grid
				122	67	55 (C) Composite
				133	73	59 (C) End area

NOTES

BENCH MARK:
 FOUND BRASS DISK STAMPED "N 22688.45 E 12152.65 ELEV 1813.75 LS 2957" SET IN TOP WEST EDGE OF ROCK OUTCROPPING LOCATED IN VACANT FIELD NORTH OF ASPHALT DRIVE NORTH OF BUILDING 110.

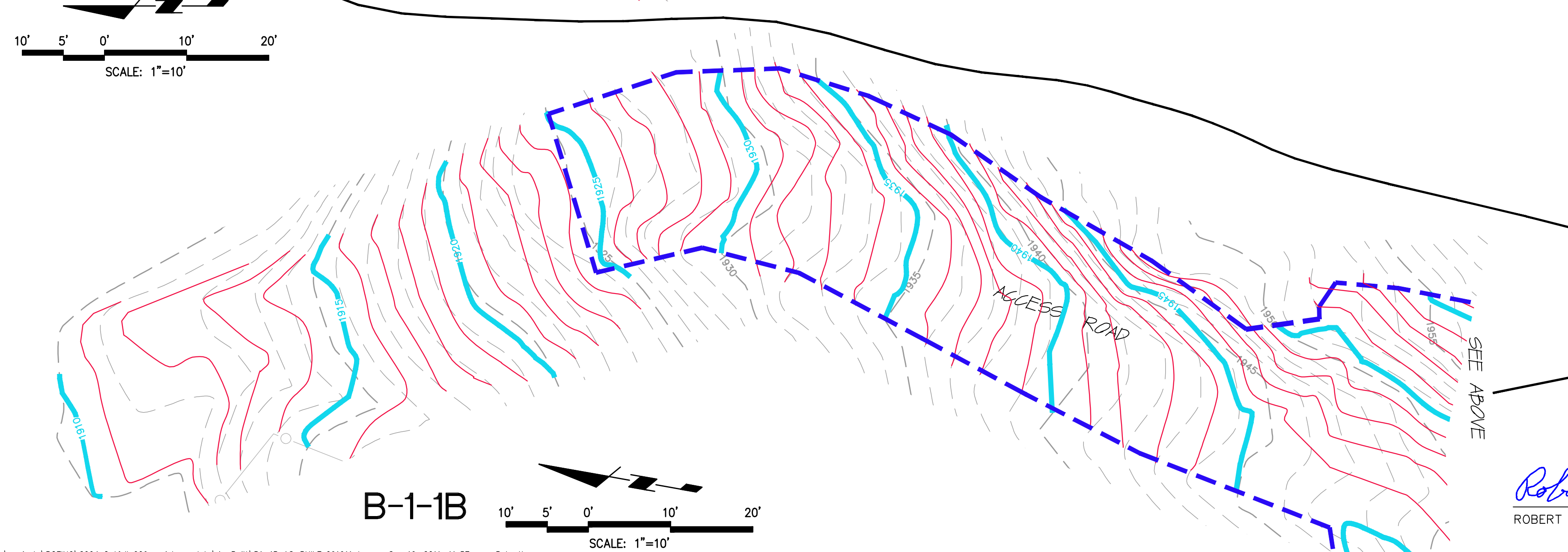
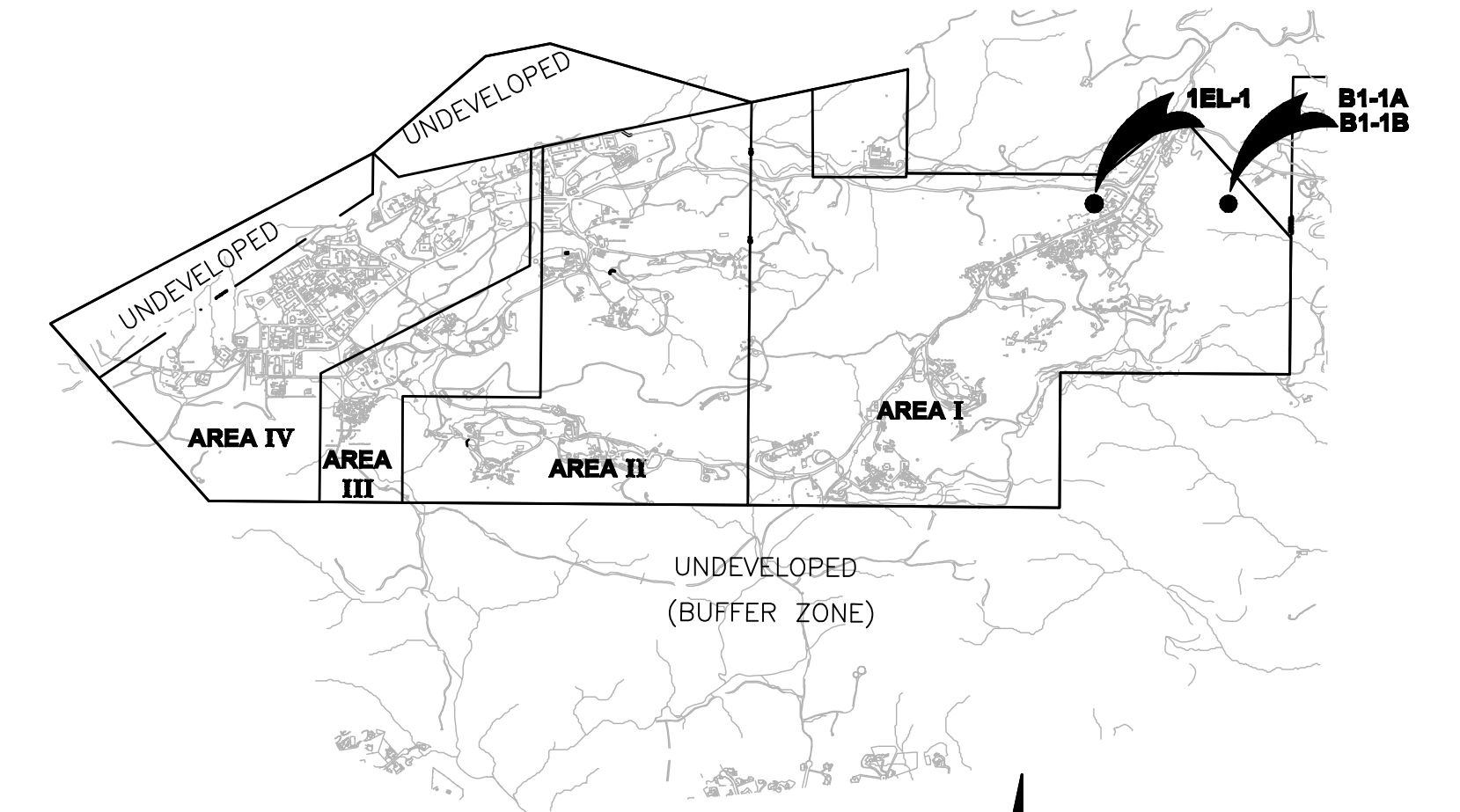
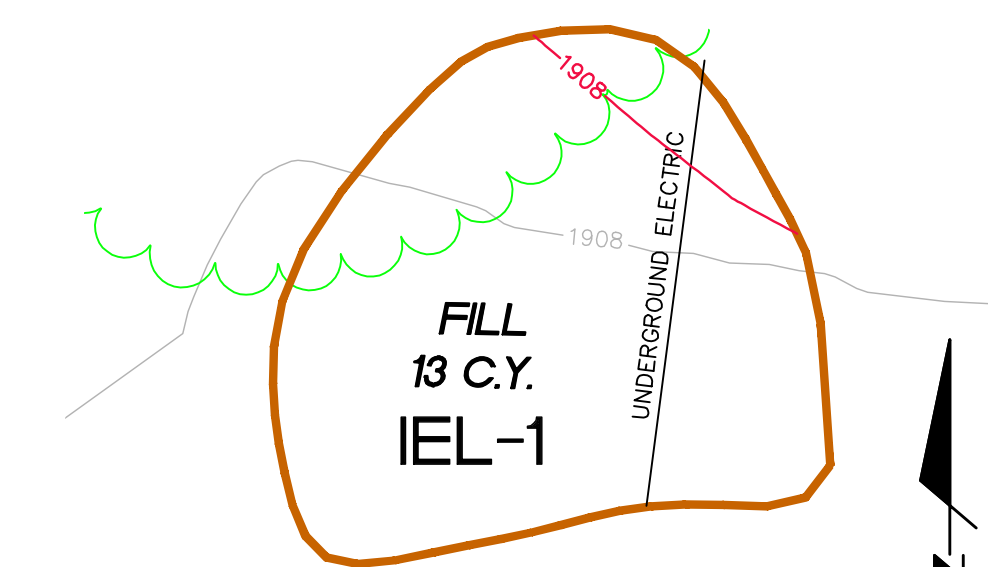
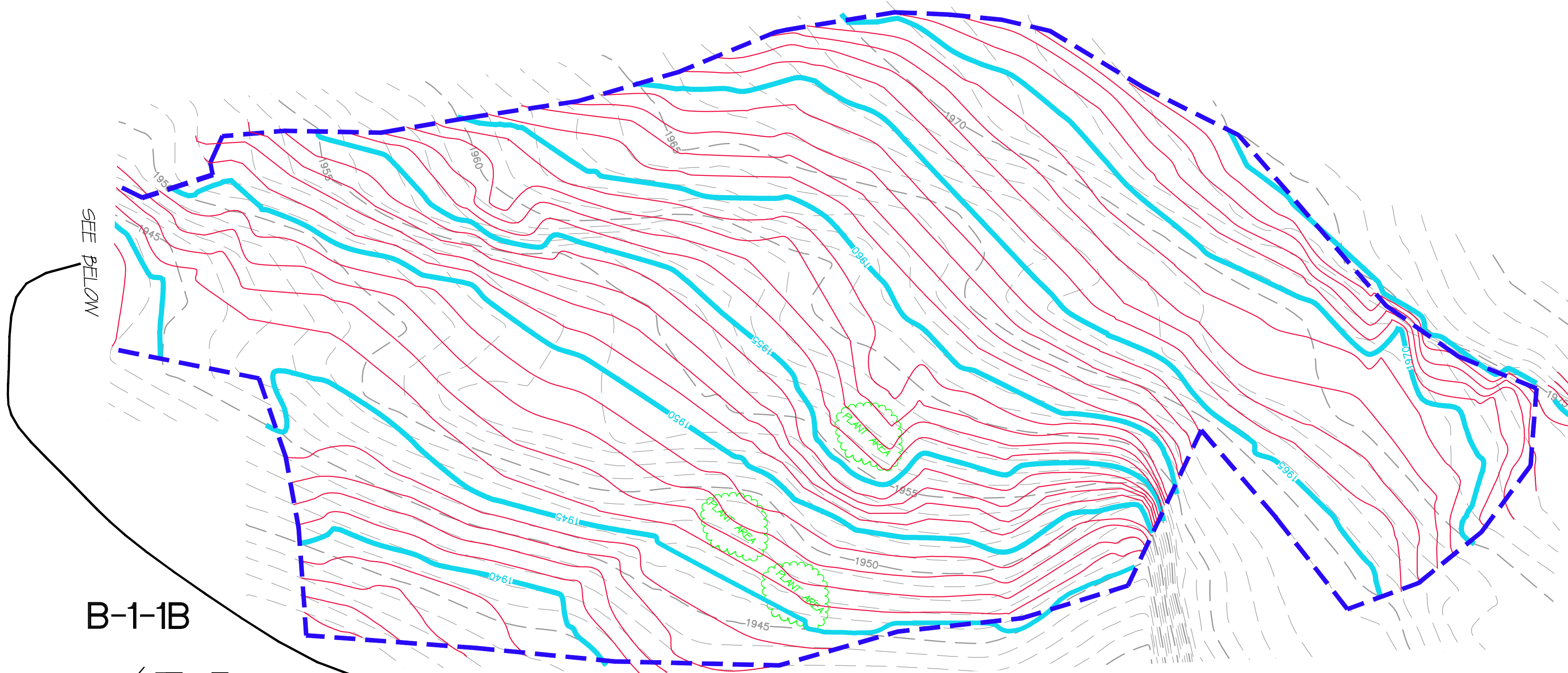
COORDINATES DERIVED FROM BOEING 1992 TOPOGRAPHIC MAP (NAD27 NAVD29 FEET):
 N 266917.4900
 E 1785312.1200
 ELEV 1811.13

PURPOSE: THE PURPOSE OF THIS DRAWING IS TO SHOW THE SOIL REMEDIATION AS OF OCTOBER 2010.

- NOTES: 1: AS BUILT SURFACE SURVEYED DECEMBER 1, 2010.
 2: VOLUMES CALCULATED USING AUTODESK LAND DESKTOP SOFTWARE.

LEGEND

- 5' CONTOURS (DECEMBER 2010)
- 1' CONTOURS (DECEMBER 2010)
- ROCK FORMATION
- 5' CONTOURS (JUNE 2010)
- 1' CONTOURS (JUNE 2010)
- EXCAVATION LIMITS



Robert E. Littell
 ROBERT E. LITTELL RCE 13395

REVISED: 02-23-2011 (MODIFIED CONTOURS)

 SAGE consultants, Inc. LAT 34°13'00" N LONG 119°02'40" W ELEV 55.438m Surveying • Application Development • GIS Integration • Engineering 1978 Ventura Blvd., CAMARILLO CA 93010-7847 Tel. (805) 482-6088 • Fax (805) 389-9815 www.sagecon.com	BOEING SSFL B1-1A, -1B, -1C, -1D IEL-1 AS-BUILT EXHIBIT	SHEET 1 OF 2
	5800 WOOLSEY CANYON ROAD CANOGA PARK, CA 91304-1148 COUNTY OF VENTURA STATE OF CALIFORNIA	