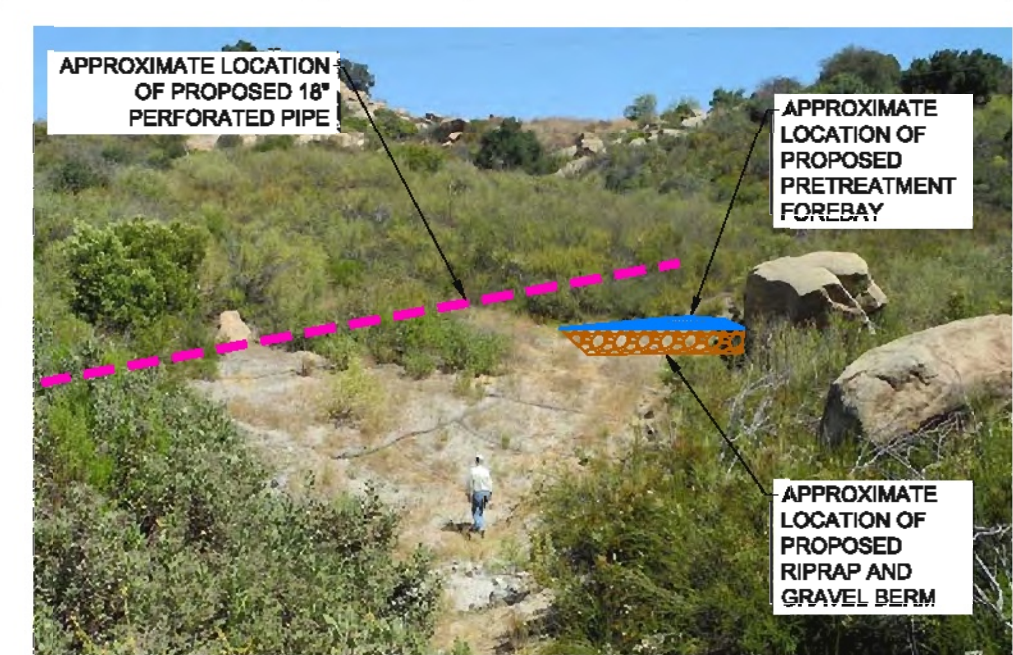
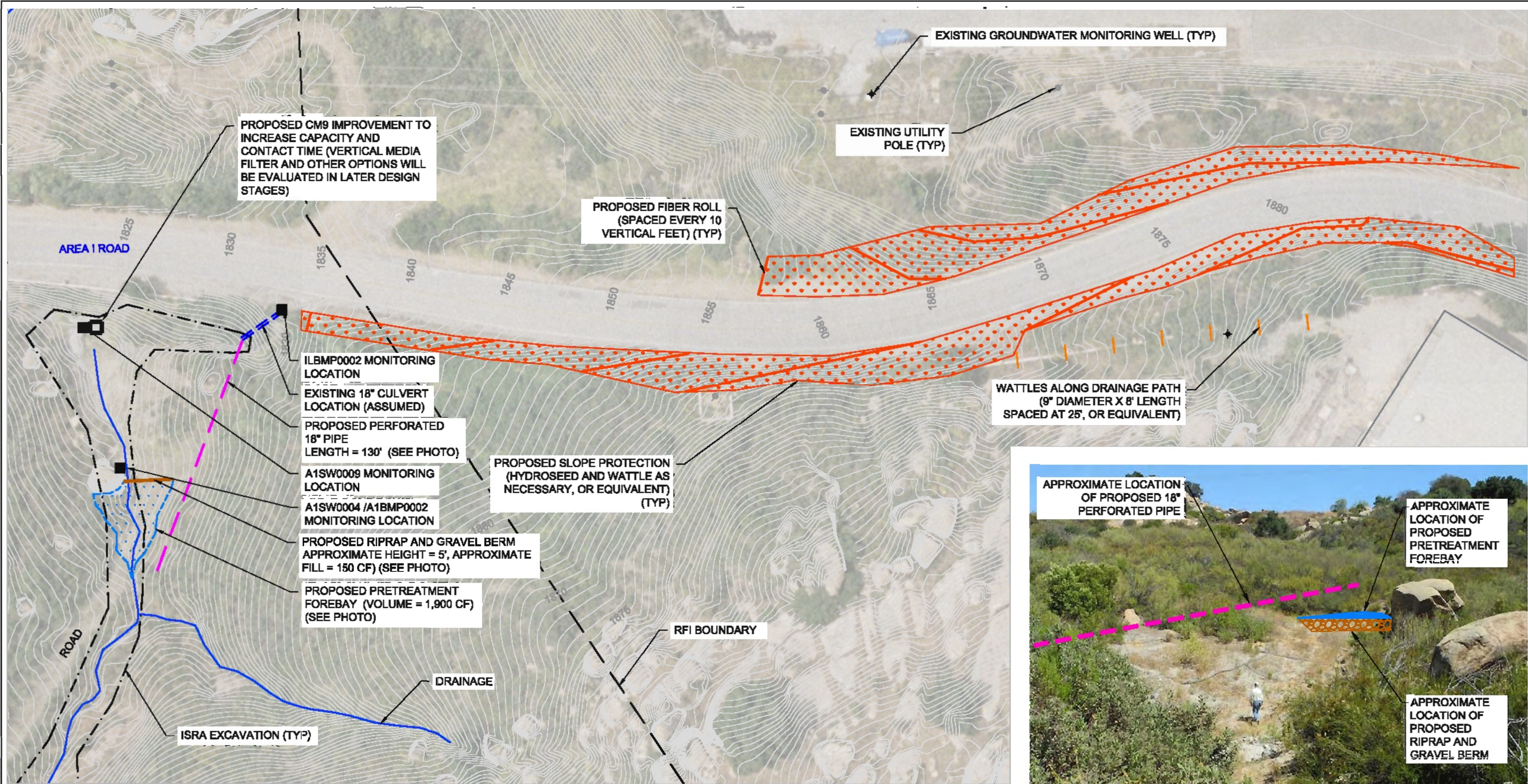


L:\PROJECT FOLDERS\BOEING\SB0363S BOEING STORMWATER 2012\CADD\CONCEPTUAL DESIGN\092512\SB0636S--1001 NASA CONCEPT BMP DESIGNS



CONCEPTUAL DESIGN

NOTE: PROPOSED DESIGN FEATURES WERE PRELIMINARILY SIZED AND ARE APPROXIMATE. FINAL BMP DESIGN DETAILS AND SIZES WILL BE CONFIRMED BASED ON SWMM MODEL AND ENGINEERING DESIGN ANALYSIS. FINAL DESIGNS WILL BE SUBJECT TO ENGINEERING FEASIBILITY ASSESSMENT, PERMITTING CONSTRAINTS (I.E., REGULATORY AGENCY REQUIREMENTS), AND EXPERT PANEL AND PROPERTY OWNER REVIEW AND APPROVAL.

APPROXIMATE LOCATION OF PROPOSED RIPRAP AND GRAVEL BERM, PRETREATMENT FOREBAY, AND 18\"/>

SITE PHOTO

NOT TO SCALE

TITLE: CM9 ROAD RUNOFF	PREPARED BY: Geosyntec consultants 924 ANACAPA STREET, SUITE 4A SANTA BARBARA, CA 93101 PHONE: 805.897.3800	PREPARED FOR: BOEING NASA SANTA SUSANA SITE VENTURA COUNTY, CALIFORNIA	PROJECT: STORMWATER BMP CONCEPT DESIGNS SANTA SUSANA SITE WATERSHED 009	DESIGNED BY: AQ	REVIEWED BY: DHB	DATE: SEPT 2012	DRAWING: 6
				DRAWN BY: AQ	APPROVED BY: BS	PROJ. NO.: SB0363S	