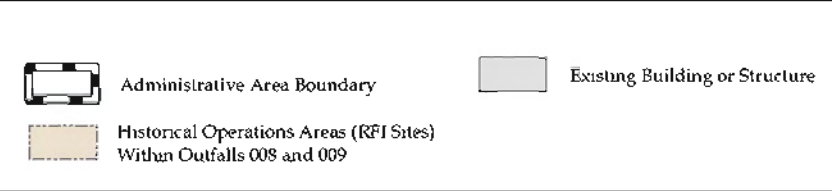
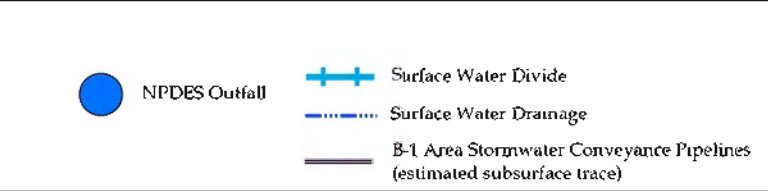
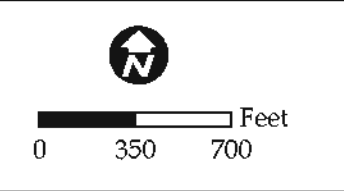
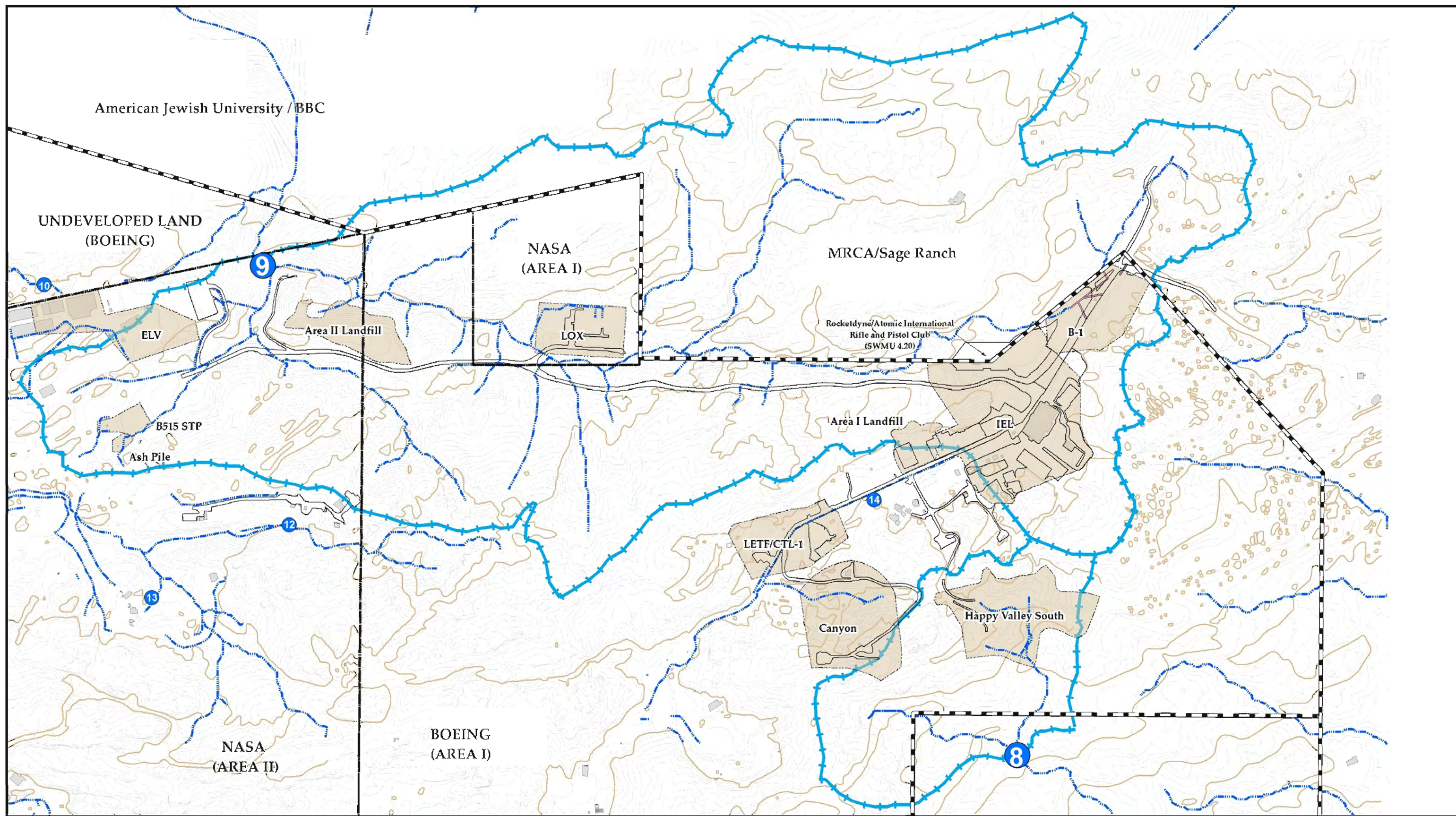



FIGURES



Outfalls 008 and 009 Location Map

Date: August 20, 2012
 File: \\uspa\inetapp\adm\rocketdync\gis\MasterGISFiles\ISRA_Projects\ISRA_MXD\BMP\CompliancePlanSept2010\OP3_9Location.mxd

 **FIGURE 1-1**

BMP Installations 2010-2013 Outfall 008 Watershed

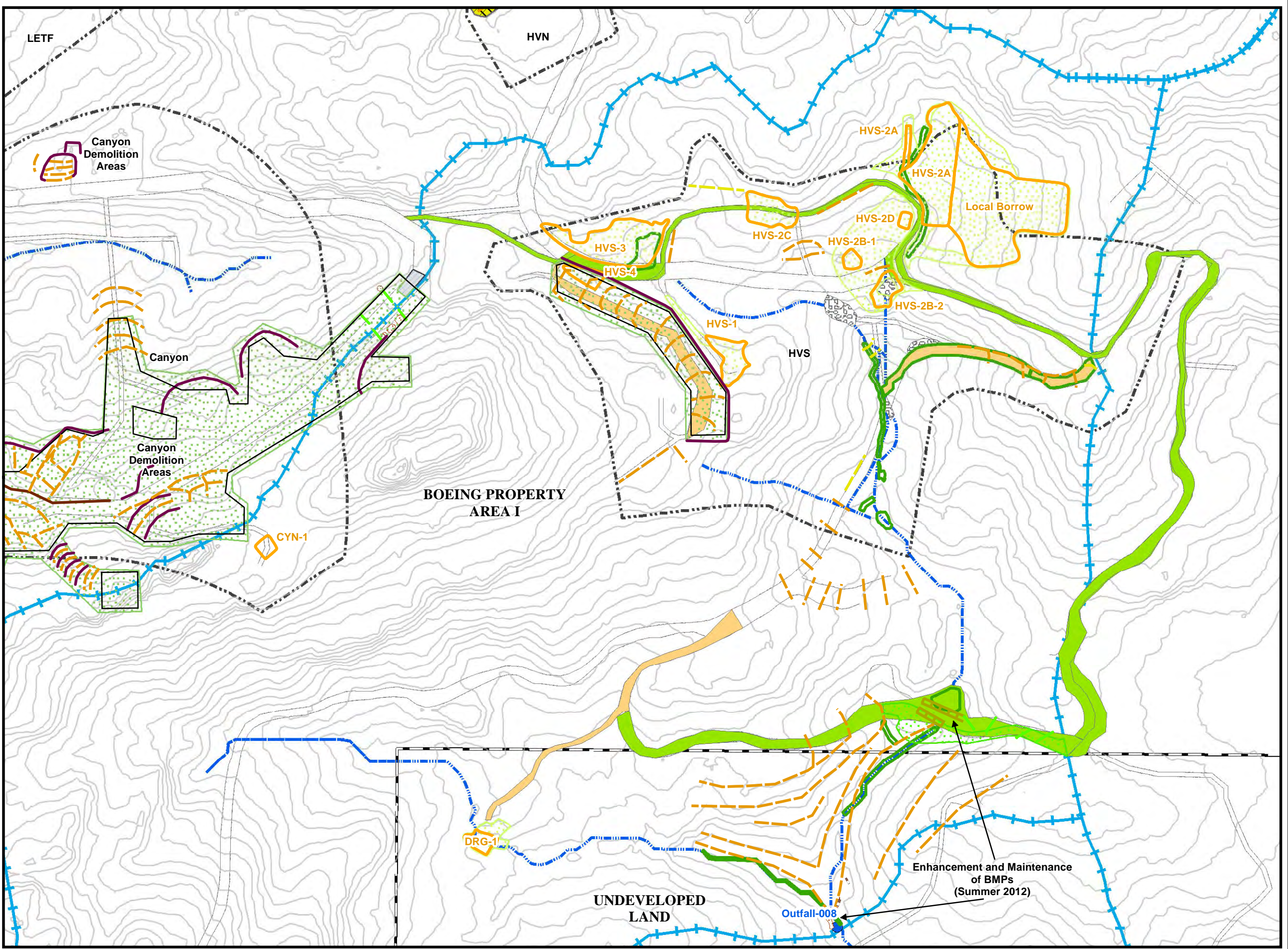
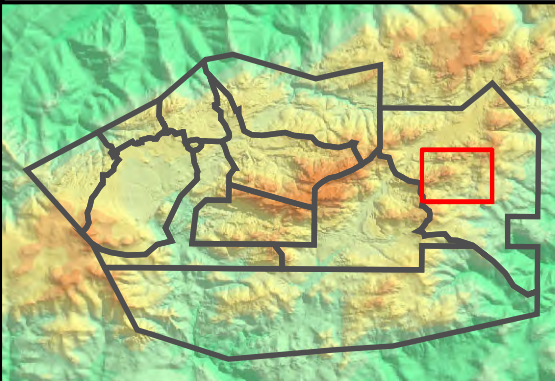
- Base Map Legend**
- Administrative Area Boundary
 - RFI Site Boundary
 - NPDES Outfall
 - Drainage
 - Surface Water Divide
 - A/C Paving
 - Dirt Road
 - Elevation Contour

- Data Legend**
- Actual ISRA Excavation Boundary
 - ISRA Area with Remediation in Progress
 - Planned ISRA Area Excavation
 - Former Planned ISRA Excavation Area
 - Abandoned Road
 - Jute Straw Mat
 - Rip Rap
 - Planting Area
 - Rock Crib Swale
 - Road Erosion Control Measures
 - Stabilized Entrance
 - Hydroseed 2012/2013
 - Hydroseed 2011/2012
 - Hydroseed 2010/2011
 - Check Dam
 - Fiber Rolls
 - Hay Straw Bales
 - Silt Fencing
 - Gravel Bag Berm
 - Soil Berm
 - Water Gravel Bars
 - Demolition Area

Figure Notes:
1. Topographic contours from 2010 Sage Consultants, Inc.

Path: T:\projects\rock3\USRA\Figures\Outfall-008\BMP-008_2013\BMP_008_2013.mxd
Date: 8/14/2013

1 inch = 175 feet
0 175 350 Feet



SANTA SUSANA FIELD LABORATORY

FIGURE 1-2

BMP Installations 2010-2013

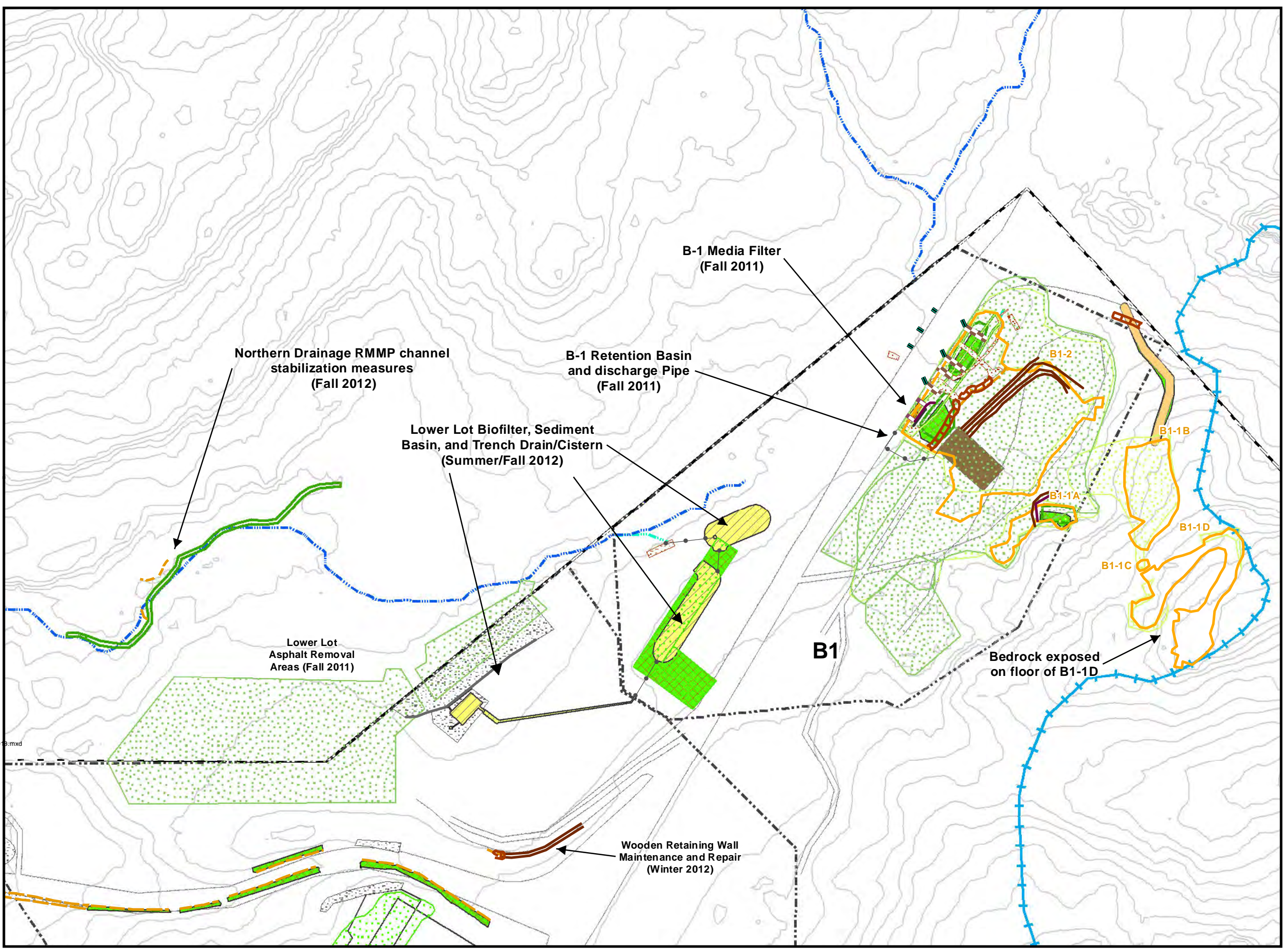
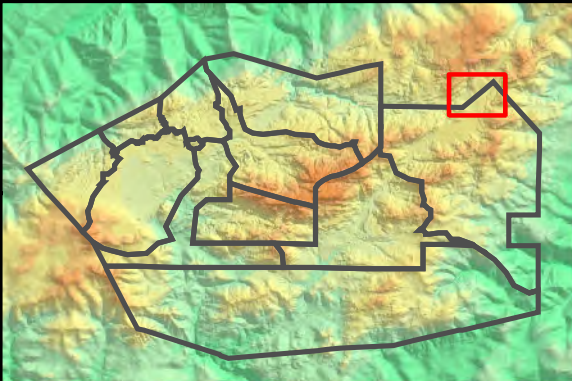
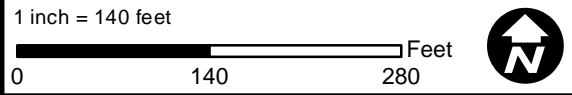
B-1 Outfall 009 Watershed

- Base Map Legend**
- Administrative Area Boundary
 - RFI Site Boundary
 - NPDES Outfall
 - Non Jurisdictional Surface Water Pathway
 - Drainage
 - Surface Water Divide
 - A/C Paving
 - Dirt Road
 - Elevation Contour

- Data Legend**
- Actual ISRA Excavation Boundary
 - ISRA Area with Remediation in Progress
 - Planned ISRA Area Excavation
 - Former Planned ISRA Excavation Area
 - Media Filters
 - Retention Basin
 - Engineered Natural Treatment System
 - Abandoned Road
 - Demolition Area
 - Erosion Control Fabric
 - Rip Rap
 - Gravel
 - Planting Area
 - Hydroseed 2012/2013
 - Hydroseed 2011/2012
 - Hydroseed 2010/2011
 - Concrete Curb
 - Conveyance Pipeline
 - Curb Cut
 - Check Dam
 - Gabion
 - Fiber Rolls
 - Silt Fencing
 - Sandbags
 - Soil Berm
 - Wooden Retaining Wall
 - Culvert Maintenance Headwall

- Figure Notes:**
- Topographic contours from 2010 Sage Consultants, Inc.
 - Covered the weir boards at CM-1, CM-2, CM-3, CM-4, CM-6, CM-8, CM-9, and CM-10 with filter fabric to facilitate ponding behind the boards and increase flow through filter media beds (Fall 2011).

Path: \\SD-004\gisl\projects\rock3\USRA\Figures\Outfall-009\BMP-009_2013\Fig1-3_BMP_B-1_2013.mxd
Date: 8/28/2013



SANTA SUSANA FIELD LABORATORY

FIGURE 1-3

BMP Installations 2010-2013
AILF and IEL Outfall 009 Watershed

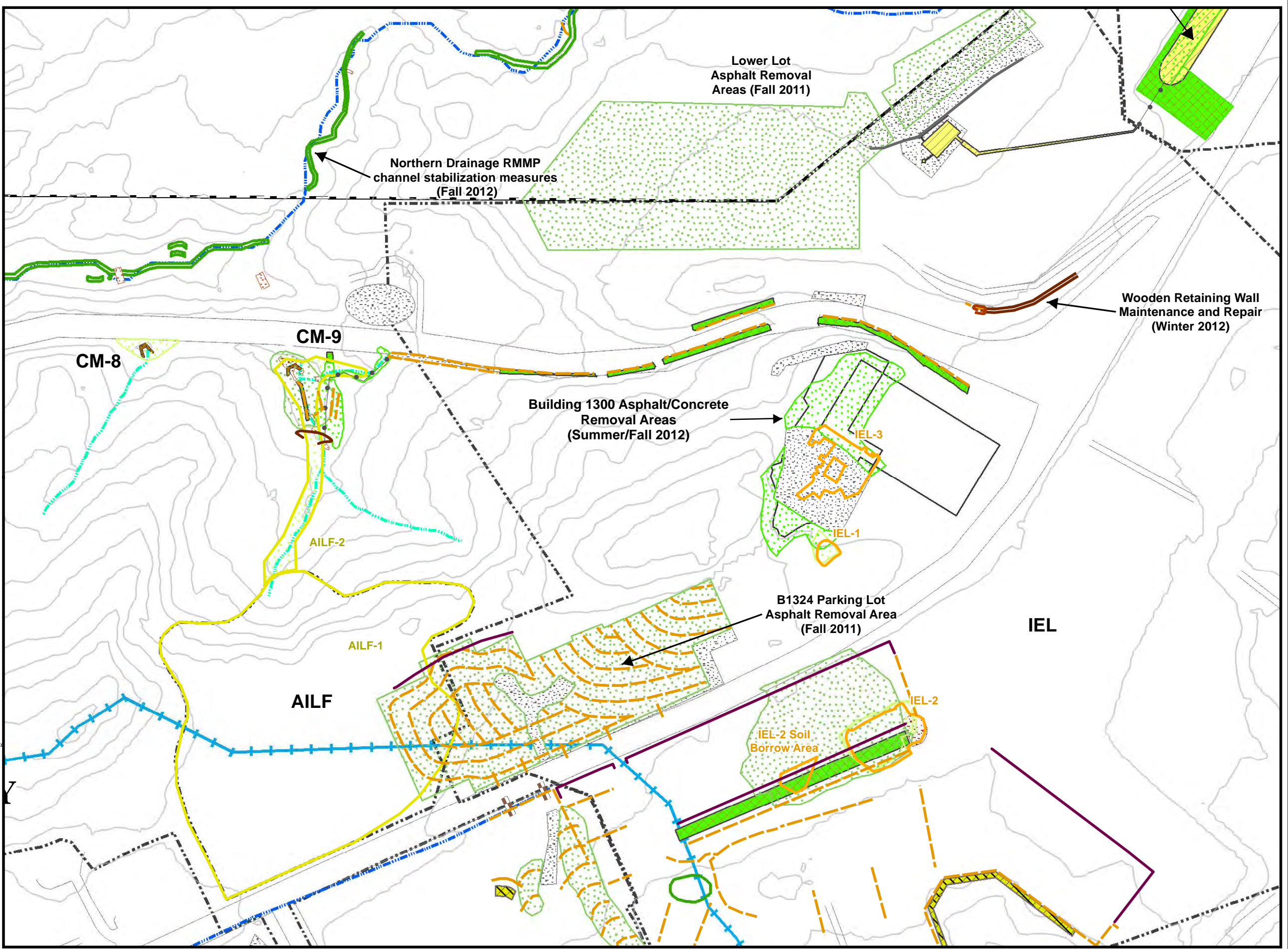
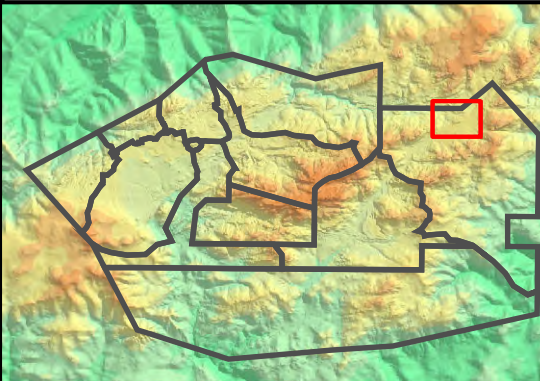
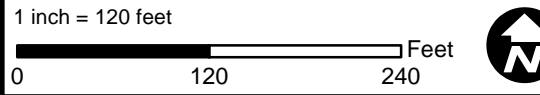
- Base Map Legend**
- Administrative Area Boundary
 - RFI Site Boundary
 - NPDES Outfall
 - Non Jurisdictional Surface Water Pathway
 - Drainage
 - Surface Water Divide
 - A/C Paving
 - Dirt Road
 - Elevation Contour

- Data Legend**
- Actual ISRA Excavation Boundary
 - ISRA Area with Remediation in Progress
 - Planned ISRA Area Excavation
 - Former Planned ISRA Excavation Area
 - Culvert Maintenance (CM)
 - Engineered Natural Treatment System
 - Demolition Area
 - Erosion Control Fabric
 - Jute Straw Mat
 - Rip Rap
 - Gravel
 - Planting Area
 - Hydroseed 2012/2013
 - Hydroseed 2011/2012
 - Hydroseed 2010/2011
 - Concrete Curb
 - Conveyance Pipeline
 - Check Dam
 - Fiber Rolls
 - Silt Fencing
 - Sandbags
 - Soil Berm
 - Wooden Retaining Wall

Figure Notes:

1. Topographic contours from 2010 Sage Consultants, Inc.
2. Covered the weir boards at CM-1, CM-2, CM-3, CM-4, CM-6, CM-8, CM-9, and CM-10 with filter fabric to facilitate ponding behind the boards and increase flow through filter

Path: T:\projects\rock3\ISRA\Figures\Outfall-009\BMP-009 2013\Fig1-4_BMP_AILF_IEL_2013.txd
 Date: 8/14/2013



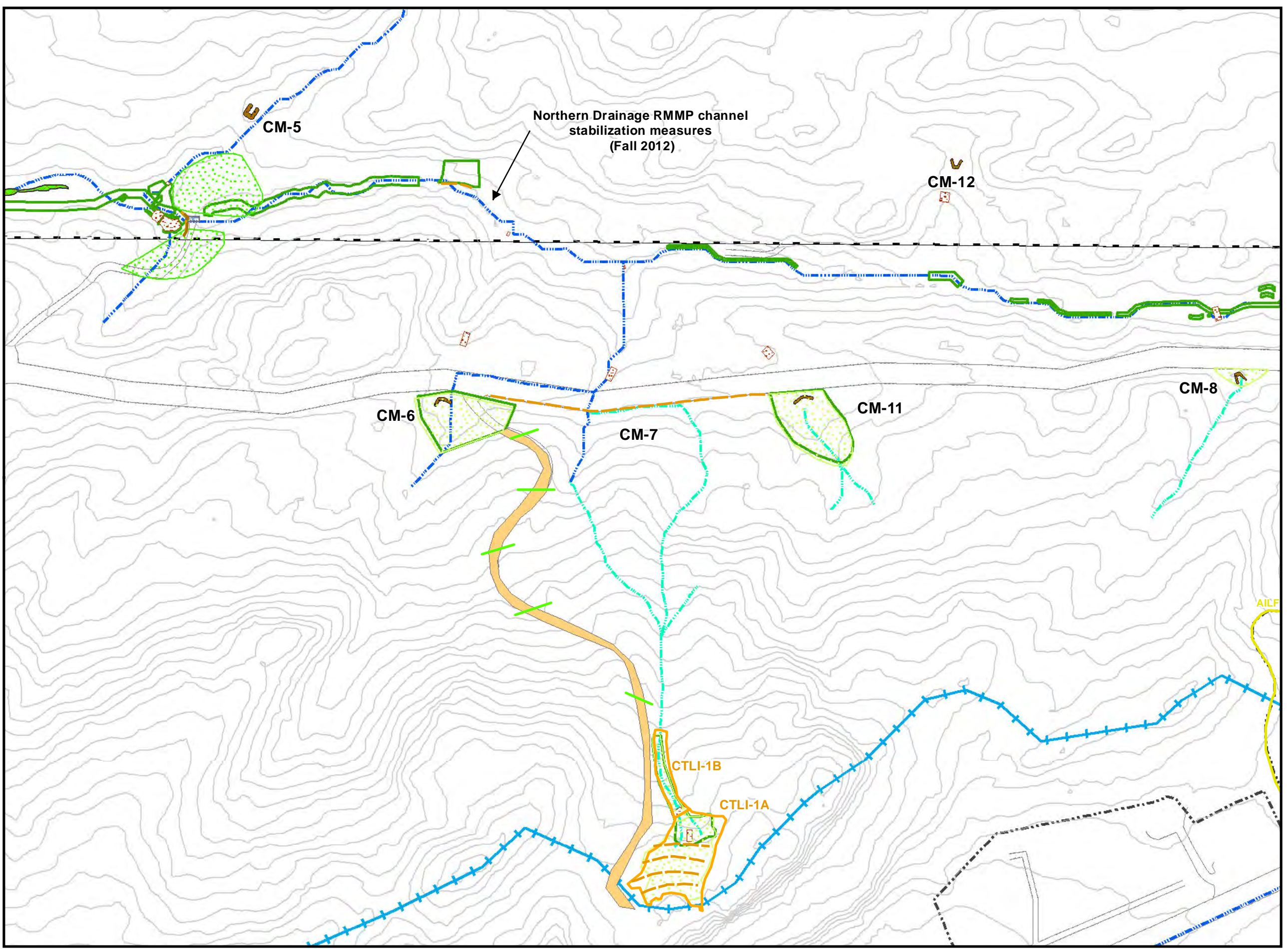
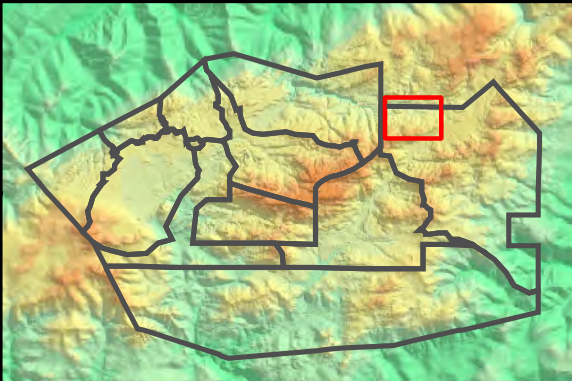
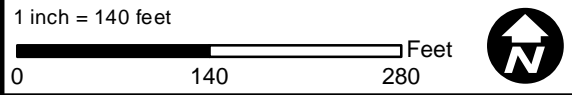
**BMP Installations 2010-2013
CTL1 Outfall 009 Watershed**

- Base Map Legend**
- Administrative Area Boundary
 - RFI Site Boundary
 - NPDES Outfall
 - Non Jurisdictional Surface Water Pathway
 - Drainage
 - Surface Water Divide
 - A/C Paving
 - Dirt Road
 - Elevation Contour

- Data Legend**
- Actual ISRA Excavation Boundary
 - ISRA Area with Remediation in Progress
 - Planned ISRA Area Excavation
 - Former Planned ISRA Excavation Area
 - Culvert Maintenance (CM)
 - Box Culvert
 - Abandoned Road
 - Erosion Control Fabric
 - Rip Rap
 - Planting Area
 - Hydroseed 2012/2013
 - Hydroseed 2010/2011
 - Gabion
 - Fiber Schine
 - Fiber Rolls
 - Water Gravel Bars

- Figure Notes:**
1. Topographic contours from 2010 Sage Consultants, Inc.
 2. Covered the weir boards at CM-1, CM-2, CM-3, CM-4, CM-6, CM-8, CM-9, and CM-10 with filter fabric to facilitate ponding behind the boards and increase flow through filter media beds (Fall 2011).

Path: \\SD-004\gis\projects\rock3\ISRA\Figures\Outfall-009\BMP-009_2013\Fig1-5_BMP_CTL1_2013.mxd
Date: 8/28/2013



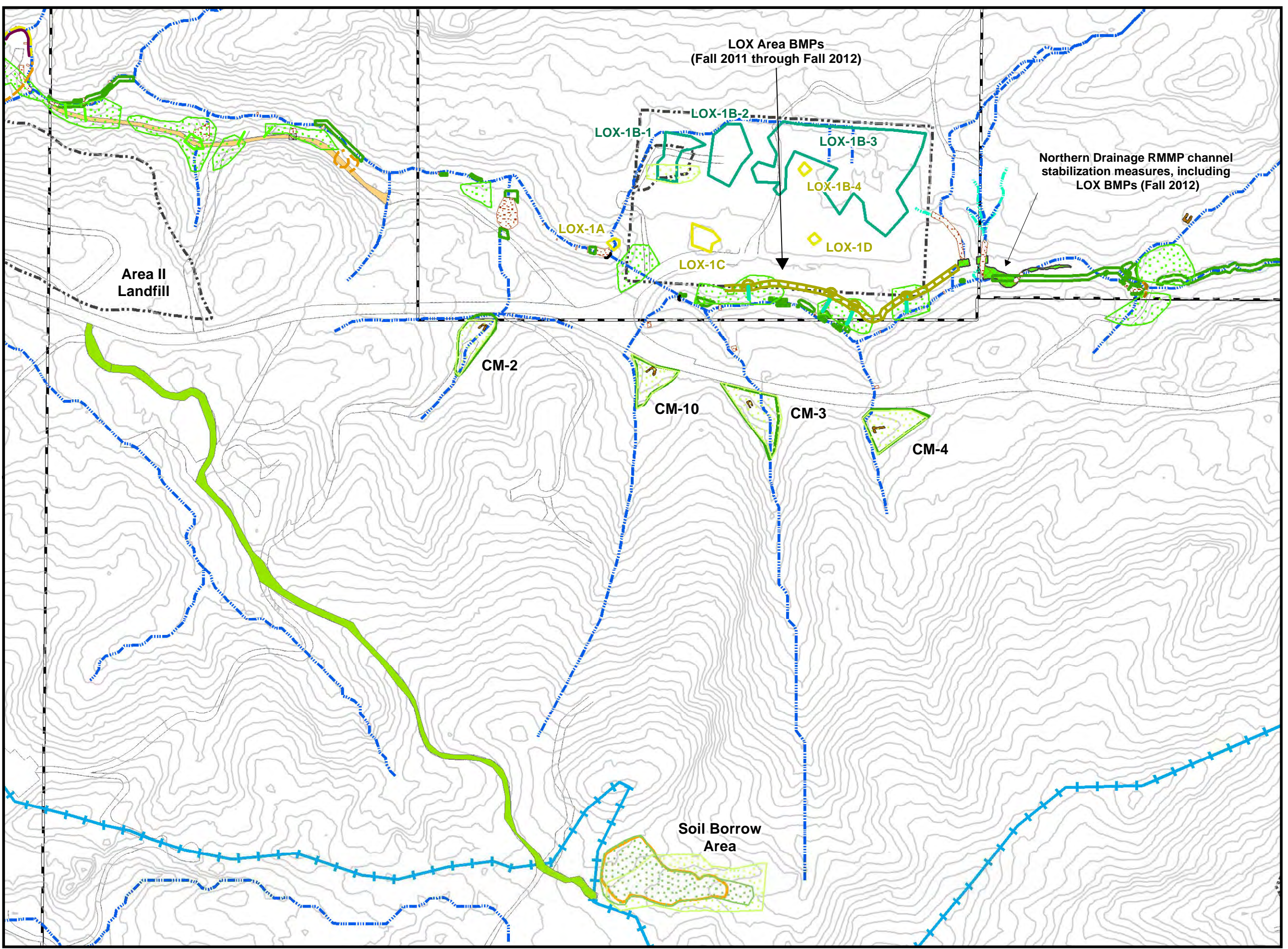
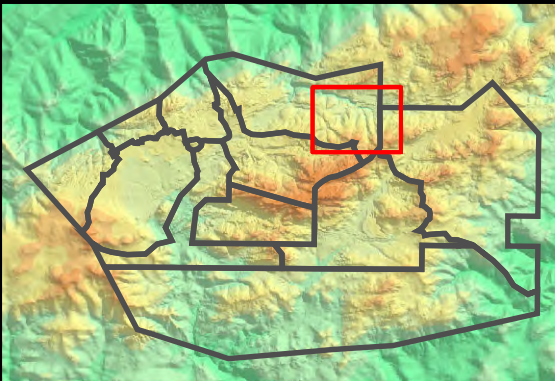
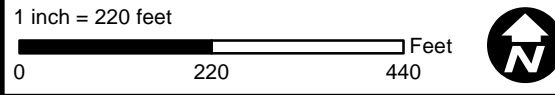
BMP Installations 2010-2013 LOX Outfall 009 Watershed

- Base Map Legend**
- Administrative Area Boundary
 - RFI Site Boundary
 - NPDES Outfall
 - Drainage
 - Non Jurisdictional Surface Water Pathway
 - Surface Water Divide
 - A/C Paving
 - Dirt Road
 - Elevation Contour
- Data Legend**
- Actual ISRA Excavation Boundary
 - ISRA Area with Remediation in Progress
 - Planned ISRA Area Excavation
 - Former Planned ISRA Excavation Area
 - Hydroseed 2012/2013
 - Hydroseed 2011/2012
 - Hydroseed 2010/2011
 - Culvert Maintenance (CM)
 - Abandoned Road
 - Erosion Control Fabric
 - Rip Rap
 - Geo Cell
 - Planting Area
 - Road Erosion Control Measures
 - Gabion
 - Fiber Schine
 - Fiber Rolls
 - Hay Straw Bales
 - Silt Fencing
 - Gravel Bag Berm
 - Rolling Dips
 - Slope Drain
 - Water Gravel Bars
 - Storm Drain Headwall

Figure Notes:

- Topographic contours from 2010 Sage Consultants, Inc.
- Covered the weir boards at CM-1, CM-2, CM-3, CM-4, CM-6, CM-8, CM-9, and CM-10 with filter fabric to facilitate ponding behind the boards and increase flow through filter media beds (Fall 2011).

Path: T:\projects\rock3\ISRA\Figures\Outfall-009\BMP-009 2013\Fig1-6_BMP_LOX_2013.mxd
Date: 8/14/2013



BMP Installations 2010-2013 A2LF Outfall 009 Watershed

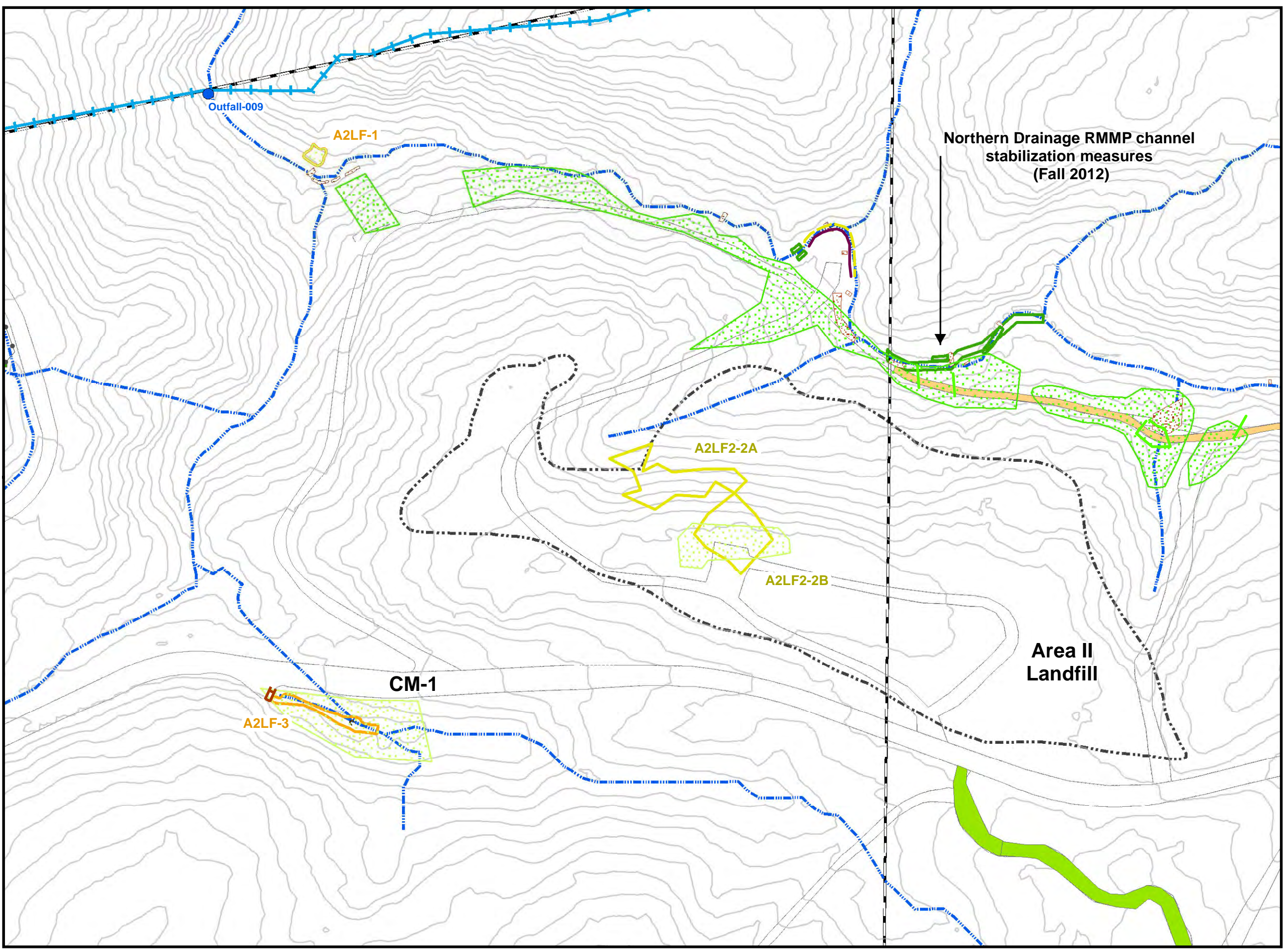
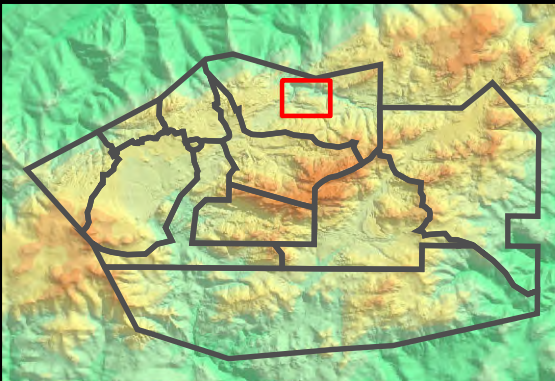
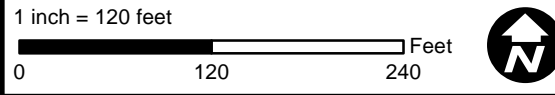
- Base Map Legend**
- Administrative Area Boundary
 - RFI Site Boundary
 - NPDES Outfall
 - Drainage
 - Non Jurisdictional Surface Water Pathway
 - Surface Water Divide
 - A/C Paving
 - Dirt Road
 - Elevation Contour

- Data Legend**
- Actual ISRA Excavation Boundary
 - ISRA Area with Remediation in Progress
 - Planned ISRA Area Excavation
 - Former Planned ISRA Excavation Area
 - Hydroseed 2012/2013
 - Hydroseed 2010/2011
 - Culvert Maintenance (CM)
 - Abandoned Road
 - Rip Rap
 - Planting Area
 - Pump
 - Road Erosion Control Measures
 - Conveyance Pipeline
 - Fiber Rolls
 - Hay Straw Bales
 - Silt Fencing
 - Sandbags
 - Water Gravel Bars

Figure Notes:

- Topographic contours from 2010 Sage Consultants, Inc.
- Covered the weir boards at CM-1, CM-2, CM-3, CM-4, CM-6, CM-8, CM-9, and CM-10 with filter fabric to facilitate ponding behind the boards and increase flow through filter media beds (Fall 2011).

Path: T:\projects\rock3\ISRA\Figures\Outfall-009\BMP-009 2013\Fig1-7_BMP_A2LF_2013.mxd
Date: 8/14/2013



SANTA SUSANA FIELD LABORATORY

FIGURE 1-7

BMP Installations 2010-2013 AP/STP Outfall 009 Watershed

- Base Map Legend**
- Administrative Area Boundary
 - RFI Site Boundary
 - NPDES Outfall
 - Drainage
 - Non Jurisdictional Surface Water Pathway
 - Surface Water Divide
 - A/C Paving
 - Dirt Road
 - Elevation Contour

- Data Legend**
- Actual ISRA Excavation Boundary
 - ISRA Area with Remediation in Progress
 - Planned ISRA Area Excavation
 - Former Planned ISRA Excavation Area
 - Hydroseed 2012/2013
 - Hydroseed 2011/2012
 - Hydroseed 2010/2011
 - Culvert Maintenance (CM)
 - Media Filters
 - Retention Basin
 - Erosion Control Fabric
 - Rip Rap
 - Pump
 - Storage Tank
 - Conveyance Pipeline
 - Fiber Rolls
 - Silt Fencing
 - Gravel Bag Berm
 - Sandbags
 - Pipeline
 - Percolation Hole

Figure Notes:

- Topographic contours from 2010 Sage Consultants, Inc
- Covered the weir boards at CM-1, CM-2, CM-3, CM-4, CM-6, CM-8, CM-9, and CM-10 with filter fabric to facilitate ponding behind the boards and increase flow through filter media beds (Fall 2011).

Path: \\SD-004\gisp\projects\rock3\ISRA\Figures\Outfall-009\BMP-009_2013\Fig1-8_BMP_APSTP_2013.mxd
Date: 8/28/2013

