

BMP Installations 2010-2015

A2LF Area

Outfall 009 Watershed

Base Map Legend

- Administrative Area Boundary
- RFI Site Boundary
- NPDES Outfall
- Drainage
- Non Jurisdictional Surface Water Pathway
- Surface Water Divide
- A/C Paving
- Dirt Road
- Elevation Contour

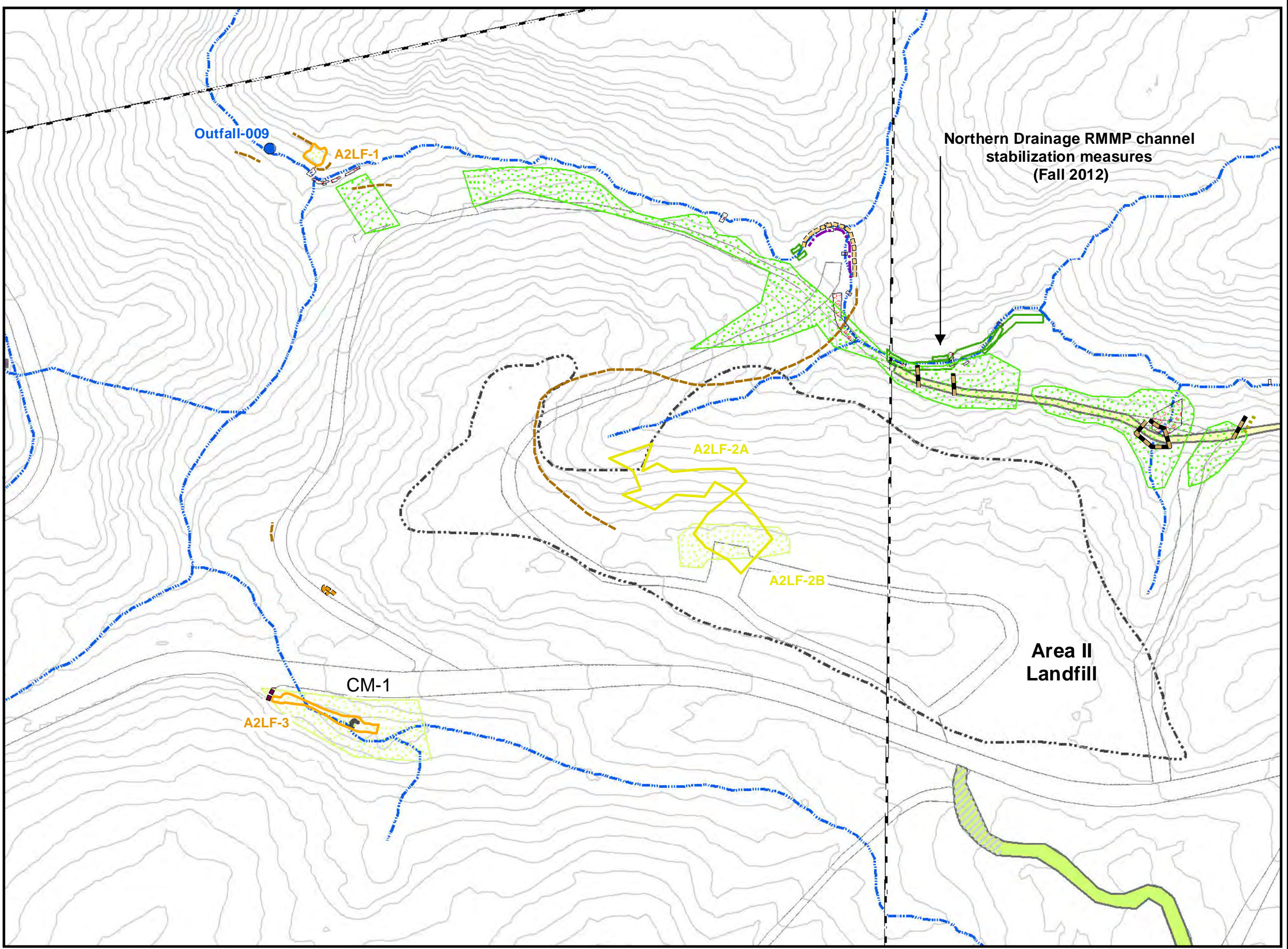
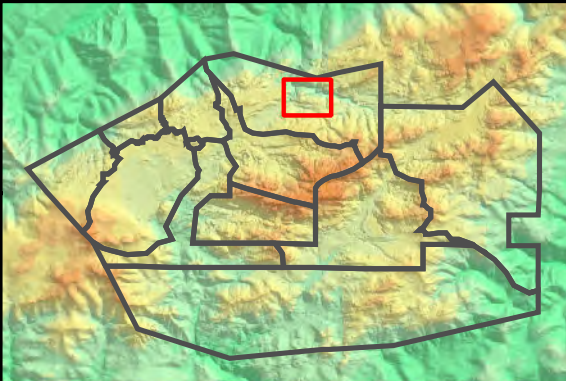
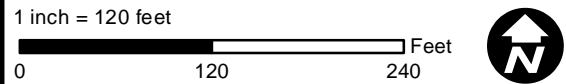
Data Legend

- Actual ISRA Excavation Boundary
- Former Planned ISRA Area Boundary
- Hydroseed 2012/2013
- Hydroseed 2010/2011
- Abandoned Road
- Road Erosion
- Planting Area
- Road Rehab Restoration
- CM
- Rip Rap
- Pump
- Covered Sandbags
- Hay Straw Bales
- FiberRolls
- Pipeline
- Rolling Dips
- Sandbags
- Silt Fencing
- Water Gravel Bars

Figure Notes:

1. Topographic contours from 2010 Sage Consultants, Inc.
2. Covered the weir boards at CM-1, CM-2, CM-3, CM-4, CM-6, CM-8, CM-9, and CM-10 with filter fabric to facilitate ponding behind the boards and increase flow through filter media beds (Fall 2011).

Path: \\SD-004\gsp\projects\rock3\ISRA\Figures\PerfMon\2014-2015 Rainy Season\BMP\Fig1-8_BMP_A2LF.mxd Date: 7/28/2015



**BMP Installations 2010-2015
AP/STP and ELV Areas
Outfall 009 Watershed**

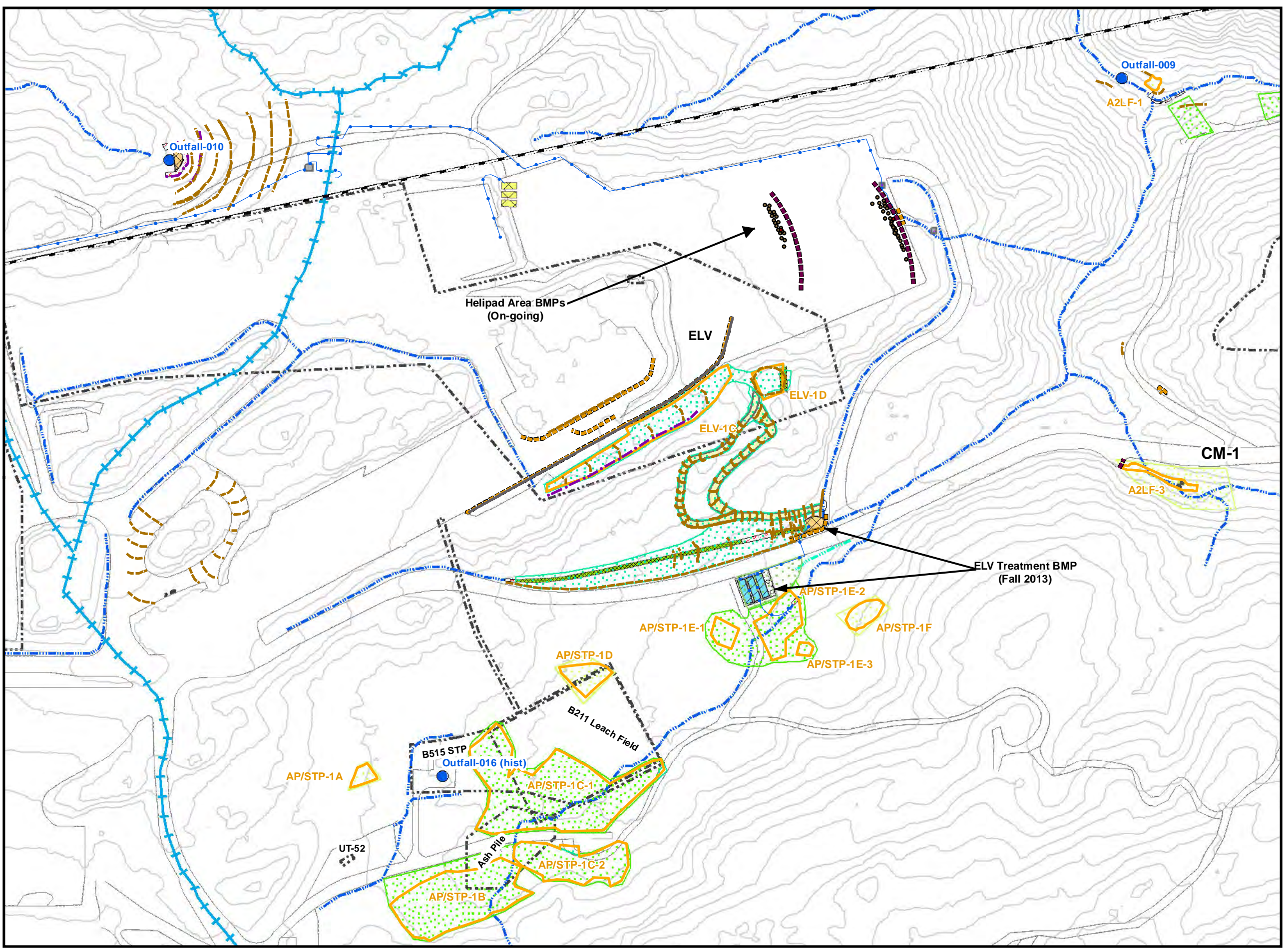
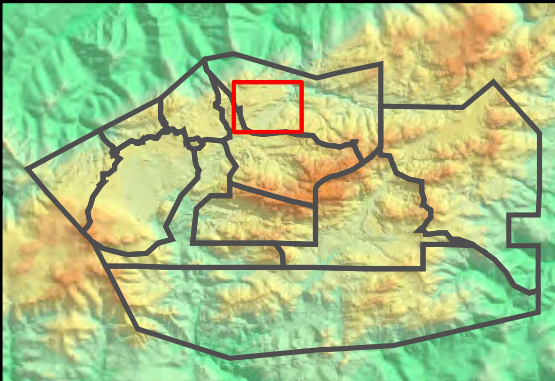
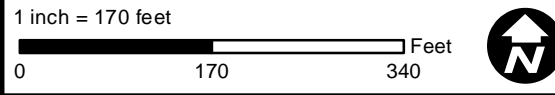
- Base Map Legend**
- Administrative Area Boundary
 - Surface Water Divide
 - RFI Site Boundary
 - NPDES Outfall
 - Drainage
 - Non Jurisdictional Surface Water Pathway
 - A/C Paving
 - Dirt Road
 - Elevation Contour

- Data Legend**
- Actual ISRA Excavation Boundary
 - Former Planned ISRA Area Boundary
 - Hydroseed 2013/2014
 - Hydroseed 2012/2013
 - Hydroseed 2011/2012
 - Hydroseed 2010/2011
 - Rip Rap
 - Retention Sediment Basins
 - CM
 - Jute Straw Mat
 - Abandoned Road
 - Gravel
 - BMP Tank
 - Wet Well Pump
 - Pump
 - Mobile Stormwater Storage Tank
 - Covered Sandbags
 - Fiber Rolls
 - Gravel Bag Berm
 - Pipeline
 - Sandbags
 - Silt Fencing
 - Concrete Curb
 - Berm Drains
 - Percolation Hole

Figure Notes:

1. Topographic contours from 2010 Sage Consultants, Inc
2. Covered the weir boards at CM-1, CM-2, CM-3, CM-4, CM-6, CM-8, CM-9, and CM-10 with filter fabric to facilitate ponding behind the boards and increase flow through filter media beds (Fall 2011).

Path: \\SD-004\gsr\projects\rock3\ISRA\Figures\PerMon\2014-2015 Rainy Season\BMP\Fig 1-9_BMP_APSTP.mxd
Date: 7/29/2015



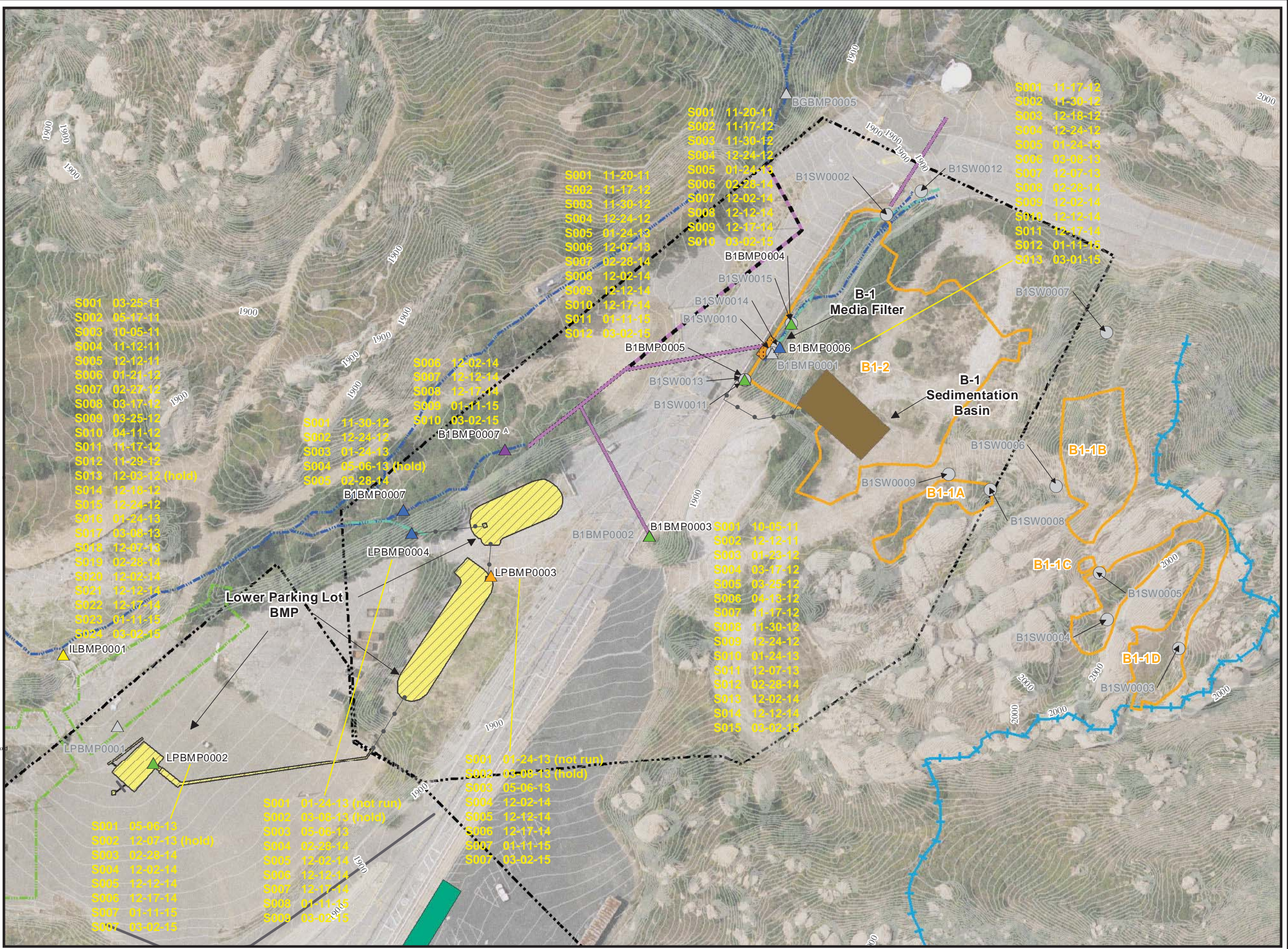
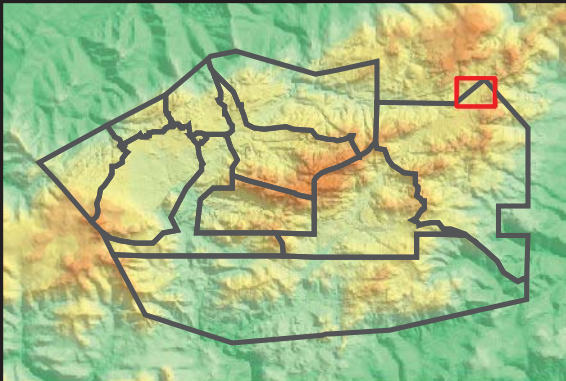
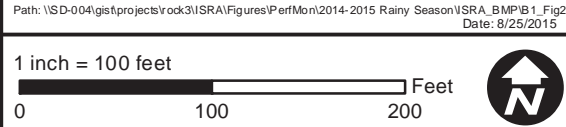
Outfall 009 BMP and Performance Monitoring Locations, B-1 and Lower Parking Lot Areas - Boeing

- ### Base Map Legend
- Administrative Area Boundary
 - RFI Site Boundary
 - Drainage
 - Non Jurisdictional Surface Water Pathway
 - Surface Water Divide

- ### Figure Legend
- Discontinued ISRA Performance Monitoring Location
 - Alternate BMP Performance Monitoring Location
 - Potential BMP Subarea Monitoring Location
 - Downstream BMP Performance Monitoring Location
 - Upstream BMP Performance Monitoring Location
 - Mid-Point BMP Performance Monitoring Location
 - Discontinued Potential BMP Subarea Monitoring Location
 - Actual ISRA Excavation Boundary
 - Asphalt/Concrete Removal Area
 - Media Filters
 - Sedimentation Basin
 - Engineered Natural Treatment System
 - Storm Drain (estimated subsurface trace)
 - Storm Drain inferred
 - Concrete Curb
 - Conveyance Pipeline
 - Detention Bioswale

Note:

- Aerial imagery from 2010 Sage Consulting.
- Topographic contours from 2010 Sage Consulting.
- Rationale for discontinuing monitoring at previous sample locations can be found in the text and/or tables of the 2010/2011, 2011/2012, 2012/2013, 2013/2014, and 2014/2015 Rainy Season Sampling and Analysis Plan.
- Alternate location B1BMP0007A was sampled starting during the 2014/2015 rainy season due to overflow from the Biofilter which occurred upstream of the original B1BMP0007 location



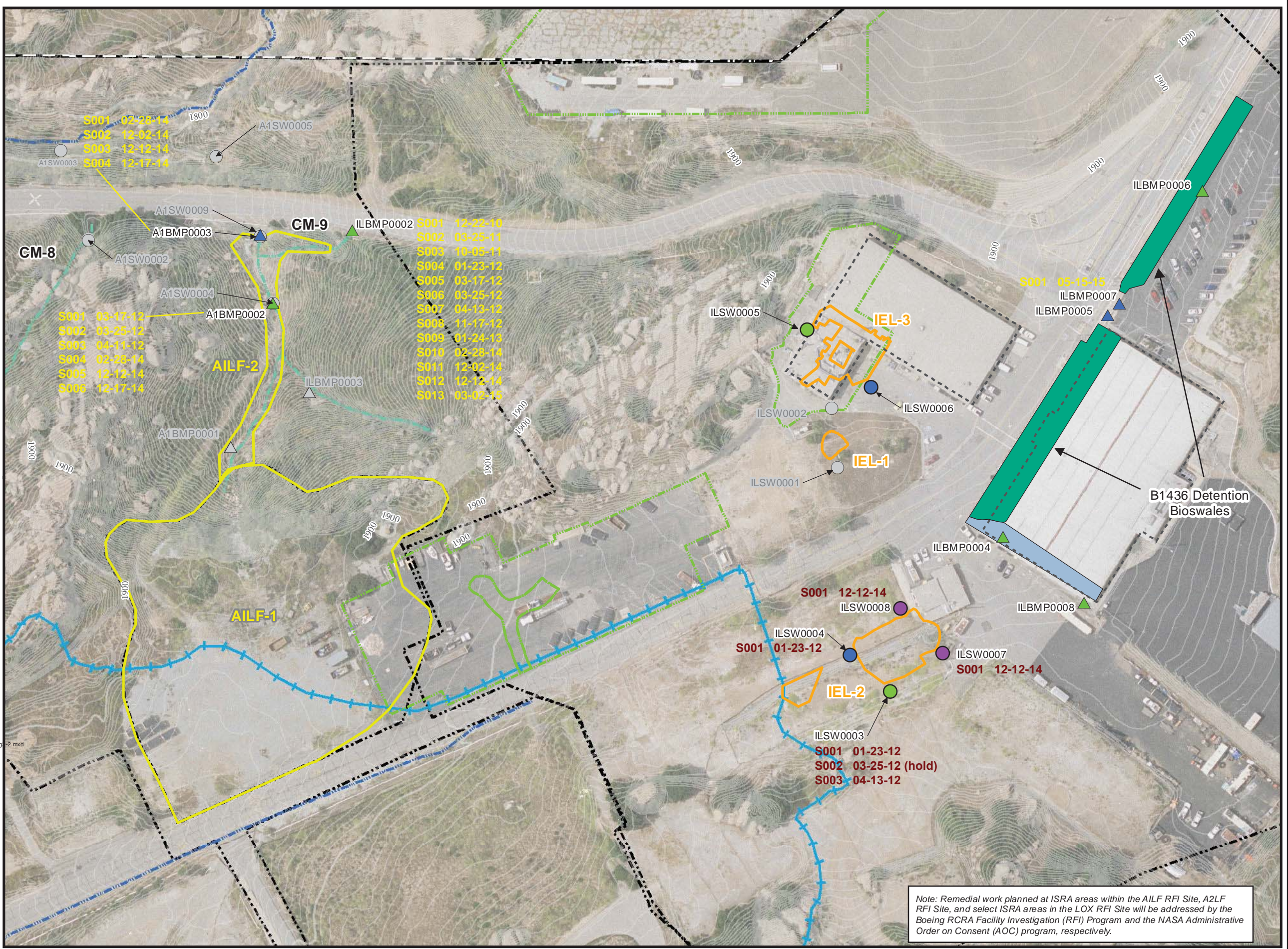
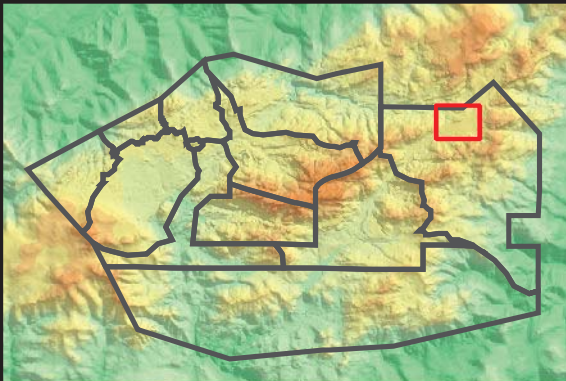
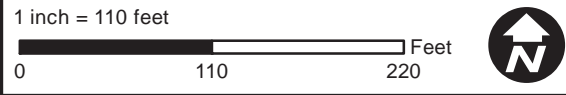
Outfall 009 BMP and Performance Monitoring Locations AILF and IEL Areas - Boeing

- Base Map Legend**
- Administrative Area Boundary
 - Non Jurisdictional Surface Water Pathway
 - RFI Site Boundary
 - Surface Water Divide
 - Drainage

- Figure Legend**
- Primary Downstream ISRA Performance Monitoring Location
 - Alternate ISRA Performance Monitoring Location
 - Upstream ISRA Performance Monitoring Location
 - Discontinued ISRA Performance Monitoring Location
 - Downstream BMP Performance Monitoring Location
 - Upstream BMP Performance Monitoring Location
 - Discontinued Potential BMP Subarea Monitoring Location
 - Actual ISRA Excavation Boundary
 - Former Planned ISRA Area Boundary
 - Asphalt/Concrete Removal Area
 - Demolition Area
 - Detention Bioswale
 - Rock Crib Swale

Note:
 1. Aerial imagery from 2010 Sage Consulting.
 2. Topographic contours from 2010 Sage Consulting.
 3. Rationale for discontinuing monitoring at previous sample locations can be found in the text and/or tables of the 2010/2011, 2011/2012, 2012/2013, 2013/2014, and 2014/2015 Rainy Season Sampling and Analysis Plan.

Path: \\SD-004\gist\projects\rock3\ISRA\Figures\PerfMon\2014-2015 Rainy Season\ISRA_BMP\AILF_IEL1_Fig-2.mxd
 Date: 7/13/2015



Note: Remedial work planned at ISRA areas within the AILF RFI Site, A2LF RFI Site, and select ISRA areas in the LOX RFI Site will be addressed by the Boeing RCRA Facility Investigation (RFI) Program and the NASA Administrative Order on Consent (AOC) program, respectively.



Outfall 009 BMP and Performance Monitoring Locations LOX Area - NASA

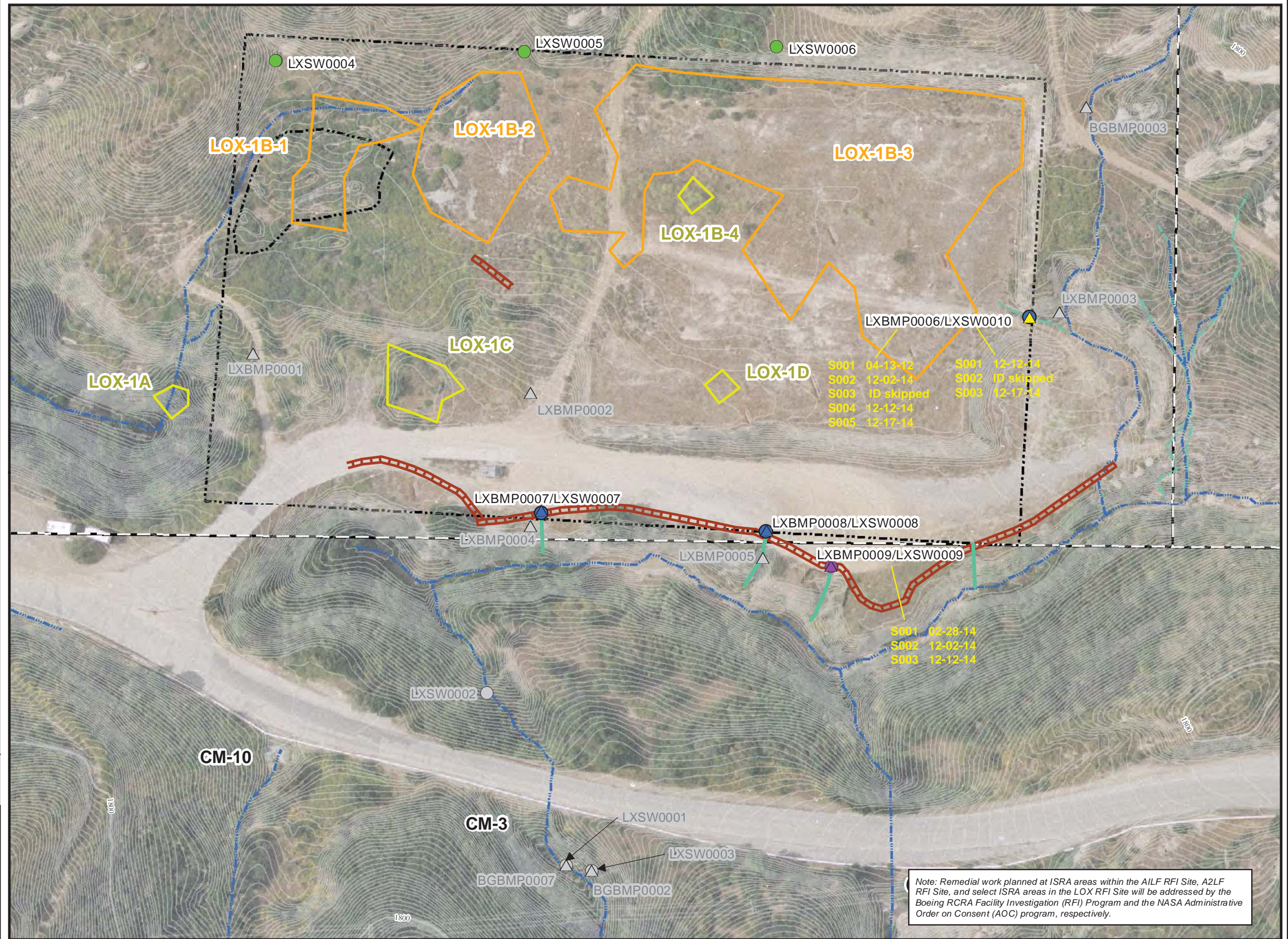
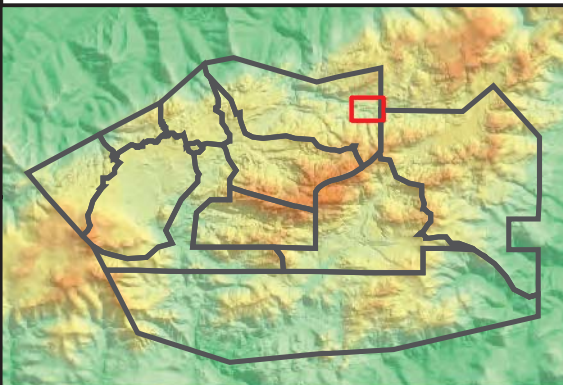
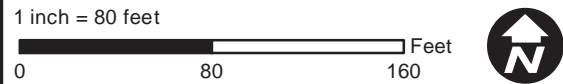
- Base Map Legend**
- Administrative Area Boundary
 - RFI Site Boundary
 - Non Jurisdictional Surface Water Pathway
 - Surface Water Divide
 - Drainage

- Figure Legend**
- Primary Downstream ISRA Performance Monitoring Location
 - Upstream ISRA Performance Monitoring Location
 - Discontinued ISRA Performance Monitoring Location
 - Alternate Downstream ISRA Performance Monitoring Location
 - Potential BMP Subarea Monitoring Location
 - Downstream BMP Performance Monitoring Location
 - Discontinued Potential BMP Subarea Monitoring Location
 - Alternate BMP Performance Monitoring Location
 - Actual ISRA Excavation Boundary
 - Former Planned ISRA Area Boundary
 - Sandbags
 - Slope Drain

Note:

- Aerial imagery from 2010 Sage Consulting.
- Topographic contours from 2010 Sage Consulting.
- Rationale for discontinuing monitoring at previous sample locations can be found in the text and/or tables of the 2010/2011, 2011/2012, 2012/2013, 2013/2014, and 2014/2015 Rainy Season Sampling and Analysis Plan.

Path: \\SD-004\gsp\project\rock3\ISRA\Figures\PerMon\2014-2015 Rainy Season\ISRA_BMP\LOX_Fig2-3.mxd
Date: 8/11/2015



Note: Remedial work planned at ISRA areas within the AILF RFI Site, A2LF RFI Site, and select ISRA areas in the LOX RFI Site will be addressed by the Boeing RCRA Facility Investigation (RFI) Program and the NASA Administrative Order on Consent (AOC) program, respectively.

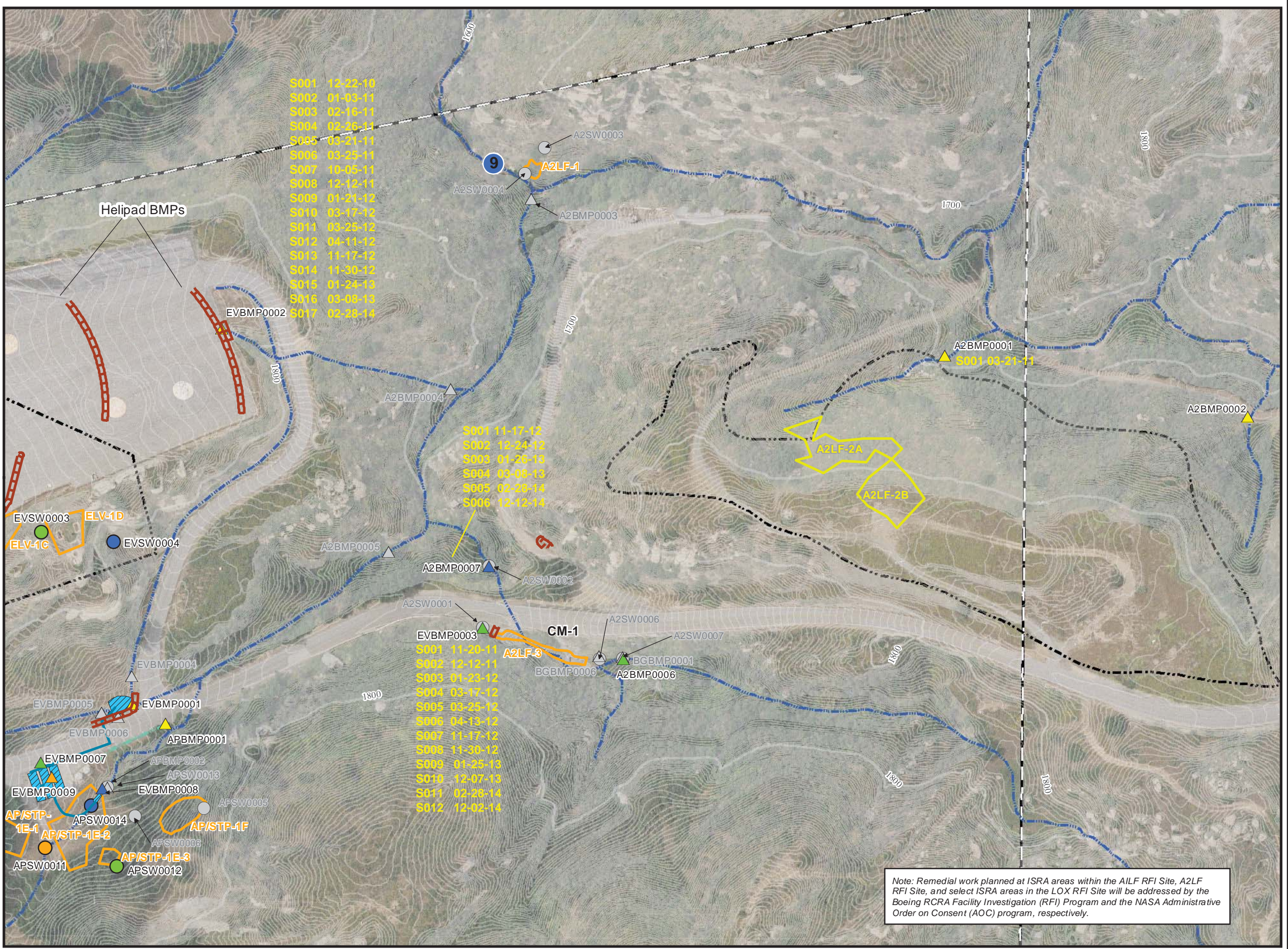
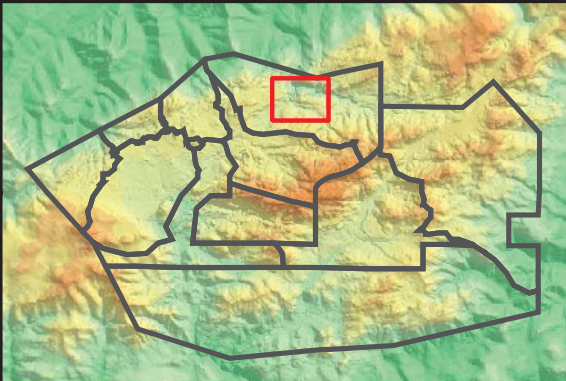
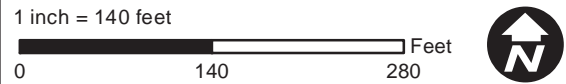
Outfall 009 BMP and Performance Monitoring Locations A2LF and ELV Areas - NASA

- ### Base Map Legend
- Administrative Area Boundary
 - RFI Site Boundary
 - Drainage
 - Non Jurisdictional Surface Water Pathway
 - Surface Water Divide
 - NPDES Outfall

- ### Figure Legend
- Primary Downstream ISRA Performance Monitoring Location
 - Upstream ISRA Performance Monitoring Location
 - Secondary ISRA Performance Monitoring Location
 - Discontinued ISRA Performance Monitoring Location
 - Potential BMP Subarea Monitoring Location
 - Downstream BMP Performance Monitoring Location
 - Upstream BMP Performance Monitoring Location
 - Mid-Point BMP Performance Monitoring Location
 - Discontinued Potential BMP Subarea Monitoring Location
 - Actual ISRA Excavation Boundary
 - Former Planned ISRA Area Boundary
 - Sandbags
 - Treatment BMP Feature
 - Treatment BMP Conveyance - Pipeline

Note:
 1. Aerial imagery from 2010 Sage Consulting.
 2. Topographic contours from 2010 Sage Consulting.
 3. Rationale for discontinuing monitoring at previous sample locations can be found in the text and/or tables of the 2010/2011, 2011/2012, 2012/2013, 2013/2014, and 2014/2015 Rainy Season Sampling and Analysis Plan.

Path: T:\project\lock\ISRA\Figures\PerfMon\2014-2015 Rainy Season\ISRA_BMP\A2LF_Fig2-4_b.mxd
 Date: 8/12/2015



Note: Remedial work planned at ISRA areas within the AILF RFI Site, A2LF RFI Site, and select ISRA areas in the LOX RFI Site will be addressed by the Boeing RCRA Facility Investigation (RFI) Program and the NASA Administrative Order on Consent (AOC) program, respectively.



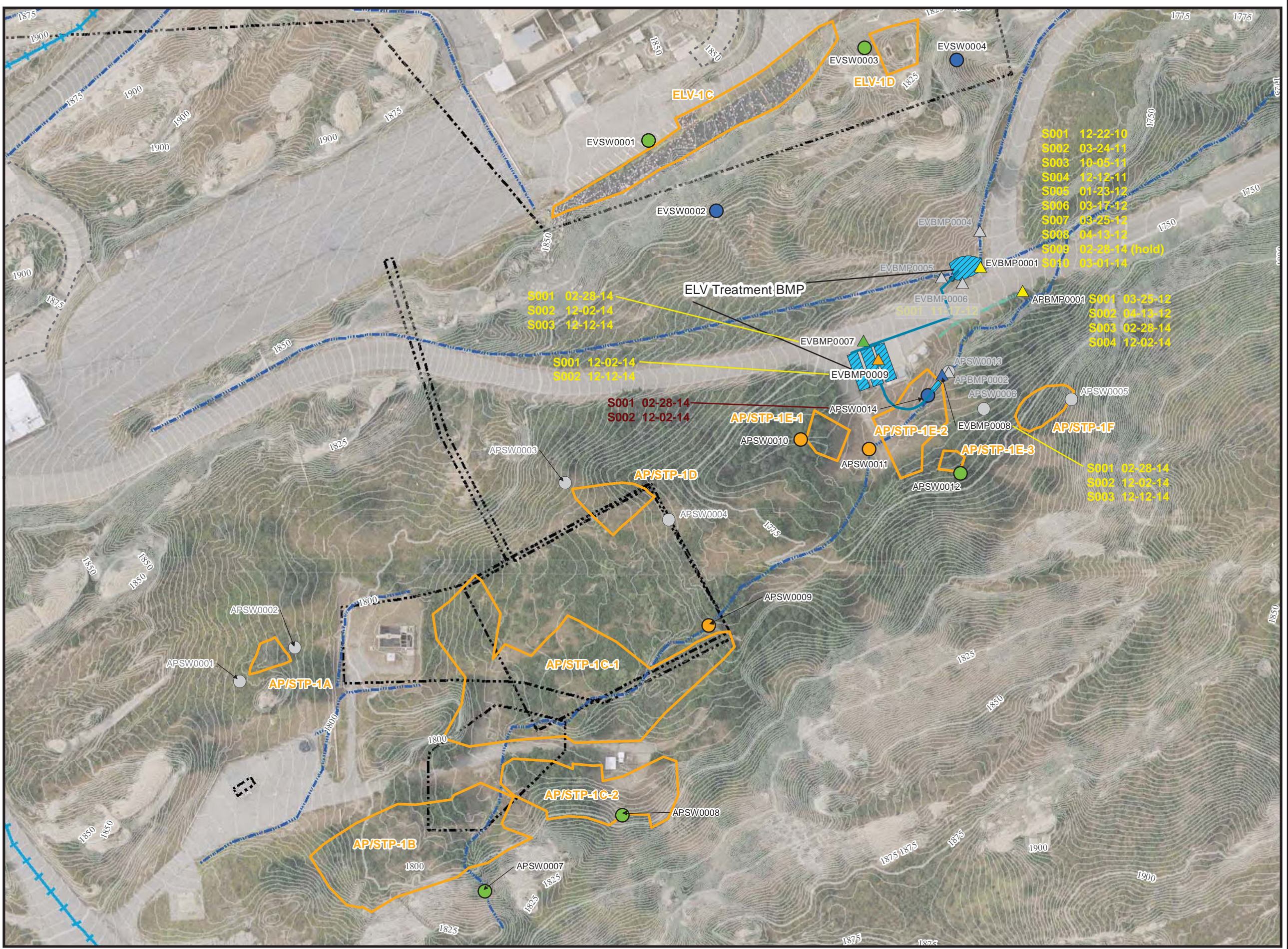
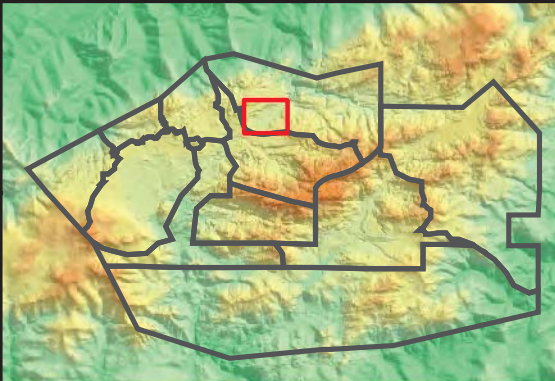
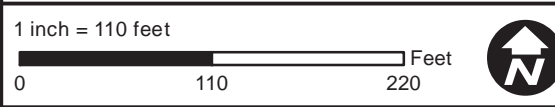
Outfall 009 BMP and Performance Monitoring Locations AP/STP Area - NASA

- Base Map Legend**
- Administrative Area Boundary
 - Non Jurisdictional Surface Water Pathway
 - RFI Site Boundary
 - Surface Water Divide
 - Drainage

- Figure Legend**
- Primary Downstream ISRA Performance Monitoring Location
 - Upstream ISRA Performance Monitoring Location
 - Secondary ISRA Performance Monitoring Location
 - Discontinued ISRA Performance Monitoring Location
 - Potential BMP Subarea Monitoring Location
 - Downstream BMP Performance Monitoring Location
 - Upstream BMP Performance Monitoring Location
 - Mid-Point BMP Performance Monitoring Location
 - Discontinued Potential BMP Subarea Monitoring Location
 - Actual ISRA Excavation Boundary
 - Asphalt Removal
 - Treatment BMP Feature
 - Treatment BMP Conveyance - Pipeline

Note:
 1. Aerial imagery from 2010 Sage Consulting.
 2. Topographic contours from 2010 Sage Consulting.
 3. Rationale for discontinuing monitoring at previous sample locations can be found in the text and/or tables of the 2010/2011, 2011/2012, 2012/2013, 2013/2014, and 2014/2015 Rainy Season Sampling and Analysis Plan.

Path: \\SD-004\gsp\project\rock3\ISRA\Figures\PerMon\2014-2015 Rainy Season\ISRA_BMP\APSTP_Fig2-5.mxd
 Date: 8/3/2015



S001	12-22-10
S002	03-24-11
S003	10-05-11
S004	12-12-11
S005	01-23-12
S006	03-17-12
S007	03-25-12
S008	04-13-12
S009	02-28-14 (hold)
S010	03-01-14
S001	03-25-12
S002	04-13-12
S003	02-28-14
S004	12-02-14
S001	02-28-14
S002	12-02-14
S003	12-12-14

