

PRELIMINARY

2.0 AIRPLANE DESCRIPTION

2.1 General Characteristics

2.2 General Dimensions

2.3 Ground Clearances

2.4 Interior Arrangements

2.5 Cabin Cross Sections

2.6 Lower Cargo Compartments

2.7 Door Clearances

PRELIMINARY

2.0 AIRPLANE DESCRIPTION

2.1 General Characteristics

Maximum Design Taxi Weight (MTW). Maximum weight for ground maneuver as limited by aircraft strength and airworthiness requirements. (It includes weight of taxi and run-up fuel.)

Maximum Design Takeoff Weight (MTOW). Maximum weight for takeoff as limited by aircraft strength and airworthiness requirements. (This is the maximum weight at start of the takeoff run.)

Maximum Design Landing Weight (MLW). Maximum weight for landing as limited by aircraft strength and airworthiness requirements.

Maximum Design Zero Fuel Weight (MZFW). Maximum weight allowed before usable fuel and other specified usable agents must be loaded in defined sections of the aircraft as limited by strength and airworthiness requirements.

Operating Empty Weight (OEW). Weight of structure, powerplant, furnishing systems, unusable fuel and other unusable propulsion agents, and other items of equipment that are considered an integral part of a particular airplane configuration. Also included are certain standard items, personnel, equipment, and supplies necessary for full operations, excluding usable fuel and payload.

Maximum Payload. Maximum design zero fuel weight minus operational empty weight.

Maximum Seating Capacity. The maximum number of passengers specifically certificated or anticipated for certification.

Maximum Cargo Volume. The maximum space available for cargo.

Usable Fuel. Fuel available for aircraft propulsion.

PRELIMINARY

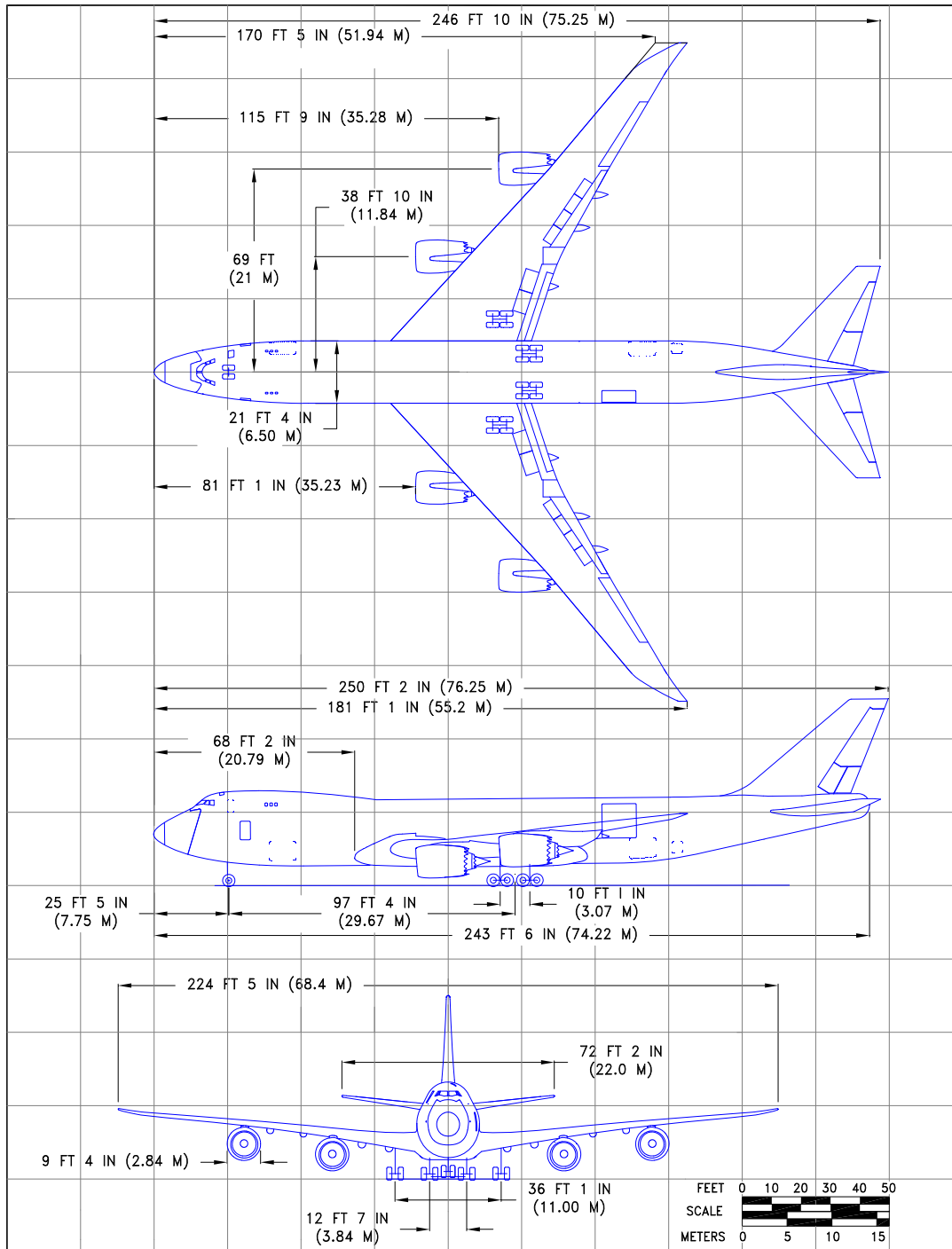
CHARACTERISTICS	UNITS	GE _n x 2B67 ENGINES
MAX DESIGN TAXI WEIGHT	POUNDS	978,000
	KILOGRAMS	443,614
MAX DESIGN TAKEOFF WEIGHT	POUNDS	975,000
	KILOGRAMS	442,253
MAX DESIGN LANDING WEIGHT	POUNDS	757,000
	KILOGRAMS	343,370
MAX DESIGN ZERO FUEL WEIGHT	POUNDS	717,000
	KILOGRAMS	325,226
SPEC OPERATING EMPTY WEIGHT	POUNDS	421,200
	KILOGRAMS	191,053
MAX STRUCTURAL PAYLOAD	POUNDS	295,200
	KILOGRAMS	133,901
TYPICAL SEATING CAPACITY (INCLUDES UPPER DECK)	UPPER DECK	N/A FOR FREIGHTER
	MAIN DECK	N/A FOR FREIGHTER
MAX CARGO - LOWER DECK CONTAINERS (LD-1)	CUBIC FEET	5,536
	CUBIC METERS	157
MAX CARGO - LOWER DECK BULK CARGO	CUBIC FEET	835
	CUBIC METERS	24
USABLE FUEL CAPACITY	U.S. GALLONS	60,211
	LITERS	227,923
	POUNDS	403,414
	KILOGRAMS	182,981

NOTES:

1. SPEC OPERATING EMPTY WEIGHT REFLECTS STANDARD ITEM ALLOWANCES. ACTUAL OEW WILL VARY WITH AIRPLANE CONFIGURATION. CONSULT USING AIRLINE FOR ACTUAL OEW.

2.1.1 GENERAL CHARACTERISTICS
MODEL 747-8F

PRELIMINARY

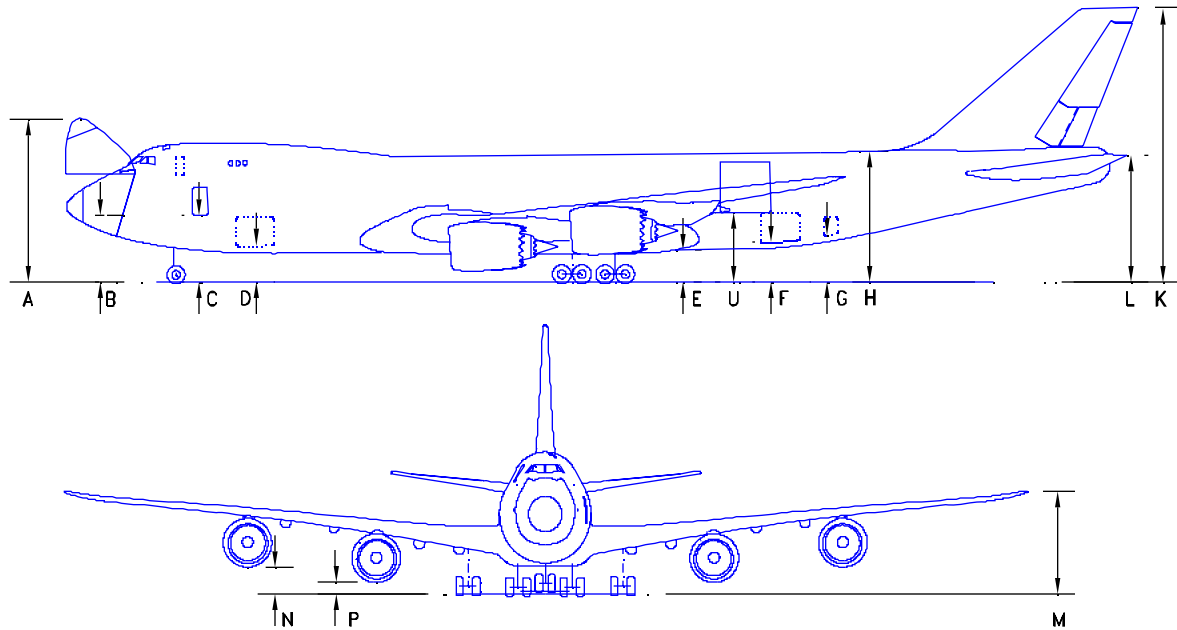


2.2 GENERAL DIMENSIONS MODEL 747-8F

D6-58326-3

8 SEPTEMBER 2008

PRELIMINARY



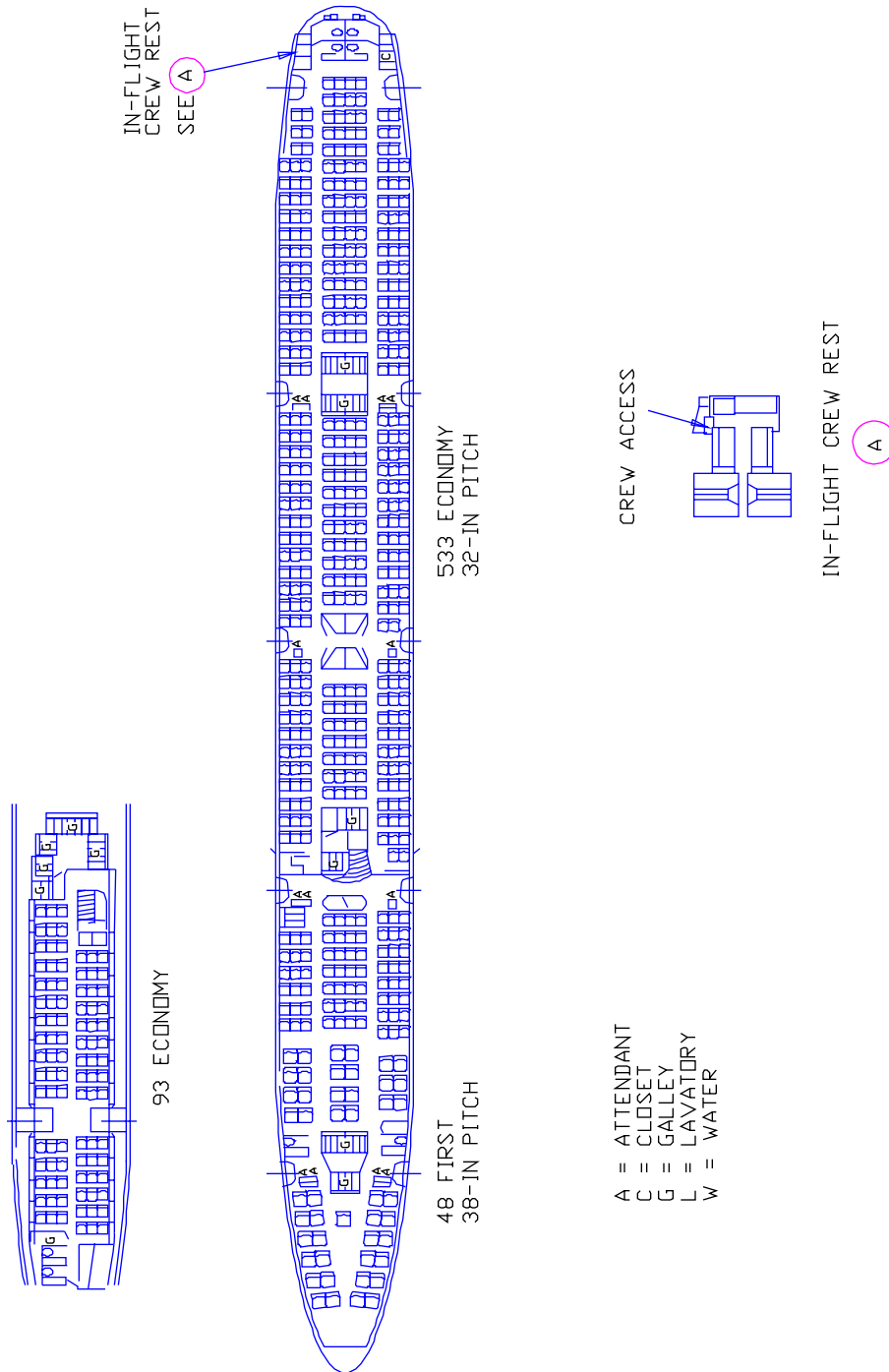
	MINIMUM		MAXIMUM	
	FT - IN	M	FT - IN	M
A	TBD	TBD	TBD	TBD
B	15 - 6	4.72	17 - 11	5.46
C	15 - 8	4.80	17 - 8	5.41
D	9 - 1	2.77	10 - 10	3.30
E	TBD	TBD	TBD	TBD
F	9 - 1	2.77	10 - 9	3.23
G	9 - 7	2.92	11 - 4	3.45
H	TBD	TBD	TBD	TBD
K	TBD	TBD	TBD	TBD
L	TBD	TBD	TBD	TBD
M	TBD	TBD	TBD	TBD
N	TBD	TBD	TBD	TBD
P	TBD	TBD	TBD	TBD
U	16 - 0	4.88	17 - 3	5.26

NOTES: VERTICAL CLEARANCES SHOWN OCCUR DURING MAXIMUM VARIATIONS OF AIRPLANE ATTITUDE. COMBINATIONS OF AIRPLANE LOADING/UNLOADING ACTIVITIES THAT PRODUCE THE GREATEST POSSIBLE VARIATIONS OF ATTITUDE WERE USED TO ESTABLISH THE VARIATIONS SHOWN. DURING ROUTINE SERVICING, THE AIRPLANE REMAINS RELATIVELY STABLE; PITCH AND ELEVATION CHANGES OCCUR SLOWLY.

AT MAJOR TERMINALS, A GSE TETHERING DEVICE MAY BE USED TO MAINTAIN STABILITY BETWEEN THE MAIN DECK DOOR SILL AND THE LOADING DOCK. CARGO BRIDGE ATTACHMENT FITTINGS LOCATED ON THE NOSE DOOR SILL AT THE FORWARD EDGE OF THE MAIN CARGO DOOR DECK MAY BE USED FOR NOSE DOOR SILL STABILIZATION.

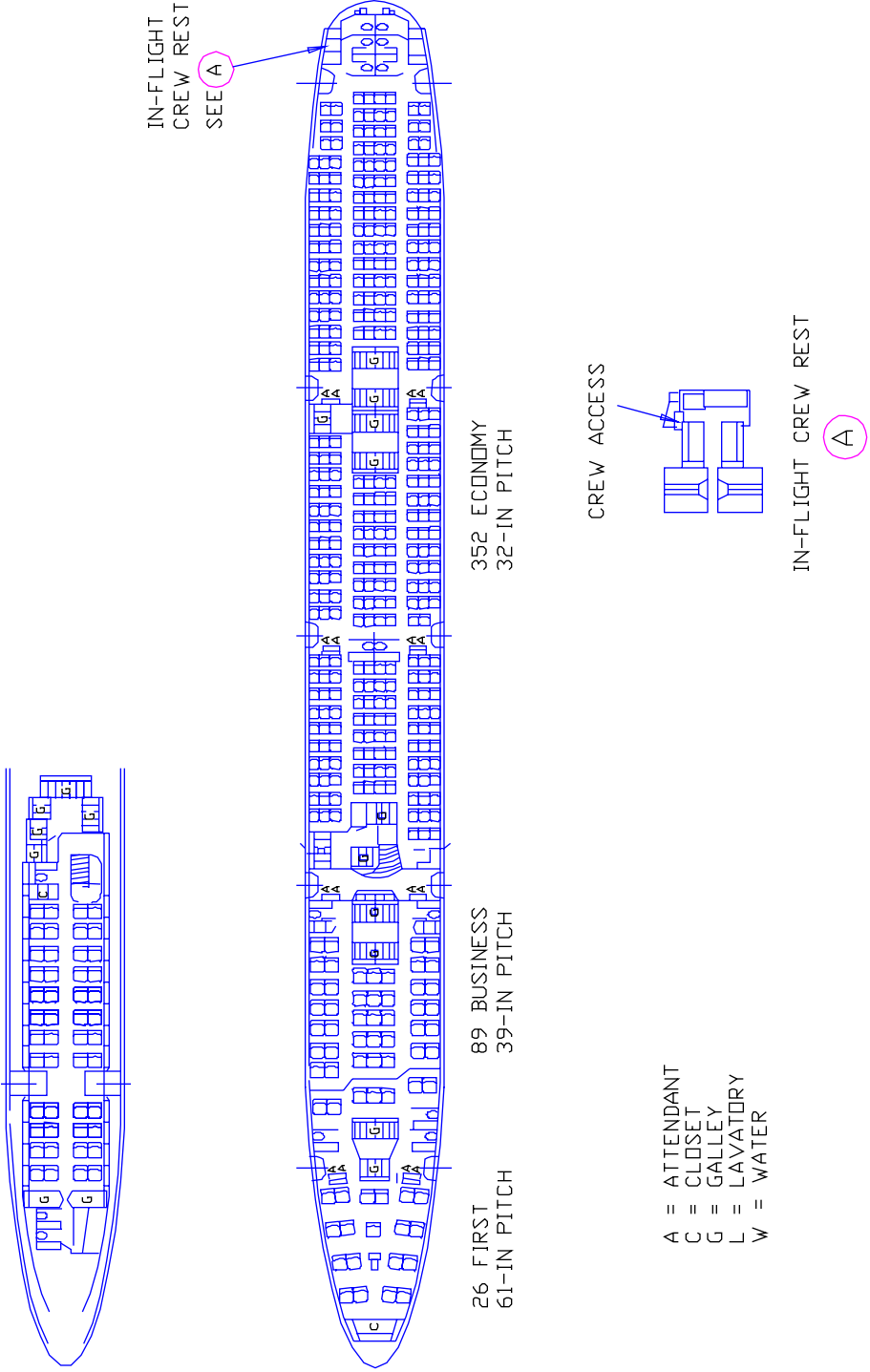
2.3 GROUND CLEARANCES MODEL 747-8F

PRELIMINARY



2.4.1 TYPICAL INTERIOR ARRANGEMENTS, TWO CLASS, 581 PASSENGERS
MODEL 747-8

PRELIMINARY



2.4.2 TYPICAL INTERIOR ARRANGEMENTS, THREE CLASS, 467 PASSENGERS
 MODEL 747-8

PRELIMINARY

THIS PAGE IS BEING REVISED AND WILL BE PUBLISHED SOON.

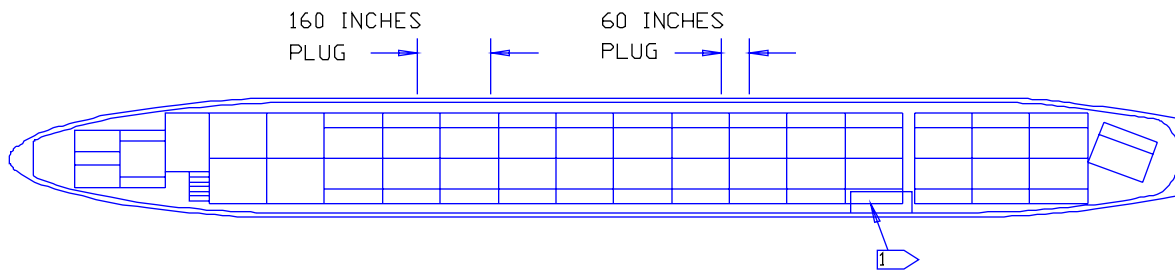
2.4.3 TYPICAL INTERIOR ARRANGEMENTS
MODEL 747-8F

PRELIMINARY

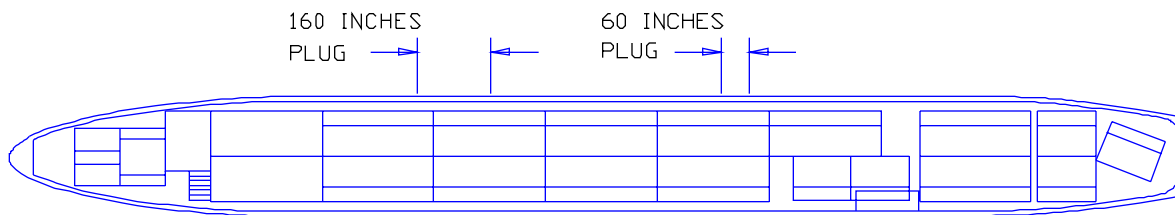
THIS PAGE IS BEING REVISED AND WILL BE PUBLISHED SOON.

2.5 CABIN CROSS-SECTIONS
MODEL 747-8F

PRELIMINARY

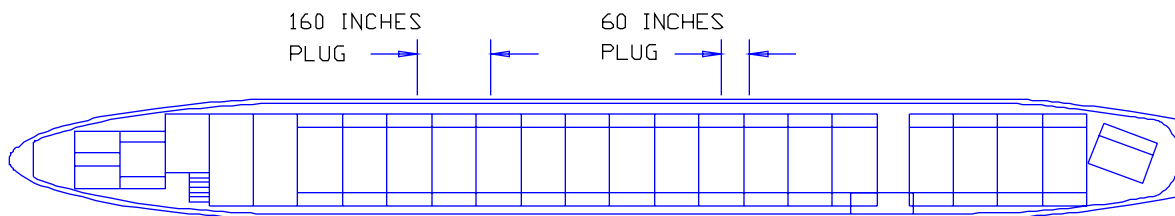


<34> 96 INCHES X 125 INCHES PALLETS



<13> 96 INCHES X 238.5 INCHES PALLETS

<8> 96 INCHES X 125 INCHES PALLETS



<19> 96 INCHES X 196 INCHES PALLETS

<4> 96 INCHES X 125 INCHES PALLETS

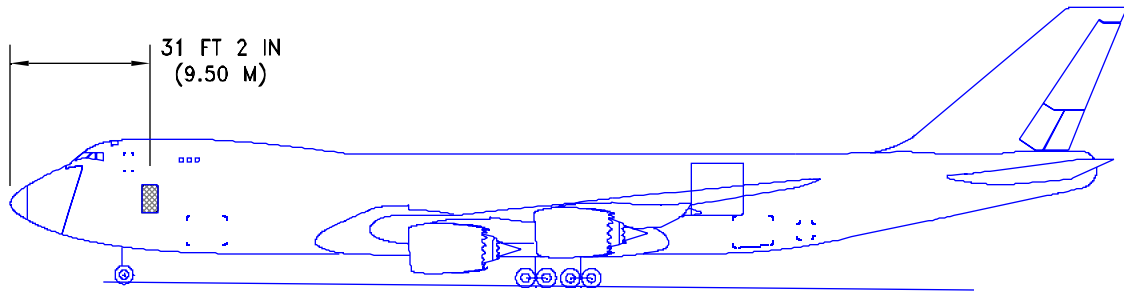
<24 ADDITIONAL PALLET LOCKS REQUIRED>

 88 INCHES X 125 INCHES PALLETS ARE LIMITED TO THESE POSITIONS ONLY.

2.6 LOWER CARGO COMPARTMENTS - CONTAINERS AND BULK CARGO MODEL 747-8F

D6-58326-3

PRELIMINARY

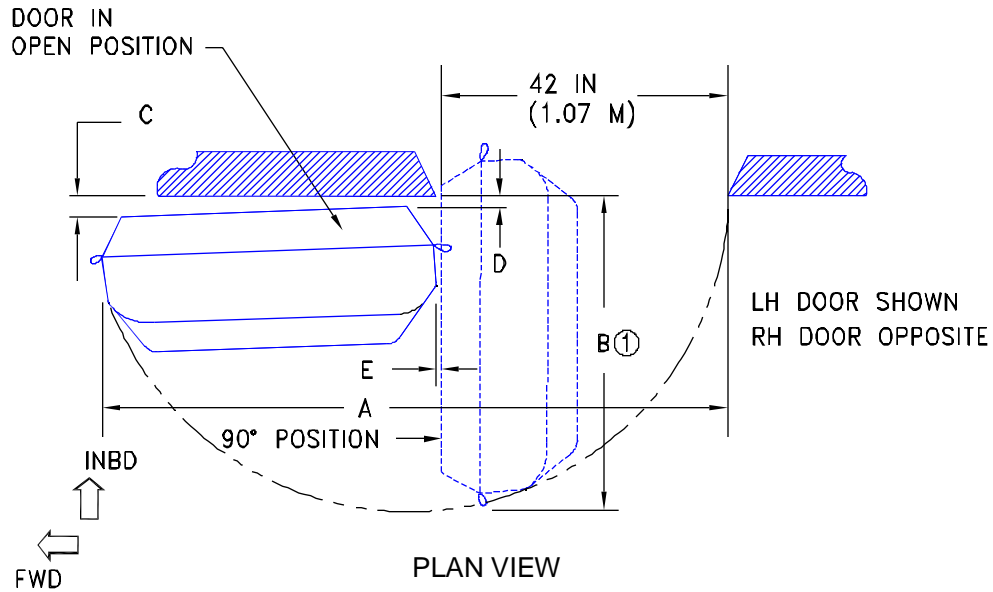


NOTES:

- (1) 1 PASSENGER DOOR - LEFT SIDE ONLY
DOOR OPENING SIZE = 42 BY 76 IN (1.07 BY 1.93 M)
OVERALL DOOR SIZE = 47 BY 76 IN (1.19 BY 1.93 M)
- (2) SEE SECTION 2.3 FOR DOOR SILL HEIGHTS

2.7.1 DOOR CLEARANCES - MAIN ENTRY DOOR LOCATIONS
MODEL 747-8F

PRELIMINARY



DOOR NUMBER	
1 ②	
A	7 FT 6 IN
	2.29 M
B ①	3 FT 9 IN
	1.14 M
C	4 IN
	0.102 M
D	1 IN
	0.025 M
E	1 IN
	0.025 M

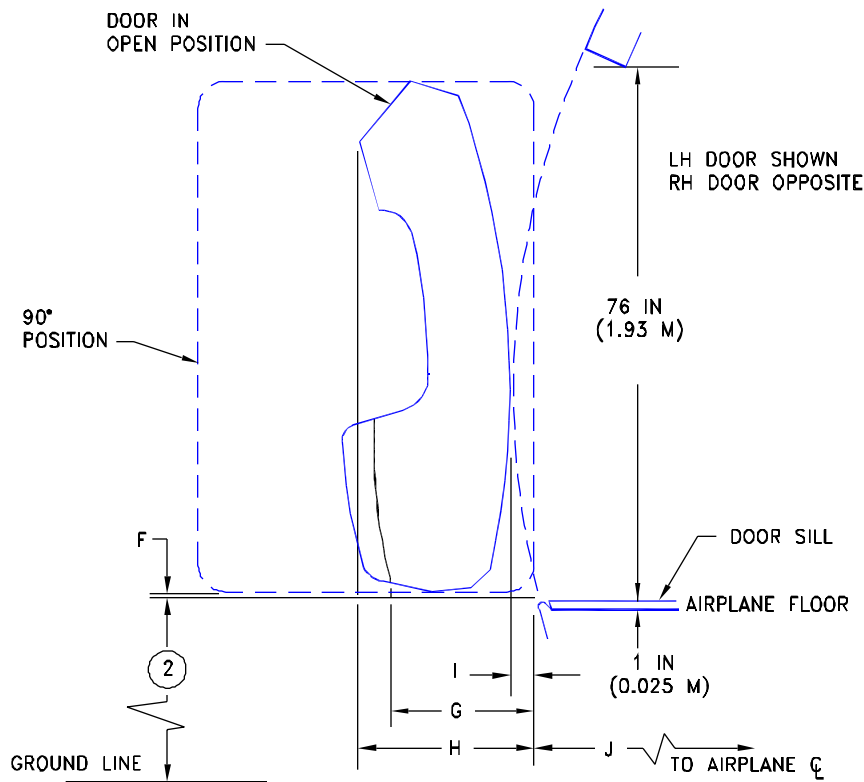
① MEASURED AT DOOR OPENING CENTERLINE AT DOOR SILL LEVEL AT 90° FROM AIRPLANE CENTERLINE.

② LH SIDE ONLY ON 747-8F.

2.7.2 DOOR CLEARANCES - MAIN ENTRY DOORS (PLAN VIEW) MODEL 747-8F

D6-58326-3

PRELIMINARY



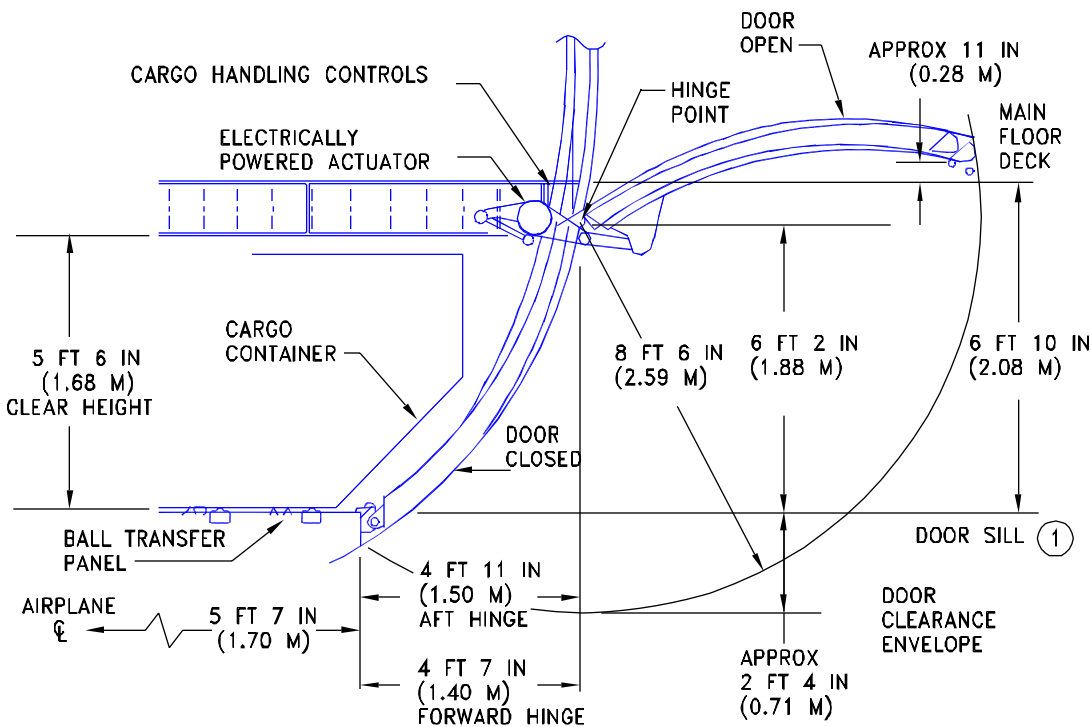
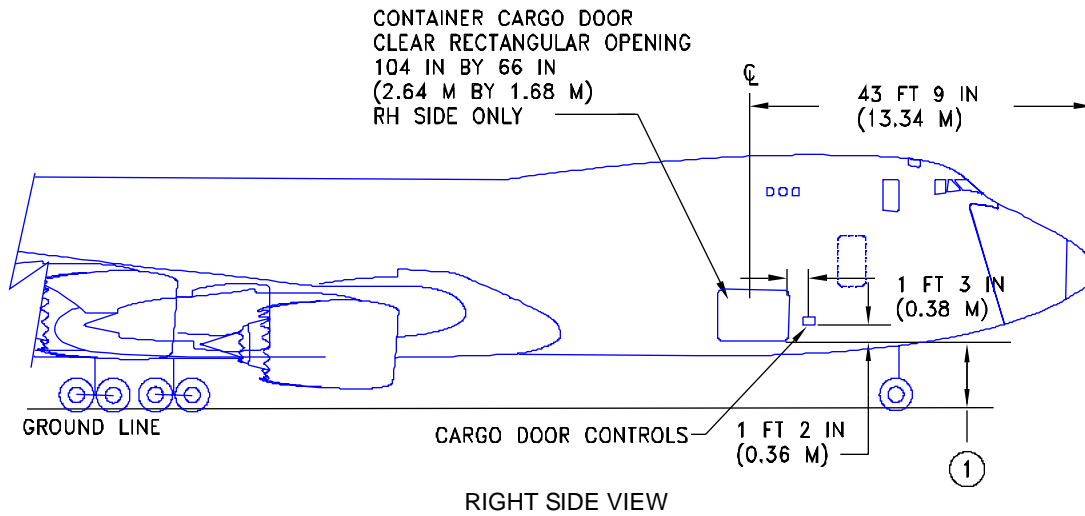
VIEW LOOKING FORWARD

DOOR NUMBER	
1 (3)	
F	2 IN (0.05 M)
G (1)	1 FT 7 IN (0.48 M)
H (1)	1 FT 11 IN (0.58 M)
I (1)	1 IN (0.025 M)
J (1)	9 FT 6 IN (2.90 M)

- (1) MEASURED AT DOOR OPENING CENTERLINE AT DOOR SILL LEVEL AT 90° FROM AIRPLANE CENTERLINE
- (2) SEE SEC. 2.3 FOR DOOR SILL HEIGHTS
- (3) LH SIDE ONLY ON 747-8F

2.7.3 DOOR CLEARANCES - MAIN ENTRY DOOR 1 (SIDE VIEW) MODEL 747-8F

PRELIMINARY

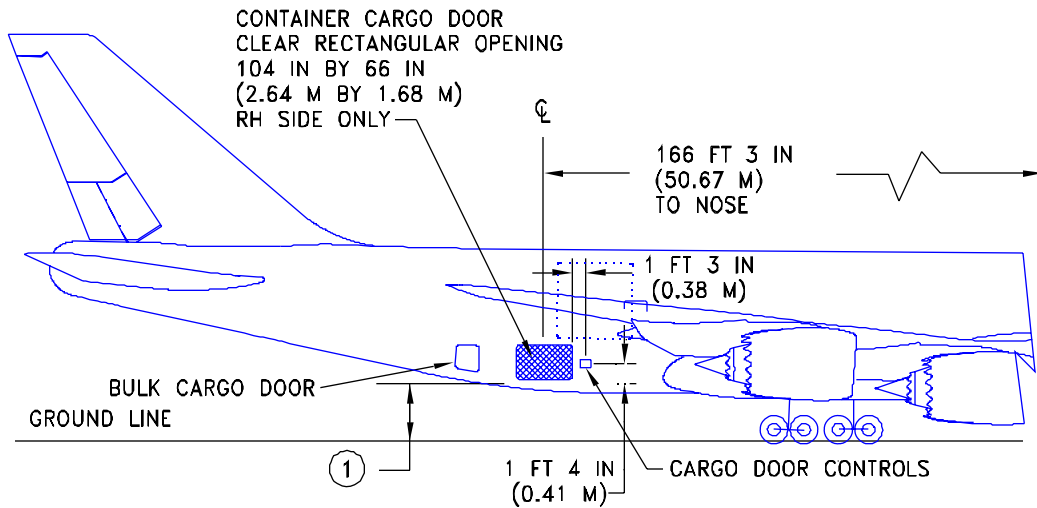


CONTAINER CARGO DOOR - VIEW LOOKING FORWARD

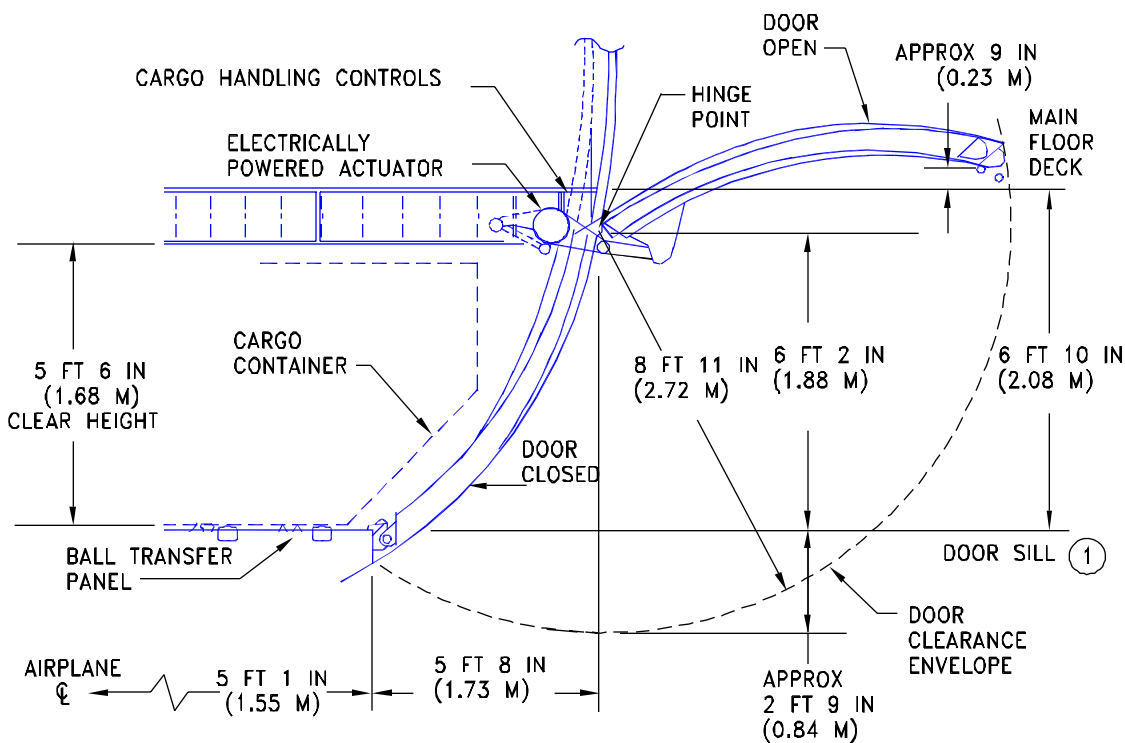
① SEE SECTION 2.3 FOR DOOR SILL HEIGHTS

2.7.4 DOOR CLEARANCES – LOWER FORWARD CARGO COMPARTMENT MODEL 747-8F

PRELIMINARY



RIGHT SIDE VIEW

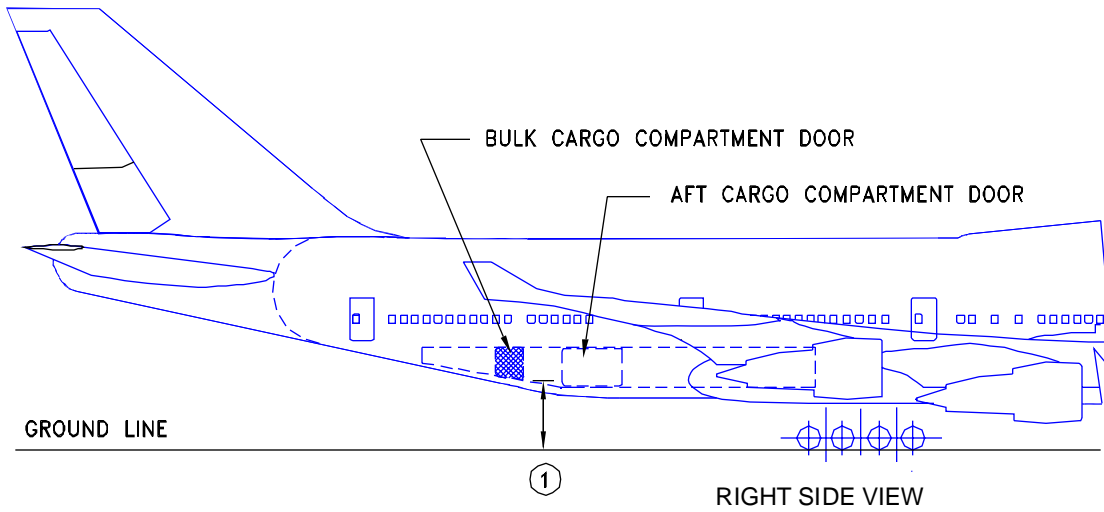


CONTAINER CARGO DOOR - VIEW LOOKING FORWARD

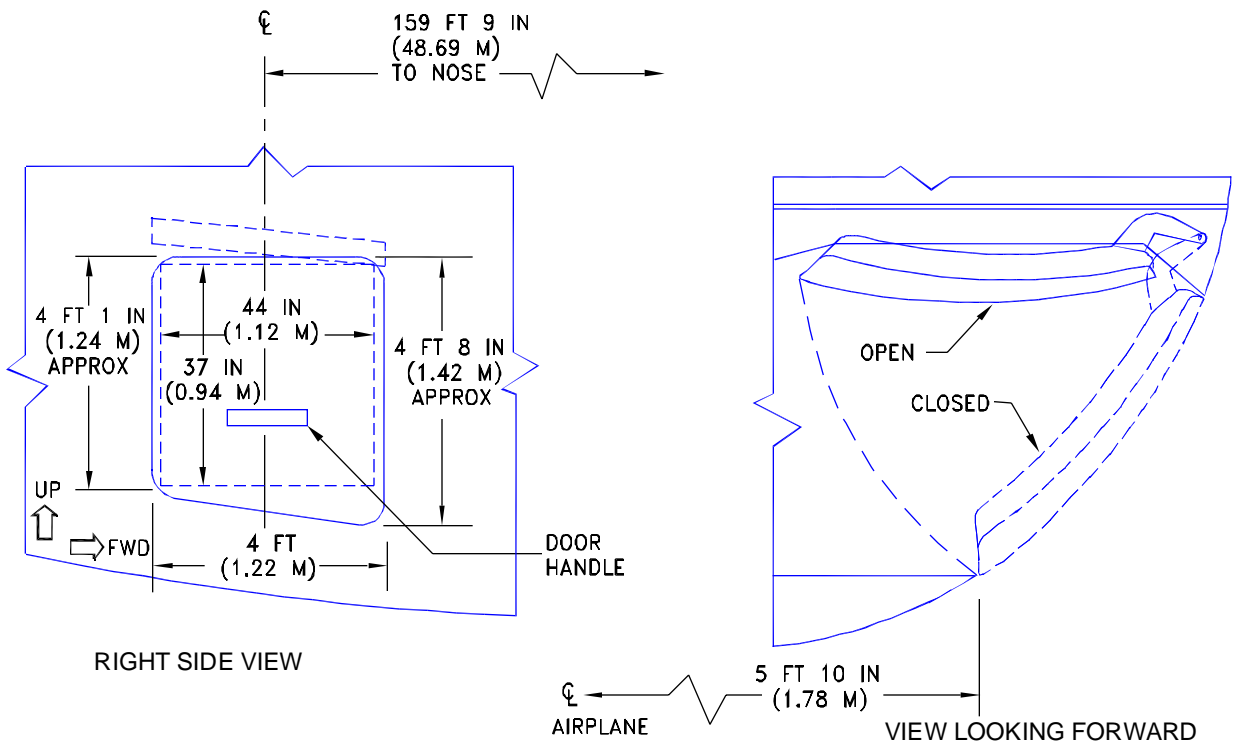
① SEE SECTION 2.3 FOR DOOR SILL HEIGHTS

2.7.5 DOOR CLEARANCES – LOWER AFT CARGO COMPARTMENT MODEL 747-8F

PRELIMINARY

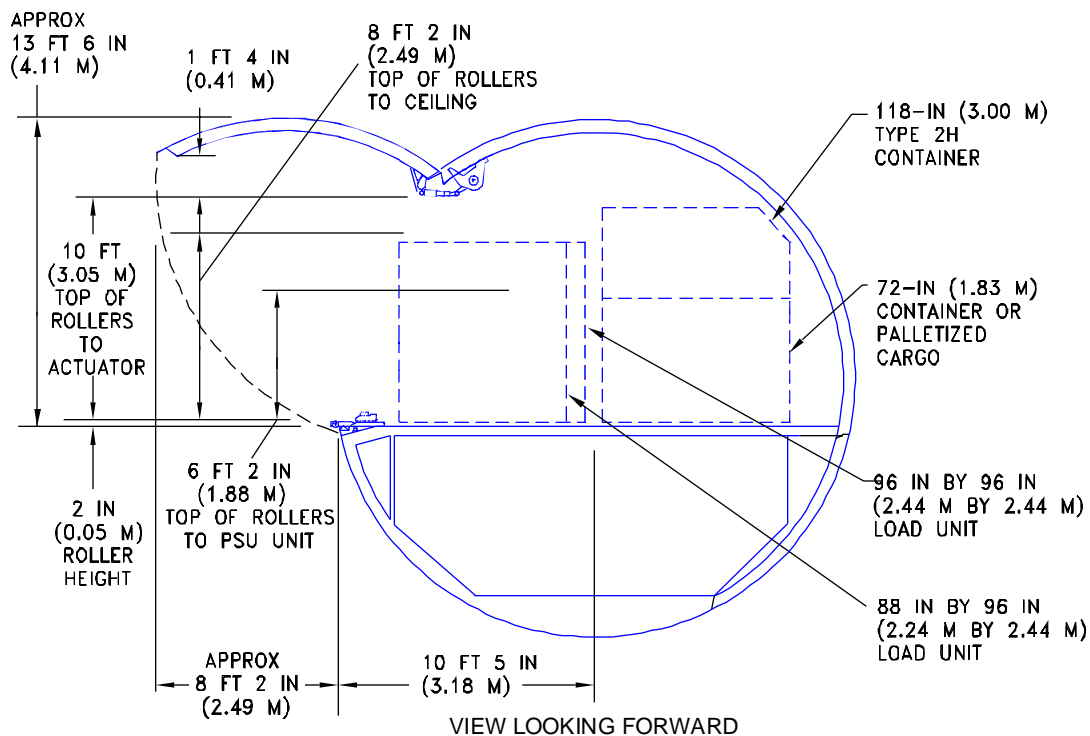
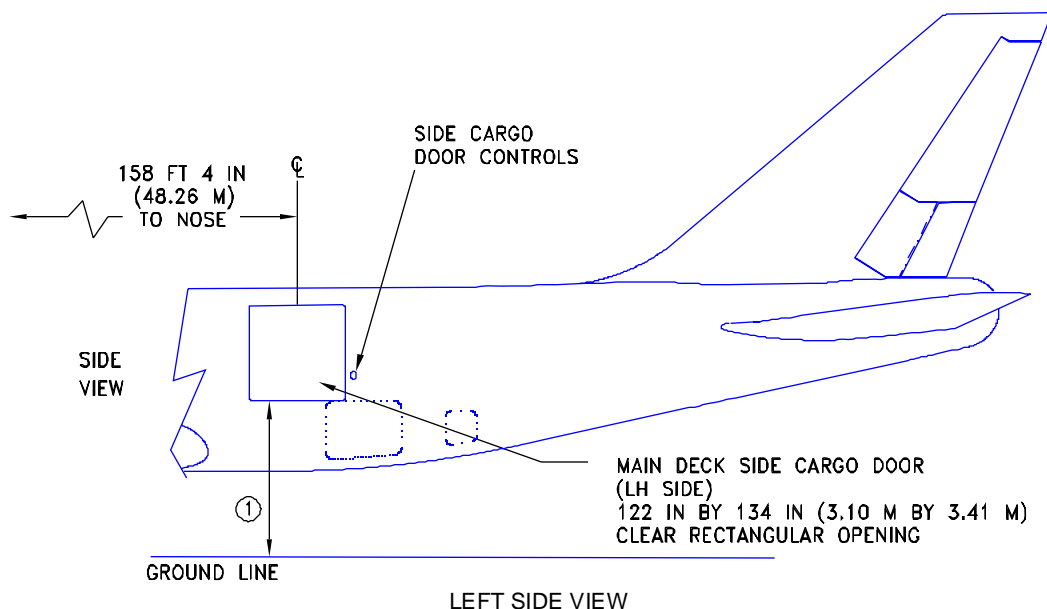


① SEE SECTION 2.3 FOR DOOR SILL HEIGHTS



2.7.6 DOOR CLEARANCES - BULK CARGO COMPARTMENT MODEL 747-8F

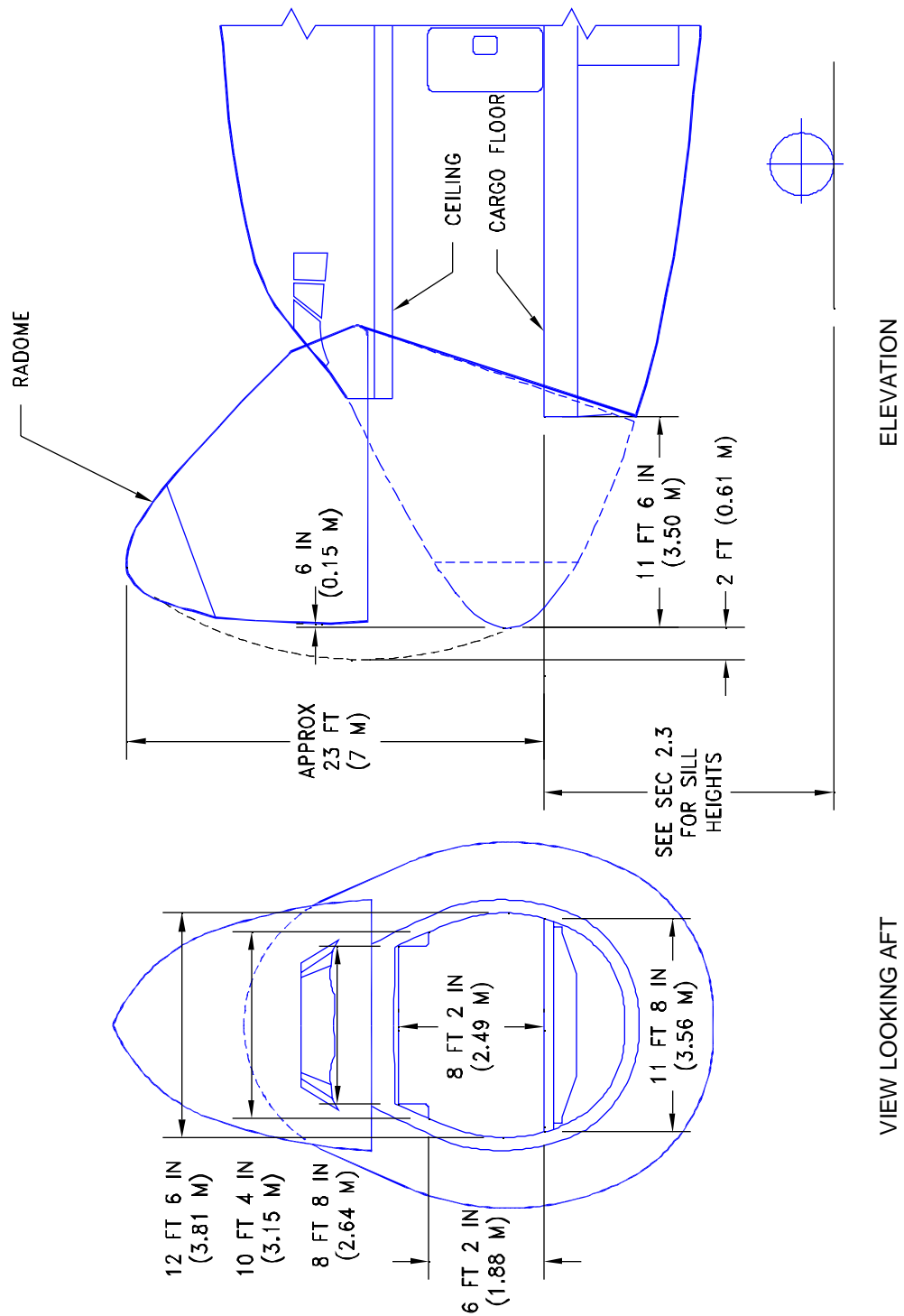
PRELIMINARY



① SEE SECTION 2.3 FOR DOOR SILL HEIGHTS

2.7.7 DOOR CLEARANCES – MAIN DECK CARGO DOOR MODEL 747-8F

PRELIMINARY



2.7.8 DOOR CLEARANCES - NOSE CARGO DOOR MODEL 747-8F