



OPERATIONAL PERFORMANCE

# Maintenance Performance Toolbox



LIFECYCLE  
SOLUTIONS



# MAINTENANCE PERFORMANCE TOOLBOX

## TURNING INFORMATION INTO ACTION

### Raise Your Expectations

**Boeing delivers LIFECYCLE SOLUTIONS,** products, services, and support that will help you achieve success and maximize the value of your Boeing fleet through its life. And Boeing has a set of LIFECYCLE SOLUTIONS focused on operational performance that can help your maintenance, engineering, and flight operations personnel perform their work in the most effective manner possible, increasing efficiency and profitability.

As a Boeing LIFECYCLE SOLUTION, the **Maintenance Performance Toolbox** goes far beyond your expectations for airplane maintenance software. It's a whole new category of maintenance tool — an integrated suite of applications that do for airline maintenance operations what integrated text, data, and graphics suites did for the front office; that is, increase productivity and performance.

Maintenance Performance Toolbox will change what you expect to accomplish — in an hour, in a shift, in the time allotted. The Maintenance Performance Toolbox is easy to use. Active links within 2D and 3D system diagrams and structural models take you directly to the information you need. The Maintenance Performance Toolbox helps engineers efficiently process vital day-to-day tasks. The Toolbox's integrated authoring system handles text, graphics, and even multimedia — an enhancement to the technical publications department.



**Specifically designed to improve maintenance performance**

- Designed to reduce repair turnaround times, eliminate redundant tasks, and maximize knowledge transfer and retention.
- Integrated, role-based approach that allows users to solve specific problems across process, departmental, and organizational boundaries.

- Provides quick access for research, analysis, and reuse of airplane repairs through 3D structural imaging.
- Improved productivity through information sharing with MRO partners.
- Cross-document searching for tail-specific information.
- Designed to link aircraft fault data to specific maintenance actions.

- Full audit trail and regulatory reporting capability.
- Includes key maintenance documents: Aircraft Illustrated Parts Catalog (AIPC), Aircraft Maintenance Manual (AMM), Fault Isolation Manual (FIM), Structural Repair Manual (SRM), Wiring Diagram Manual (WDM) or System Schematic Manual (SSM), and Maintenance Task Cards.

**Airline Operational Challenge**

**Solution**

**Value/Benefit**

**Feature**

<p><b>Quick and easy access to tail-specific maintenance information</b></p>	<p>Systems, Structures</p>	<ul style="list-style-type: none"> <li>■ Increase employee efficiency</li> <li>■ Improved savings in manpower research</li> <li>■ Reduce costly errors</li> <li>■ Significant savings in training of new employees</li> </ul>	<ul style="list-style-type: none"> <li>■ Intelligent graphics linked to work instructions</li> <li>■ Faster, more accurate research within a document or across all documents</li> <li>■ Single source of information</li> <li>■ Repeatable process for new hires and business partners</li> </ul>
<p><b>Maintain regulatory compliance</b></p>	<p>Tasks, Structures</p>	<ul style="list-style-type: none"> <li>■ Reduce costly errors</li> <li>■ Avoid noncompliance fines</li> <li>■ Improved process time of approvals</li> </ul>	<ul style="list-style-type: none"> <li>■ Single source of information</li> <li>■ Standardized and organized</li> <li>■ Full audit trail and regulatory reporting</li> <li>■ Automation of approval routing and notification</li> </ul>
<p><b>Customization of maintenance program</b></p>	<p>Tasks, Authoring</p>	<ul style="list-style-type: none"> <li>■ Reduction of man-hours in approval process</li> <li>■ More efficient maintenance practices</li> </ul>	<ul style="list-style-type: none"> <li>■ Automation of approval routing and notification</li> </ul>

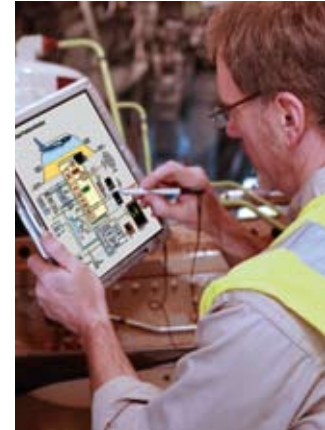
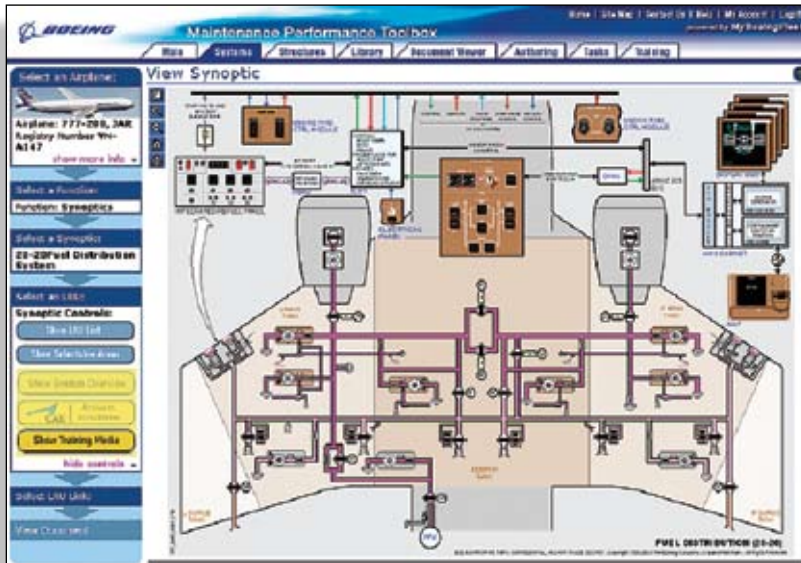
## On Line: Available Anywhere, Anytime

- Hosting on MyBoeingFleet relieves systems operator's burden and ensures 24/7 access.
- Real-time information updates ensure access to the most current technical information.

Operators using Maintenance Performance Toolbox realize the benefits of a maintenance support solution designed to dramatically improve the efficiency and effectiveness of their maintenance and engineering staff.

Toolbox is a hosted service delivered through MyBoeingFleet.com. The system is designed using an industry-standard architecture to ensure maximum security, availability, reliability, and scalability.

Toolbox is billed with fleet-based pricing and annual subscription invoicing. You can enjoy the benefits of Toolbox without large capital expense. Boeing undertakes responsibility for the digital tools and delivery of information and you reap the benefits of improved operational performance.





**Boeing Commercial Airplanes**

P.O. Box 3707, MC 21-85  
Seattle, WA 98124-2207

[www.boeing.com/commercial/aviationservices](http://www.boeing.com/commercial/aviationservices)

The statements contained herein are based on good faith assumptions and provided for general information purposes only. These statements do not constitute an offer, promise, warranty or guarantee of performance. Actual results may vary depending on certain events or conditions. This document should not be used or relied upon for any purpose other than that intended by Boeing.