

# MAINTENANCE PERFORMANCE TOOLBOX

## AUTHORING MODULE

The **Authoring module** provides the ability to modify manufacturer maintenance documents. It integrates customer-configured data and existing data for a user-friendly and easy-to-navigate database.

**Boeing Commercial Airplanes**  
P.O. Box 3707, MC 21-85  
Seattle, WA 98124-2207

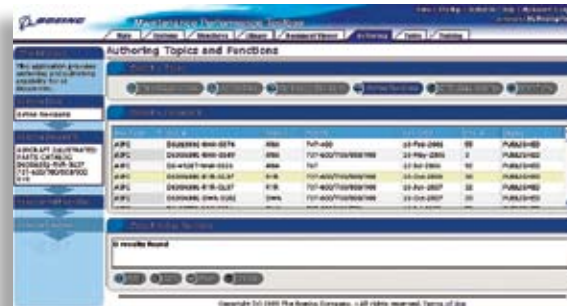
[www.boeing.com/commercial/aviationservices](http://www.boeing.com/commercial/aviationservices)

BOEING is a trademark of Boeing Management Company.  
Copyright © 2009 Boeing. All rights reserved.

## INCORPORATING AIRLINE BEST PRACTICES TO OPTIMIZE EFFICIENCY

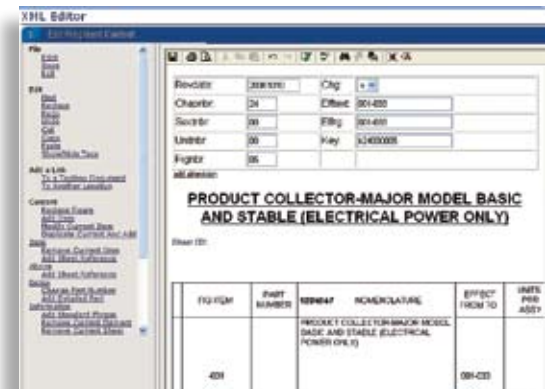
The **Authoring module** helps you to

- Create and customize maintenance documentation to capture and reuse airline best practices.
- Visually identify supplemental data and customer-oriented changes.
- Seamlessly incorporate your supplemental documents into the original equipment manufacturer (OEM) content.



## Key benefits

- Modification of OEM documents to meet operator-specific needs.
- Real-time incorporation of operator-originated changes through online access.
- Automation of approval routing and notification.
- Electronic publishing and revision management.
- Online authoring of structured XML data.



## Key notes

- Requires the Library module.