

MAINTENANCE PERFORMANCE TOOLBOX

SYSTEMS MODULE

The Systems module reduces the time needed to find tail-specific technical information in time-critical situations, such as line maintenance troubleshooting and dispatch.

Boeing Commercial Airplanes

P.O. Box 3707, MC 21-85
Seattle, WA 98124-2207

www.boeing.com/commercial/aviationservices

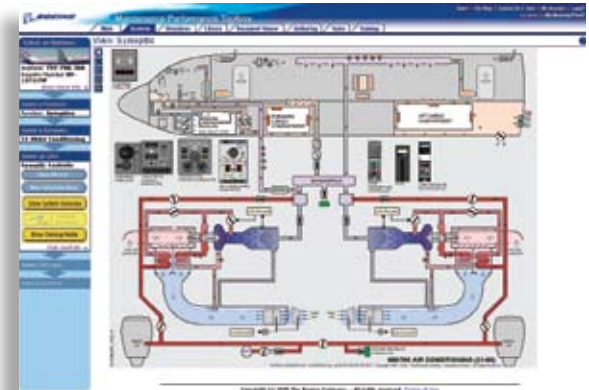
A VISUAL GATEWAY TO CRITICAL TECHNICAL INFORMATION

The Systems module provides you with the ability to

- Enhance your airplane system knowledge and retention with airplane system diagrams (synoptics) that provides both a “mental model” of a particular system and a graphical interface to retrieve line replaceable unit (LRU)-specific information.
- Link from synoptics or LRU lists to find maintenance procedures, troubleshooting information, parts data, wiring diagrams, or maintenance tips associated with a selected LRU.
- Easily search using effectivity filtering for all relevant information related to a maintenance message, fault code, or troubleshooting path.
- Enter a part number and go directly to the applicable in the Aircraft Illustrated Parts Catalog part information.

Key benefits

- Improved troubleshooting and fault isolation through advanced systems knowledge.
- Faster, more accurate research across your Maintenance Library.
- Improved operational performance and safety.
- Faster, more accurate research across all documents.
- Collaborative troubleshooting.



Key notes

- Requires the Library module.