



Country of Origin Marking

Global Trade Controls
Import Management

February 1, 2006

Supplier Instructions for Exports to Boeing

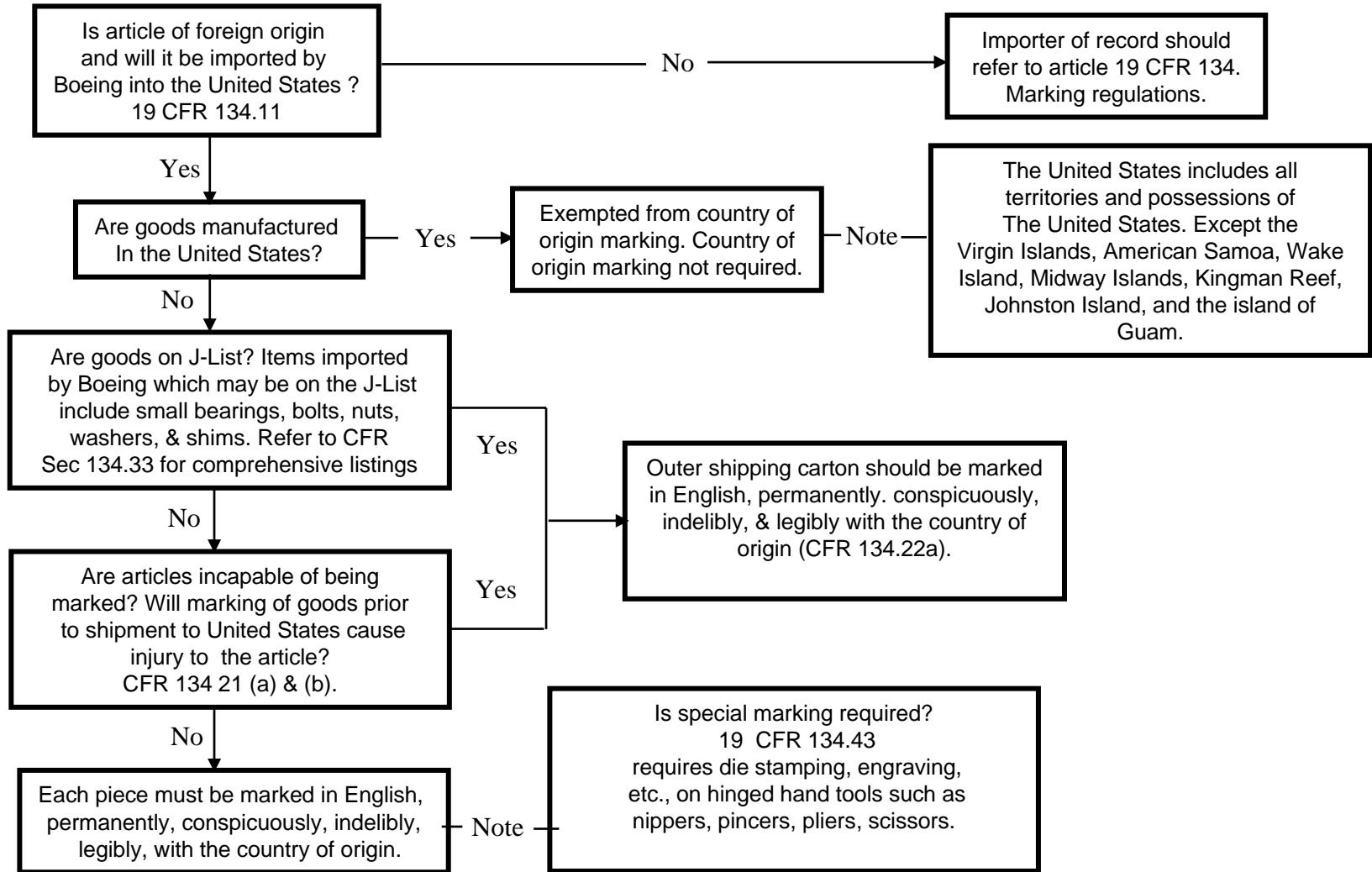
Suppliers exporting to Boeing should adhere to the following Country of Origin Part Marking instructions.

These instructions are Boeing requirements for Country of Origin Part/Package Marking. The information provided is to assist suppliers when exporting to Boeing. These procedures should not be interpreted as a substitute for compliance to U.S. Customs & Border Protection (CBP) regulations. Boeing shall not be responsible for your failure to comply with applicable governmental regulations.

For additional information on marking requirements, please contact your procurement agent.

Country Of Origin Marking Decision Tree

The Boeing Company Policy Regarding Country of Origin Part Making



Boeing Country of Origin Marking Requirements

- Boeing requires that every article of foreign origin (or its container) imported into the United States be marked in English, legibly, conspicuously, indelibly and permanently with the country of origin. **Because Boeing parts may be subject to import, export and reimport, this requirement applies to all imported parts including returns and repairs.**
- **Each article must have the full English name of its country of origin (manufacture) marked on the article (unless excepted). If excepted the outer container of the imported part must be marked with the country of origin.**
- Examples:
 - Made in Japan
 - Product of Korea
 - Manufactured in South Africa

Boeing Country of Origin Marking Requirements

Assembled Articles

Where an article is produced as a result of an assembly operation and the country of origin of such article is determined to be the country in which the article was finally assembled, such article may be marked, as appropriate, in a manner such as the following:

- (1) Assembled in (country of final assembly);
- (2) Assembled in (country of final assembly) from components of (name of country or countries of origin of all components); or
- (3) Made in, or product of, (country of final assembly).

Boeing Country of Origin Marking Requirements

Suggested Methods of Marking

Section 304 of the Tariff Act of 1930, as amended (19 USC 1304) requires that the marking of the country of origin be legible, indelible, and permanent. Definite methods of marking are prescribed only for articles provided for in 134.43 for articles which are objects of special rulings by Customs. **As a general rule, marking requirements are best met by marking worked into the articles at the time of manufacture. For example, it is suggested the country of origin on metal articles be die sunk, molded or etched, on earthenware or chinaware be glazed on in the process of firing, and on paper articles be imprinted.**

Boeing Country of Origin Marking Requirements

Other Acceptable Methods of Marking

- Articles marked with paper sticker labels. If paper sticker or pressure sensitive labels are used, they must be affixed in a conspicuous place so securely that unless deliberately removed they will remain on the article while it is in storage or on display until it is delivered to the ultimate purchaser.
- Articles marked with tags. When tags are used, they must be attached in a conspicuous place and in a manner which assures that unless deliberately removed they will remain on the article until it reaches the ultimate purchaser
- Ultimate purchaser The "ultimate purchaser" is generally the last person in the United States who will receive the article in the form in which it was imported.

Boeing Country of Origin Marking Requirements

Articles appearing on the “J” List

This list is found in 19 CFR 134.33 of the Customs Regulations and in 19 USC 1304J. It names 83 specific goods that do not have to be marked on the good itself, but allows the packaging to carry the country of origin marking. Goods on this list which are imported by Boeing include small ball bearings, bolts, nuts, washers, rivets, etc. Items on the J-list are excepted from individual marking. However their outer container must be marked with the country of origin.

J-List

- Art, works of
- Articles classified under 9801.0015, 9801.0025, 9801.0040 and 9801.0045 Harmonized Tariff Schedule of the United States T.D. 66-153
- Articles entered in good faith as antiques and rejected as unauthentic.
- Bagging, waste.
- Bags, jute
- Bands, steel.
- Beads, unstrung.
- Bearings, ball, 5/8 -inch or less in diameter.
- Blanks, metal, to be plated.
- Bodies, harvest hat.
- Bolts, nuts, and washers.
- Briarwood in blocks .
- Briquettes, coal or coke.
- Buckles, 1 inch or less in greatest dimension.
- Burlap.
- Buttons.
- Cards, playing.
- Cellophane and celluloid in sheets, bands, or strips.
- Chemicals, drugs, medicinal, and similar substances, when imported in capsules, pills, tablets, lozenges, or troches.

J-List

- Cigars cigarettes
- Covers, straw bottle.
- Dies, diamond wire, unmounted.
- Dowels, wooden.
- Effects, theatrical.
- Eggs. Feathers. Firewood.
- Flooring, not further manufactured than planed, tongued and grooved T.D.s 49750; 50366
- Flowers, artificial, except bunches. Flowers, cut.
- Glass, cut to shape and size for use in clocks, hand, pocket, and purse mirrors, and other glass of similar shapes and sizes, not including lenses or watch crystals.
- Glides, furniture, except glides with prongs.
- Hairnets. Hides, raw. Hooks, fish (except snelled fish hooks) T.D. 50205(3).
- Hoops (wood), barrel.
- Laths.
- Leather, except finished.
- Livestock.
- Lumber, sawed T.D.s 49750; 50366(6).
- Metal bars, except concrete reinforcement bars; billets, blocks, blooms; ingots; pigs; plates; sheets, except galvanized sheets; shafting; slabs; and metal in similar forms.
- Mica not further manufactured than cut or stamped to dimensions, shape or form.
- Monuments

J-List

- Nails, spikes, and staples.
- Nets, bottle, wire.
- Paper, newsprint.
- Paper, stencil.
- Natural products, such as vegetables, fruits, nuts, berries, and live or dead animals, fish and birds; all the foregoing which are in their natural state or not advanced in any manner further than is necessary for their safe transportation.
- Paper, stock.
- Parchment and vellum.
- Parts for machines imported from same country as parts.
- Pickets (wood)
- Pins, tuning.
- Plants, shrubs and other nursery stock.
- Plugs, tie.
- Poles, bamboo
- Posts (wood), fence.
- Pulpwood.
- Rags (including wiping rags)
- Rails, joint bars, and tie plates covered by subheadings 7302.1010 through 7302.9000, Harmonized Tariff Schedule of the United States.
- Ribbon.
- Rivets.
- Rope, including wire rope; cordage; cords; twines, threads, and yarns.

J-List

- Scrap and waste.
- Screws.
- Shims, track.
- Shingles (wood), bundles of (except bundles of red-cedar shingles) T.D. 49750.
- Skins, fur, dressed or dyed.
- Skins, raw fur.
- Sponges.
- Springs, watch.
- Stamps, postage and revenue, and other articles covered in subheadings 9704.0000 and 4807.0000, Harmonized Tariff Schedule of the United States T.D. 66-153.
- Staves (wood), barrel.
- Steel, hoop.
- Sugar, maple.
- Ties (wood), railroad.
- Tides, not over 1 inch in greatest dimension.
- Timbers, sawed.
- Tips, penholder.
- Trees, Christmas.
- Weights, analytical and precision in sets T.D.s 49750; 51802.
- Wicking, candle.
- Wire, except barbed T.D. 72-262, 35 FR 20318, Sept. 29, 1972, as amended by T.D. 85-123, 50 FR 29954, July 23, 1985; T.D. 89-1, 53 FR 51256, Dec. 21, 1988; TD 95-79, 60 FR, 49752, Sept. 27, 1995

Boeing Country of Origin Marking Requirements

Special Marking Requirements 134.43

Except for goods of a NAFTA country, articles of a class or kind listed below shall be marked legibly and conspicuously by die stamping, cast in the mold lettering, etching, engraving or by means of metal plates which bear the prescribed marking and which are securely attached to the article in a conspicuous place by welding, screws or rivets: knives, forks, steels, cleavers, clipper, shears, scissors, safety razors, blades for safety razors, surgical instruments, pliers, pincers, nippers and hinged hand tools for holding and splicing wire, vacuum containers and parts of the above articles. Goods of a NAFTA country shall be marked by any reasonable method which is legible, conspicuous and permanent as otherwise provided in this part.

Boeing Country of Origin Marking Requirements

Exceptions to Marking Requirements

Subpart D to Part 134 of the Customs Regulations (CFR 19) lists general exceptions to marking requirements. Note that these exceptions do not apply to any marking required by other agencies.

Because Boeing parts may be subject to import, export and reimport over the lifetime of the part, Boeing requires country of origin marking on individual parts unless;

- **The exported part is a product of the United States exported and returned.**
- **The article is incapable of being marked (as defined by U.S. Customs Regulations).**
- **The articles cannot be marked prior to shipment to the United States without injury (as defined by U.S. Customs Regulations).**

Boeing Country of Origin Marking Requirements

- CF 134.26 (a) states that if an imported article is intended to be repacked, the importer shall not obscure or conceal the country of origin marking or else the new container shall be marked to indicate the country of origin.
- If an article subject to these requirements is intended to be repacked in new containers for sale to an ultimate purchaser after its release from Customs custody, or if the port director having custody of the article has reason to believe such article will be repacked after its release, the importer shall certify to the port director that if the importer does the repacking, the new container shall be marked to indicate the country of origin of the article in accordance with the requirements of this part.