

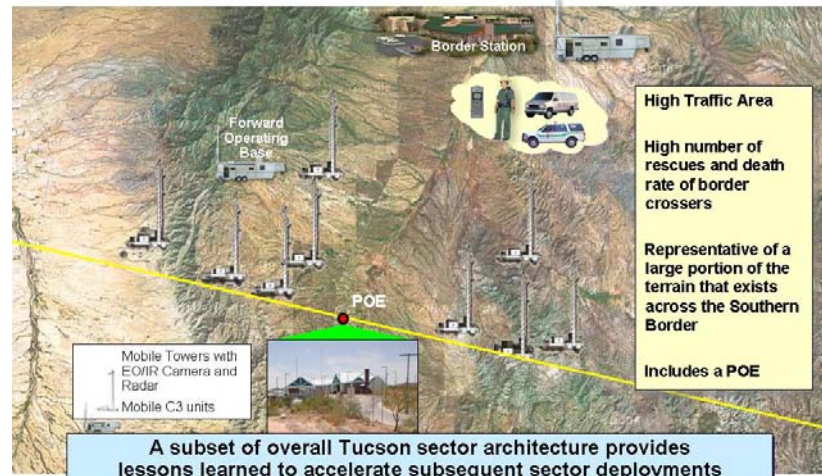
Integrated Defense Systems
P.O. Box 516
St. Louis, MO 63166
www.boeing.com

Project 28 – A Quick Start

SBlnet Project 28

Background:

On October 20, 2006, U.S. Customs and Border Protection issued a Task Order (TO) associated with the SBlnet Indefinite Delivery Indefinite Quantity contract awarded in September 2006 to Boeing Corporation. As part of the TO, dubbed Project 28, The Boeing Company-led team will provide the equipment and services necessary to achieve effective control of a minimum of 28 miles of U.S.-Mexico border west of Nogales (flanking the Sasabe Port Of Entry (POE)).



Value, Contract Type, Period of Performance:

- \$20M Firm Fixed Price

Schedule:

- First tower deployment within P28 area April 2007
- Full Acceptance received February 2008

Boeing's Role:

- As the prime contractor for SBlnet, Boeing is responsible for acquiring, deploying and sustaining technology and tactical infrastructure in support of Customs and Border Protection's border security mission and under the direction and guidance of the CBP SBlnet PMO.

Fast Facts:

- SBlnet will:
 - Deliver the ability to **detect** entries into the U.S. when they occur; **identify** what the entry is; and eventually **classify** its level of threat (who they are, what they are doing, how many, etc.); allowing Border Patrol to effectively and efficiently **respond** to the entry, and; **resolve** the situation with appropriate law enforcement.
 - Provide a highly reliable, available, maintainable, and cost effective solution to strengthen the management, control and security of the border

- using the right mix of proven current and next generation technology, tactical infrastructure, personnel, response capabilities and processes.
- Ensure that CBP mission requirements are met to provide enhanced situational awareness and a faster more measured response to illegal border activity.
 - Deploy a Common Operating Picture (COP), in CBP user vehicles that provides agents with accurate, near real-time knowledge of both CBP assets and intruder locations.
 - Implement a communications system that enables Border Patrol agents to communicate with each other, border stations, sectors and other law enforcement personnel.

Technical Project 28 Specifications:

- 28-miles represent up to the 16.5 miles west and 11.5 miles east of the Sasabe POE
- 9 redeployable sensor towers with associated sensors to improve detection identification and classification
- 2 Command, Control and Communications (C3) units to enable situation awareness
- Retrofit 50 agent vehicles to provide rugged, secure, mounted laptop computers to enable displays of COP data
- 50 satellite phones to improve communications
- 3 Rapid Response Transports to increase the speed of transportation of illegal immigrants from point of capture to detention facilities
- 4 Unattended Ground Systems to provide additional security for the redeployable sensor towers

Project 28 Management/ Roles & Responsibilities:

- The Boeing Company is responsible for the Project 28 project plan; architecture and design; systems engineering; production; integration and testing; laydown and design; deployment; and maintenance and support.
- CBP *SBI_{net}* Program Management Office (PMO), acting as the executive agent on behalf of DHS, will oversee and manage the Boeing-led contractor team.
- CBP has been designated as the DHS executive agent for the *SBI_{net}* program, and has established a Program Management Office to ensure the Government has the adequate oversight of the *SBI_{net}*.
- CBP *SBI_{net}* PMO is responsible for customer/user needs, goals and objectives; requirements; mission engineering; requirements analysis and allocation; operational testing and system acceptance.

Contacts:

Deborah Bosick
Boeing IDS Communications
(703) 872-4505
deborah.d.bosick@boeing.com