



PROTECTING SANTA SUSANA



The former Santa Susana Field Laboratory is located in southeastern Ventura County, California. Santa Susana sits within a vital habitat linkage that connects the Los Padres National Forest to the Santa Monica Mountains and the Pacific Ocean. Significant portions of the property remain undisturbed and are inhabited by mountain lions, red-tailed hawks, bobcats, mule deer and other wildlife.

The site played a critical role in NASA's development and testing of rocket engines that powered virtually every major U.S. space program. Santa Susana was also home to advanced energy research programs focused on nuclear, non-nuclear liquid metals and alternative energy sources,

on behalf of the U.S. Department of Energy. The restoration of the Santa Susana landscape is well underway, with native plants and animals reclaiming much of the 2,850 acres in less than a decade since the Field Laboratory closed.

Past industrial activity at Santa Susana resulted in soil and groundwater contamination. The Boeing Company, NASA and the DOE are cleaning up the property under the direction of the California Department of Toxic Substances Control (DTSC). As DTSC has confirmed repeatedly, the Santa Susana site is safe today for those who visit and work there, and does not pose a threat to people off-site in the surrounding areas. After decades of investigation and

interim cleanups, Boeing has an extensive understanding of the site and what cleanup needs to be done to be protective. The cleanup can be done in a way that protects the community and site visitors, preserves Santa Susana's biological and cultural resources, and benefits wildlife and the community.

Key tenets of the Boeing cleanup:

- Protect human health
- Preserve the site's resources
- Perform cleanup without harmful impacts
- Prevent further delay

SANTA SUSANA IS HOME TO:

ANIMALS



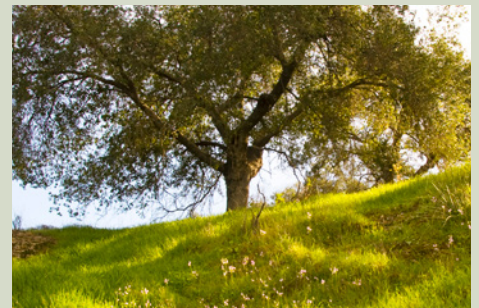
Abundant wildlife—including mountain lions, bobcats, coyotes, deer, hawks and bald and golden eagles—roam the four square miles. Santa Susana lies in the heart of the biggest and most at-risk habitat linkage in Southern California.

CULTURAL SITES



Native American rock shelter caves—some with pre-historic pictographs and petroglyphs—are located throughout the site.

PLANTS



Santa Susana is home to many types of native plants and grasses. Extensive riparian oak woodlands and upland areas provide a natural habitat for many protected plants and animals.



What you need to know about the cleanup process

The DTSC will soon release its draft Environmental Impact Report (EIR) for the Santa Susana cleanup in accordance with the California Environmental Quality Act. The EIR will evaluate the potential impacts of the different alternatives for cleanup on the site's wildlife, vegetation, Native American artifacts and nearby residents. It will also propose a preferred cleanup alternative and required mitigation measures based on this information. The EIR will lay the foundation for the scope and schedule of the soil cleanup and long-term groundwater cleanup and monitoring.

What you need to know about Santa Susana

– Santa Susana is a crucial part of a vital habitat linkage.

- The site is home to more than 130 species of birds and 12 bat species, and is one of the most pollinator-rich properties in Southern California.
- Hundreds of plants and flowers bloom onsite, including rare and protected species like Braunton's milkvetch and Santa Susana tarplant.
- The Santa Ynez band of Chumash Indians have designated Santa Susana as an Indian sacred site that is home to extraordinary Native American pictographs and artifacts.
- A conservation easement held by North American Land Trust permanently preserves nearly 2,400 acres as open space habitat. It ensures there will never be residential or agricultural development.

What you need to know about the Boeing cleanup

- We are committed to completing a cleanup that is fully protective of human health and the environment, consistent with Santa Susana's future as open space habitat.
- This cleanup will reduce the impact on the community caused by truck traffic and schedule delays.
- Consistent with the 2007 Consent Order, our planned cleanup will make our property safe—fully safe for all future users, fully safe for wildlife habitat and fully safe for the neighboring community.

It is important for a cleanup to be chosen that protects the future use of the land as open space habitat.

For more information, please visit: www.protectsantasusana.com #santasusanaopenspace

YOUR VOICE MATTERS

Everyone is invited to submit comments on the draft Environmental Impact Report to the DTSC.

Find more information and a calendar of events at:

www.dtsc-ca.gov/SiteCleanup/Santa_Susana_Field_Lab

Boeing has made significant progress investigating, cleaning up and restoring Santa Susana



38,000+ soil and groundwater samples analyzed



260 monitoring and extraction wells installed



45,000 cubic yards of soil removed or treated



300+ structures dismantled



3 stormwater treatment systems built



1 groundwater treatment system built



900 acres of land restored