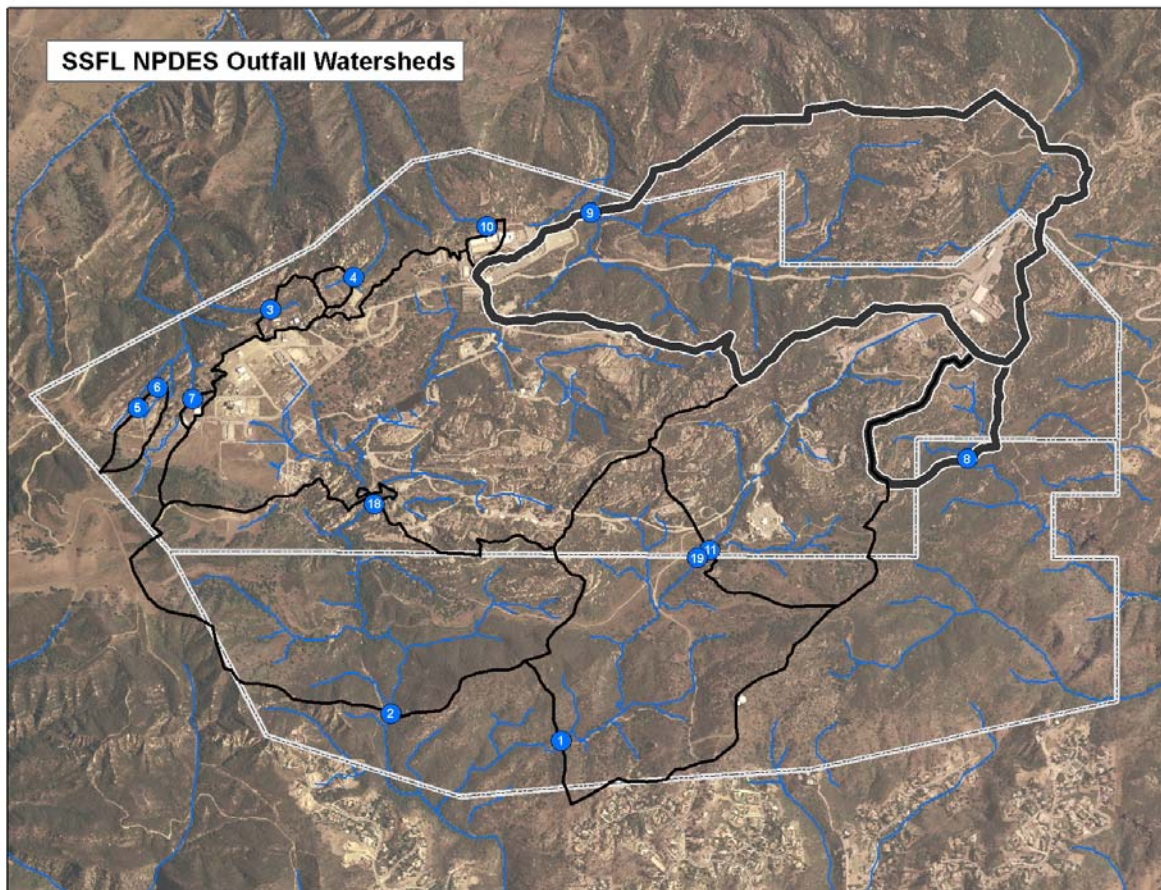


Boeing Santa Susana Field Laboratory (SSFL) NPDES Compliance Program: EXPERT PANEL SELECTION FACT SHEET

The Regional Water Quality Control Board, Los Angeles Region (Regional Board) adopted Cease and Desist Order (CDO) No. R4-2007-0056 on November 1, 2007. This CDO includes requirements for The Boeing Company (Boeing) to evaluate, select, and implement engineered natural treatment systems (ENTS) for stormwater discharges in the areas that drain to Santa Susana Field Laboratory (SSFL) Outfalls 008 and 009 (Figure 1). As part of this process, Boeing is required to assemble an independent panel of experts to provide technical oversight on the proposed ENTS designs.

Figure 1. Outfall 008 and 009 Watersheds (drainage boundaries highlighted)



This fact sheet describes the status of the Expert Panel selection process and plans for the first public outreach event scheduled for January 22, 2008.

For more information, please refer to the Expert Panel Work Plan that was submitted to the Regional Board on December 15, 2007. This Expert Panel Work Plan can be found at:

http://www.boeing.com/aboutus/environment/santa_susana/water_quality.html.

Expert Panel Selection Process

The expert panel selection process began in November 2007 when Boeing compiled a list of potential panelists, each an expert in a field related to stormwater hydrology and/or ENTS design. The list was based on recommendations from Boeing's consultants and Regional Board staff. Interest solicitation letters were mailed to each listed potential panel member on November 16, 2007 requesting that interested panelists respond with a "statement of qualifications" or similar information no later than November 30, 2007.

Upon receiving letters of interest from potential panelists, Geosyntec Consultants, in consultation with Regional Board staff, selected 6 panelists representing various areas of relevant technical expertise to participate on the panel. The proposed panel was submitted to Regional Board staff, which made no additional recommendations. The expert panel is comprised of the following distinguished participants:

Bob Gearheart, Ph.D: Dr. Gearheart is a Professor Emeritus at Humboldt State University. His professional interests have focused on water quality management and hazardous waste management, and more specifically on water treatment through constructed wetlands. Dr. Gearheart is integrally involved in the development of Arcata's Integrated Wetland and Wastewater Treatment Facility and the Arcata Marsh.

Rich Horner, Ph.D: Dr. Horner is a private consultant who has extensive experience working on projects involving ENTS design and performance, NPDES stormwater permitting, and stormwater monitoring. He is a former research professor from the University of Washington's Department of Civil and Environmental Engineering. He is an expert on stormwater management issues, including investigating the sources of pollutants and other causes of aquatic ecological damage, impacts on organisms in waters receiving urban stormwater drainage, and the full range of methods of avoiding or reducing these impacts. He has served and continues to serve as an expert for environmental advocacy organizations including the National Resources Defense Council and Coastkeepers.

Jonathan Jones, P.E., D.WRE: Jonathan Jones is presently the chief executive officer of Wright Water Engineers (WWE) where he has been working for 26 years. He has extensive experience working on projects involving stormwater quantity and quality, floodplain management, surface water hydrology, and watershed modeling. More specifically, he assisted in the development of the International BMP Database and has also been involved in post-fire watershed recovery projects in the arid southwest.

Mike Josselyn, Ph.D: Dr. Josselyn is internationally known for his expertise in wetland ecology and restoration. As a co-founder and president of Wetlands Research Associates (WRA), Dr. Josselyn is principal-in-charge for the firm's wetland restoration and mitigation projects, land use planning studies, federal and state permitting projects, and remedial action plans for wetlands in hazardous waste sites. He has successfully completed major wetland mitigation and restoration projects for

transportation agencies, port authorities, utilities, private developers, and non-profit organizations and is a Professor Emeritus at San Francisco State University.

Bob Pitt, Ph.D, P.E.: Dr. Pitt is a professor of Civil and Environmental Engineering at the University of Alabama and has conducted research for the U.S. EPA, Environment Canada, Ontario Ministry of the Environment, states, and local governments concerning the effects, sources, and control of urban runoff for more than 35 years. More specifically, he has been a member of the technical advisory group for the U.S. EPA's Nationwide Urban Runoff Program (NURP) and has also prepared manuals of practice which contain design procedures and construction specifications for stormwater and erosion control practices.

Mike Stenstrom, Ph.D, P.E.: Dr. Stenstrom is a professor in the Civil and Environmental Engineering Department at University of California, Los Angeles. His research interests center around process development for water and wastewater treatment systems, including mathematical modeling and optimization. More recently he has applied these mathematical techniques to urban runoff and stormwater issues to develop models to predict pollutant emissions from non-point sources and to develop new and evaluate existing non-point source pollutant controls.

Public Outreach Components

At past Regional Board hearings, community members and stakeholder groups have expressed interest in the quality of stormwater discharges from the SSFL. In order to address these concerns, project status reports and documents submitted to the Regional Board will be posted on the Boeing project website after major project milestones. Also, the community will be invited to participate in meetings led by Geosyntec with Boeing team members and members of the Expert Panel to gather public input on the Expert Panel process and the proposed ENTS plans. In this way, the public can actively participate in the project by providing input at various stages throughout the ENTS planning process, including input that the Expert Panel can consider in reviewing and approving the proposed ENTS designs.

The following public meetings are tentatively scheduled at this time.

Purpose	Approximate Date
Introduce Expert Panel to stakeholder group, present initial ENTS alternatives, stakeholder Q&A	January 22, 2008
Present conceptual ENTS design status and Expert Panel design storm recommendations, stakeholder Q&A	March, 2008
Present conceptual ENTS designs and Expert Panel ENTS design recommendations, stakeholder Q&A	April, 2008
Present ENTS implementation status	September, 2008
Present initial (year 1) ENTS performance monitoring results	June, 2009

Next Steps

The Expert Panel will be provided background information on the project, including the NPDES permit for discharge of stormwater, stormwater discharge monitoring reports, draft conceptual ENTS designs, and hydrologic data and modeling results for the site. The Panel will review this information and meet twice in January to discuss the project and conduct a site visit. Geosyntec will facilitate these meetings and coordinate with the Expert Panel members to arrange future meetings and respond to requests for additional information.

Over the duration of the Expert Panel process, the Panel will be responsible for providing technical review and oversight of the site specific design storm, the proposed draft ENTS designs, the construction of the final ENTS designs, and the development of an ENTS performance monitoring plan. The Panel will meet on a regularly scheduled basis to review and discuss information on the project as well as develop recommendations for submittal to the Regional Board.

The first public outreach meeting to introduce the Expert Panel and the initial ENTS concepts will be held on **January 22, 2007 from 7 to 9 pm in the Valley Ballroom at the Grand Vista Hotel at 999 Enchanted Way in Simi Valley, California**. For directions to the hotel call 805-583-2000 or check their website at:

<http://www.grandvistasimi.com/location.htm>.

For more information on the purpose, tasks, and/or schedule for the SSFL Stormwater Expert Panel, contact Blythe Jameson at 818-466-8793 or check the Boeing project website at:

http://www.boeing.com/aboutus/environment/santa_susana/water_quality.html.