

Outfall 008 Preliminary ISRA Evaluation Areas

Base Map Legend

-  Administrative Area Boundary
-  RFI Site Boundary
-  Existing Building or Structure
-  Previously Excavated Area
-  Preliminary ISRA Evaluation Area
-  Surface Water Drainage
-  Surface Water Divide
-  Outfall Water Divide
-  NPDES Outfall
-  Dirt Road
-  Paved Road
-  Elevation Contour
-  Bedrock Outcrop





ISRA Constituents of Concern

Copper, Lead, Dioxins

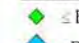


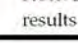
2005 Background Comparison Concentrations

Copper: 29 mg/kg
 Lead: 34 mg/kg
 Dioxins (TCDD TEQ): 0.87 pg/g

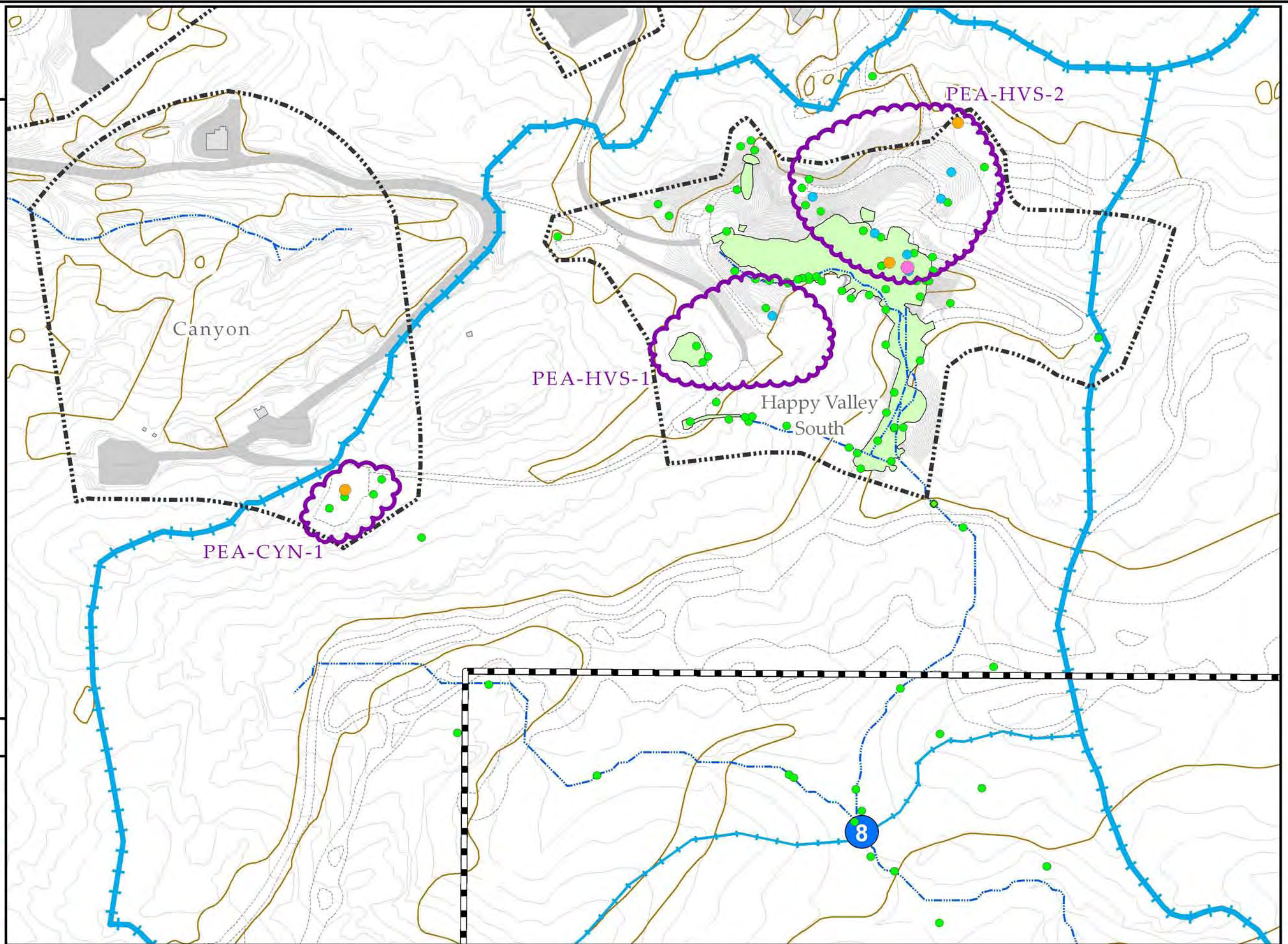
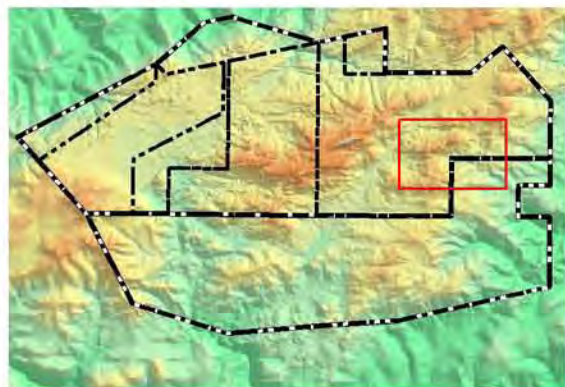
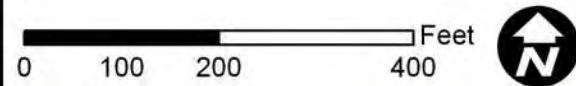
Copper and/or Lead Sample Location (<2 feet bgs)

-  ≤ Background (BG)
-  >BG and <2x BG
-  ≥2x BG and <10x BG
-  ≥10x BG and <100x BG

Dioxin Sample Location (<2 feet bgs)




-  ≤ Background (BG)
-  >BG and <2x BG
-  ≥2x BG and <10x BG
-  ≥10x BG and <100x BG

Note: Dioxin represents the sum of 17 dioxin/furan congener results adjusted for toxicity, normalized to 2,3,7,8-TCDD TEQ



Eastern Outfall 009 Preliminary ISRA Evaluation Areas






Base Map Legend

-  Administrative Area Boundary
-  RFI Site Boundary
-  Existing Building or Structure
-  Previously Excavated Area
-  Preliminary ISRA Evaluation Area
-  Surface Water Drainage
-  Surface Water Divide
-  NPDES Outfall
-  Dirt Road
-  Paved Road
-  Elevation Contour
-  Bedrock Outcrop

ISRA Constituents of Concern





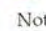
Cadmium, Copper, Lead, Mercury, Dioxin

2005 Background Comparison Dioxin Sample Location (<2 feet bgs)

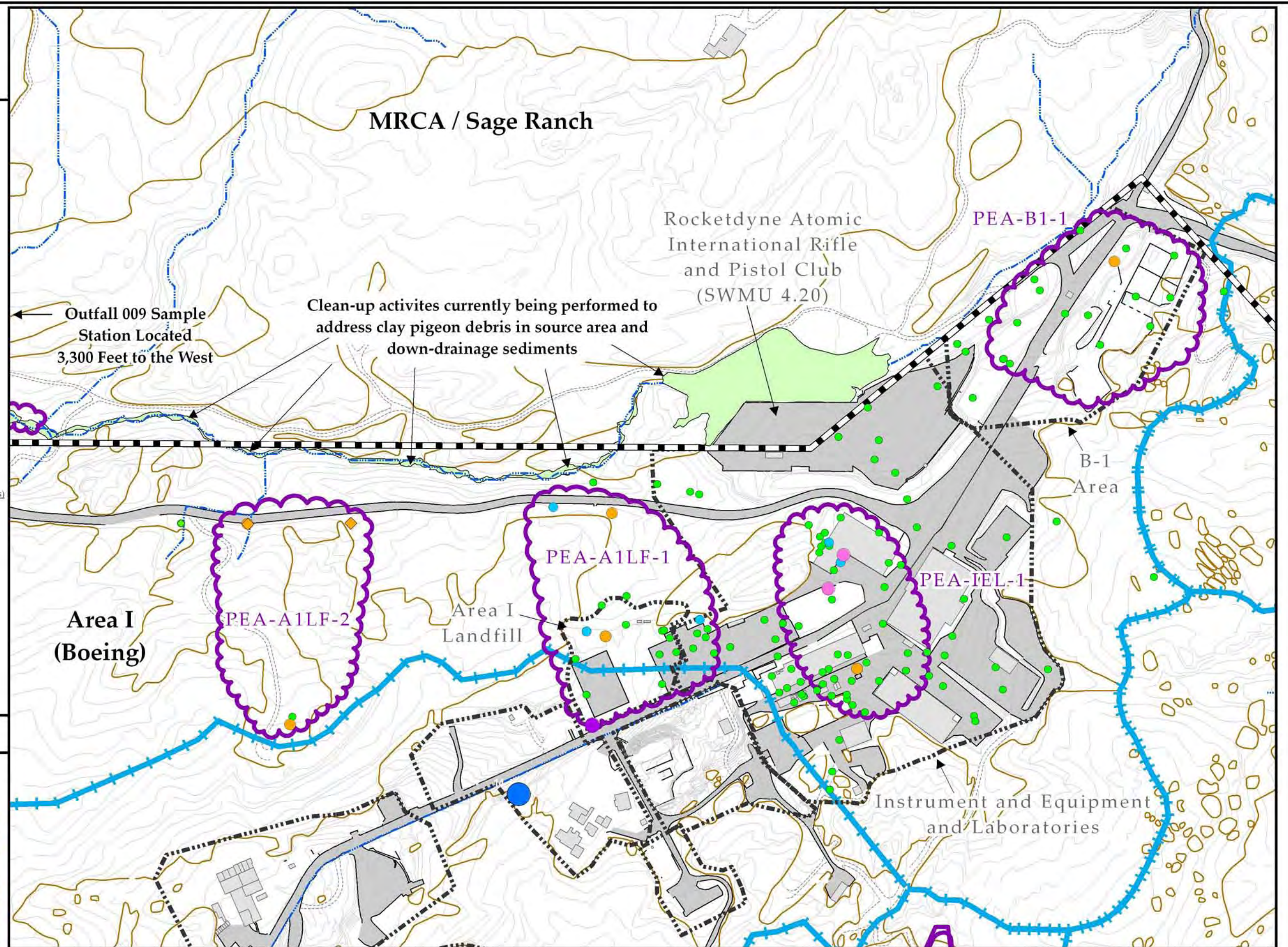
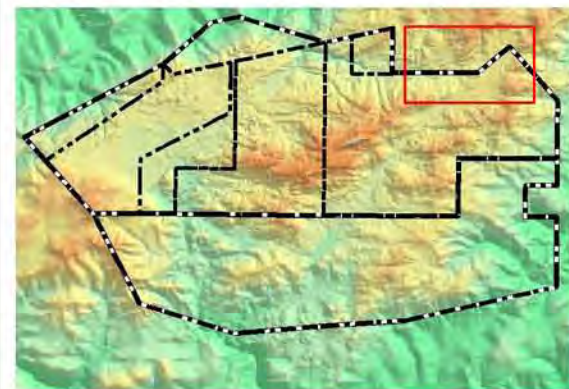
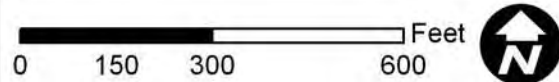
Concentrations	Dioxin Sample Location (<2 feet bgs)
Cadmium: 1 mg/kg	 ≤ Background (BG)
Copper: 29 mg/kg	 >BG and <2x BG
Lead: 34 mg/kg	 ≥2x BG and <10x BG
Dioxins (TCDD TEQ): 0.87 pg/g	 ≥10x BG and <100x BG
Mercury: 0.09 mg/kg	 ≥100x

Cadmium, Copper, Lead, and/or Mercury

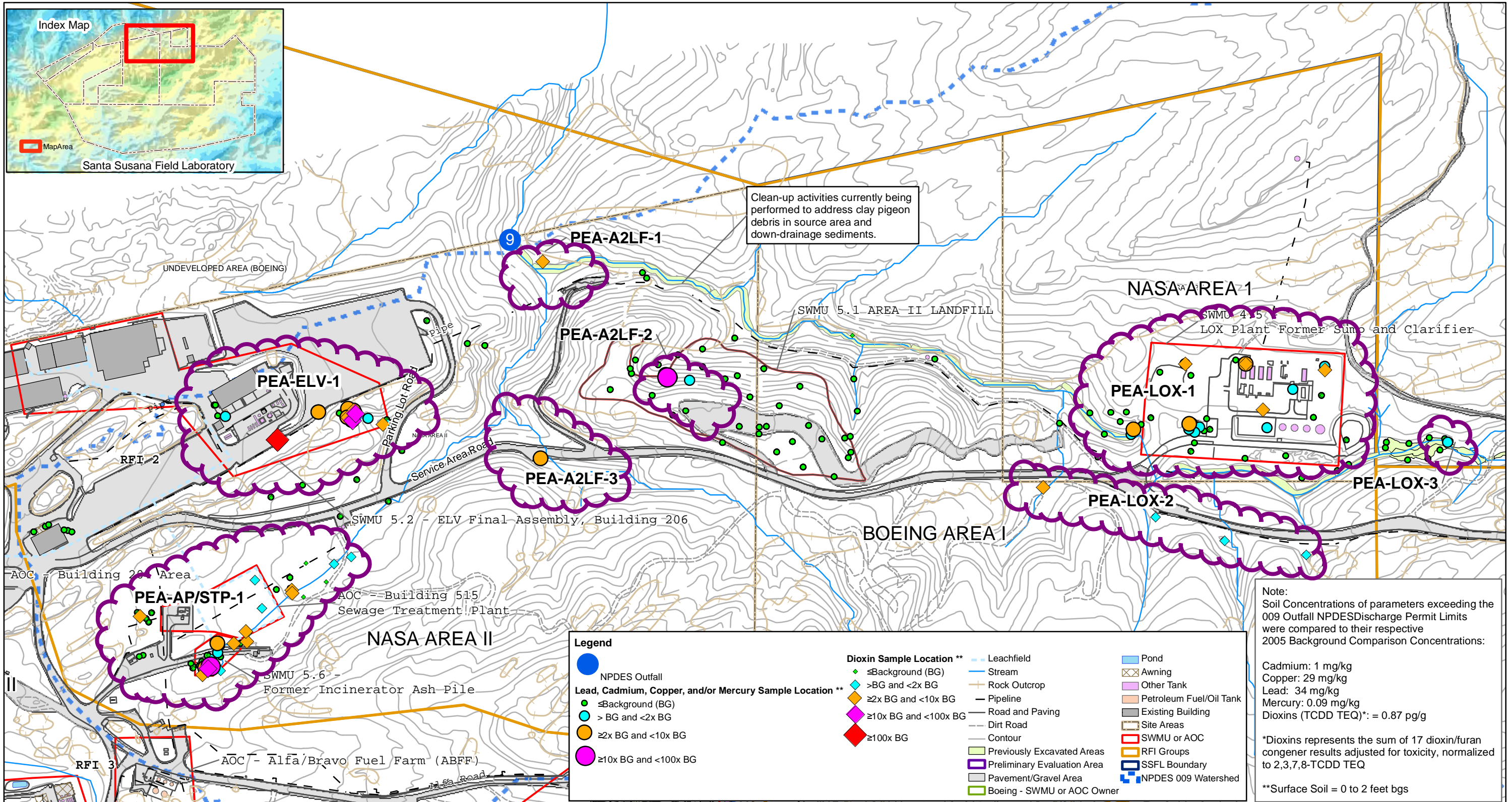
Sample Location (<2 feet bgs)

 ≤ Background (BG)
 >BG and <2x BG
 ≥2x BG and <10x BG
 ≥10x BG and <100x BG
 ≥100x

Note: Dioxin represents the sum of 17 dioxin/furan congener results adjusted for toxicity, normalized to 2,3,7,8-TCDD TEQ



S A N T A S U S A N A F I E L D L A B O R A T O R Y



28-APR-2009
 Drawn By:
 Alberta Cooley
 D. Scott Stevens

Figure 1-7
 Western Outfall 009
 Preliminary ISRA Evaluation Areas
 Santa Susana Field Laboratory

Outfall 008 Sample Locations ISRA PEAs

Base Map Legend

- Administrative Area Boundary
- RFI Site Boundary
- Existing Building or Structure
- Previously Excavated Area
- Preliminary ISRA Evaluation Area
- Surface Water Drainage
- Surface Water Divide
- Outfall Water Divide
- NPDES Outfall
- Dirt Road
- Paved Road
- Elevation Contour
- Bedrock Outcrop
- 2009 Data Gap Location
- Proposed Sample Location / Sample Results Pending

ISRA Constituents of Concern

Copper, Lead, Dioxins

2005 Background Comparison Concentrations

Copper: 29 mg/kg
Lead: 34 mg/kg
Dioxins (TCDD TEQ): 0.87 pg/g

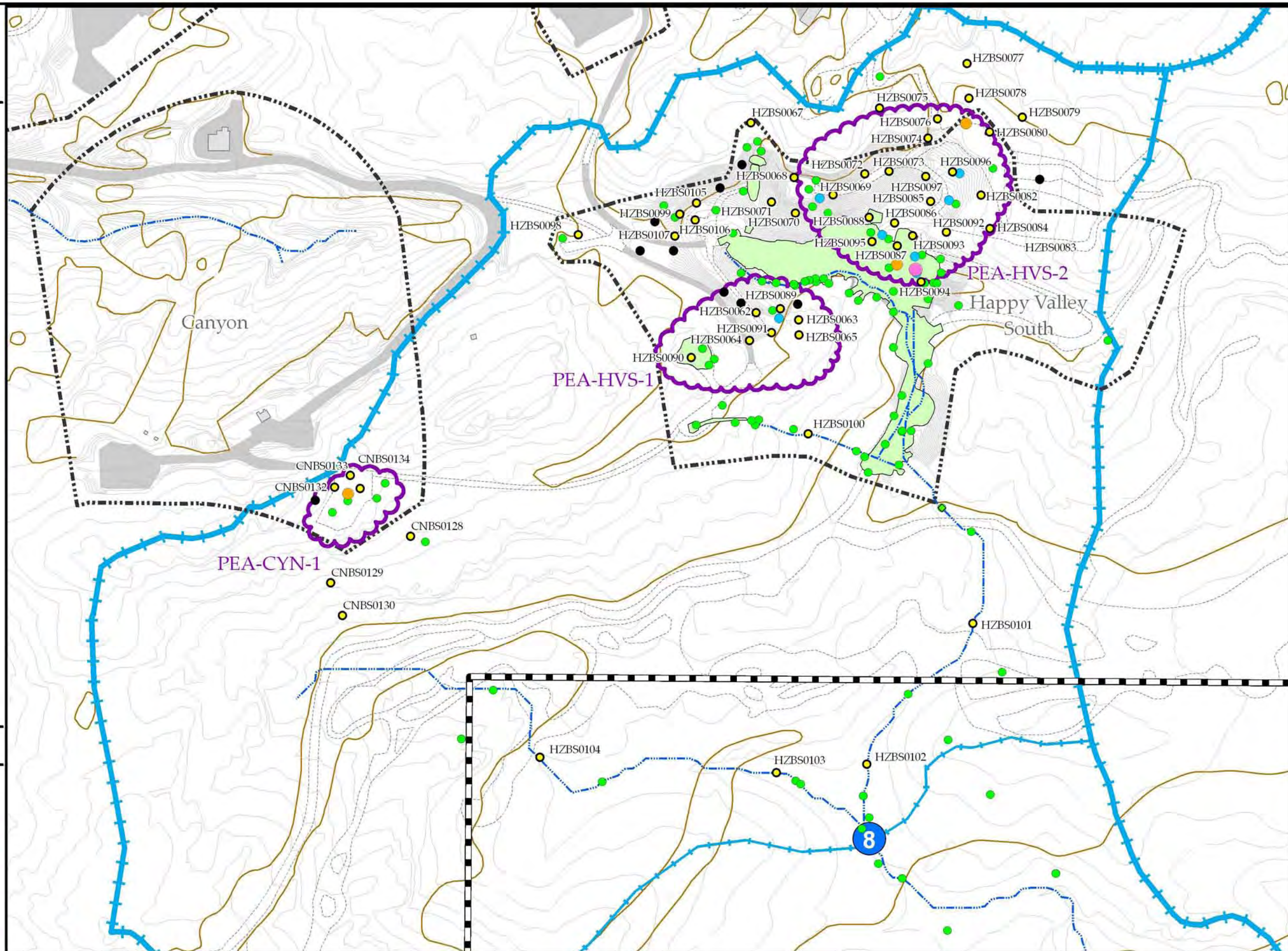
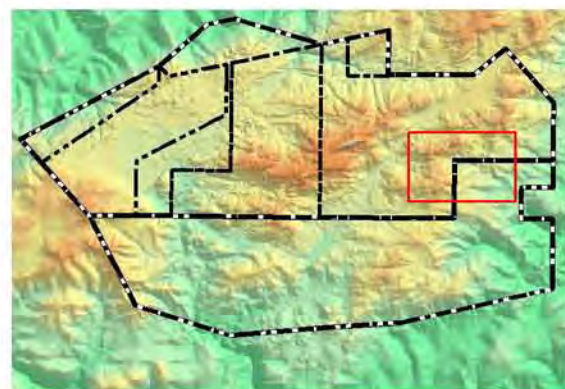
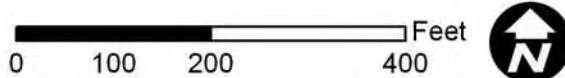
Copper and/or Lead Sample Location (<2 feet bgs)

- ≤ Background (BG)
- >BG and <2x BG
- ≥2x BG and <10x BG
- ≥10x BG and <100x BG

Dioxin Sample Location (<2 feet bgs)

- ≤ Background (BG)
- >BG and <2x BG
- ≥2x BG and <10x BG
- ≥10x BG and <100x BG
- ≥100x BG











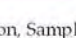

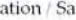
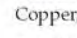
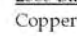
Note: Dioxin represents the sum of 17 dioxin/furan congener results adjusted for toxicity, normalized to 2,3,7,8-TCDD TEQ



S A N T A S U S A N A F I E L D L A B O R A T O R Y

Outfall 008 Refined ISRA PEAs and ISRA Areas

Base Map Legend

-  Administrative Area Boundary
-  RFI Site Boundary
-  Existing Building or Structure
-  Previously Excavated Area
-  Preliminary ISRA Evaluation Area
-  Surface Water Drainage
-  Surface Water Divide
-  Outfall Water Divide
-  NPDES Outfall
-  Dirt Road
-  Paved Road
-  Elevation Contour
-  Bedrock Outcrop
-  2009 Data Gap Location, Sample(s) Not Analyzed
-  Proposed Sample Location / Sample Results Pending

ISRA Constituents of Concern

Copper, Lead, Dioxins





2005 Background Comparison Concentrations

Copper: 29 mg/kg






Lead: 34 mg/kg

Dioxins (TCDD TEQ): 0.87 pg/g

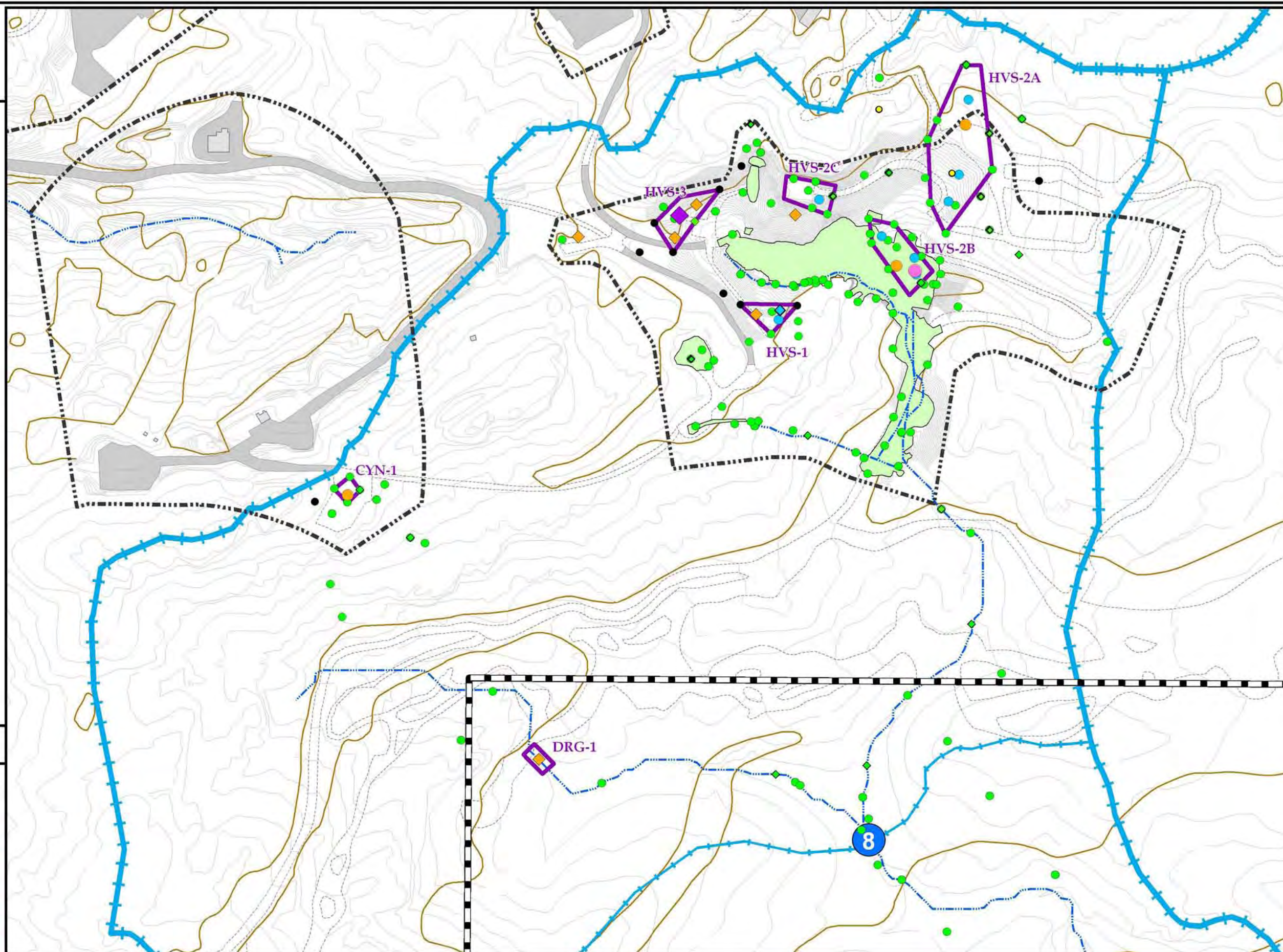
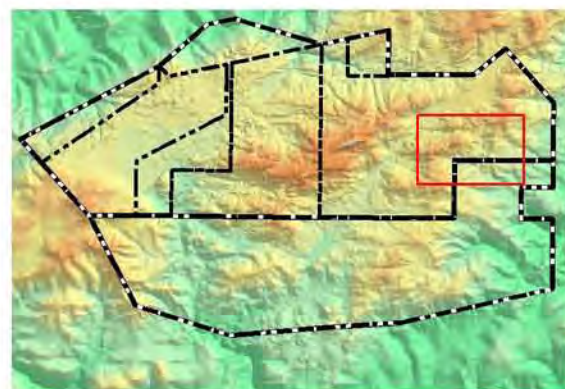
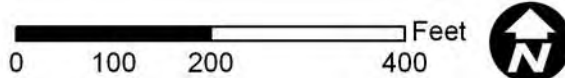
Copper and/or Lead Sample Location (<2 feet bgs)

-  ≤ Background (BG)
-  >BG and <2x BG
-  ≥2x BG and <10x BG
-  ≥10x BG and <100x BG

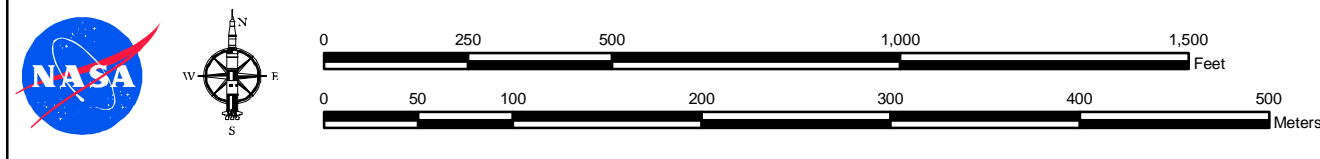
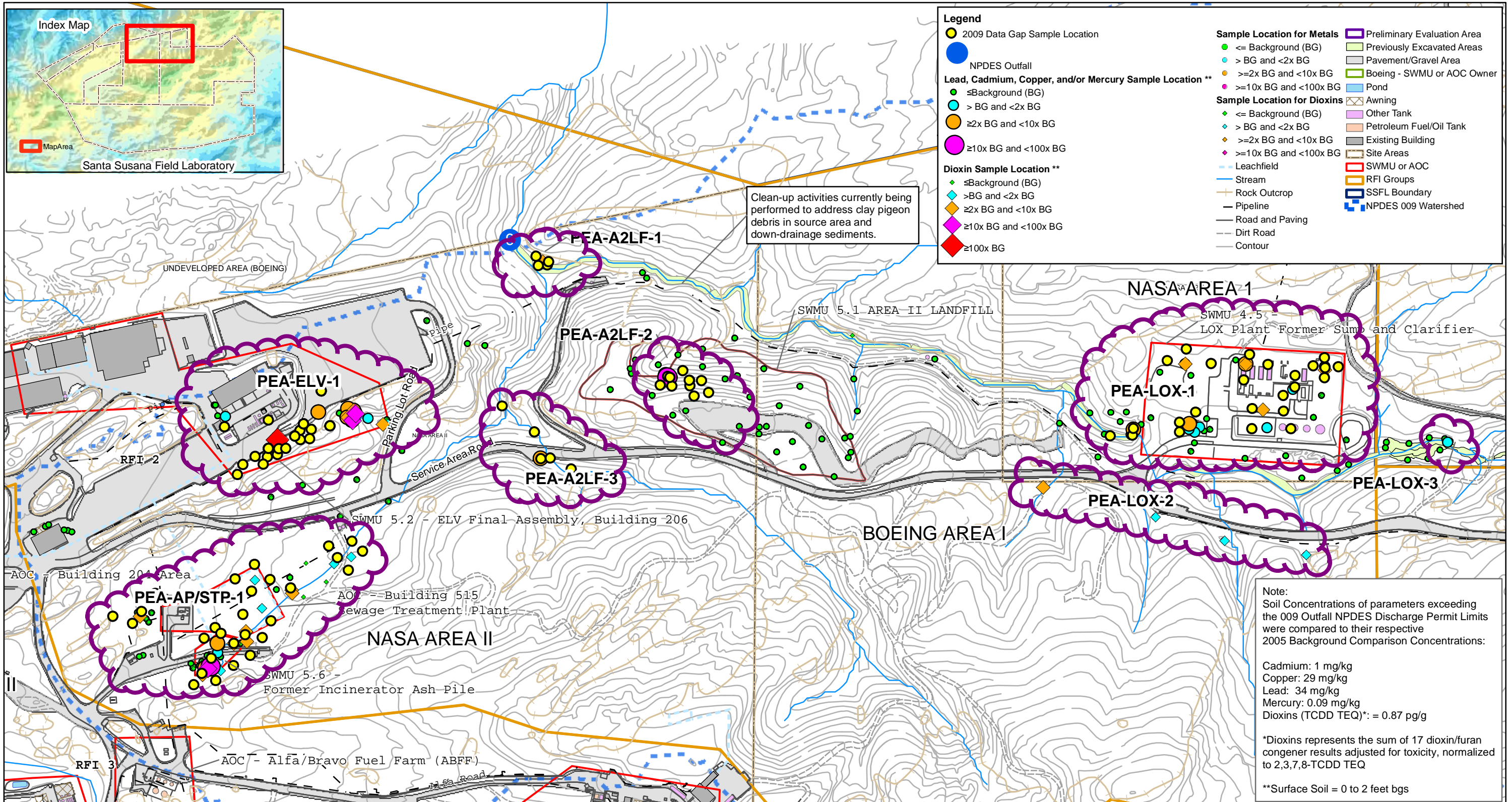
Dioxin Sample Location (<2 feet bgs)

-  ≤ Background (BG)
-  >BG and <2x BG
-  ≥2x BG and <10x BG
-  ≥10x BG and <100x BG
-  ≥100x BG

Note: Dioxin represents the sum of 17 dioxin/furan congener results adjusted for toxicity; normalized to 2,3,7,8-TCDD TEQ

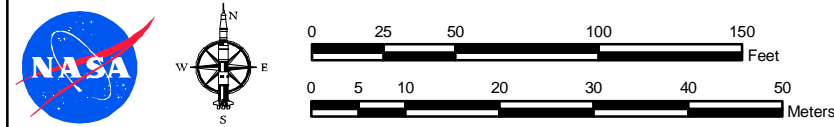
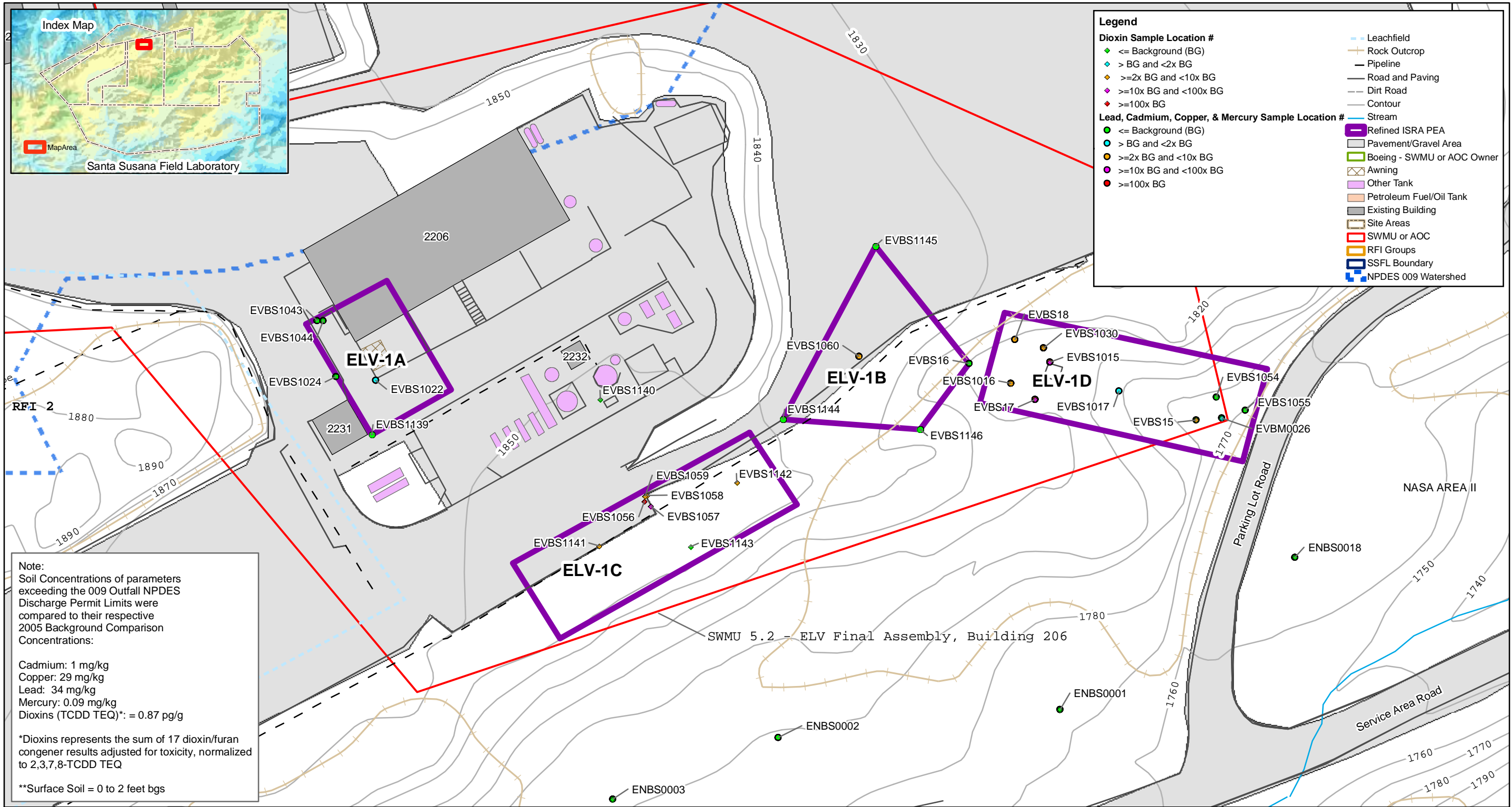


S A N T A S U S A N A F I E L D L A B O R A T O R Y



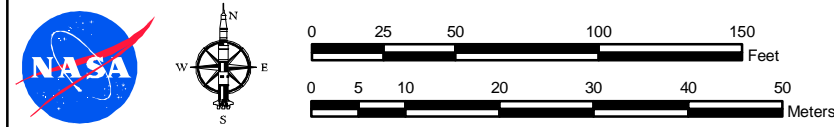
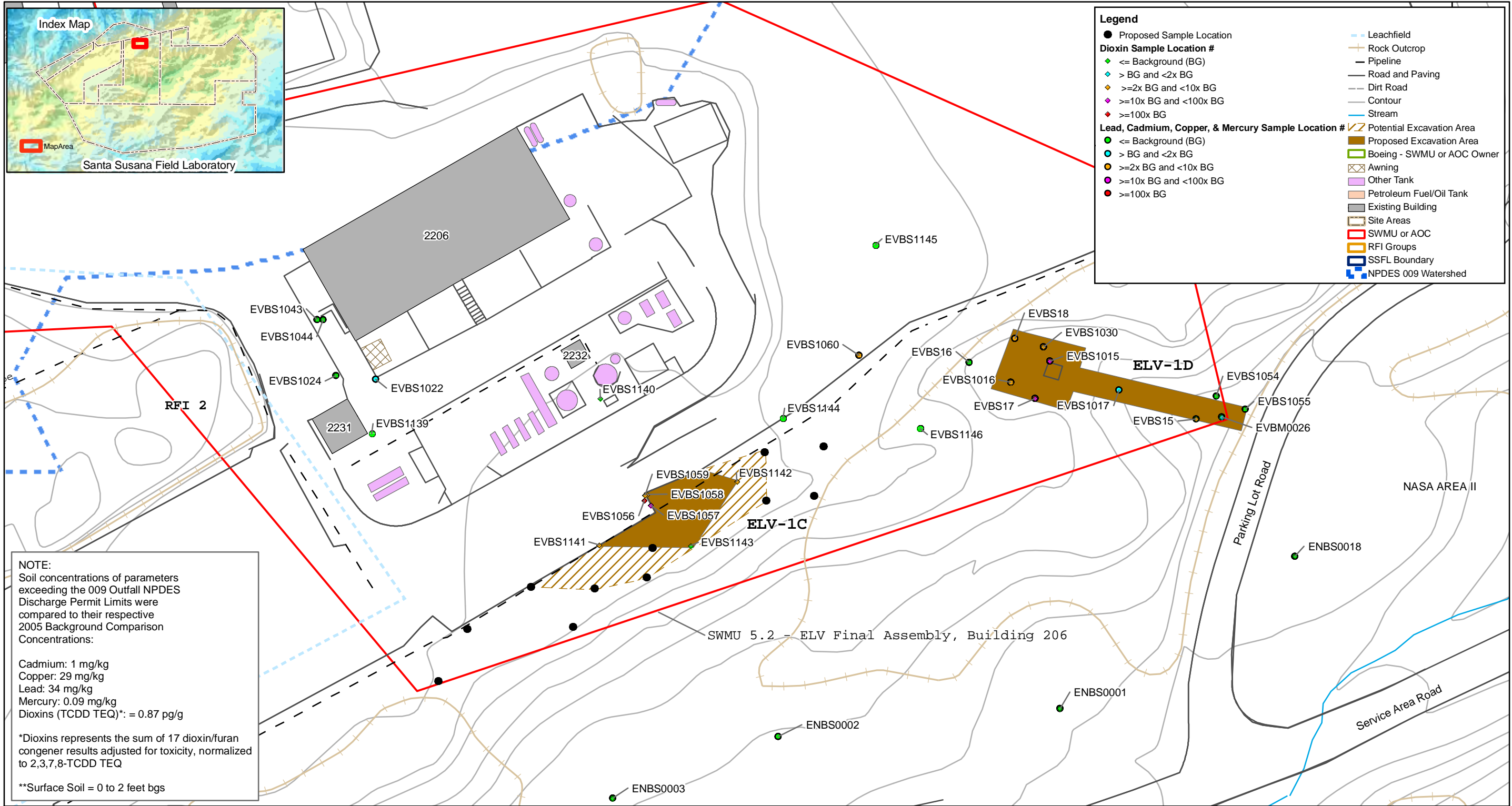
28-APR-2009
Drawn By:
Alberta Cooley
D. Scott Stevens

Figure 4-1
Sample Locations
Western Outfall 009
Preliminary ISRA Evaluation Areas
Santa Susana Field Laboratory



28-APR-2009
Drawn By:
Alberta Cooley
D. Scott Stevens

Figure 4-2
Refined Preliminary ISRA Evaluation Areas
ELV-1 PEA, Outfall 009
Santa Susana Field Laboratory

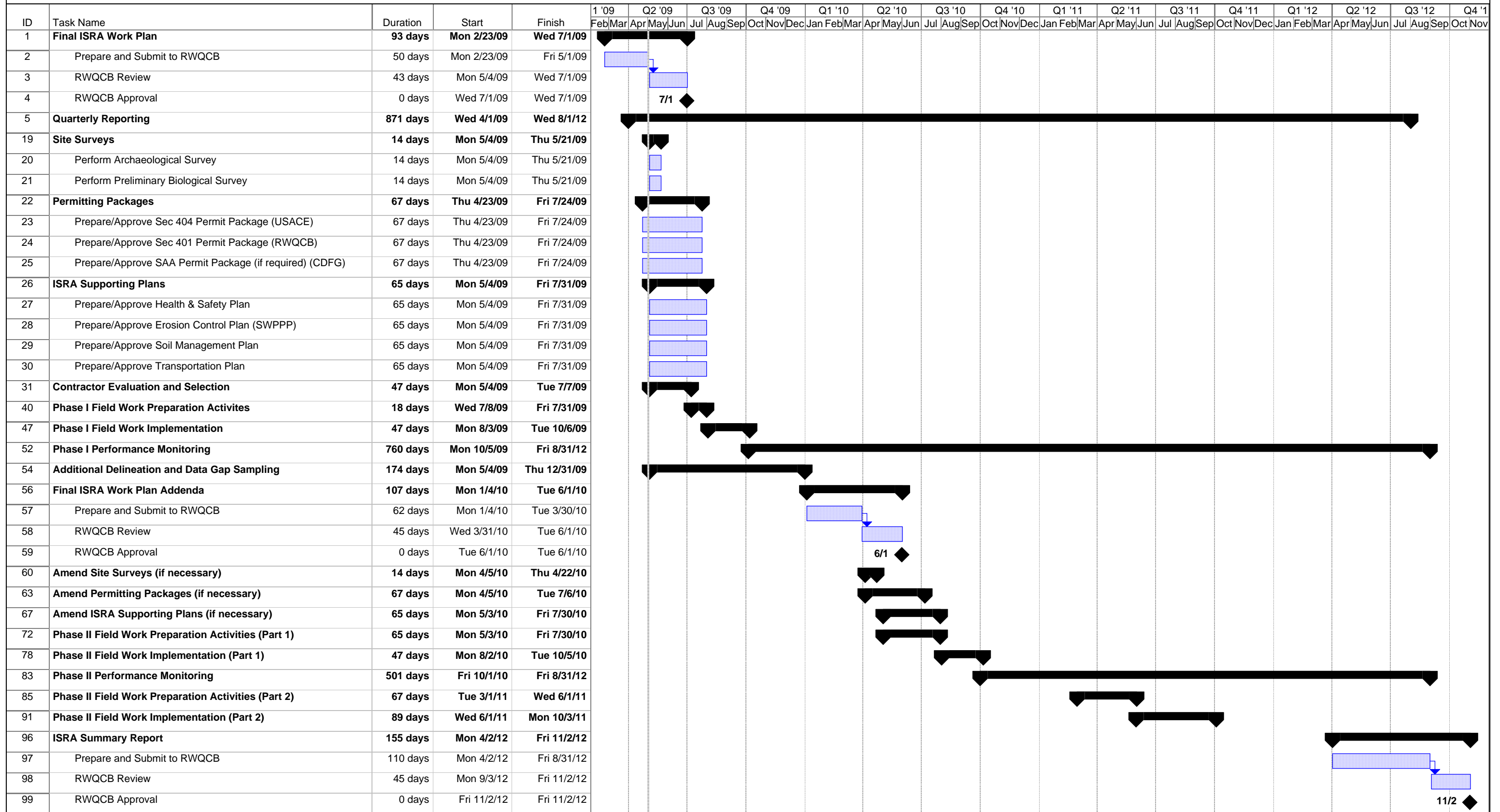


28-APR-2009
Drawn By:
Alberta Cooley
D. Scott Stevens

Figure 4-3
ISRA Evaluation Areas
ELV-1, Outfall 009
Santa Susana Field Laboratory

**Figure 7-1
ISRA Implementation Schedule**

Figure 7-1



Project: ISRA Project Schedule Draft Date: Fri 5/1/09	Task	Progress	Summary	External Tasks	Deadline
	Split	Milestone	Project Summary	External Milestone	