



The Boeing Company
Santa Susana Field Laboratory
5800 Woolsey Canyon Road
Canoga Park, CA 91304-1148

Via FedEx

December 22, 2010
In reply refer to SHEA-110699

Regional Water Quality Control Board
Los Angeles Region
320 West 4th Street, Suite 200
Los Angeles, CA 90013

Attention: Mr. Peter Raftery

Subject: December 2010 Quarterly Progress Report for September 16, 2010 through
December 19, 2010 Activity
Final Interim Source Removal Action (ISRA) Work Plan Submitted in Response
to California Water Code Section 13304 Order (NPDES NO. CA0001309, CI NO.
6027, SCP NO. 1111, SITE ID NO. 2040109)

Dear Mr. Raftery:

In the Final ISRA Work Plan, Boeing and NASA proposed to provide the Los Angeles Regional Water Quality Control Board (RWQCB) with quarterly progress reports until construction field work is complete (target spring 2012). This Quarterly Progress Report is submitted for the fourth quarter 2010. This report summarizes ISRA activities performed during the period of September 16, 2010 through December 19, 2010.

ISRA activities at the SSFL are being performed pursuant to a California Water Code Section 13304 Cleanup and Abatement Order (CAO) issued by RWQCB dated December 3, 2008. The CAO was issued by the RWQCB in order to achieve compliance with the Waste Discharge Requirements (WDR) for Outfalls 008 and 009 contained in Order No. R4 2004-0111, as amended by Orders No. R4-2006-0008, R4 2006 0036, and R4 2007-0055. The Final ISRA Work Plan was prepared and submitted to the RWQCB on May 1, 2009.

Per the RWQCB's request, Boeing provides monthly progress reports on the ISRA activities to the RWQCB Executive Officer. This quarterly progress report is a compilation of the monthly progress reports for the period of September 16, 2010 through December 19, 2010, which are attached to provide the complete list of ISRA activities performed during the period covered by this quarterly report.

The ISRA Quarterly Reports are posted on the ISRA website at:

http://www.boeing.com/aboutus/environment/santa_susana/isra.html



SHEA-110699

Page 2

If you have any questions or require anything further, please contact Lori Blair at 818-466-8741.

Sincerely,

A handwritten signature in black ink, appearing to read 'Tom Gallacher', with a long horizontal line extending to the right.

Tom Gallacher
Director
Santa Susana Field Laboratory
Environment, Health, and Safety

Attachments:

October 2010 Monthly Progress Report (September 16 – October 15, 2010)
November 2010 Monthly Progress Report (October 16 – November 22, 2010)
December 2010 Monthly Progress Report (November 23 – December 19, 2010)

cc: Ms. Cassandra Owens, RWQCB
Mr. Allen Elliott, NASA,
Mr. Mark Malinowski, DTSC
Mr. Buck King, DTSC



The Boeing Company

5800 Woolsey Canyon
Road
Canoga Park, CA 91304-
1148

Date: 10/15/2010

No.: SHEA-110463

To: Sam Unger
Executive Officer
LA Regional Water Quality Control
Board

From: Tom Gallacher
Director, Santa Susana Field Laboratory
Environment, Health & Safety

Subject: October 2010 Monthly Progress Report for September 16, 2010 - October 15, 2010 Activity
California Water Code Section 13304 Interim Source Removal Action Order (ISRA)
(NPDES No. CA0001309, CI No. 6027, SCP NO. 1111, Site ID No. 2040109)

Per the Regional Water Board's request, Boeing, on behalf of Boeing and NASA, is providing the following Monthly Progress Report on the Interim Source Removal Action (ISRA) activities for the period of September 16, 2010 to October 15, 2010. In addition, a 30 day Look-Ahead is also provided.

Weekly team meetings have been held to track the ISRA activities since April 16, 2009. During this reporting period, the meeting participants have consisted of RWQCB staff, DTSC staff, Ventura County Staff, Storm Water Expert Panel Members, Boeing, and NASA. For the period from mid-September to mid-October, the primary activities have been continuing excavation activities at 2010 ISRA areas on Boeing property and beginning excavation activities at 2010 ISRA areas on NASA property, collecting confirmation soil samples at ISRA areas B1-2 and CTLI-1A, collecting waste characterization soil samples at 2011 ISRA areas on NASA property, and continuing offsite transportation of waste soils from 2010 ISRA areas on Boeing property. In addition, inspections of BMPs at 2009 and 2010 ISRA areas were conducted per the ISRA SWPPP. BMPs were implemented prior to the October 6, 2010 rain event at 2009 and 2010 ISRA areas, and performance monitoring was performed at 2009 ISRA areas during the rain event. Routine inspections of the field work are being conducted by Ventura County and RWQCB staff. DTSC staff will be on site when possible.

In addition, Boeing, working with the Storm Water Expert Panel and NASA, has prepared the Outfall 008 and 009 BMP work plan to be submitted to the RWQCB on October 15, 2010 per the NPDES permit requirement.

Completed Tasks - September 16, 2010 to October 15, 2010

- September 16, 2010 - October 1, 2010 - Removed pipes encountered during excavation at ISRA area B1-2, completed planned excavation at ISRA area B1-2, and completed additional excavation at ISRA area B1-1D. Collected confirmation samples, including RWQCB splits, from ISRA areas B1-2 and CTLI-1A.
- September 22, 2010 - During teleconference with RWQCB and DTSC, reviewed confirmation sample results for ISRA areas B1-1A, B1-1B, B1-1C, B1-1D, and IEL-1 with RWQCB, discussed additional excavation areas at ISRA areas B1-1D and CTLI-1A, and presented the confirmation sampling plan for ISRA area B1-2.

- September 23, 2010 – Received approval letter from RWQCB for use of Outfall 009 soil borrow area.
- September 28, 2010 – October 1, 2010 – Conducted preparation activities for implementation at AP/STP ISRA areas (NASA property), including final excavation staking, utilities survey, pre-field biological survey, and BMP installation.
- September 30, 2010 – October 1, 2010 – Inspected BMPs at 2009 and 2010 ISRA areas during the non-rainy season (biweekly), per the ISRA SWPPP.
- October 4, 2010 – Conducted pre-field site walk at ISRA areas AP/STP-1A, AP/STP-1D, and AP/STP-1F (NASA property).
- October 4 – 11, 2010 – Performed vegetation clearance at ISRA areas AP/STP-1A, AP/STP-1D, and AP/STP-1F (NASA property).
- October 5 – 15 2010 – Completed planned excavation at ISRA areas AP/STP-1D and AP/STP-1F; planned excavation is ongoing at ISRA area AP/STP-1A.
- October 5, 2010 – Ventura County, RWQCB, and members of the public on-site to inspect excavation activities.
- October 5, 2010 – Performed pre-rain BMP inspections at 2009 and 2010 ISRA areas and installed BMPs, including covering 2010 ISRA areas with plastic, per the ISRA SWPPP.
- October 6, 2010 – During rain event, performed BMP inspections at 2009 and 2010 ISRA areas per the ISRA SWPPP, and conducted performance monitoring at 2009 ISRA areas.
- October 6, 2010 – During teleconference with RWQCB and DTSC, discussed confirmation sample results for ISRA areas B1-1A, B1-1B, B1-1C, CTLI-1B, and IEL-1.
- October 7, 2010 – Conducted post-rain event BMP inspections at 2009 and 2010 ISRA areas per the ISRA SWPPP.
- October 8 – 14, 2010 – Collected waste characterization samples at 2011 ISRA areas LOX-1 and A2LF-2 (NASA property).
- October 11, 2010 – During teleconference with RWQCB and DTSC, discussed confirmation sample results and received completion approval for ISRA areas B1-1A, B1-1B, B1-1C, CTLI-1B, and IEL-1.
- October 13, 2010 – During teleconference with RWQCB and DTSC, discussed confirmation sampling plan for AP/STP-1A, AP/STP-1D, and AP/STP-1F (NASA property).
- October 13-14, 2010 – Inspected BMPs at 2009 and 2010 ISRA areas during the rainy season (weekly), per the ISRA SWPPP.
- October 15, 2010 – Submit Outfall 008 and 009 BMP Work Plan to RWQCB.
- As of October 13, 2010 – In total, ~4,993 cy of soil have been excavated, ~200 confirmation samples have been collected, and ~190 truckloads of non-hazardous soil delivered to offsite disposal facilities (McKittrick and Lancaster).



ISRA Areas B1-1D (foreground) and B1-2 (background) covered with plastic in preparation for rain event.



Excavating soil at AP/STP-1F using hand tools.

30-Day Look ahead - through November 15, 2010

- Boeing - Perform ground-based topographic survey of completed excavations at ISRA areas B1-1A, B1-1B, B1-1C, B1-1D, CTLI-1B, and IEL-1, and then backfill and restore.
- Boeing - Review confirmation sample results for ISRA areas CTLI-1A and B1-2 with RWQCB and DTSC (Boeing property).
- Boeing - Conduct additional excavation and confirmation sampling at B1-2 (Boeing property).
- Boeing - Collect confirmation soil samples at ISRA areas AP/STP-1A, AP/STP-1D, and AP/STP-1F (NASA property).
- Boeing/NASA - Discuss confirmation sample results for ISRA areas AP/STP-1A, AP/STP-1D, and AP/STP-1F with RWQCB.
- Storm Water Expert Panel - Develop restoration plan for 2010 ISRA areas.
- Boeing - Prepare 2010 Addendum to the Performance Monitoring Sampling and Analysis Plan for 2010 ISRA areas.
- Boeing/NASA - Continue BMP inspections at the 2009 and 2010 ISRA areas per the ISRA SWPPP, and obtain performance monitoring samples per the Performance Monitoring Plan during rain events.

Approved By:

Thomas D. Galacher
Director, Santa Susana Field Laboratory
Environment, Health and Safety

Distribution:

Mr. Peter Raftery, RWQCB

Ms. Cassandra Owens, RWQCB

Mr. Buck King, DTSC

Mr. Allen Elliott, NASA



The Boeing Company

5800 Woolsey Canyon Road
Canoga Park, CA 91304-1148

Date: 11/24/2010 No.: SHEA-110606

To: Sam Unger
Executive Officer
LA Regional Water Quality Control
Board

From: Tom Gallacher
Director
Santa Susana
Environmental, Health & Safety

Subject: November 2010 Monthly Progress Report for October 16, 2010 - November 22, 2010 Activity
California Water Code Section 13304 Interim Source Removal Action Order (ISRA)
(NPDES No. CA0001309, CI No. 6027, SCP NO. 1111, Site ID No. 2040109)

Per the Regional Water Board's request, Boeing, on behalf of Boeing and NASA, is providing the following Monthly Progress Report on the Interim Source Removal Action (ISRA) activities for the period of October 16, 2010 to November 22, 2010. In addition, a 30 day Look-Ahead is also provided.

Weekly team meetings have been held to track the ISRA activities since April 16, 2009. During this reporting period, the meeting participants have consisted of RWQCB staff, DTSC staff, Storm Water Expert Panel Members, Boeing, and NASA. For the period from mid-October to mid-November, the primary activities associated with 2010 ISRA areas on Boeing and NASA property have been continuing excavation activities, collecting confirmation soil samples, beginning site restoration activities, and continuing offsite transportation of waste soils. In addition, inspections of BMPs were conducted at 2009 and 2010 ISRA areas per the ISRA SWPPP. BMPs were implemented at 2009 and 2010 ISRA areas prior to rain events and performance monitoring was performed at 2009 ISRA areas during rain events. Routine inspections of the field work are being conducted by Ventura County and RWQCB staff. DTSC staff will be on site when possible.

As identified in the NPDES Permit (Order R4-2010-0090) adopted by the RWQCB on June 3, 2010, the RWQCB required Boeing to submit a BMP Plan for the Outfalls 008 and 009 watersheds. With input from the Storm Water Expert Panel, NASA and Boeing submitted the BMP Plan on October 14, 2010 and posted the plan on the ISRA website. As identified in the plan, Boeing with support from the Expert Panel is implementing BMPs, identifying additional data needs, and reviewing the ISRA process. A site visit of these watersheds is planned for December 1, 2010 with the Expert Panel. Accomplishments and upcoming actions are listed below.

Completed Tasks – October 16, 2010 to November 22, 2010

- October 18, 2010 – Collected confirmation samples from ISRA areas AP/STP-1A, AP/STP-1D, and AP/STP-1F. RWQCB on site to collect split samples.
- October 18, 2010 – RWQCB on site to inspect additional excavation at B1-1D for consideration of completion.

- October 18, 2010 – Conducted pre-rain event BMP inspections at 2009 and 2010 ISRA areas and installed BMPs, including covering 2010 ISRA areas with plastic, per the ISRA SWPPP.
- October 19 - 20, 2010 – During rain event, conducted BMP inspections at 2009 and 2010 ISRA areas per the ISRA SWPPP and conducted performance monitoring at 2009 ISRA areas; no surface water samples were collected because no surface water flow was observed at sample locations.
- October 20, 2010 – During teleconference with RWQCB and DTSC, reviewed confirmation sample results and received completion approval for ISRA areas B1-1D and CTLI-1A.
- October 22, 2010 – Collected soil samples south of the B1-2 excavation boundary to assess the extent of additional excavation to remove soil associated with confirmation samples with results above SRGs.
- October 25 - 26, 2010 – Conducted ground-based topographic surveys of completed excavations at ISRA areas B1-1A, B1-1B, B1-1C, B1-1D, CTLI-1A, CTLI-1B, and IEL-1.
- October 25 - 29, 2010 – Conducted trench logging at ISRA areas B1-1A, B1-1B, B1-1C, B1-1D, CTLI-1A, CTLI-1B, and IEL-1.
- October 27, 2010 – Conducted weekly BMP inspections at 2009 and 2010 ISRA areas, per the ISRA SWPPP.
- October 27, 2010 – During teleconference with RWQCB and DTSC, reviewed additional excavation plan for ISRA area B1-2.
- October 27, 2010 - November 10, 2010 – Backfilled and/or re-contoured ISRA areas B1-1A, B1-1B, B1-1C, B1-1D, CTLI-1A, CTLI-1B, and IEL-1.
- October 29, 2010 – Installed BMPs at 2009 and 2010 ISRA areas in anticipation of rain, including covering 2010 ISRA areas with plastic, per the ISRA SWPPP.
- October 30, 2010 - During rain event, conducted BMP inspections at 2009 and 2010 ISRA areas per the ISRA SWPPP and conducted performance monitoring at 2009 ISRA areas; no surface water samples were collected because no surface water flow was observed at sample locations.
- November 2, 2010 – Ventura County on site to inspect excavation activities and compliance with grading permit.
- November 2 - 23, 2010 – Conducted additional excavation at ISRA area B1-2.
- November 3, 2010 – During teleconference with RWQCB and DTSC, reviewed confirmation sample results and received completion approval for ISRA area AP/STP-1A.
- November 3, 2010 – During teleconference with RWQCB and DTSC, reviewed additional excavation plan and additional confirmation sample locations for ISRA areas AP/STP-1D and AP/STP-1F.
- November 4, 2010 – Conducted additional excavation at ISRA areas AP/STP-1D and AP/STP-1F.
- November 5 and 8, 2010 – Conducted weekly BMP inspections at 2009 and 2010 ISRA areas, per the ISRA SWPPP.

- November 8, 2010 – Collected additional confirmation samples from ISRA areas AP/STP-1D and AP/STP-1F. RWQCB on site to collect split samples.
- November 8 - 9, 2010 – Conducted trench logging at ISRA areas AP/STP-1A, AP/STP-1D, and AP/STP-1F.
- November 10, 2010 – During teleconference with RWQCB and DTSC, reviewed additional confirmation sample locations for ISRA area B1-2.
- November 12 - 15, 2010 – Collected additional confirmation samples from ISRA area B1-2. RWQCB on site November 12, 2010 to collect split samples.
- November 15 - 16, 2010 – Hydroseeded ISRA areas B1-1A, B1-1B, B1-1C, B1-1D, CTLI-1A, CTLI-1B, and IEL-1.
- November 18, 2010 – Installed pin flags identifying planting locations at ISRA areas CTLI-1A and CTLI-1B
- November 22, 2010 – During teleconference with RWQCB and DTSC, discussed confirmation sample results and received completion approval for ISRA areas AP/STP-1D and AP/STP-1F.
- As of November 19, 2010 – Since ISRA project commenced in 2010, at Boeing ISRA areas ~5,900 cy of soil have been excavated, ~250 confirmation samples have been collected, and ~330 truckloads of non-hazardous soil delivered to offsite disposal facilities (McKittrick and Lancaster). Since ISRA project commenced in 2010, at NASA ISRA areas ~280 cy of soil have been excavated, ~25 confirmation samples have been collected, and ~13 truckloads of non-hazardous soil delivered to offsite disposal facilities (Lancaster).



Re-contoured excavation and BMPs at ISRA area CTLI-1B. Hydroseeded and containerized plants to be installed.



Hydroseeding ISRA area CTLI-1A following re-contouring and BMP installation. Containerized plants to be installed.



Containerized plants to be installed at CTLI-1 and B1-2.



Containerized plants being installed at CTLI-1.



Excavation activities at ISRA area AP/STP-1F, loosening soils with hand tools under oak trees.



Completed excavation at ISRA area AP/STP-1F; excavation depth was limited to 1 foot under oak trees.



RWQCB collecting split confirmation samples at ISRA area AP/STP-1F.



Ventura County inspecting restored ISRA areas B1-1A and B1-1B.

30-Day Look ahead – through December 15, 2010

- Boeing – Review confirmation sample results for ISRA area B1-2 with RWQCB and DTSC, conduct ground-based topographic survey and trench logging of completed excavation, and backfill and/or re-contour excavation.
- Boeing/NASA – Conducted ground-based topographic surveys of completed excavations at ISRA areas B1-2, AP/STP-1A, AP/STP-1D, and AP/STP-1F and backfill and/or re-contour excavations.
- Boeing/NASA – Conduct ground-based topographic survey of re-contoured ISRA areas B1-1A, B1-1B, B1-1C, B1-1D, CTLI-1A, CTLI-1B, IEL-1, AP/STP-1A, AP/STP-1D, AP/STP-1F, and B1-2.
- Boeing – Complete offsite disposal of soils from 2010 ISRA areas.
- Boeing – Demobilize equipment from 2010 ISRA implementation.
- Boeing/NASA – Identify performance monitoring sample locations for 2010 ISRAs and review with RWQCB and DTSC.
- Boeing/NASA – Continue BMP inspections at the 2009 and 2010 ISRA areas per the ISRA SWPPP, and obtain performance monitoring samples per the Performance Monitoring Plan during rain events.

Outfall 008 and 009 BMP Work Plan and Northern Drainage Restoration

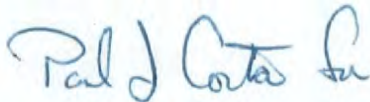
Type of Area	Completed Items	30-Day Look ahead – through December 15, 2010
ISRA Construction Areas	<ul style="list-style-type: none"> • November 9, 2010 – Installed erosion control BMPs at ISRA areas CTLI-1A and CTLI-1B after completion of re-contouring, per the ISRA Work Plan. • November 11 - 12, 2010 – Installed erosion control BMPs at ISRA areas B1-1A, B1-1B, B1-1C, and B1-1D, and IEL-1 after completion of re-contouring, per the ISRA Work Plan. • November 15 - 16, 2010 – Applied hydroseed/mulch to re-contoured ISRA areas B1-1A, B1-1B, B1-1C, B1-1D, CTLI-1A, CTLI-1B, and IEL-1.* 	<ul style="list-style-type: none"> • Install rock crib at ISRA area B1-2 after identifying location and developing design with Storm Water Expert Panel. • Install erosion control BMPs and hydroseed/mulch at ISRA areas AP/STP-1A, AP/STP-1D, AP/STP-1F, and B1-2 after completion of re-contouring.* • Install containerized plants at restored ISRA areas B1-2, CTLI-1A, and CTLI-1B.
Natural Drainages	<ul style="list-style-type: none"> • October 16, 2010 - November 22, 2010 – Continued watering and maintenance of native plants to be used for long term erosion control in Outfall 008 and 009 drainages. 	<ul style="list-style-type: none"> • Remove old, weathered jute matting from Northern Drainage areas. • Install rip-rap in two locations within the Northern Drainage. • Apply hydroseed/mulch along Northern Drainage slopes and banks for stabilization and erosion control.*

Dirt Roads	<ul style="list-style-type: none">• November 2, 2010 – Storm Water Expert Panel submitted a technical memorandum to Boeing recommending dirt road erosion control BMPs and procedures for road closures in the Outfall 008 and 009 watersheds.	<ul style="list-style-type: none">• Conduct road abandonment and restoration for Happy Valley fire roads in the Outfall 008 watershed.*• Conduct road abandonment and restoration for the CTLI-1 access road and the B1-1 access road in the Outfall 009 watershed.*
Other Open Space Areas	<ul style="list-style-type: none">• October 8, 2010 – Applied hydroseed/mulch at 4 acres within the Outfall 008 watershed, including 2009 ISRA Areas.*	<ul style="list-style-type: none">• Apply hydroseed/mulch to additional open space areas within the Outfall 008 and 009 watersheds.*

* Utilizing Storm Water Expert Panel's technical memorandum on hydroseed mulch.

The extent of hydroseed mulch application in Outfalls 008 and 009 are shown on Figures 1 through 3.

Approved By:



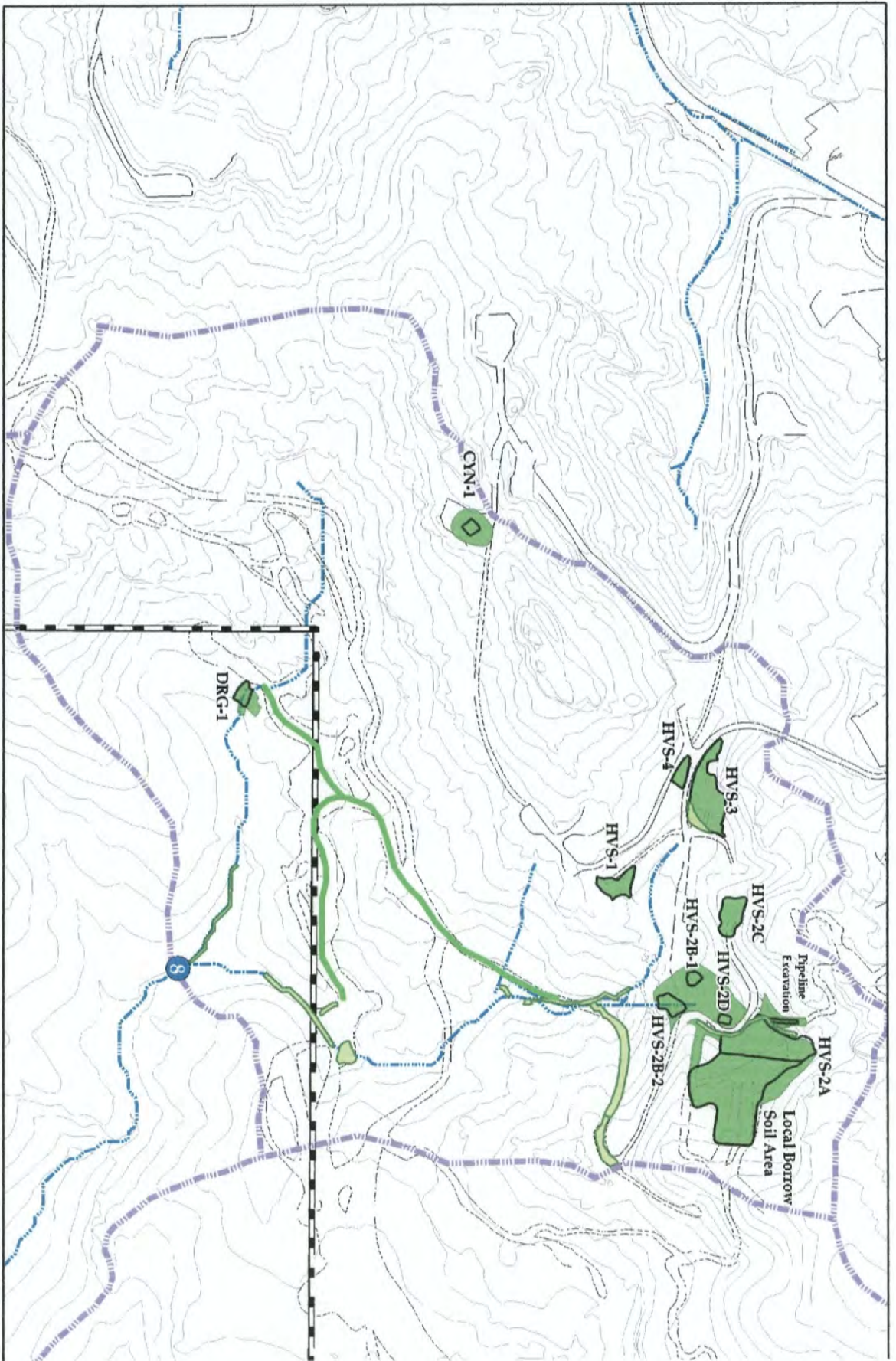
Thomas D. Gallacher
Director, Santa Susana
Environment, Health and Safety

Attachments:

- Figure 1 – Outfall 008 Hydroseeding
- Figure 2 – Outfall 009 (Eastern) Hydroseeding
- Figure 3 – Outfall 009 (Western) Hydroseeding

Distribution:

- Mr. Peter Raftery, RWQCB
- Ms. Cassandra Owens, RWQCB
- Mr. Buck King, DTSC
- Mr. Allen Elliott, NASA



● NPDES Outfalls (RWQCB Primary Oversight Authority)

— Natural Drainage

⋯ Surface Water Ditch

■ Hydroseeded (Fall 2010)

■ Planned Hydroseeding (Fall 2010 / Winter 2011)

■ Planting Area (Winter 2010)

□ Completed ISRFAs

Base Map Legend

— State Road

— Secondary

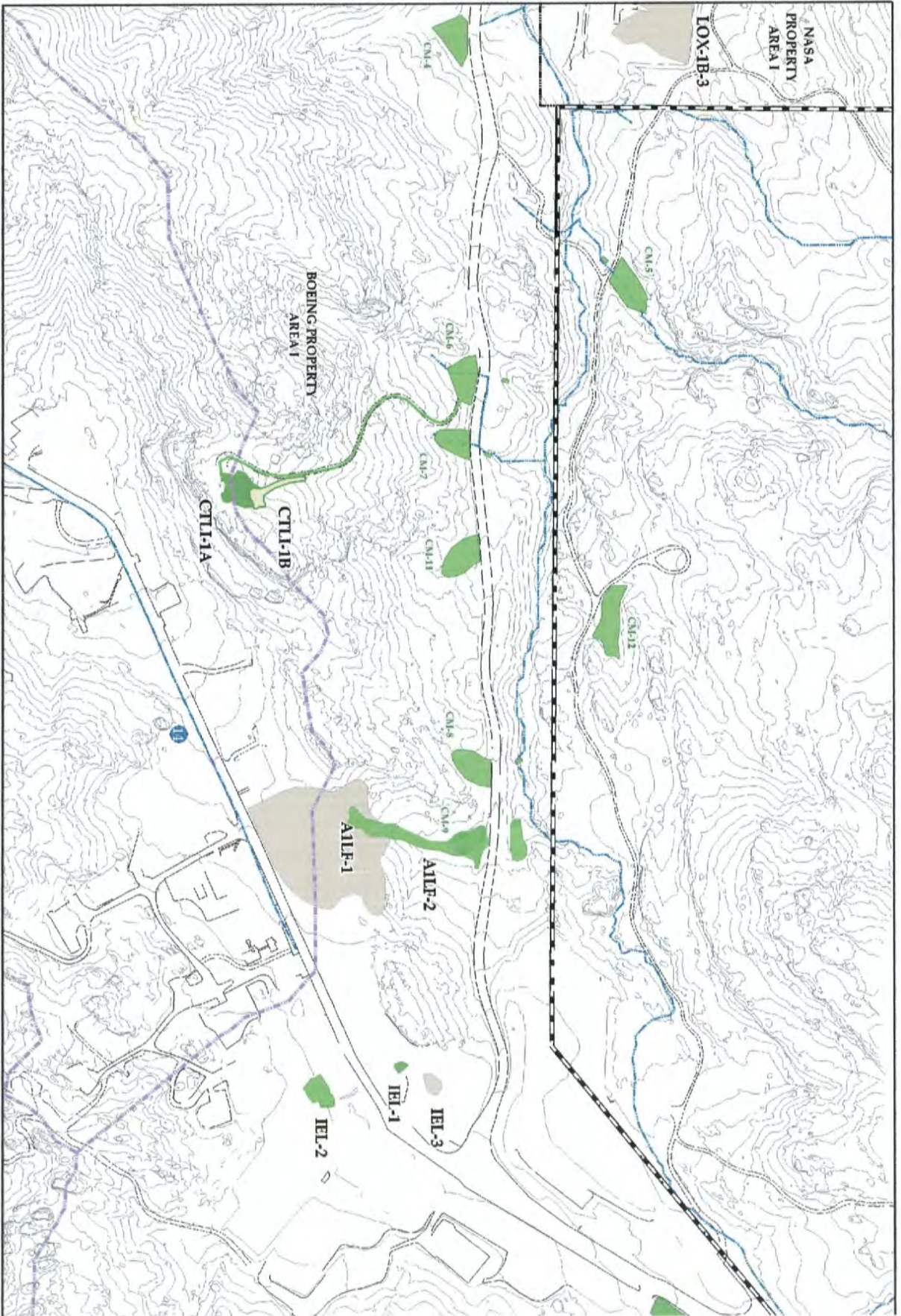
— Access Road

— Canal Embankment

— Outcrop

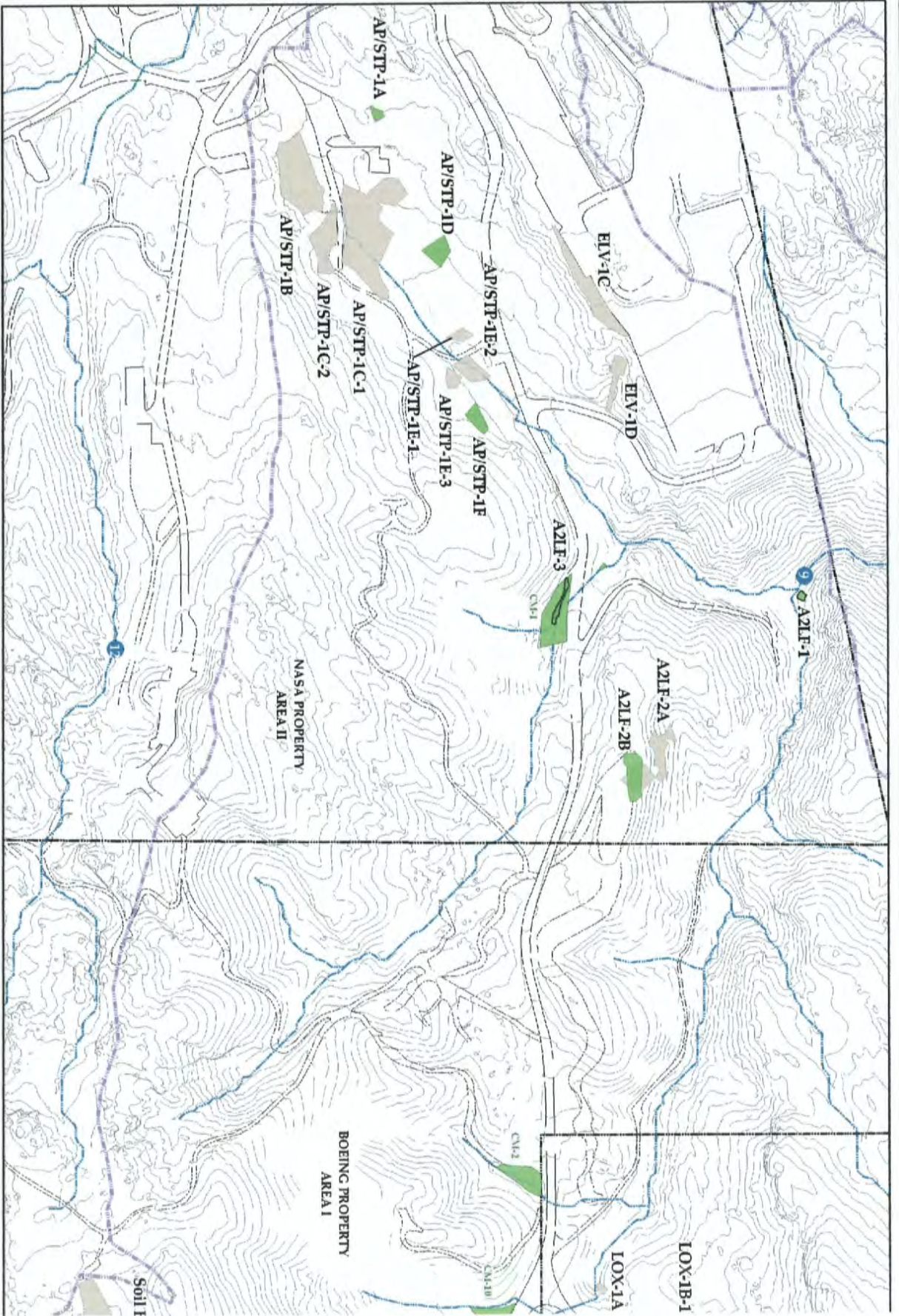
— Arc Cutting

— Dirt Road



- NPOCS Outside (SNOOCE Primary Oversight Authority)
- Natural Drainage
- Surface Water Drain
- Completed ISRA's
- ISRA Post-2010
- Planned Hydroseeding (Fall 2010/Winter 2011)
- Hydroseeded (Fall 2010)
- Planned Planting Area (Fall 2010/Winter 2011)

- Base Map Legend**
- 500' Break
 - Boundary
 - Boundary Area Buffer
 - 50' and Buffer
 - Contour
 - APZ Overlay
 - Ditch
- Note:**
 The 500' boundary area buffer is shown in gray on Jan. 2, 2010.



- Legend**
- NPDES Outlet (RWQCB Primary Oversight Authority)
 - Natural Drainage
 - Surface Water Ditch
 - Completed ISRA
 - ISRA Post-2010
 - Planned Hydroponics (Fall 2010/After 2011)
 - Hydroponics (Fall 2010)
 - Planned Paving Area (Fall 2010/After 2011)

- Base Map Legend**
- Contour
 - Boundary
 - Area Boundary
 - Canal
 - Road
 - AC Overlay
 - Ditch
- Note: Non-graphic features from Dept. Area 2, 2010.



The Boeing Company

5800 Woolsey Canyon Road
Canoga Park, CA 91304-1148

Date: 12/22/2010

No.: SHEA-110698

To: Sam Unger
Executive Officer
LA Regional Water Quality Control
Board

From: Tom Gallacher
Director
Santa Susana
Environmental, Health & Safety

Subject: December 2010 Monthly Progress Report for November 23, 2010 - December 19, 2010 Activity
California Water Code Section 13304 Interim Source Removal Action Order (ISRA)
(NPDES No. CA0001309, CI No. 6027, SCP NO. 1111, Site ID No. 2040109)

Per the Regional Water Board's request, Boeing, on behalf of Boeing and NASA, is providing the following Monthly Progress Report on the Interim Source Removal Action (ISRA) activities for the period of November 23, 2010 to December 19, 2010. In addition, a 30 day Look-Ahead is also provided.

Weekly team meetings have been held to track the ISRA activities since April 16, 2009. During this reporting period, the meeting participants have consisted of RWQCB staff, DTSC staff, Storm Water Expert Panel Members, Boeing, and NASA. For the period from mid-November to mid-December, the primary activities associated with 2010 ISRA areas on Boeing and NASA property have been continuing excavation, confirmation soil sampling, site restoration, and offsite transportation of waste soils. In addition, inspections of BMPs were conducted at 2009 and 2010 ISRA areas per the ISRA SWPPP. BMPs were implemented at 2009 and 2010 ISRA areas prior to rain events and performance monitoring was performed at 2009 ISRA areas during rain events. Routine inspections of the field work are being conducted by Ventura County and RWQCB staff. DTSC staff will be on site when possible.

Per NPDES Permit (Order R4-2010-0090) adopted by the RWQCB on June 3, 2010, Boeing and NASA, with input from the Storm Water Expert Panel, submitted a BMP Plan for the Outfalls 008 and 009 watersheds on October 14, 2010 and posted the plan to the ISRA website. As identified in the plan, Boeing with support from the Expert Panel is implementing BMPs, identifying additional data needs, and reviewing the ISRA process. A site visit of these watersheds was conducted on December 1-2, 2010 with the Expert Panel. In addition, Boeing, working with the Expert Panel and NASA, has prepared a surface water sampling plan for treatment BMP subarea monitoring and ISRA performance monitoring, to be submitted to the RWQCB on December 22nd. Accomplishments and upcoming actions are listed below.

Completed Tasks – November 23, 2010 to December 19, 2010

- November 23, 2010 – December 4, 2010 – Conducted additional excavation at ISRA area B1-2.

- November 23, 2010 – December 2, 2010 – Completed installation of containerized plants at ISRA areas CTLI-1A and CTLI-1B.
- November 23, 2010 – December 2, 2010 – Completed rehabilitation of dirt road used to access ISRA Areas B1-1B, B1-1C, and B1-1D, which included constructing water bars, installing BMPs, and applying hydroseed/mulch.
- November 23, 2010 – December 7, 2010 – Conducted trench logging at ISRA area B1-2.
- November 23, 2010 – December 19, 2010 – Designed BMP to be located within ISRA area B1-2 to capture eroded sediment from the B-1 area, not completed.
- November 24, 2010 – Conducted ground-based topographic survey of completed ISRA areas AP/STP-1A, AP/STP-1D, and AP/STP-1F.
- November 27, 2010 – December 14, 2010 – Completed rehabilitation of fire roads within Happy Valley, which included constructing water bars, installing BMPs, and application of hydroseed/mulch.
- November 29 – 30, 2010 – Re-contoured ISRA areas AP/STP-1A, AP/STP-1D, and AP/STP-1F.
- December 1, 2010 – Storm Water Expert Panel members (Jon Jones and Dr. Stenstrom) and RWQCB on site for site walk of ISRA areas and Northern Drainage, and to observe Dekaport sample splitter performance test.
- December 1 - 2, 2010 – Storm Water Expert Panel members (Jon Jones and Dr Stenstrom) on site to identify treatment BMP subarea monitoring locations and identify/evaluate planned treatment BMP areas for design/construction in 2011.
- December 1 – 2, 2010 – Collected additional confirmation samples from ISRA area B1-2. RWQCB on site to collect split samples on December 1, 2010.
- December 1 – 3, 2010 – Conducted ground-based topographic surveys of restored ISRA areas AP/STP-1A, AP/STP-1D, AP/STP-1F, B1-1A, B1-1B, B1-1C, B1-1D, CTLI-1A, CTLI-1B, and IEL-1.
- December 2, 2010 – Applied hydroseed/mulch at ISRA areas AP/STP-1A, AP/STP-1D, and AP/STP-1F.
- December 3, 2010 – Arborist on site to observe excavation near oak trees at ISRA area B1-2.
- December 3, 2010 – Conducted weekly BMP inspections at 2009 and 2010 ISRA areas, per the ISRA SWPPP.
- December 4, 2010 – Installed BMPs at ISRA area B1-2 in anticipation of rain, including covering the ISRA area with plastic, per the ISRA SWPPP.
- December 6, 2010 – Conducted rain event Performance Monitoring inspections and BMP inspections per the ISRA SWPPP. No surface water samples were collected because no surface water flow was observed at sample locations.
- December 6, 2010 – Collected additional confirmation samples from ISRA area B1-2. RWQCB on site to collect split samples.

- December 6 – 9, 2010 – Completed rehabilitation of dirt road to access ISRA areas CTLI-1A and CTLI-1B, which included constructing water bars, installing BMPs, and applying hydroseed/mulch.
- December 7, 2010 – During teleconference with RWQCB and DTSC, discussed confirmation sample results and received completion approval for portions of ISRA area B1-2.
- December 7 – 19, 2010 – Conducted ground-based topographic survey of completed portions of ISRA area B1-2, not completed.
- December 9, 2010 – Storm Water Expert Panel member (Dr. Gearheart) and phytoremediation experts on site to discuss and plan a proposed phytoremediation research study in the Area I Landfill drainage.
- December 10 – 19, 2010 – Backfilled and re-contoured completed portion of ISRA area B1-2, not completed.
- December 13, 2010 – Conducted weekly BMP inspections at 2009 and 2010 ISRA areas, per the ISRA SWPPP.
- December 16, 2010 – Conducted additional excavation and collected additional confirmation samples at ISRA area B1-2.
- As of December 19, 2010 – Since ISRA project commenced in 2010, at Boeing ISRA areas ~6,200 cy of soil have been excavated, ~280 confirmation samples have been collected, and ~380 truckloads of non-hazardous soil delivered to offsite disposal facilities (McKittrick and Lancaster). Since ISRA project commenced in 2010, at NASA ISRA areas ~280 cy of soil have been excavated, ~25 confirmation samples have been collected, and ~13 truckloads of non-hazardous soil delivered to offsite disposal facilities (Lancaster).



Installing plants at ISRA area CTLI-1B.



Applying hydroseed/mulch at B-1 access road.



Re-contoured ISRA area AP/STP-1D, with hydroseed/mulch.



Additional excavation at ISRA area B1-2 with supervac.



RWQCB collecting split confirmation samples at ISRA area B1-2.



Backfilling and re-contouring completed portions of ISRA area B1-2.



Covering ISRA Area B1-2 with plastic in preparation of rain.



Expert Panel and MWH setting-up performance monitoring sample splitter, RWQCB observing.

30-Day Look ahead – through January 19, 2011

- Boeing – Ship soil sample for use in Area I Landfill phytoremediation research study to Edenspace Laboratory.
- Boeing – Submit surface water sampling plan for treatment BMP subarea monitoring and ISRA performance monitoring; review with RWQCB.
- Boeing – Review confirmation sample results for ISRA area B1-2 with RWQCB and DTSC, complete ground-based topographic surveys, trench logging, backfilling and re-contouring, and install BMPs and apply hydroseed/mulch.
- Boeing – Complete design and installation of BMP to be located within ISRA area B1-2 to capture eroded sediment from the B-1 area.
- Boeing – Install containerized plants in B1-2 drainage area.

- Boeing – Complete soil removal at soil borrow area, complete ground-based topographic surveys, re-contour, and install BMPs and apply hydroseed/mulch.
- Boeing – Complete offsite disposal of soils from 2010 ISRA areas.
- Boeing – Demobilize equipment from 2010 ISRA implementation.
- Boeing – Modify monitoring well completions in ISRA area B1-2 due to decrease in adjacent ground elevation.
- Boeing – Begin preparation of Phase II (2010) Implementation Summary Report.
- Boeing/NASA – Continue BMP inspections at the 2009 and 2010 ISRA areas per the ISRA SWPPP, and collect treatment BMP subarea monitoring and performance monitoring samples per the Monitoring Plan during rain events.

Outfall 008 and 009 BMP Work Plan and Northern Drainage Restoration

Type of Area	Completed Items	30-Day Look ahead – through January 19, 2010
ISRA Construction Areas	<ul style="list-style-type: none"> • December 2, 2010 – Installed hydroseed/mulch at ISRA areas AP/STP-1A, AP/STP-1D, and AP/STP-1F after completion of re-contouring.* • November 23, 2010 - December 2, 2010 – Installed containerized plants at restored ISRA areas CTLI-1A and CTLI-1B. 	<ul style="list-style-type: none"> • Install BMP within ISRA area B1-2 to control SW in B-1 area following completion of design. • Install erosion control BMPs and hydroseed/mulch at ISRA area and B1-2 after completion of re-contouring.* • Install containerized plants at restored ISRA area B1-2.
Natural Drainages	<ul style="list-style-type: none"> • November 23, 2010 – December 19, 2010 – Continued watering and maintenance of native plants to be used for long term erosion control in Outfall 008 and 009 drainages. • November 23, 2010 – December 19, 2010 – Removed old, weathered jute matting from Northern Drainage areas, installed rip-rap in two locations within the Northern Drainage, applied hydroseed/mulch along Northern Drainage slopes and banks for stabilization and erosion control.* 	<ul style="list-style-type: none"> • No activities planned.
Dirt Roads	<ul style="list-style-type: none"> • November 23, 2010 – December 9, 2010 – Completed road rehabilitation of dirt roads used to access CTLI-1 and B1-1 ISRA areas in Outfall 009 watershed.*# • November 27 – 28, 2010 – Conducted road abandonment and restoration for 	<ul style="list-style-type: none"> • Apply hydroseed/mulch to Happy Valley fire road.*

	Happy Valley fire roads in the Outfall 008 watershed.#	
Other Open Space Areas	• No activities performed.	• No activities planned.

* Utilizing Storm Water Expert Panel's technical memorandum on hydroseed/mulch.
Utilizing Storm Water Expert Panel's technical memorandum on road abandonment

Approved By:



Thomas D. Gallacher
Director, Santa Susana
Environment, Health and Safety

Distribution:

Mr. Peter Raftery, RWQCB
Ms. Cassandra Owens, RWQCB
Mr. Buck King, DTSC
Mr. Allen Elliott, NASA