

Post Excavation In-Place Sample Results Eastern Outfall 009 Watershed

- Base Map Legend**
- Administrative Area Boundary
 - RFI Site Boundary
 - Soil Borrow Area
 - NPDES Outfall
 - Surface Water Divide
 - Drainage
 - Non Jurisdictional Surface Water Pathway
 - Previous Excavation Area
 - A/C Paving
 - Dirt Road
 - Elevation Contour

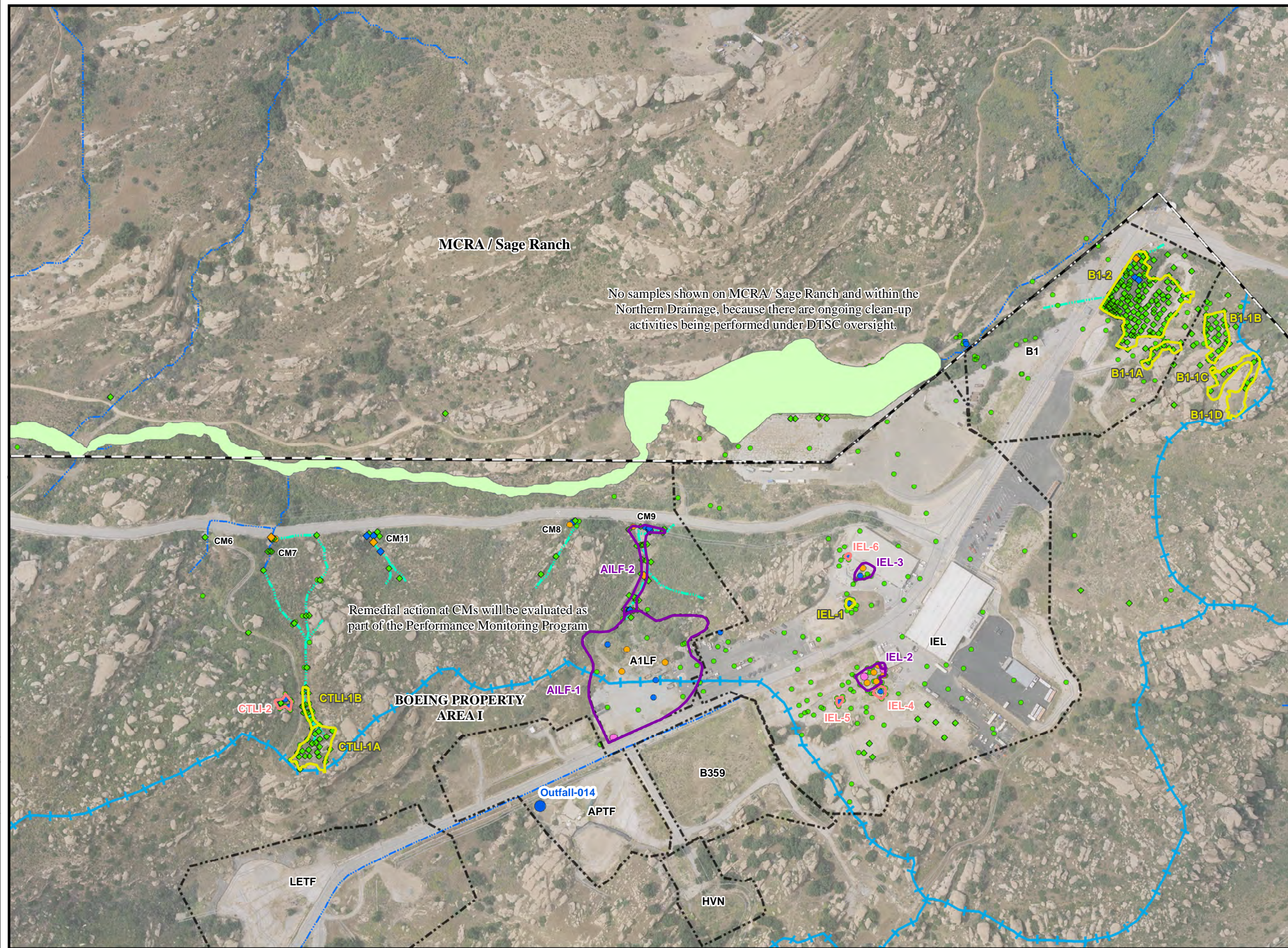
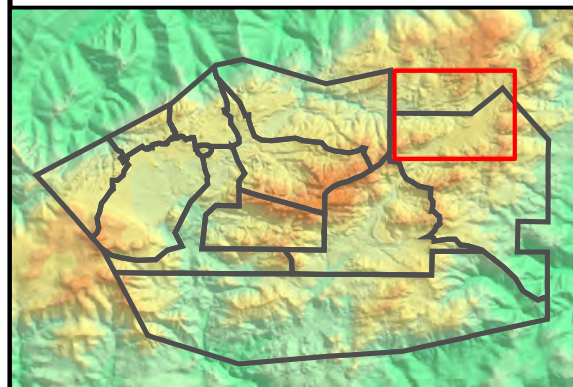
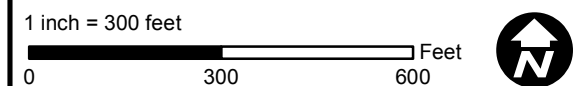
- Figure Legend**
- Actual excavation boundaries ISRA Areas completed in 2009
 - Actual excavation boundaries ISRA Areas completed in 2010
 - ISRA Areas planned for future remediation
 - ISRA PEAs not planned for future remediation

- Chemical Data Legend**
- Dioxin Sample Locations (< 2 feet bgs)**
- ≤ SRG
 - > SRG and < 2x SRG
 - ≥ 2x SRG and < 10 x SRG
 - ≥ 10x SRG
- Metal Sample Locations (< 2 feet bgs)**
- ≤ SRG
 - > SRG and < 2x SRG
 - ≥ 2x SRG and < 10 x SRG
 - ≥ 10x SRG

ISRA COCs/ SRGs
 Cadmium: 1 mg/kg
 Copper: 29 mg/kg
 Lead: 34 mg/kg
 Mercury: 0.09 mg/kg
 Dioxin: 3.0 pg/g

- Figure Notes:**
- Implementation at 2009 ISRA areas was described in the ISRA Phase I Implementation Report (MWH, 2009).
 - PEA-CTLI-2, PEA-IEL-4, PEA-IEL-5, and PEA-IEL-6 underwent a contaminant migration potential evaluation based on chemical and physical characteristics in the 2010 Work Plan Addendum (MWH, 2010), with a resulting low rank, and therefore were not considered ISRA areas and were not carried forward for the remedial alternatives evaluation.
 - Aerial imagery and topographic contours were collected June 2, 2010 by Sage Consultants, Inc., and represent post-excavation conditions.

Path: T:\projects\rock3\ISRA\Figures\Outfall-009\Dotmap_East_Post_11x17.mxd; Date: 4/29/2011



Post Excavation In-Place Sample Results Western Outfall 009 Watershed

- Base Map Legend**
- Administrative Area Boundary
 - RFI Site Boundary
 - Soil Borrow Area
 - NPDES Outfall
 - Surface Water Divide
 - Drainage
 - Non Jurisdictional Surface Water Pathway
 - Previous Excavation Area
 - A/C Paving
 - Dirt Road
 - Elevation Contour

- Figure Legend**
- Actual excavation boundaries ISRA Areas completed in 2009
 - Actual excavation boundaries ISRA Areas completed in 2010
 - ISRA Areas planned for future remediation
 - ISRA PEAs not planned for future remediation

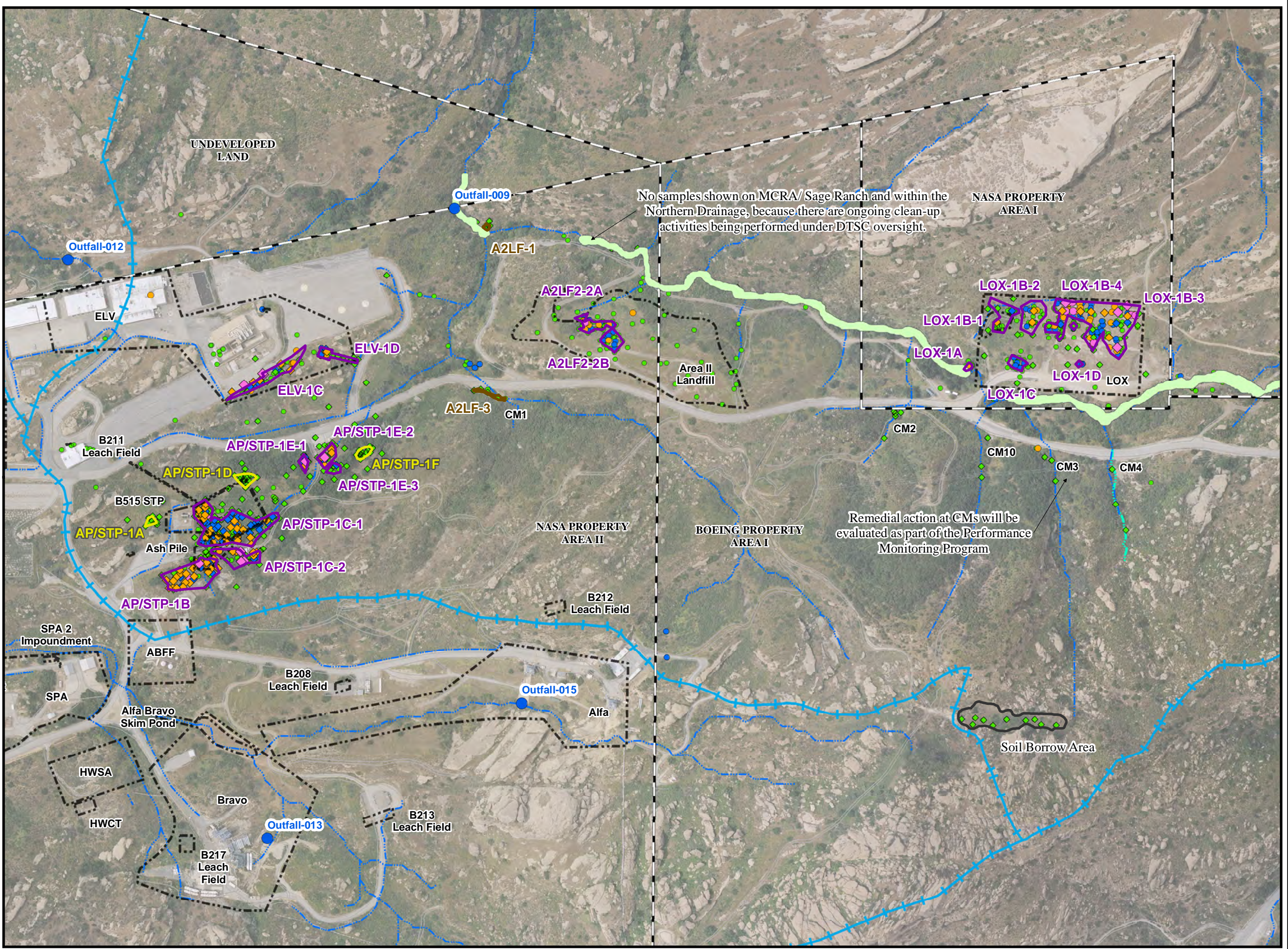
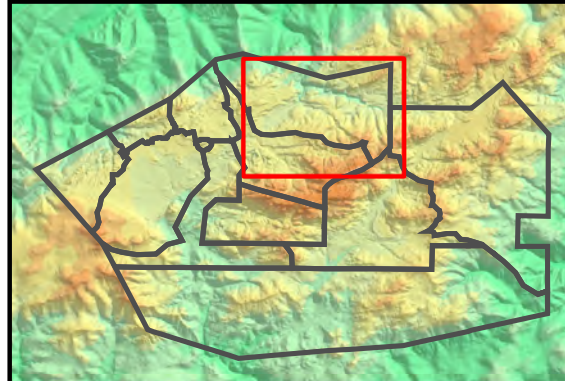
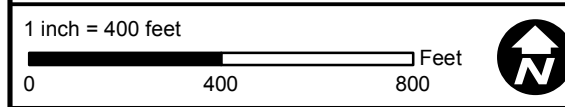
- Chemical Data Legend**
- Dioxin Sample Locations (< 2 feet bgs)**
- ≤ SRG
 - > SRG and < 2x SRG
 - ≥ 2x SRG and < 10 x SRG
 - ≥ 10x SRG
- Metal Sample Locations (< 2 feet bgs)**
- ≤ SRG
 - > SRG and < 2x SRG
 - ≥ 2x SRG and < 10 x SRG
 - ≥ 10x SRG

ISRA COCs/SRGs
 Cadmium: 1 mg/kg
 Copper: 29 mg/kg
 Lead: 34 mg/kg
 Mercury: 0.09 mg/kg
 Dioxin: 3.0 pg/g

Figure Notes:

- Implementation at 2009 ISRA areas was described in the ISRA Phase I Implementation Report (MWH, 2009).
- PEA-CTL1-2, PEA-IEL-4, PEA-IEL-5, and PEA-IEL-6 underwent a contaminant migration potential evaluation based on chemical and physical characteristics in the 2010 Work Plan Addendum (MWH, 2010), with a resulting low rank, and therefore were not considered ISRA areas and were not carried forward for the remedial alternatives evaluation.
- Aerial imagery and topographic contours were collected June 2, 2010 by Sage Consultants, Inc., and represent post-excavation conditions.

Path: T:\projects\rock3\ISRA\Figures\Outfall-009\Dotmap_West_Post_11x17.rDate: 4/29/2011



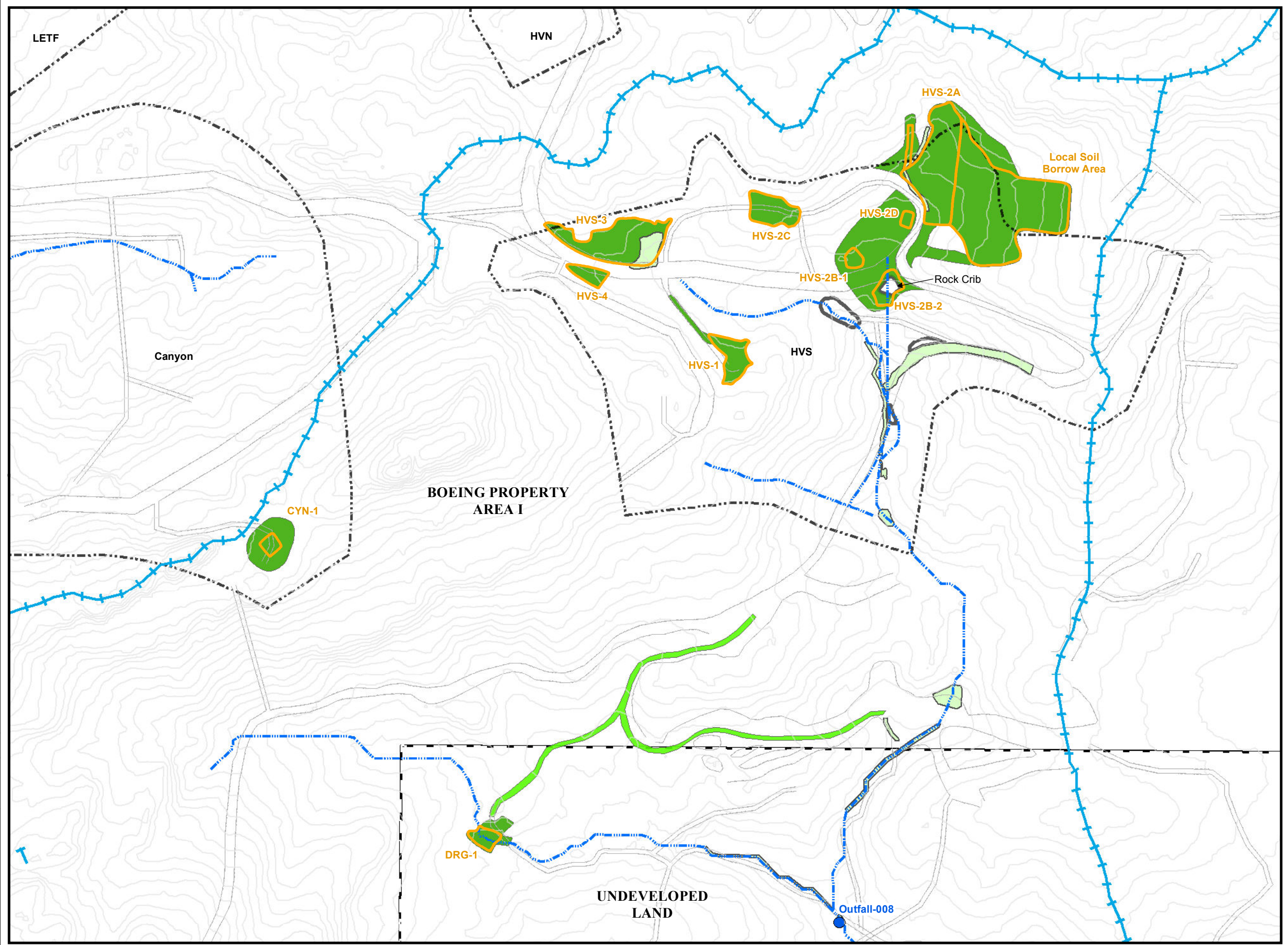
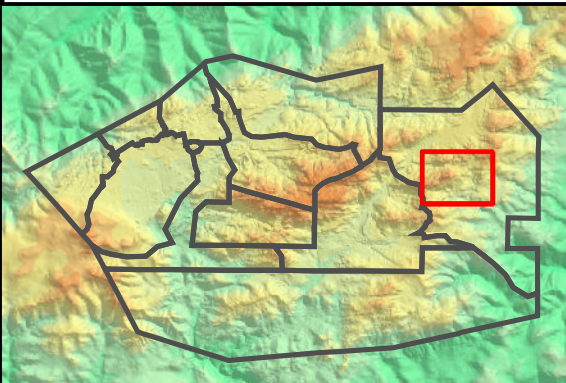
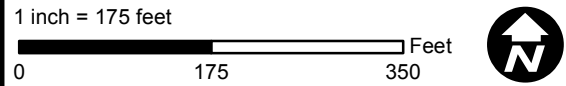
BMP Installations Outfall 008 Watershed

- Base Map Legend**
- Administrative Area Boundary
 - RFI Site Boundary
 - NPDES Outfall
 - Drainage
 - Non Jurisdictional Surface Water Pathway
 - Surface Water Divide
 - A/C Paving
 - Dirt Road
 - Elevation Contour

- Data Legend**
- Actual ISRA Excavation Boundary
 - ISRA Areas planned for future remediation
 - Hydroseed (Fall 2010 / Winter 2011)
 - Road Rehabilitation
 - Planting Area (Winter 2010)

Figure Notes:
1. Topographic contours were collected June 2, 2010 by Sage Consultants, Inc., and represent pre-excavation conditions.

Path: T:\projects\rock3\ISRA\Figures\Outfall-008\Hydroseeding.mxd Date: 4/28/2011



BMP Installations Eastern Outfall 009 Watershed

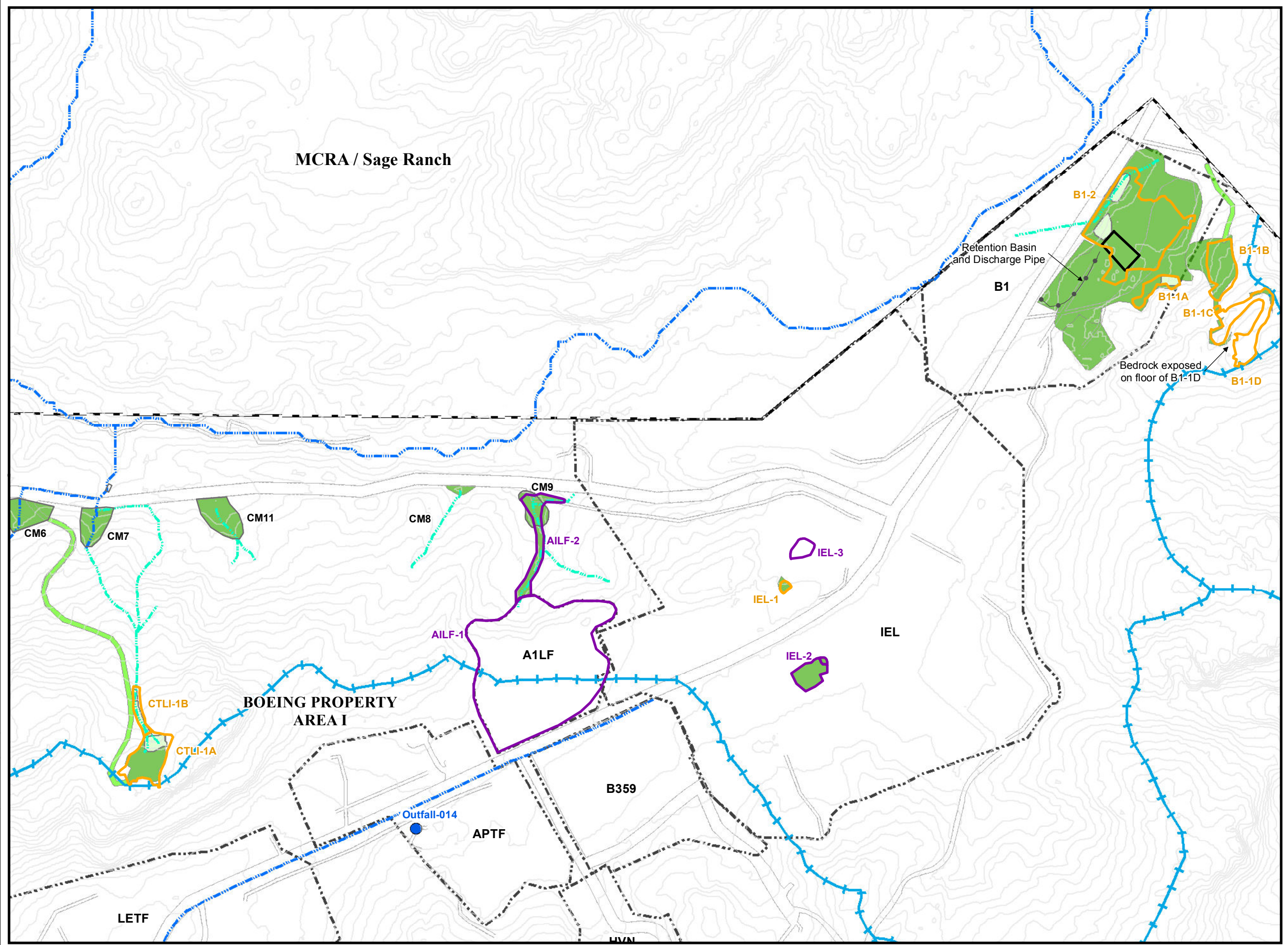
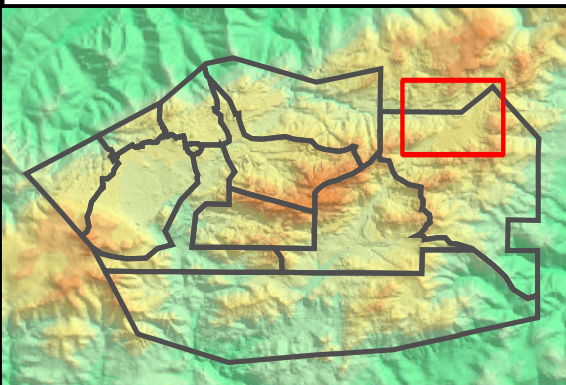
- Base Map Legend**
- Administrative Area Boundary
 - RFI Site Boundary
 - NPDES Outfall
 - Drainage
 - Non Jurisdictional Surface Water Pathway
 - Surface Water Divide
 - A/C Paving
 - Dirt Road
 - Elevation Contour

- Data Legend**
- Actual ISRA Excavation Boundary
 - ISRA Areas planned for future remediation
 - Hydroseed (Fall 2010 / Winter 2011)
 - Road Rehabilitation
 - Planting Area (Fall 2010/ Winter 2011)

Figure Notes:
1. Topographic contours were collected June 2, 2010 by Sage Consultants, Inc., and represent pre-excitation conditions.

Path: T:\projects\rock3\ISRA\Figures\Outfall-009\Hydroseeding_East.mxd Date: 4/28/2011

1 inch = 250 feet
0 250 500 Feet



SANTA SUSANA FIELD LABORATORY

FIGURE 3-4

BMP Installations Western Outfall 009 Watershed

- Base Map Legend**
- Administrative Area Boundary
 - RFI Site Boundary
 - NPDES Outfall
 - Drainage
 - Non Jurisdictional Surface Water Pathway
 - Surface Water Divide
 - A/C Paving
 - Dirt Road
 - Elevation Contour

- Data Legend**
- Actual ISRA Excavation Boundary
 - ISRA Areas planned for future remediation
 - Hydroseed (Fall 2010 / Winter 2011)
 - Road Rehabilitation
 - Planting Area (Fall 2010/ Winter 2011)

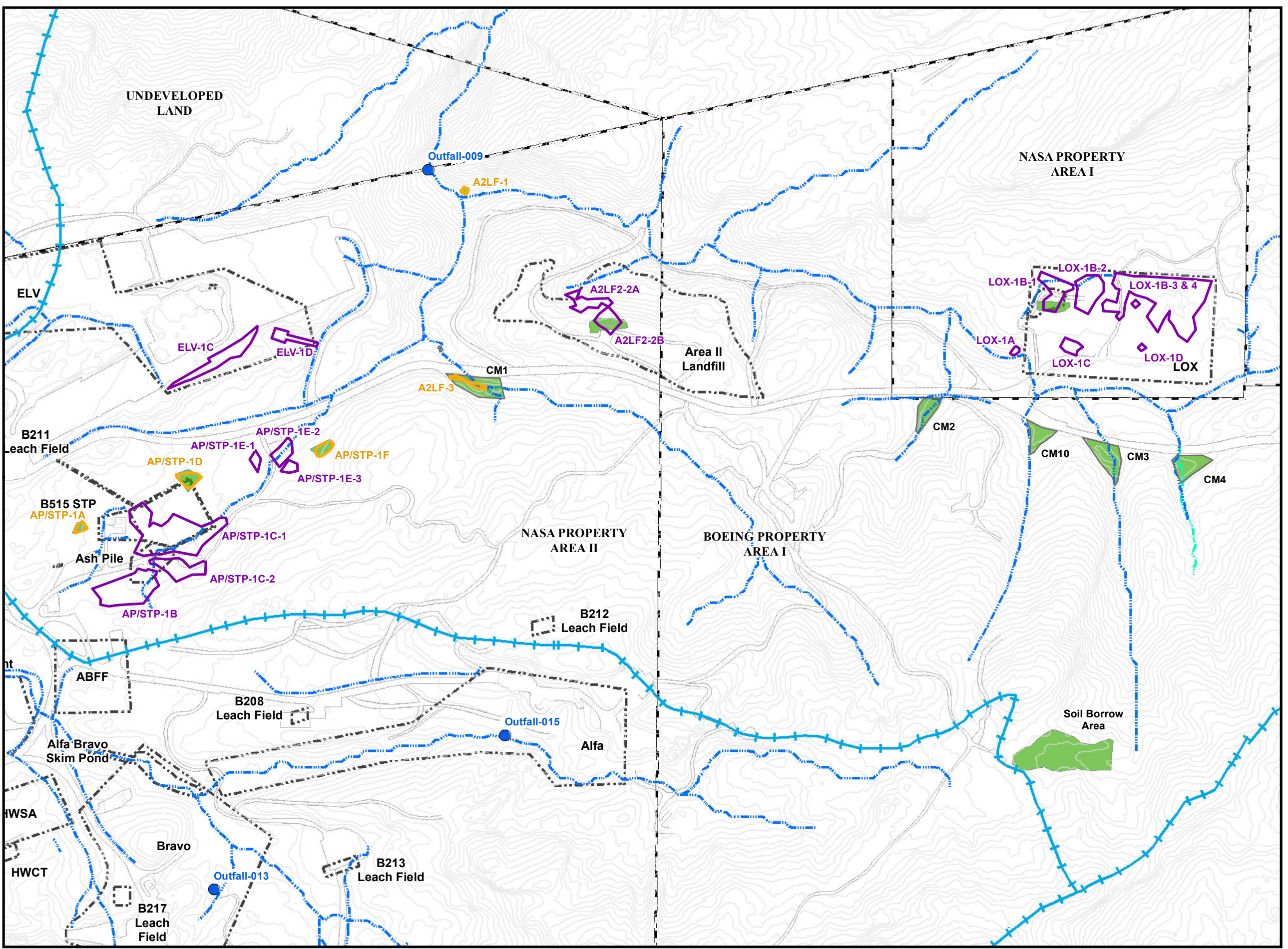
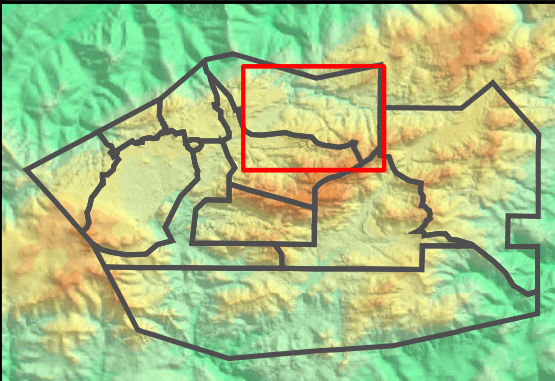
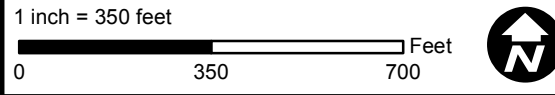


Figure Notes:
1. Topographic contours were collected June 2, 2010 by Sage Consultants, Inc., and represent pre-excitation conditions.

Path: T:\projects\rock3\ISRA\Figures\Outfall-009\Hydroseeding_West.mxd Date: 4/28/2011



SANTA SUSANA FIELD LABORATORY

FIGURE 3-5