

B1-1C SITE VOLUMES (Cubic Yards)

Site Volume Table: Unadjusted

Site	Stratum	Surf1	Surf2	Cut	Fill	Net	Method
B1-1C	new2	surface2	surface2a	22	0	22 (C)	Grid
				22	0	22 (C)	Composite
				22	0	22 (C)	End area

B1-1D SITE VOLUMES (Cubic Yards)

Site Volume Table: Unadjusted

Site	Stratum	Surf1	Surf2	Cut	Fill	Net	Method
B1-1D	new2	surface2	surface2a	827	2	825 (C)	Grid
				850	16	833 (C)	Composite
				938	45	893 (C)	End area

NOTES

BENCH MARK:
 FOUND BRASS DISK STAMPED "N 22688.45 E 12152.65 ELEV 1813.75 LS 2957" SET IN TOP WEST EDGE OF ROCK OUTCROPPING LOCATED IN VACANT FIELD NORTH OF ASPHALT DRIVE NORTH OF BUILDING 110.

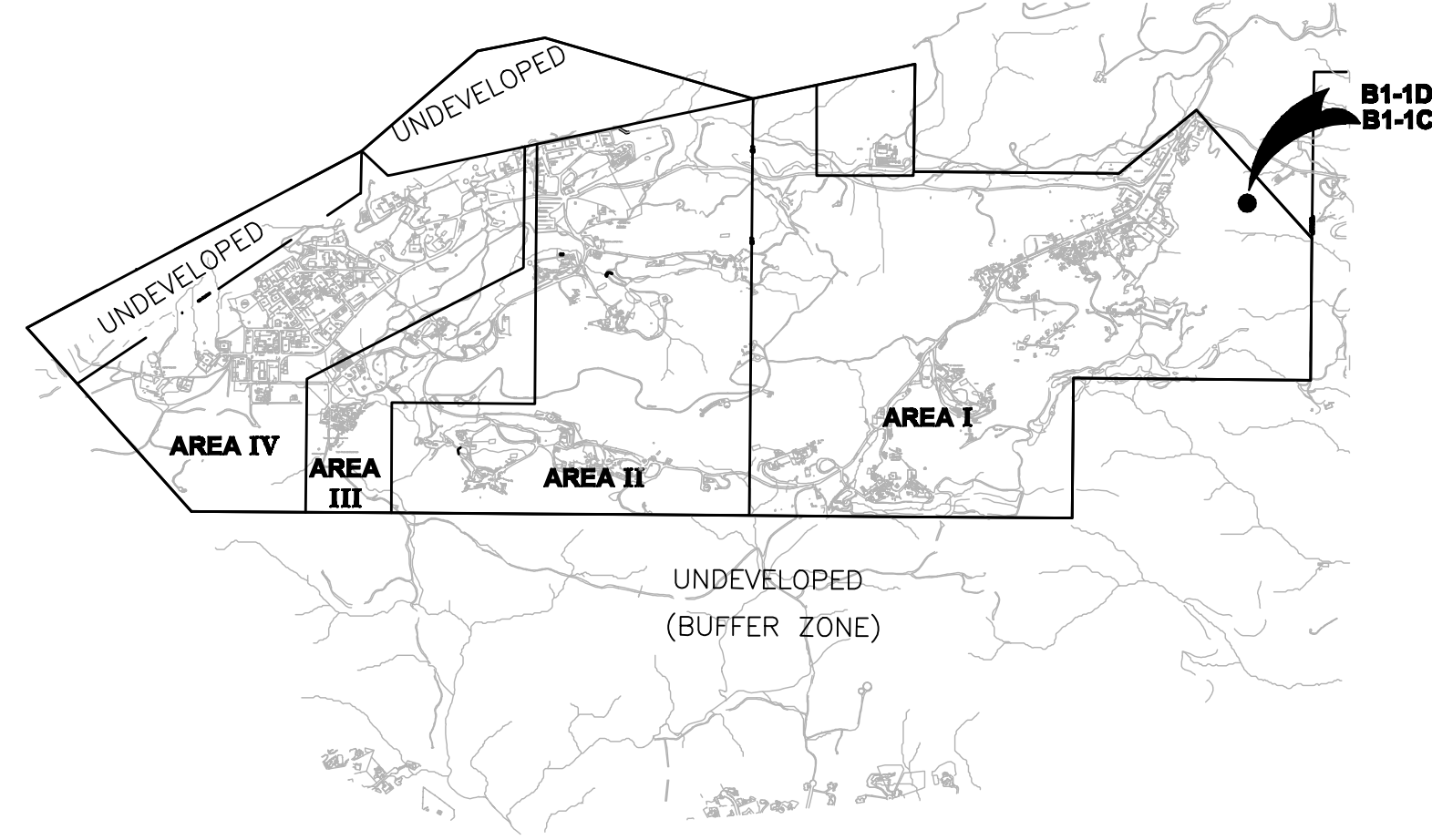
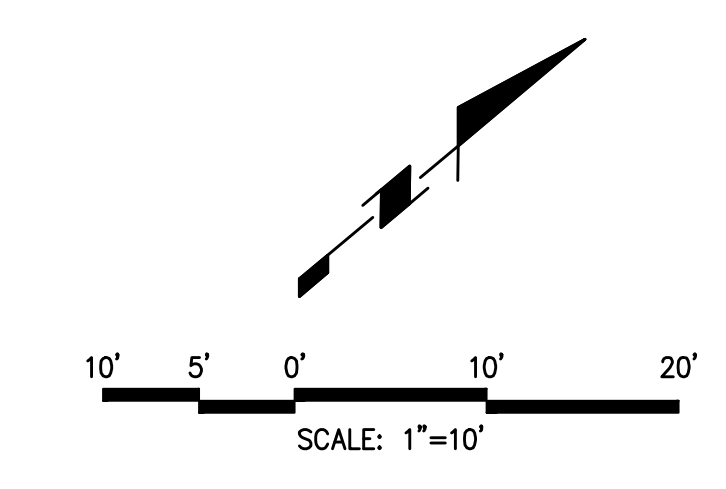
COORDINATES DERIVED FROM BOEING 1992 TOPOGRAPHIC MAP (NAD27 NAVD29 FEET):
 N 266917.4900
 E 1785312.1200
 ELEV 1811.13

PURPOSE: THE PURPOSE OF THIS DRAWING IS TO CALCULATE THE VOLUME OF ISRA SOIL REMOVED AS OF OCTOBER 2010.

- NOTES: 1: POST EXCAVATION SURFACE SURVEYED OCTOBER 25, 2010.
 2: VOLUMES CALCULATED USING AUTODESK LAND DESKTOP SOFTWARE.

LEGEND

- 1985 5' CONTOURS (OCTOBER 2010)
- 1980 1' CONTOURS (OCTOBER 2010)
- ROCK FORMATION
- 1500 5' CONTOURS (JUNE 2010)
- 1' CONTOURS (JUNE 2010)
- - - EXCAVATION LIMITS

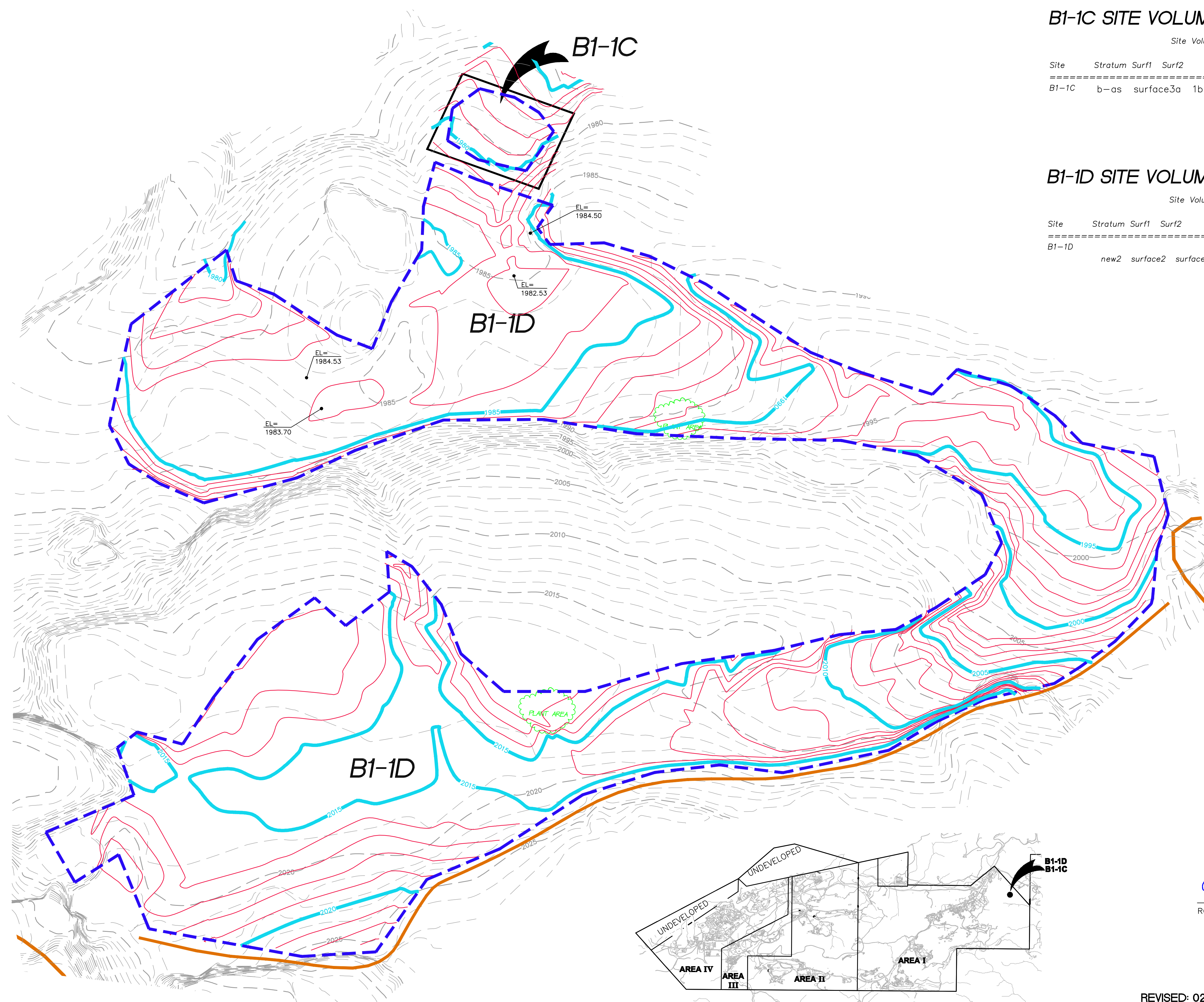


LOCATION MAP (NO SCALE)

REVISED 2-25-2011 (MODIFIED CONTOURS)

<p>SAGE Consultants, Inc. LAT 34°13'00" N LONG 119°02'40" W ELEV 35.438m Surveying • Application Development • Construction • Engineering 1978 Ventura Blvd., CALAMAR, CA 92010-7047 Tel: (805) 462-6068 • Fax: (805) 389-9815 www.sagecon.com</p>	<p>BOEING SSFL B1-1A, -1B, -1C, -1D & IEL-1 POST EXCAVATION EXHIBIT</p>	<p>SHEET 2 OF 2</p>
	<p>SCALE: 1"=10' DATE: 10-27-2010</p>	

©:Documents and Settings\robert\Local Settings\Temp\w2946\B1-1 A-D Post Ex.dwg Apr 08, 2011, 4:53pm RobertL



B1-1C SITE VOLUMES (Cubic Yards)

Site Volume Table: Unadjusted

Site	Stratum	Surf1	Surf2	Cut	Fill	Net	Method
B1-1C	b-as	surface3a	1b-d-as-built	0	5	5 (F)	Grid
				0	5	5 (F)	Composite
				0	5	5 (F)	End area

B1-1D SITE VOLUMES (Cubic Yards)

Site Volume Table: Unadjusted

Site	Stratum	Surf1	Surf2	Cut	Fill	Net	Method
B1-1D	new2	surface2	surface2a	111	15	96 (C)	Grid
				122	7	115 (C)	Composite
				130	21	109 (C)	End area

NOTES

BENCH MARK:
 FOUND BRASS DISK STAMPED "N 22688.45 E 12152.65 ELEV 1813.75 LS 2957" SET IN TOP WEST EDGE OF ROCK OUTCROPPING LOCATED IN VACANT FIELD NORTH OF ASPHALT DRIVE NORTH OF BUILDING 110.

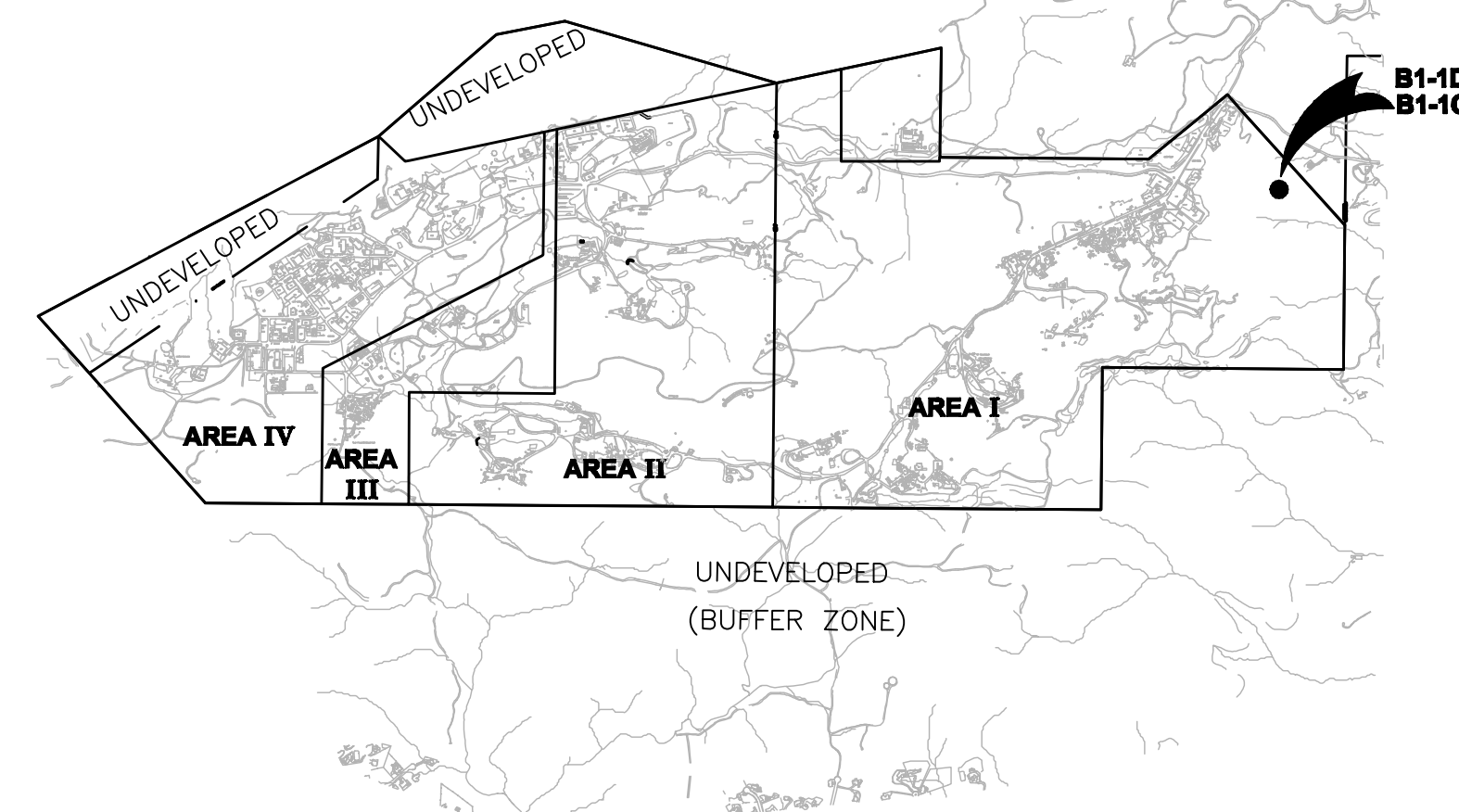
COORDINATES DERIVED FROM BOEING 1992 TOPOGRAPHIC MAP (NAD27 NAVD29 FEET):
 N 266917.4900
 E 1785312.1200
 ELEV 1811.13

PURPOSE: THE PURPOSE OF THIS DRAWING IS TO CALCULATE THE VOLUME OF ISRA SOIL REMOVED PER AS OF OCTOBER 2010.

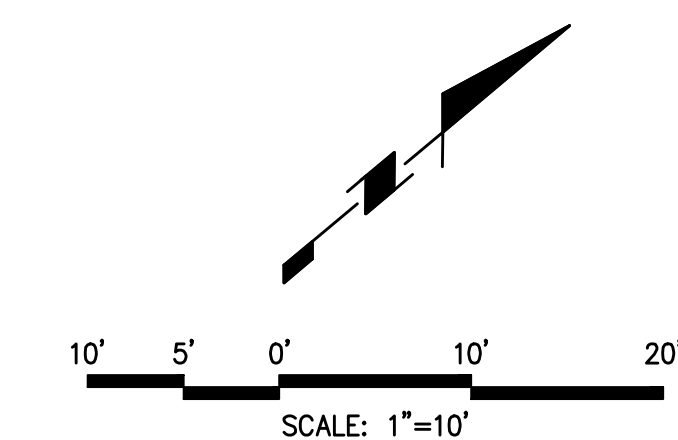
- NOTES: 1. AS BUILT SURFACE SURVEYED OCTOBER 25, 2010.
 2. VOLUMES CALCULATED USING AUTODESK LAND DESKTOP SOFTWARE.

LEGEND

- 5' CONTOURS (DECEMBER 2010)
- 1' CONTOURS (DECEMBER 2010)
- ROCK FORMATION
- 5' CONTOURS (JUNE 2010)
- 1' CONTOURS (JUNE 2010)
- - - EXCAVATION LIMITS

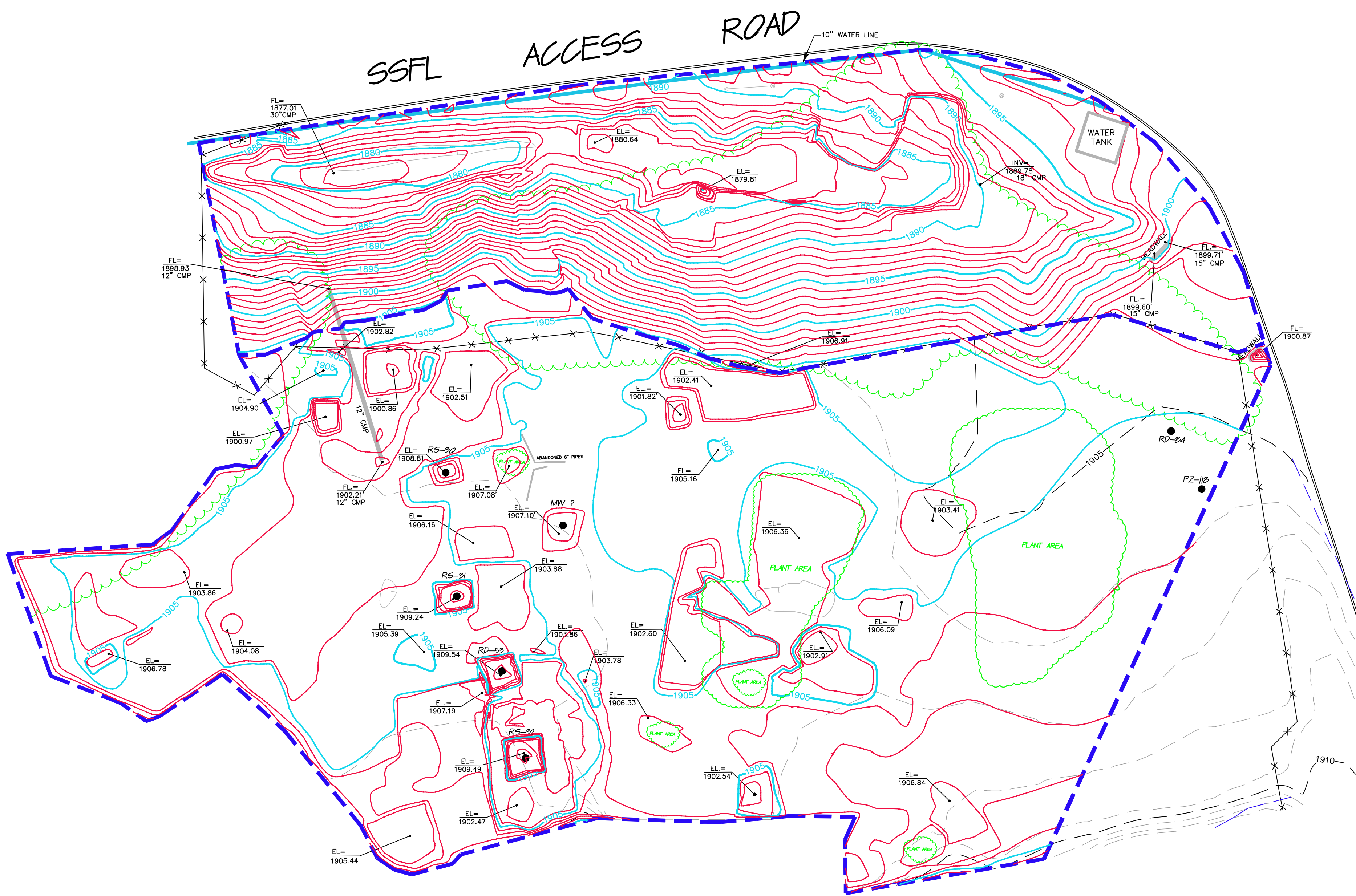


Robert E. Littell
 ROBERT E. LITTELL RCE 13395



REVISED: 02-23-2011 (MODIFIED CONTOURS)

<p>SAGE consultants, Inc. LAT 34°-13'-00" N LONG 119°-02'-49" W ELEV 55.438m Surveyors • Application Engineers • Civil Engineers • Engineers 1975 Ventura Blvd., CALAMAR, CA 92010-7047 Tel. (805) 462-6088 • Fax (805) 389-9815 www.sagecon.com</p>	<p>BOEING SSFL B1-1A, -1B, -1C, -1D & IEL-1 AS-BUILT EXHIBIT</p>		<p>SHEET 2 OF 2</p>
	<p>SCALE: 1"=10' DATE: 12-9-2010</p>	<p>JOB NUMBER: 494-V-1988 DWG NAME: B1-B-AS-BUILT</p>	



SITE VOLUMES (Cubic Yards)*

Site	Stratum	Surf1	Surf2	Unadjusted Cut	Fill	Net	Method
B2	B2	orig	new	5781	20	5761 (C)	Grid
				6097	58	6039 (C)	Composite
				6050	67	5983 (C)	End area

*REVISED 03-04-2011

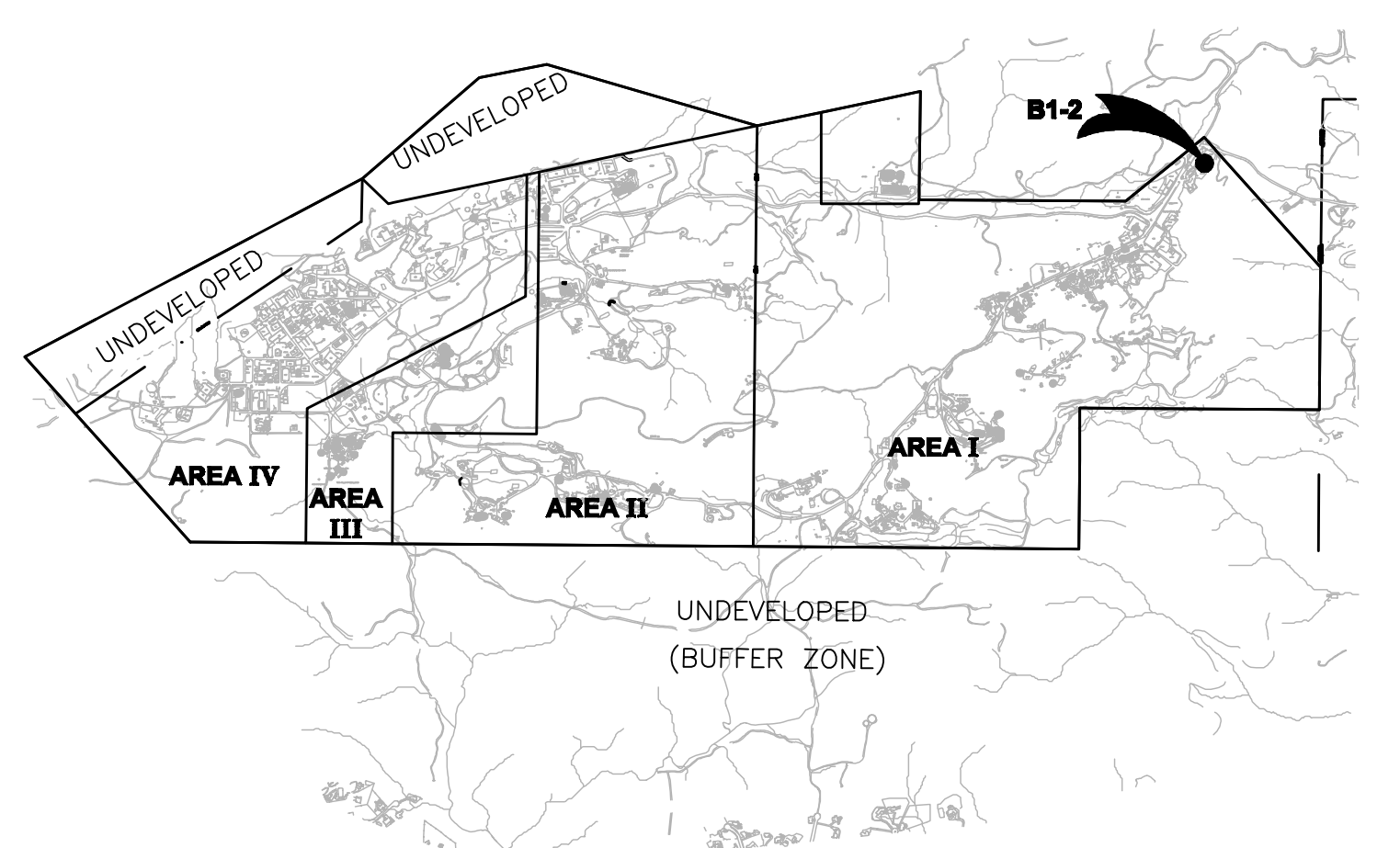
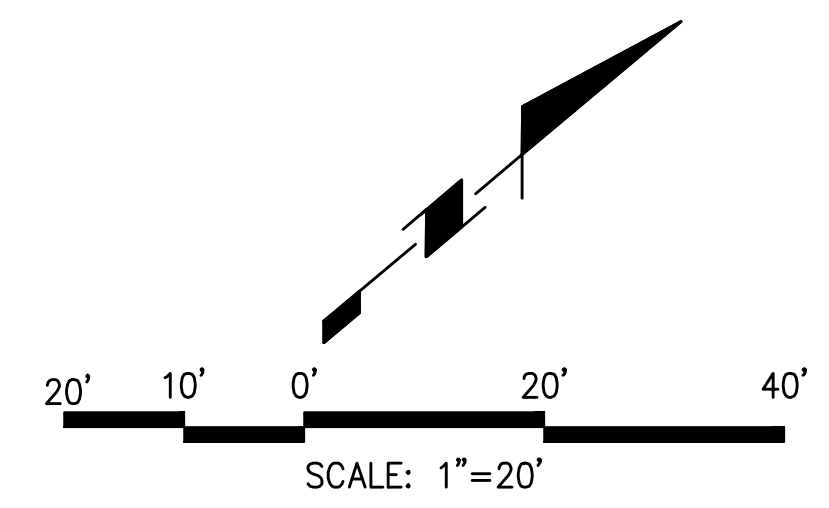
LEGEND

- 1920 5' CONTOURS (DECEMBER 2010)
- 1900 1' CONTOURS (DECEMBER 2010)
- - - 1920 5' CONTOURS (JUNE 2010)
- - - 1900 1' CONTOURS (JUNE 2010)
- ROCK FORMATION
- - - EXCAVATION LIMITS
- DRIP TREE LINE
- AC CURB
- x x CHAIN LINK FENCE
- 10" WATER LINE
- RD-84 MONITORING WELL
- PZ-118 PIEZOMETER WELL
- EL= 1902.54 SPOT ELEVATION
- FL= 1902.54 FLOWLINE ELEVATION

SAGE CONSULTANTS INC. BOEING SSFL ISRA B1-2, AREA I WELLS SHEET 1 of 1
 JO: 494-V-1989 5800 WOOLSEY CANYON ROAD, CANOGA PARK, CA Date: 12/09/2010

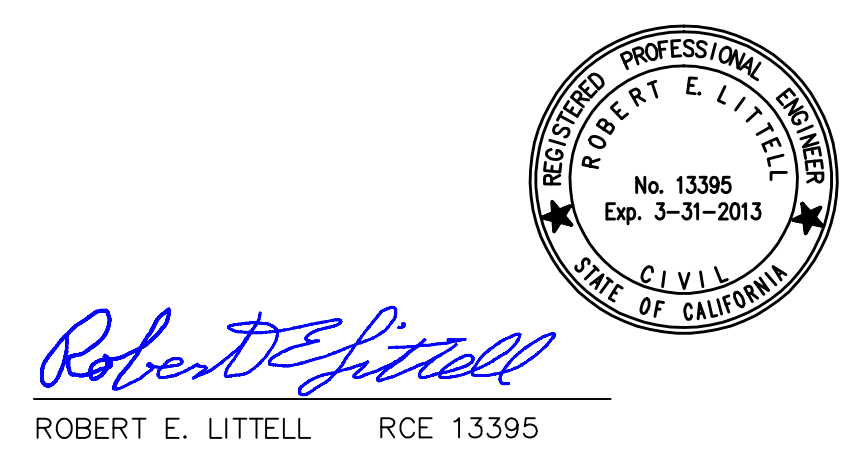
Point ID	North Latitude *	West Longitude *	NAVD 88***	Northing**	Easting**	Surface Casing***	Well Head****	Ground****
5	34-13-52.96029	118-42-40.25009	1813.81	266917.4900	1785312.1200		BM	1811.13
RS-32	34-14-16.24314	118-40-22.14082	1912.29	269191.3460	1796923.5331	1910.02	1909.65	1908.54
RD-53	34-14-16.35484	118-40-22.41200	1911.46	269202.7891	1796900.8423	1909.82	1908.82	1908.82
RS-31	34-14-16.28280	118-40-22.71269	1912.29	269205.8851	1796875.6183	1909.92	1909.65	1908.51
RS-30	34-14-16.59015	118-40-23.06922	1912.18	269226.9444	1796845.8256	1909.75	1909.54	1907.31
?	34-14-16.74106	118-40-22.67348	1909.15	269241.9771	1796879.1521	1907.24	1906.51	1907.23
PZ-118	34-14-18.20730	118-40-21.37878	1910.51	269389.4660	1796988.8398	1908.19	1907.87	1905.62
RD-84	34-14-18.14251	118-40-21.59361	1910.47	269393.1458	1796970.8277	1908.41	1907.83	1905.37

* degrees, minutes, seconds; NAD 83
 ** SPC, CA Zone 5, Survey Feet, NAD 27
 *** NAVD 88: north side surface casing
 ****NAVD 29; north side



NOTES

- BENCH MARK:
 FOUND BRASS DISK STAMPED "N 22688.45 E 12152.65 ELEV 1813.75 LS 2957" SET IN TOP WEST EDGE OF ROCK OUTCROPPING LOCATED IN VACANT FIELD NORTH OF ASPHALT DRIVE NORTH OF BUILDING 110.
- COORDINATES DERIVED FROM BOEING 1992 TOPOGRAPHIC MAP (NAD27 NAVD29 FEET):
 N 266917.4900
 E 1785312.1200
 ELEV 1811.13
- PURPOSE: THE PURPOSE OF THIS DRAWING IS TO CALCULATE THE VOLUME OF ISRA SOIL REMOVED AS OF JANUARY 2011.
- NOTES: 1. POST EXCAVATION SURFACE SURVEYED JANUARY 11, 2011.
 2. VOLUMES CALCULATED USING AUTODESK LAND DESKTOP SOFTWARE.
 3. MONITORING WELL DATA RE-SURVEYED DECEMBER 10, 2010.
 4. POST-EX CONTOURS WERE ADDED UNDER TREE AREA.



Robert E. Littell
 ROBERT E. LITTELL RCE 13395

REVISED: 05-13-2011 (ADDED POST-EX CONTOURS UNDER TREE AREA)

 LAT 34°-13'-00" N LONG 118°-02'-40" W ELEV 55.438m Surveyors • Application Developers • GIS Integration • Engineers 1978 Ventura Blvd., CAMARILLO CA 93010-7847 Tel. (805) 482-6088 • Fax (805) 389-9815 www.sagecon.com	BOEING SSFL ISRA AREA B1-2 POST EXCAVATION EXHIBIT WAS 4506	SHEET 1 OF 1
	SCALE: 1"=20' DATE: 1-23-2011	JOB NUMBER: 494-V-1989 DWG NAME: AREA-B1-2_POSTEX