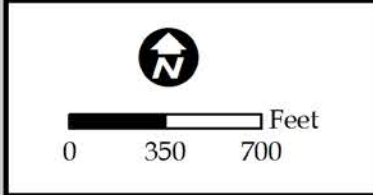
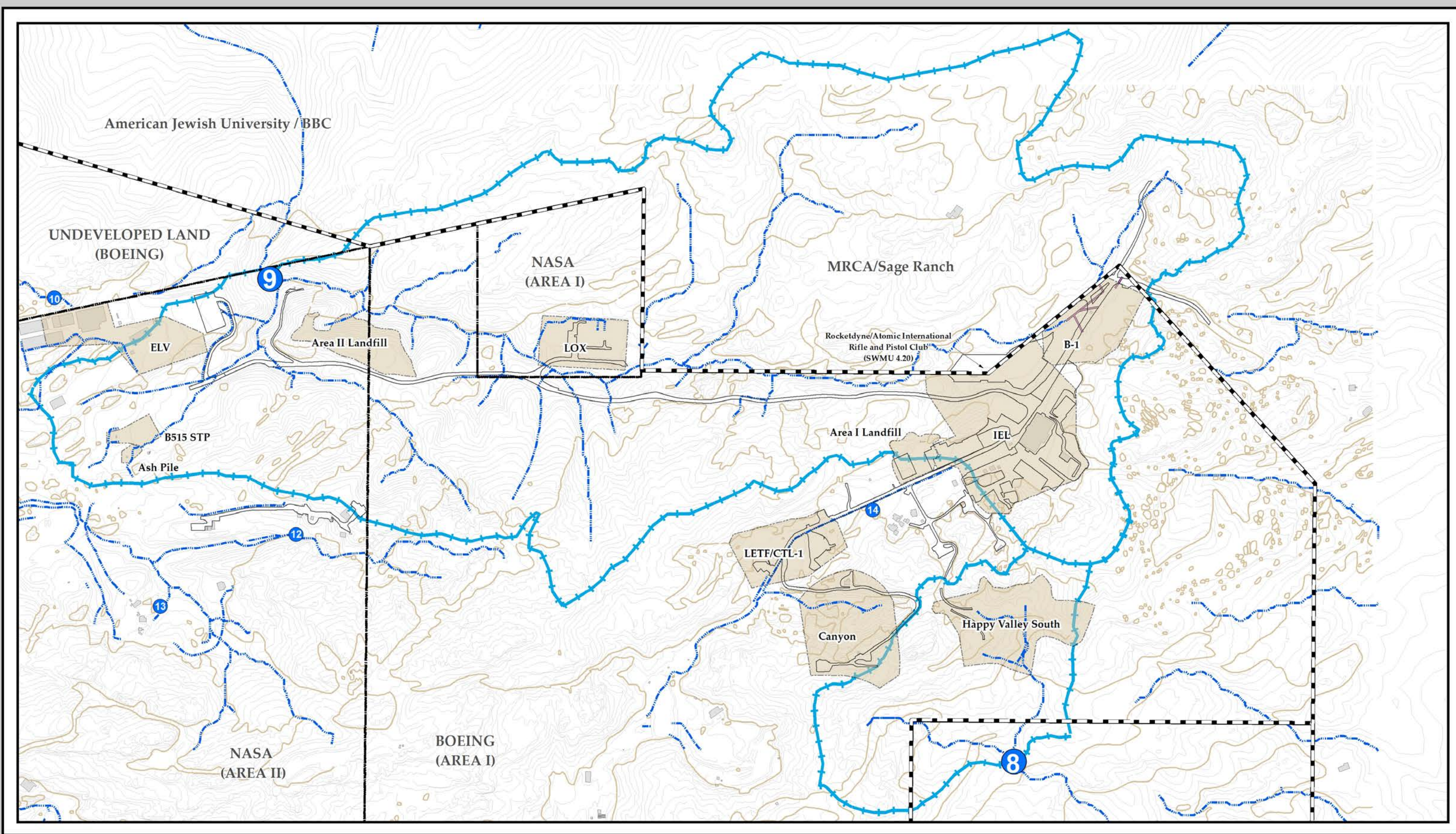


FIGURES



Outfalls 008 and 009 Location Map

Date: August 20, 2012
 File: \\UspasInetapp1\dei\rockeddyne gis\MasterGISFiles\ISRA_Projects\ISRA_MXD\BMP\CompliancePlanSept2010\OF8_9Location.mxd

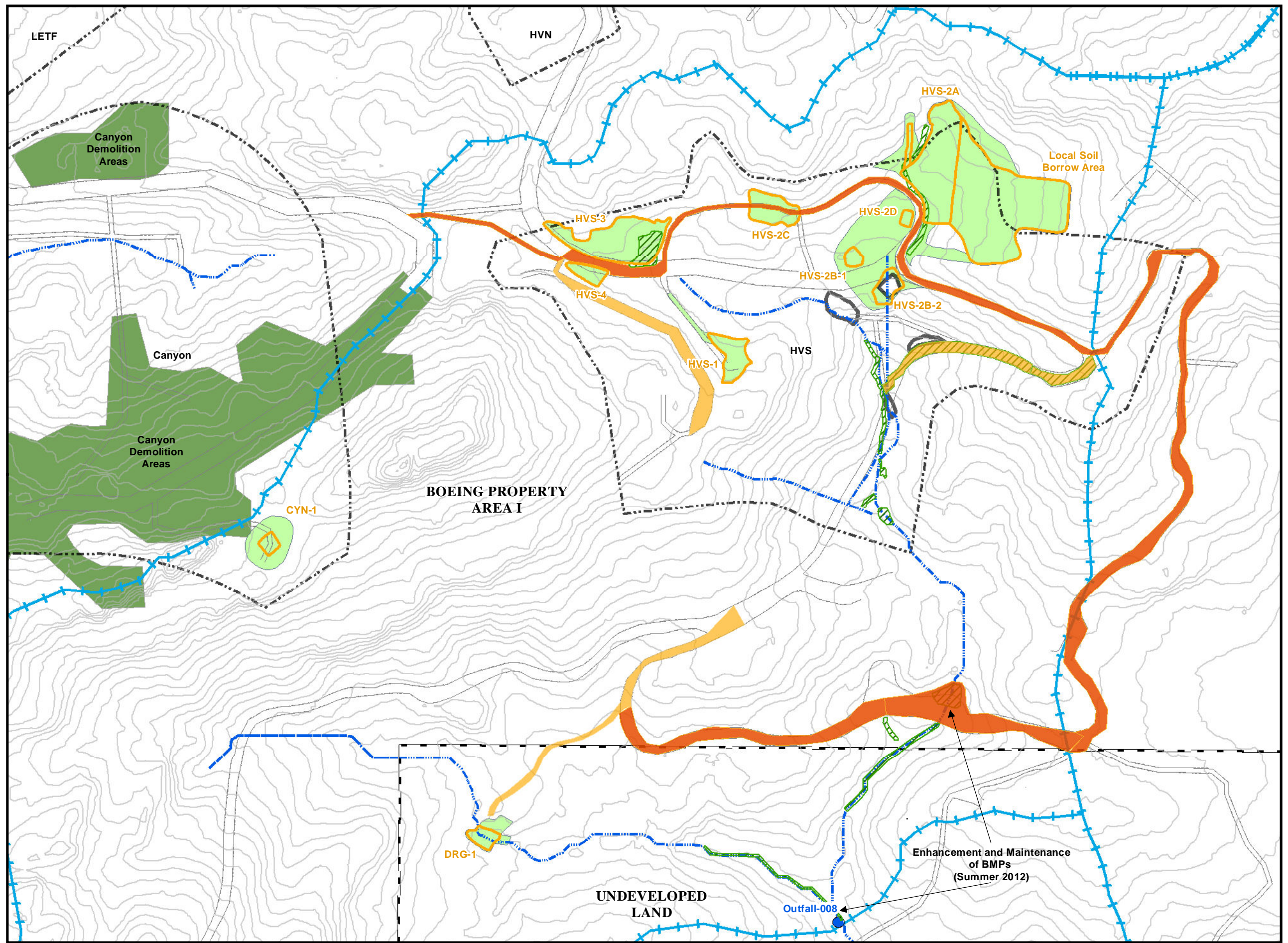
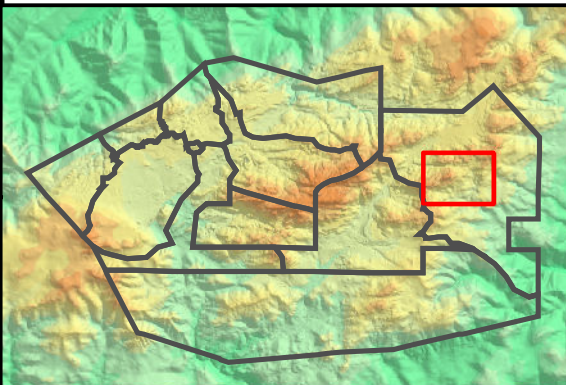
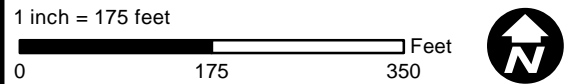
FIGURE 1-1

BMP Installations 2010-2012 Outfall 008 Watershed

- Base Map Legend**
- Administrative Area Boundary
 - RFI Site Boundary
 - NPDES Outfall
 - Drainage
 - Surface Water Divide
 - A/C Paving
 - Dirt Road
 - Elevation Contour
- Data Legend**
- Actual ISRA Excavation Boundary
 - ISRA Areas planned for future remediation
 - Planting Area
 - Hydroseed 2011/2012
 - Hydroseed 2010/2011
 - Road Abandonment and Restoration
 - Road Stabilization Measures
 - Rock Crib/Swale

- Figure Notes:
1. Topographic contours from 2010 Sage Consultants, Inc.
 2. Hydroseed areas may also have additional sediment and erosion control BMPs installed within the area shown (can include fiber rolls, silt fencing, hay bales, or other controls).

Path: T:\projects\rock3\ISRA\Figures\Outfall-008\Hydroseeding_rev.mxd Date: 8/29/2012



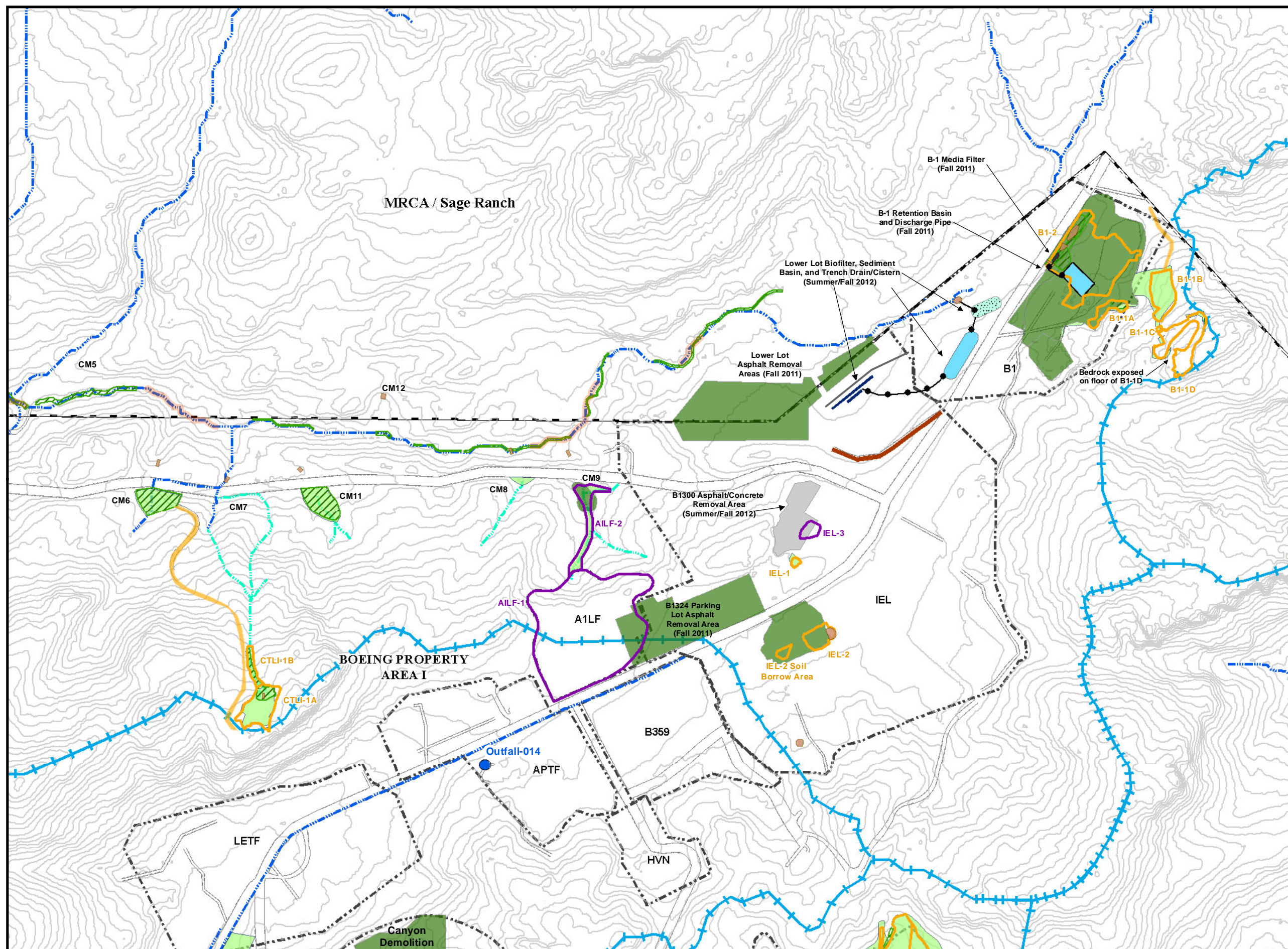
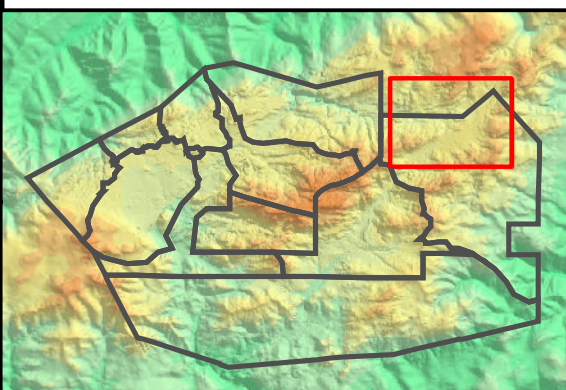
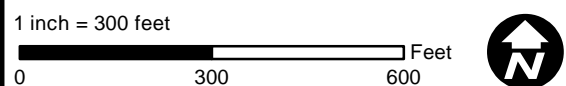
BMP Installations 2010-2012 Eastern Outfall 009 Watershed

- Base Map Legend**
- Administrative Area Boundary
 - RFI Site Boundary
 - NPDES Outfall
 - Non Jurisdictional Surface Water Pathway
 - Drainage
 - Surface Water Divide
 - A/C Paving
 - Dirt Road
 - Elevation Contour

- Data Legend**
- Actual ISRA Excavation Boundary
 - ISRA Areas planned for future remediation
 - Planned BMP Activities
 - Planting Area
 - Hydroseed 2011/2012
 - Hydroseed 2010/2011
 - Road Abandonment and Restoration
 - Road Erosion Control Measures
 - Retention/Sediment Basins
 - Bio Filter
 - Northern Drainage RMMP Areas (Summer/Fall 2012)
 - Wooden Retaining Wall Maintenance and Repair (Winter 2012)
 - Rock Placement
 - BMP Stormwater Conveyance Pipeline
 - B-1 Area Stormwater Conveyance Pipelines (estimated subsurface trace)
 - 6-inch Concrete Curb
 - Trench Drain/Cistern

- Figure Notes:**
- Topographic contours from 2010 Sage Consultants, Inc.
 - Hydroseed areas may also have additional sediment and erosion control BMPs installed within the area shown (can include fiber rolls, silt fencing, hay bales, or other controls).
 - Covered the weir boards at CM-1, CM-2, CM-3, CM-4, CM-6, CM-8, CM-9, and CM-10 with filter fabric to facilitate ponding behind the boards and increase flow through filter media beds (Fall 2011).

Path: T:\projects\rock3\ISRA\Figures\Outfall-009\Hydroseeding_East_rev.mxd Date: 8/29/2012



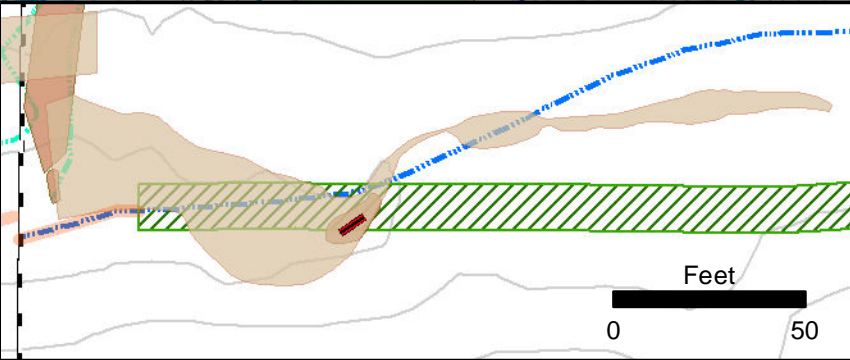
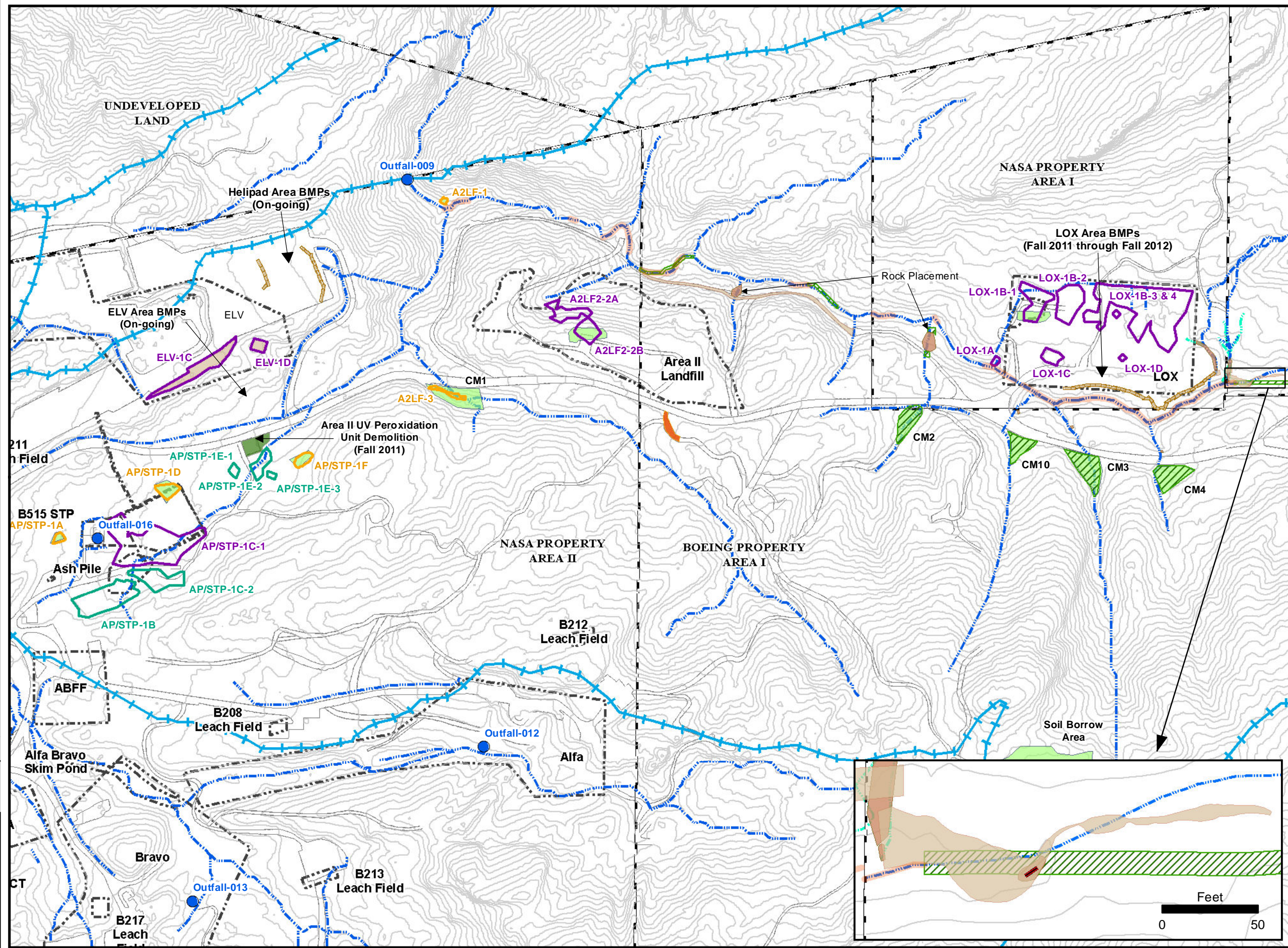
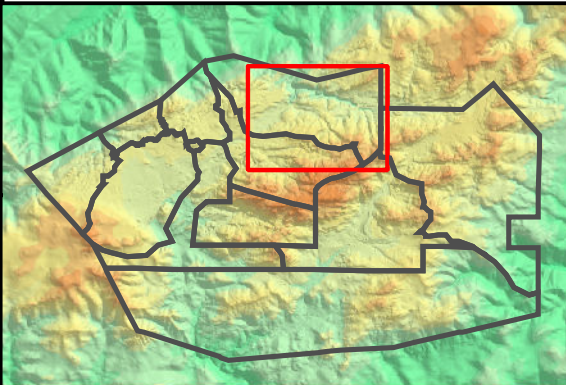
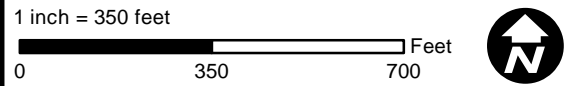
BMP Installations 2010-2012 Western Outfall 009 Watershed

- Base Map Legend**
- Administrative Area Boundary
 - RFI Site Boundary
 - NPDES Outfall
 - Drainage
 - Non Jurisdictional Surface Water Pathway
 - Surface Water Divide
 - A/C Paving
 - Dirt Road
 - Elevation Contour

- Data Legend**
- Actual ISRA Excavation Boundary
 - ISRA Areas planned for future remediation
 - ISRA Areas with remediation in progress
 - Planting Area
 - Hydroseed 2011/2012
 - Hydroseed 2010/2011
 - Road Abandonment and Restoration
 - Rock Placement
 - Erosion Control Fabric
 - Northern Drainage RMMP (Summer 2012)
 - Sandbag Berm

- Figure Notes:**
- Topographic contours from 2010 Sage Consultants, Inc.
 - Hydroseed areas may also have additional sediment and erosion control BMPs installed within the area shown (can include fiber rolls, silt fencing, hay bales, or other controls).
 - Covered the weir boards at CM-1, CM-2, CM-3, CM-4, CM-6, CM-8, CM-9, and CM-10 with filter fabric to facilitate ponding behind the boards and increase flow through filter media beds (Fall 2011).

Path: T:\projects\rock3\ISRA\Figures\Outfall-009\Hydroseeding_West_revDT.rDate: 8/29/2012



Outfalls 008 and 009 Potential BMP and Performance Monitoring Locations

Base Map Legend

- Administrative Area Boundary
- RFI Site Boundary
- Subwatershed Boundaries
- NPDES Outfall
- Non Jurisdictional Surface Water Pathway
- Surface Water Divide
- Drainage

Figure Legend

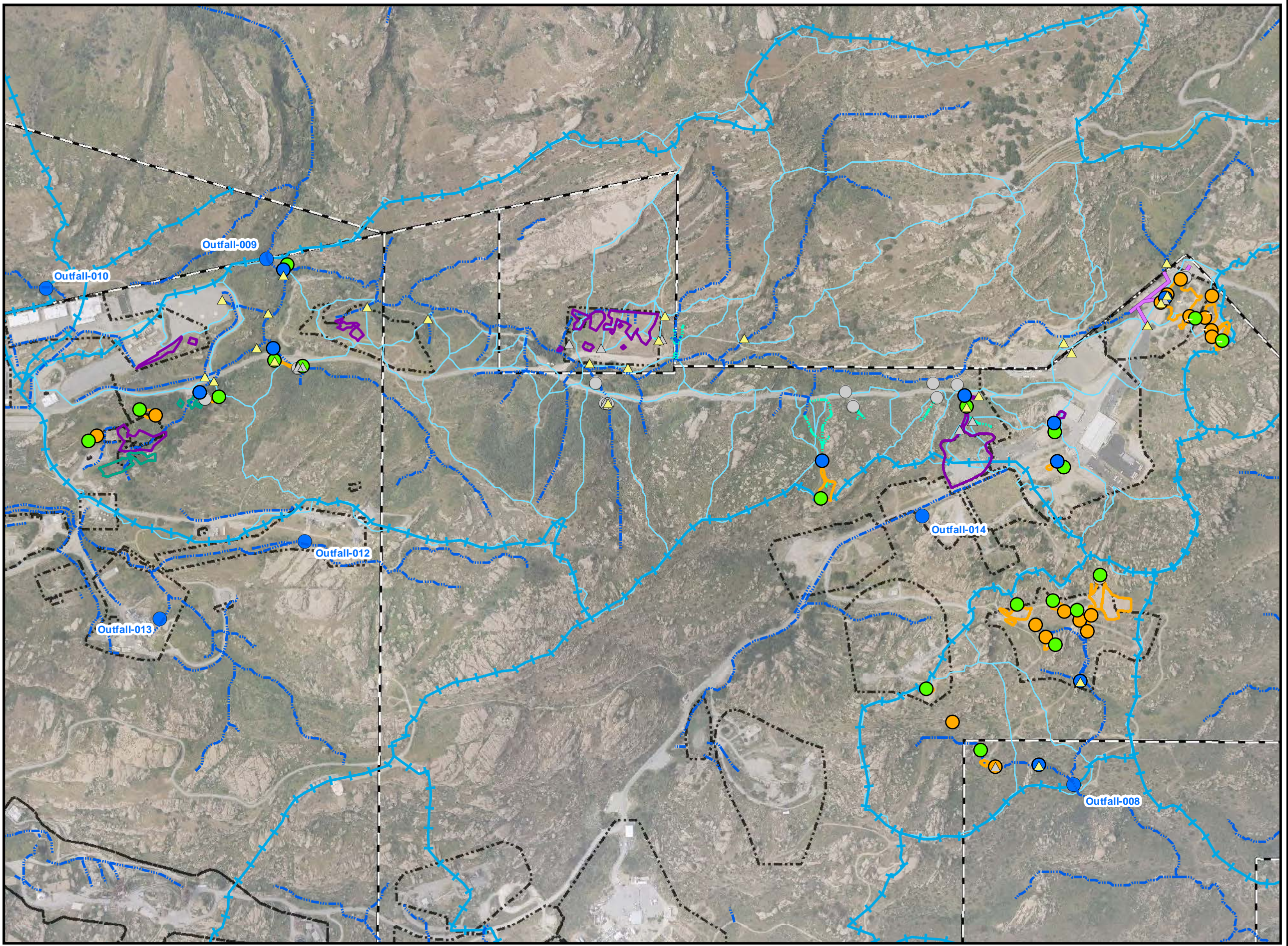
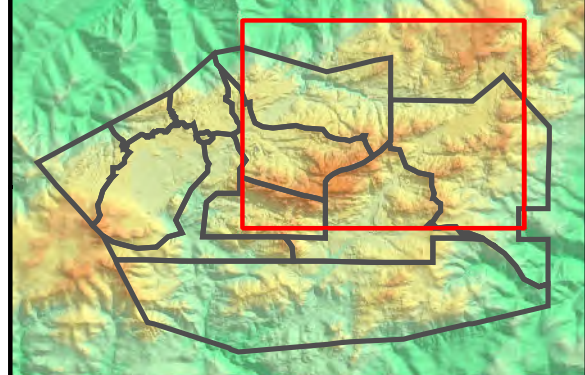
- Primary Downstream Performance Monitoring Location
- Upstream Performance Monitoring Location
- Secondary Performance Monitoring Location
- Discontinued Performance Monitoring Location
- Potential BMP Subarea Monitoring Location
- Discontinued Potential BMP Subarea Monitoring Location
- ISRA Excavation Boundary
- Planned ISRA Area Boundary
- ISRA Areas with remediation in progress
- B-1 Area Stormwater Conveyance Pipelines (estimated subsurface trace)

Note:

1. Aerial imagery from 2010 Sage Consulting.
2. Topographic contours from 2010 Sage Consulting.
3. Rationale for discontinuing monitoring at previous sample locations can be found in the text and/or tables of the 2011/2012 Rainy Season Sampling and Analysis Plan.
4. Inspection/sampling at offsite monitoring locations subject to property owner approval.

Path: T:\projects\rock3\ISRA\Figures\PerfMon\Overview_11x17.mxd Date: 8/20/2012

1 inch = 700 feet



Outfall 008 Potential BMP and Performance Monitoring Locations

Base Map Legend

- Administrative Area Boundary
- RFI Site Boundary
- Drainage
- Non Jurisdictional Surface Water Pathway
- Surface Water Divide

Figure Legend

- Primary Downstream Performance Monitoring Location
- Upstream Performance Monitoring Location
- Secondary Performance Monitoring Location
- Discontinued Performance Monitoring Location
- Potential BMP Subarea Monitoring Location
- Discontinued Potential BMP Subarea Monitoring Location
- ISRA Excavation Boundary

S001 12-7-09 Performance Monitoring sample ID suffix and collection date

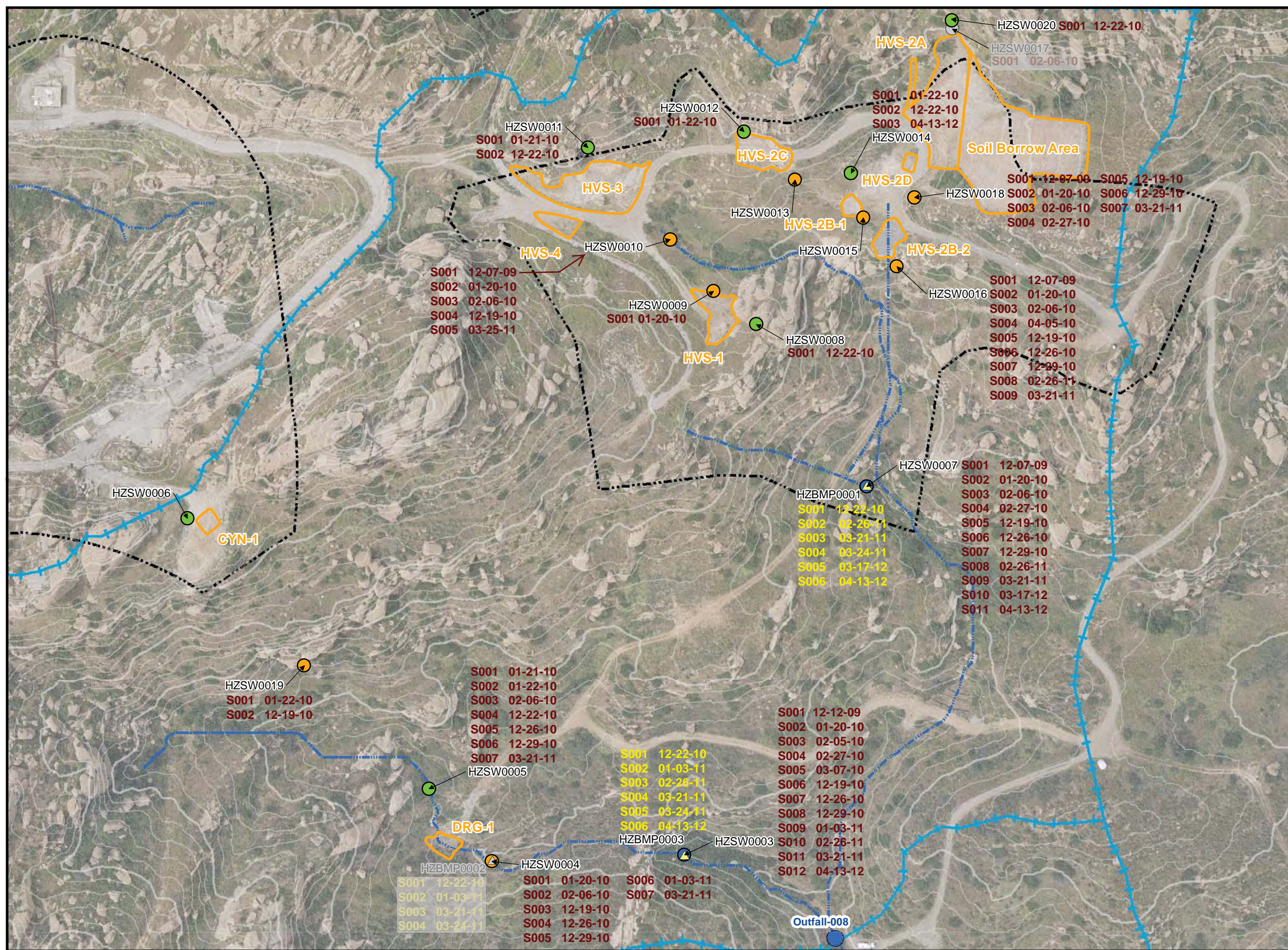
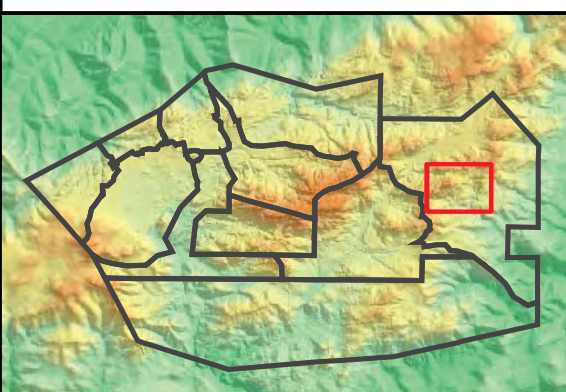
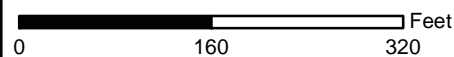
S001 12-22-10 Potential BMP Subarea Monitoring sample ID suffix and collection date

Note:
Performance monitoring and potential BMP subarea monitoring inspections were performed at locations shown on this figure during daylight hours as soon as possible after the rain event began, and at 24 hour intervals during extended rain events. During inspections, if sufficient storm water runoff was observed at a sample location, a sample was collected. The dates on which samples were collected are shown on the Figure; locations with no dates have never been sampled.

- Note:**
1. Aerial imagery from 2010 Sage Consulting.
 2. Topographic contours from 2010 Sage Consulting.
 3. Rationale for discontinuing monitoring at previous sample locations can be found in the text and/or tables of the 2011/2012 Rainy Season Sampling and Analysis Plan.
 4. Inspection/sampling at offsite monitoring locations subject to property owner approval.

Path: T:\projects\rock3\ISRA\Figures\PerfMon\HVS.mxd Date: 7/18/2012

1 inch = 160 feet



Outfall 009 Potential BMP and Performance Monitoring Locations B-1 Area

Base Map Legend

- Administrative Area Boundary
- RFI Site Boundary
- Drainage
- Non Jurisdictional Surface Water Pathway
- Surface Water Divide

Figure Legend

- Primary Downstream Performance Monitoring Location
- Upstream Performance Monitoring Location
- Secondary Performance Monitoring Location
- Discontinued Performance Monitoring Location
- Potential BMP Subarea Monitoring Location
- Discontinued Potential BMP Subarea Monitoring Location
- ISRA Excavation Boundary
- B-1 Area Stormwater Conveyance Pipelines (estimated subsurface trace)

S001 12-7-09 Performance Monitoring sample ID suffix and collection date

S001 12-23-10 Potential BMP Subarea Monitoring sample ID suffix and collection date

Note: Performance monitoring and potential BMP subarea monitoring inspections were performed at locations shown on this figure during daylight hours as soon as possible after the rain event began, and at 24 hour intervals during extended rain events. During inspections, if sufficient storm water runoff was observed at a sample location, a sample was collected. The dates on which samples were collected are shown on the Figure; locations with no dates have never been sampled.

Note:

1. Aerial imagery from 2010 Sage Consulting.
2. Topographic contours from 2010 Sage Consulting.
3. Rationale for discontinuing monitoring at previous sample locations can be found in the text and/or tables of the 2011/2012 Rainy Season Sampling and Analysis Plan.
4. Inspection/sampling at offsite monitoring locations subject to property owner approval.

Path: T:\projects\rock3\ISRA\Figures\PerfMon\B1.mxd

Date: 8/20/2012

1 inch = 120 feet
0 100 200 Feet

