

APPENDIX A

STORMWATER BMP CONCEPT DESIGNS

FOR

SANTA SUSANA SITE

WATERSHED 009, NASA AND BOEING PROPERTIES

(ALL CONCEPTS SUBJECT TO MODIFICATION WITH ADDITIONAL ENGINEERING ANALYSIS)

SEPTEMBER 2012

NOTES:

1. AERIAL IMAGERY USED FOR BASE PLANS HEREIN WAS PROVIDED BY MWH GLOBAL, INC. AND WAS FLOWN ON JUNE 2, 2010.
2. CONTOUR DATA SHOWN REPRESENT 1 FT ELEVATION DATA PROVIDED BY MWH GLOBAL, INC.
3. PROPOSED BMP FEATURES AND FOOTPRINTS ARE APPROXIMATE AND, UNLESS OTHERWISE NOTED, ARE INTENDED TO REFLECT INITIAL SIZING BASED ON SURFACE WATER EXPERT PANEL'S SITE-SPECIFIC SIZING (1 YEAR, 24 HOUR STORM EVENT) AND GENERAL GUIDANCE FROM THE VENTURA COUNTY TECHNICAL GUIDANCE MANUAL.
4. DRAWINGS ARE FOR DESIGN CONCEPT ILLUSTRATION ONLY, ARE PRELIMINARY, SUBJECT TO CHANGE, AND ARE NOT FOR CONSTRUCTION.
5. BIOLOGICAL AND UTILITY SURVEYS REQUIRED AT MOST LOCATIONS. ENGINEERING/CONSTRUCTION FEASIBILITY ASSESSMENT ALSO REQUIRED. COUNTY GRADING AND BUILDING/CONSTRUCTION PERMITS AS WELL AS PERMITS ASSOCIATED WITH WORK IN JURISDICTIONAL DRAINAGE ALSO NEED TO BE CONSIDERED.
6. BMPS SITED ON NASA PROPERTY ARE EXPECTED TO BE DESIGNED BY CH2MHILL.
7. DRAINAGE FEATURES SHOWN REFLECT GENERAL STORMWATER RUNOFF CONVEYANCE PATHWAYS AND DO NOT NECESSARILY REPRESENT JURISDICTIONAL DRAINAGE FEATURES.

DRAWING INDEX

DRAWING NO.	TITLE
1	TITLE SHEET
2	LOCUS AND KEY MAP
3	ELV AREA BMPS
4	24-INCH CULVERT DRAINAGE AREA BMPS
5	B1 MEDIA FILTER BMPS
6	CM9 ROAD RUNOFF

LEGEND

EXISTING CONDITIONS

	DRAINAGE (SEE NOTE 7)
	PROPERTY LINE
	DRAIN PIPE
	ISRA BOUNDARY
	RFI BOUNDARY
	SUBCATCHMENT BOUNDARY
	WATERSHED 009 BOUNDARY
	EASEMENT BOUNDARY (COLOR VARIES FOR CLARITY)
	BMP SUBAREA MONITORING LOCATION
	RIPRAP
	MONITORING WELL
	UTILITY POLE

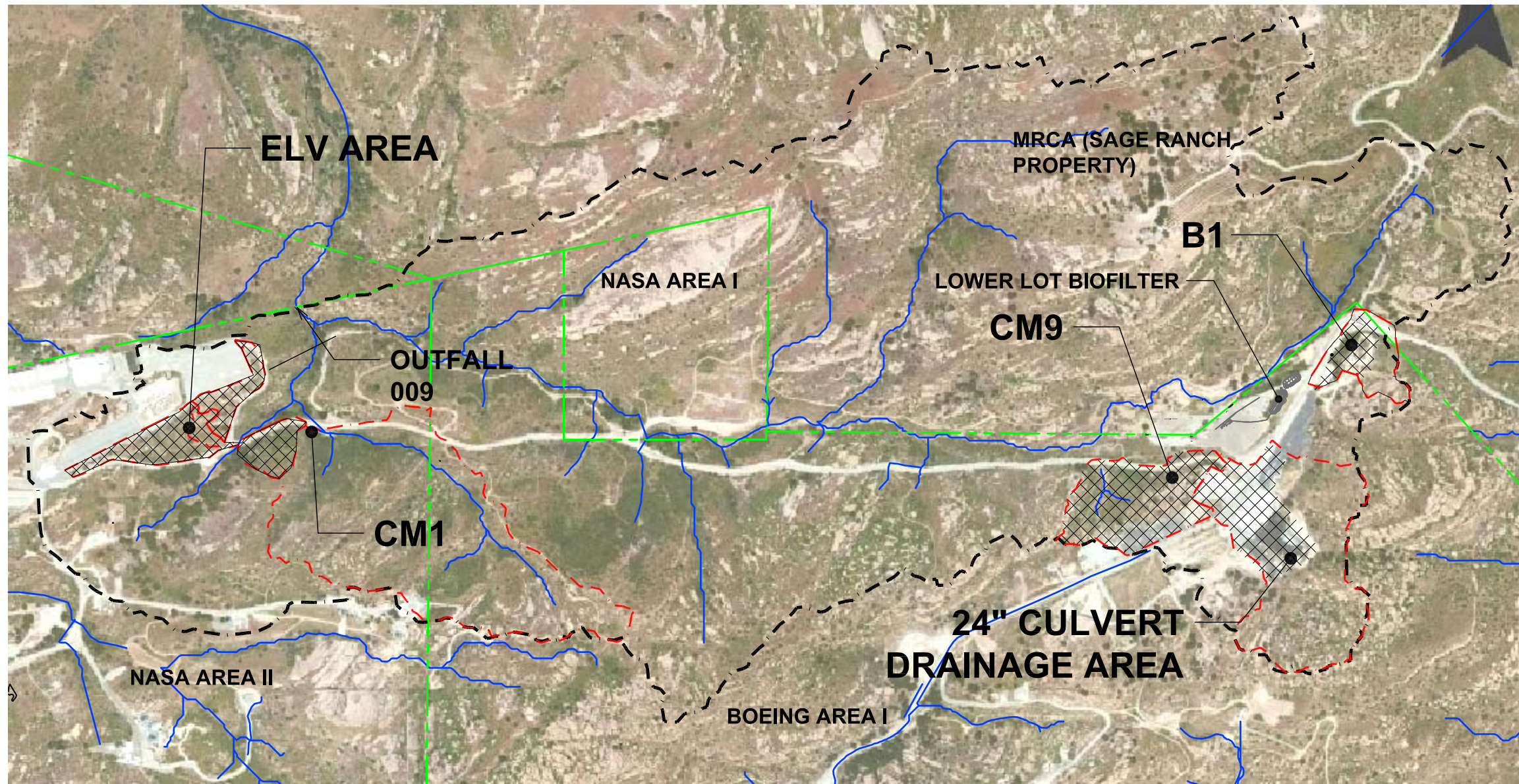
PROPOSED CONDITIONS

	DRAIN PIPE
	SANDBAG / EARTH BERM
	CHANNEL RECONSTRUCTION
	VEGETATED SWALE
	RIPRAP
	ASPHALT REMOVAL
	FILTER/BASIN WATER SURFACE LEVEL AT OVERFLOW INVERT
	GEOCELL BACKFILLED WITH GRAVEL
	FLOW DIRECTION

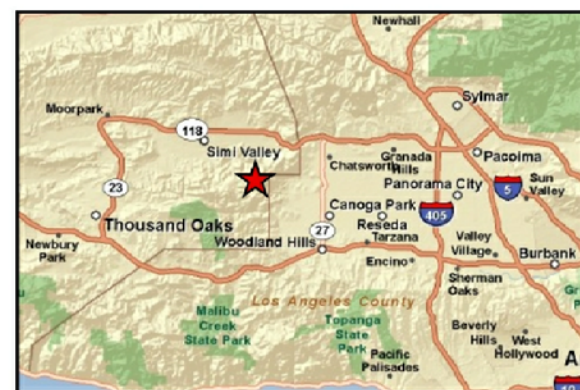
L:\PROJECT FOLDERS\BOEING\SB0363S BOEING STORMWATER 2012\CADD\CONCEPTUAL DESIGN\092512\SB0636S--1001 NASA CONCEPT BMP DESIGNS

TITLE:	TITLE SHEET	PREPARED BY: Geosyntec 924 ANACAPA STREET, SUITE 4A SANTA BARBARA, CA 93101 PHONE: 805.897.3800	PREPARED FOR: BOEING NASA SANTA SUSANA SITE VENTURA COUNTY, CALIFORNIA	PROJECT: STORMWATER BMP CONCEPT DESIGNS SANTA SUSANA SITE WATERSHED 009	DESIGNED BY: AQ	REVIEWED BY: DHB	DATE: SEPT 2012	DRAWING: 1
					DRAWN BY: AQ	APPROVED BY: BS	PROJ. NO.: SB0363S	

L:\PROJECT FOLDERS\BOEING\SB0363S BOEING STORMWATER 2012\CADD\CONCEPTUAL DESIGN\091312\SHEET 2 - LOCUS PLAN



- LEGEND:**
- PROPERTY BOUNDARY
 - - - 009 WATERSHED BOUNDARY
 - - - SUBCATCHMENT BOUNDARY
 - X X X X AREA TREATED BY NEW RECOMMENDED BMPS



TITLE: **LOCUS AND KEY MAP**

PREPARED BY:
Geosyntec consultants
 924 ANACAPA STREET, SUITE 4A
 SANTA BARBARA, CA 93101
 PHONE: 805.897.3800

PREPARED FOR:

 BOEING NASA
 SANTA SUSANA SITE
 VENTURA COUNTY, CALIFORNIA

PROJECT:
**STORMWATER BMP CONCEPT DESIGNS
 SANTA SUSANA SITE WATERSHED 009**

DESIGNED BY:
AQ

DRAWN BY:
AQ

REVIEWED BY:
DHB

APPROVED BY:
BS

DATE:
SEPT 2012

PROJ. NO.:
SB0363S

DRAWING:
2