

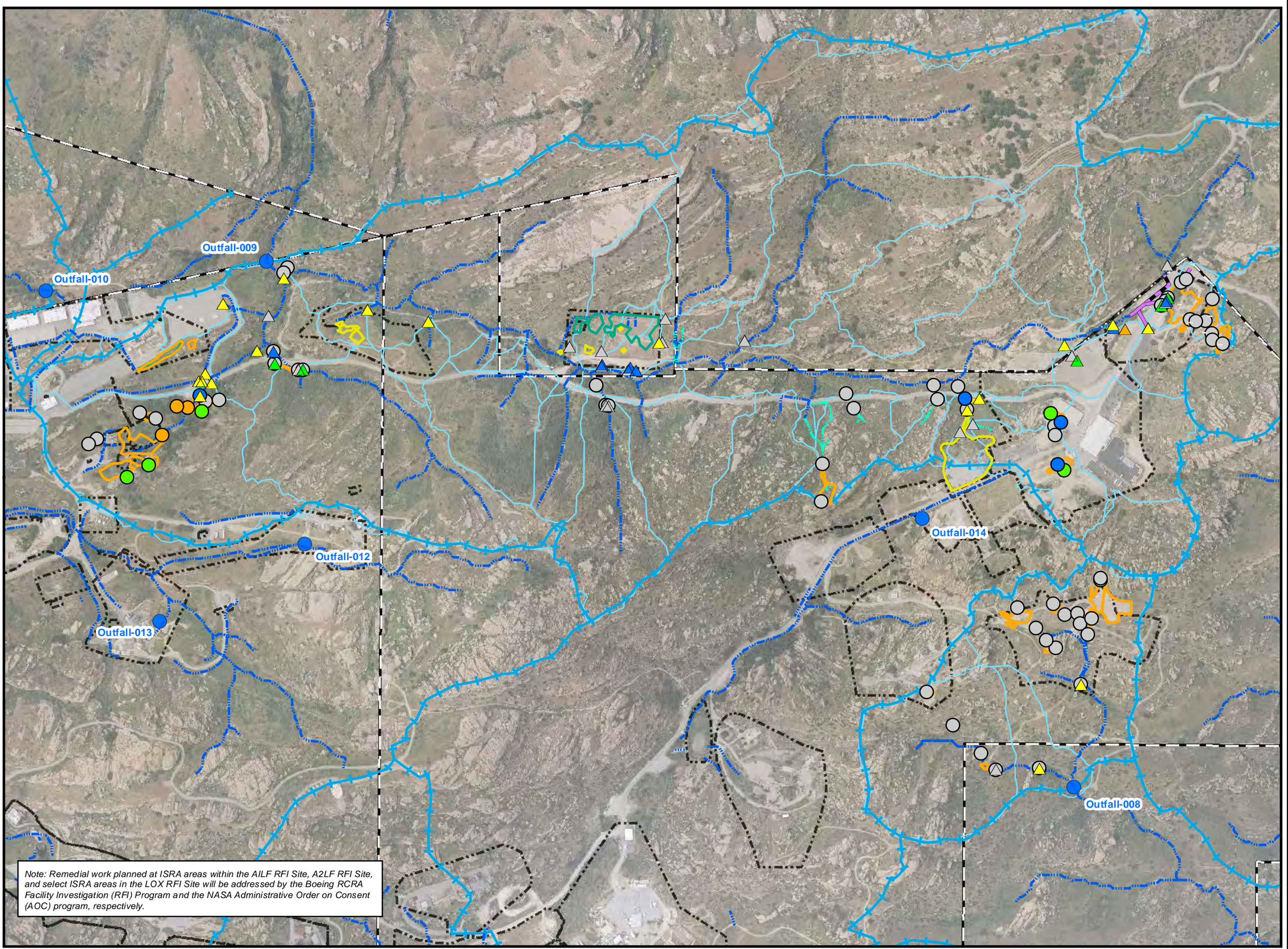
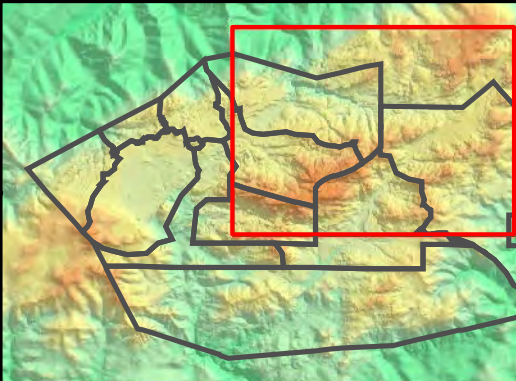
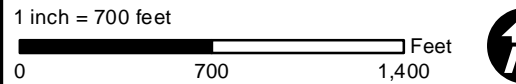
Outfalls 008 and 009 BMP and Performance Monitoring Locations

- Base Map Legend**
- Administrative Area Boundary
 - RFI Site Boundary
 - Subwatershed Boundaries
 - NPDES Outfall
 - Non Jurisdictional Surface Water Pathway
 - Surface Water Divide
 - Drainage

- Figure Legend**
- Primary Downstream Performance Monitoring Location
 - Upstream Performance Monitoring Location
 - Secondary Performance Monitoring Location
 - Discontinued Performance Monitoring Location
 - Potential BMP Subarea Monitoring Location
 - Downstream Treatment BMP Monitoring Location
 - Upstream Treatment BMP Monitoring Location
 - Intermediate Treatment BMP Monitoring Location
 - Discontinued Potential BMP Subarea Monitoring Location
 - B-1 Area Stormwater conveyance Pipelines (estimated subsurface trace)
 - Inferred Stormwater Conveyance Pipeline
 - Actual ISRA Excavation Boundary
 - ISRA Area with Remediation in Progress
 - Planned ISRA Area Excavation
 - Former Planned ISRA Excavation Area

- Note:**
1. Aerial imagery from 2010 Sage Consulting.
 2. Topographic contours from 2010 Sage Consulting.
 3. Rationale for discontinuing monitoring at previous sample locations can be found in the text and/or tables of the 2012/2013 Rainy Season Sampling and Analysis Plan.
 4. Inspection/sampling at offsite monitoring locations subject to property owner approval.

Path: \\SD-004\g\projects\rock3\ISRA\Figures\PerfMon\2012-2013 Rainy Season\Overview_11x17_Fig1.mxd
Date: 8/28/2013



Note: Remedial work planned at ISRA areas within the AILF RFI Site, A2LF RFI Site, and select ISRA areas in the LOX RFI Site will be addressed by the Boeing RCRA Facility Investigation (RFI) Program and the NASA Administrative Order on Consent (AOC) program, respectively.



Outfall 008 BMP and Performance Monitoring Locations

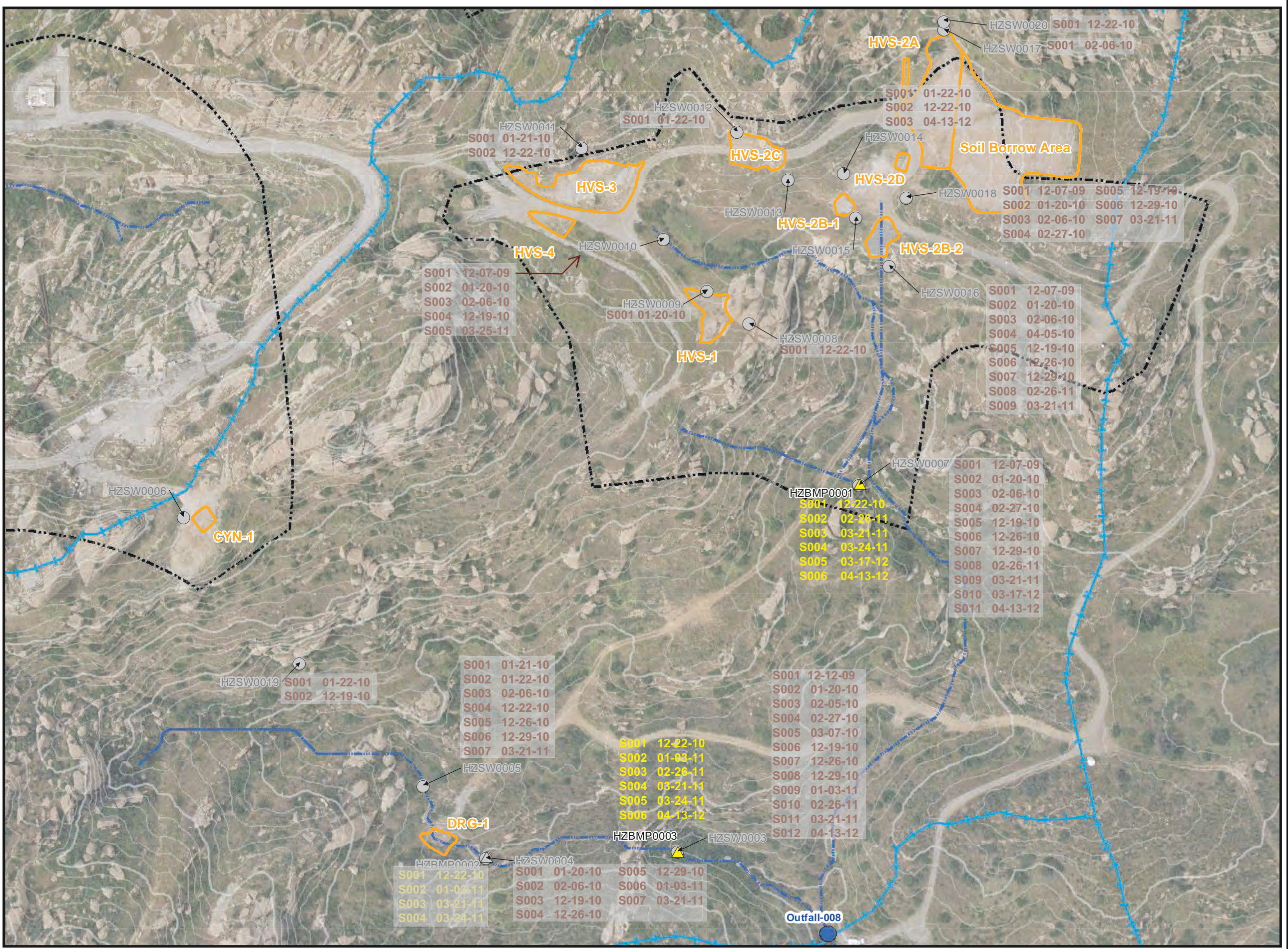
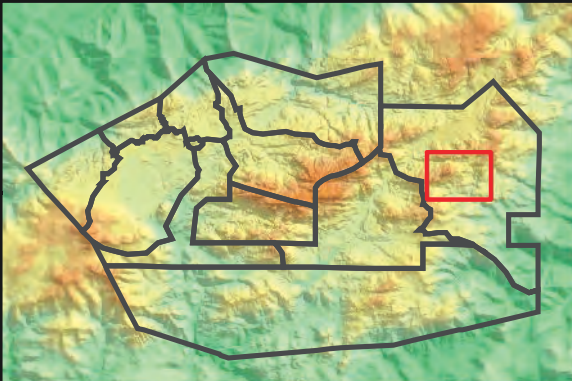
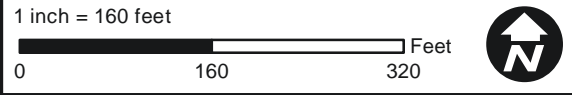
- Base Map Legend**
- Administrative Area Boundary
 - RFI Site Boundary
 - Drainage
 - Non Jurisdictional Surface Water Pathway
 - Surface Water Divide

- Figure Legend**
- Discontinued Performance Monitoring Location
 - Potential BMP Subarea Monitoring Location
 - Discontinued Potential BMP Subarea Monitoring Location
 - ISRA Excavation Boundary

Note:

1. Aerial imagery from 2010 Sage Consulting.
2. Topographic contours from 2010 Sage Consulting.
3. Rationale for discontinuing monitoring at previous sample locations can be found in the text and/or tables of the 2012/2013 Rainy Season Sampling and Analysis Plan.
4. Inspection/sampling at offsite monitoring locations subject to property owner approval.

Path: T:\projects\rock3\ISRA\Figures\PerfMon\2012-2013 Rainy Season\HVS_Fig2-1.mxd Date: 8/11/2013



Outfall 009 BMP and Performance Monitoring Locations B-1 and Lower Parking Lot Areas

Base Map Legend

- Administrative Area Boundary
- RFI Site Boundary
- Drainage
- Non Jurisdictional Surface Water Pathway
- Surface Water Divide

Figure Legend

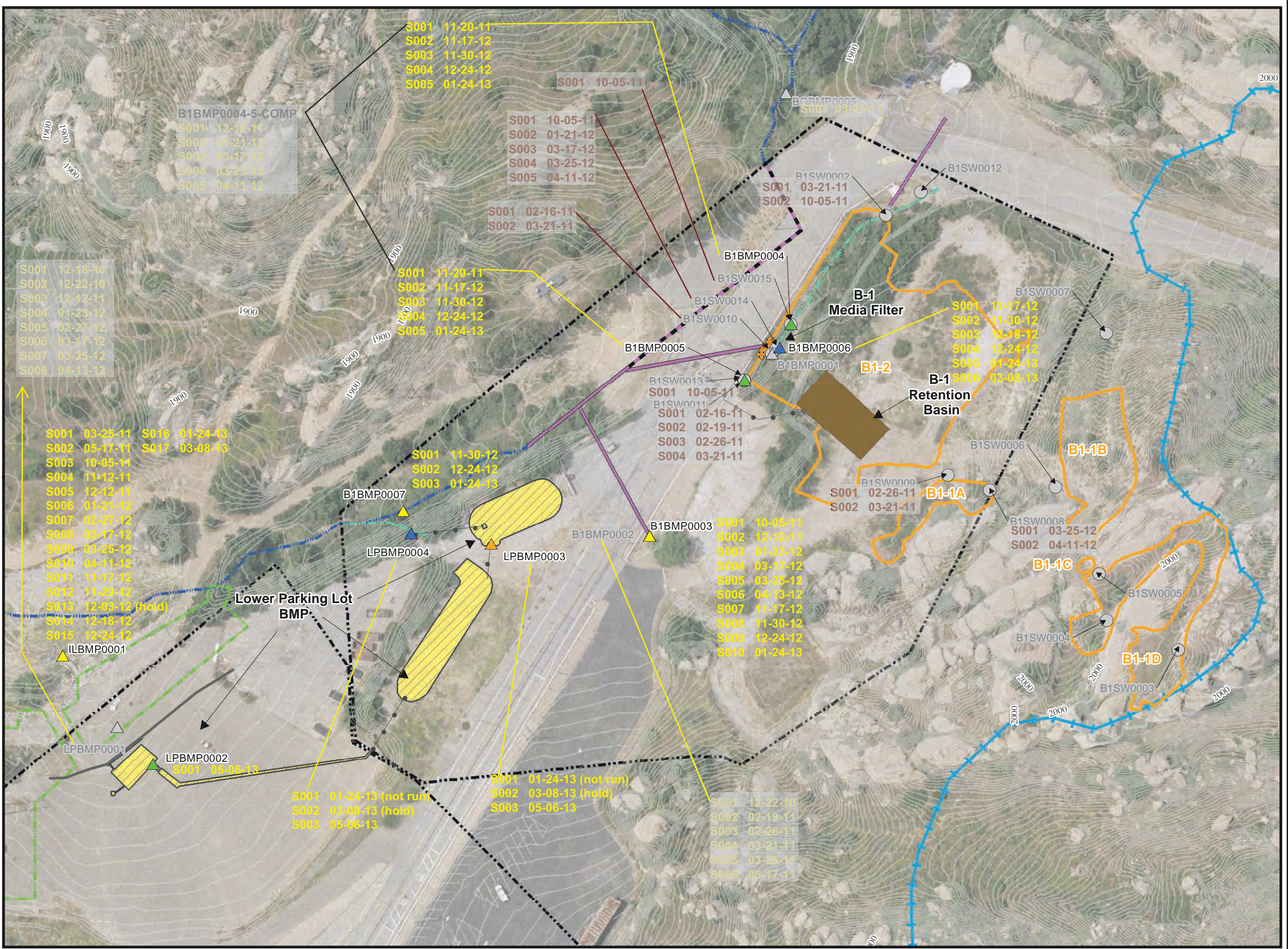
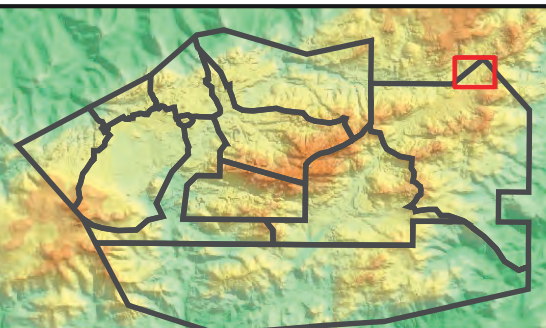
- Discontinued Performance Monitoring Location
- Potential BMP Subarea Monitoring Location
- Downstream Treatment BMP Monitoring Location
- Upstream Treatment BMP Monitoring Location
- Intermediate Treatment BMP Monitoring Location
- Discontinued Potential BMP Subarea Monitoring Location
- ISRA Excavation Boundary
- Asphalt/Concrete Removal Area
- Media Filters
- Retention Basin
- Engineered Natural Treatment System
- Storm Drain (estimated subsurface trace)
- Storm Drain inferred
- Concrete Curb
- Conveyance Pipeline

Note:

- Aerial imagery from 2010 Sage Consulting.
- Topographic contours from 2010 Sage Consulting.
- Rationale for discontinuing monitoring at previous sample locations can be found in the text and/or tables of the 2012/2013 Rainy Season Sampling and Analysis Plan.
- Inspection/sampling at offsite monitoring locations subject to property owner approval.

Path: T:\projects\rock3\ISRA\Figures\PerfMon\2012-2013 Rainy Season\B1_Fig2-2.mxd Date: 8/13/2013

1 inch = 100 feet



Outfall 009 BMP and Performance Monitoring Locations AILF and IEL Areas

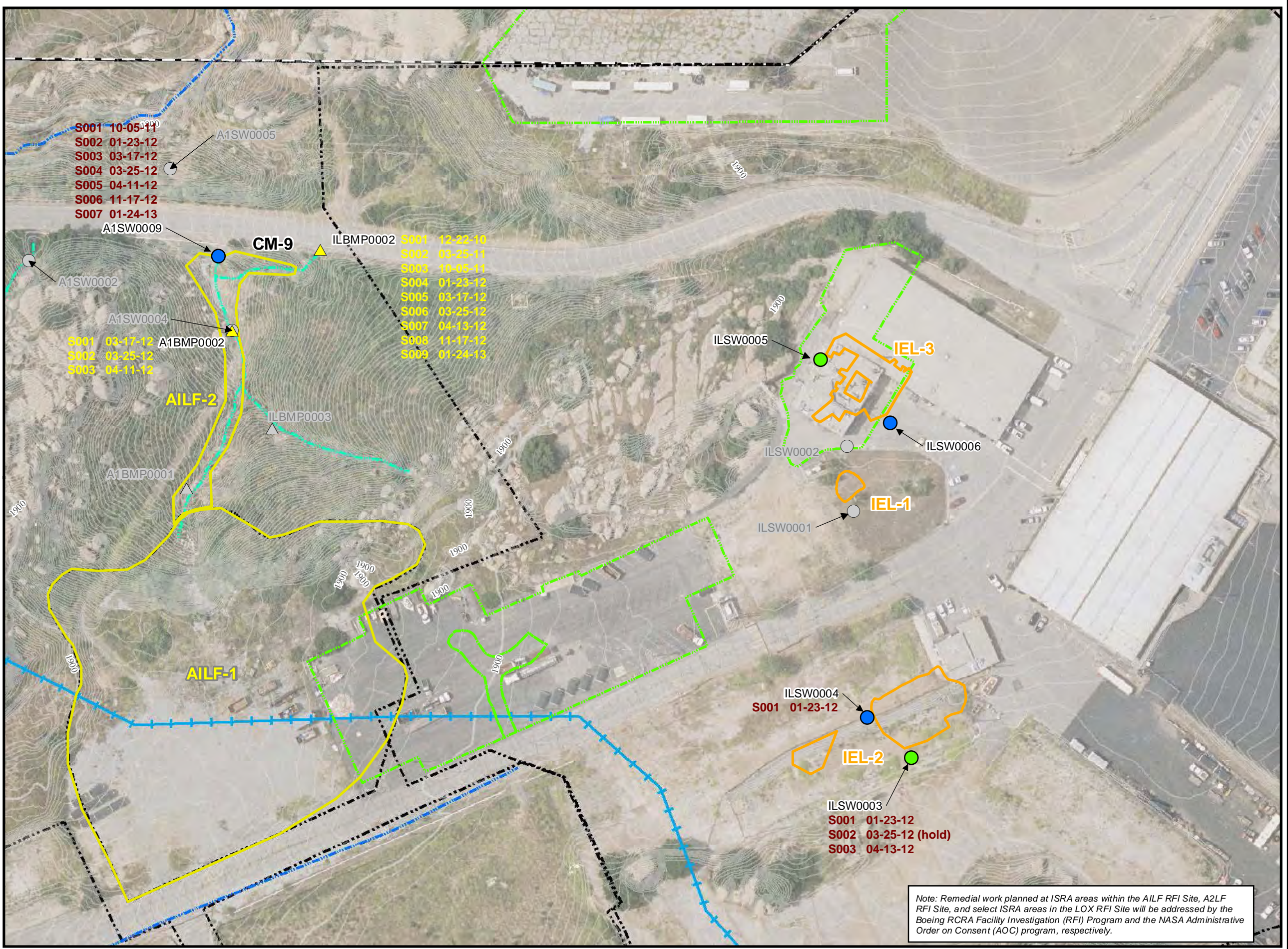
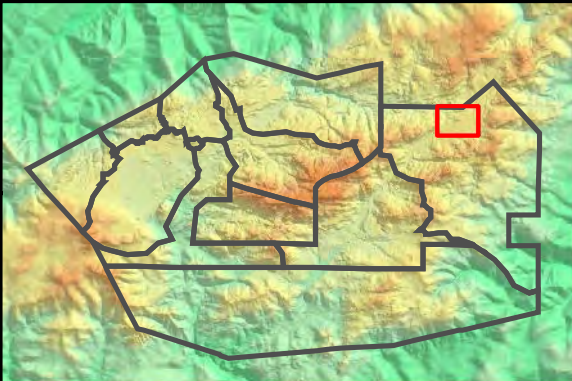
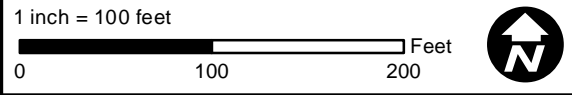
- Base Map Legend**
- Administrative Area Boundary
 - Non Jurisdictional Surface Water Pathway
 - RFI Site Boundary
 - Surface Water Divide
 - Drainage

- Figure Legend**
- Primary Downstream Performance Monitoring Location
 - Upstream Performance Monitoring Location
 - Discontinued Performance Monitoring Location
 - Potential BMP Subarea Monitoring Location
 - Discontinued Potential BMP Subarea Monitoring Location
 - ISRA Excavation Boundary
 - Planned ISRA Area Boundary
 - Former Planned ISRA Area Boundary
 - Asphalt/Concrete Removal Area

Note:

1. Aerial imagery from 2010 Sage Consulting.
2. Topographic contours from 2010 Sage Consulting.
3. Rationale for discontinuing monitoring at previous sample locations can be found in the text and/or tables of the 2012/2013 Rainy Season Sampling and Analysis Plan.
4. Inspection/sampling at offsite monitoring locations subject to property owner approval.

Path: \\SD-004\gisp\projects\Yock3\ISRA\Figures\PerfMon\2012-2013 Rainy Season\AILF_IEL1_Fig2-3.mxd
Date: 8/28/2013



Note: Remedial work planned at ISRA areas within the AILF RFI Site, A2LF RFI Site, and select ISRA areas in the LOX RFI Site will be addressed by the Boeing RCRA Facility Investigation (RFI) Program and the NASA Administrative Order on Consent (AOC) program, respectively.



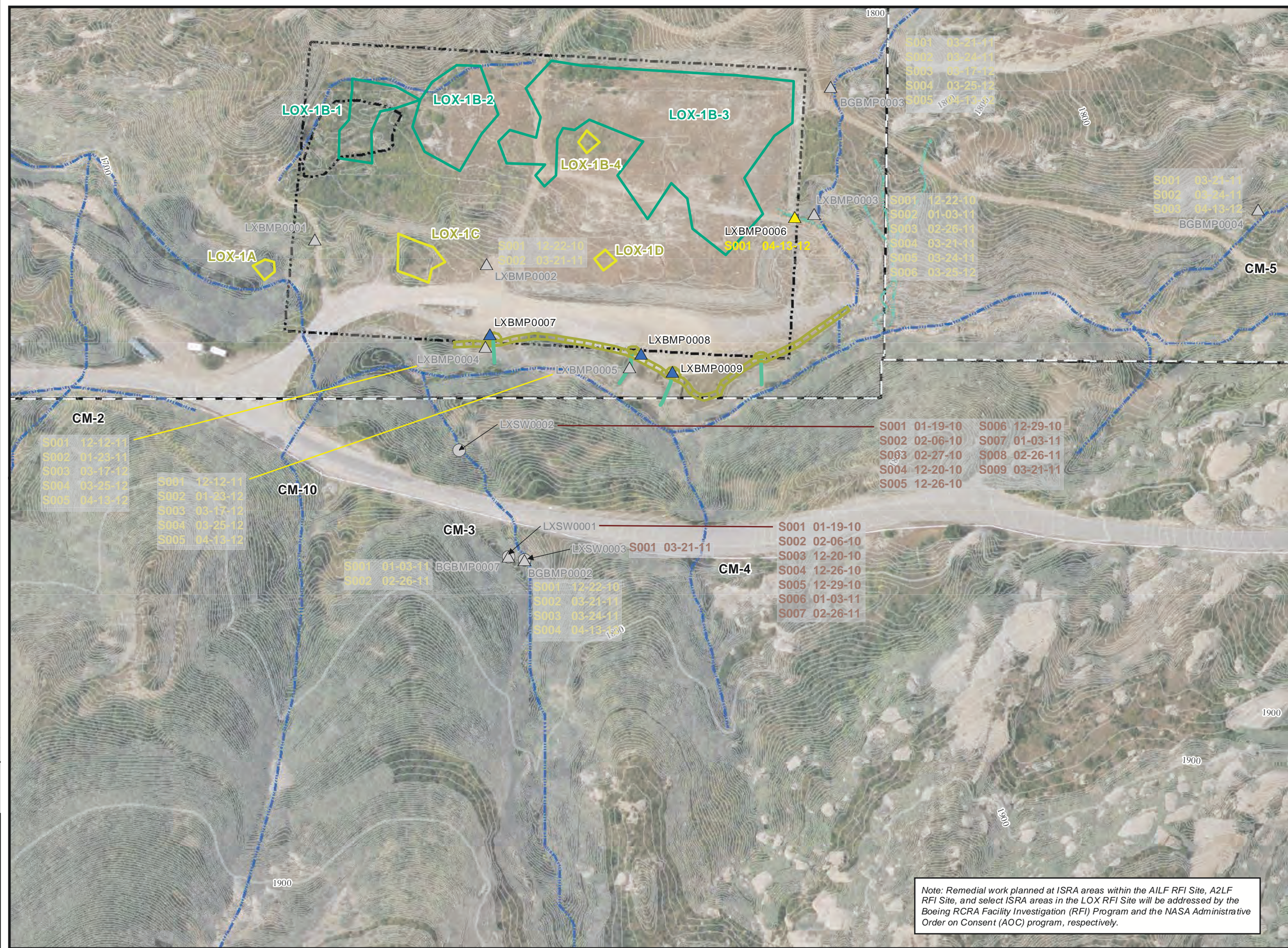
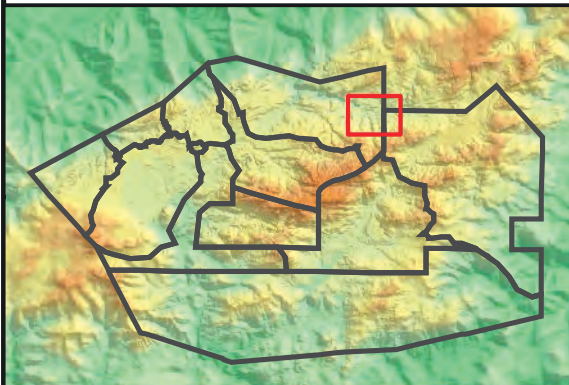
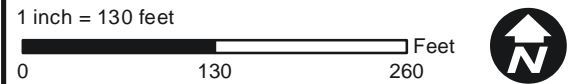
Outfall 009 BMP and Performance Monitoring Locations LOX Area

- Base Map Legend**
- Administrative Area Boundary
 - RFI Site Boundary
 - Drainage
 - Non Jurisdictional Surface Water Pathway
 - Surface Water Divide

- Figure Legend**
- Discontinued Performance Monitoring Location
 - Potential BMP Subarea Monitoring Location
 - Downstream Treatment BMP Monitoring Location
 - Discontinued Potential BMP Subarea Monitoring Location
 - ISRA Area with Remediation in Progress
 - Former Planned ISRA Excavation Area
 - Gravel Bag Berm
 - Slope Drain

- Note:**
- Aerial imagery from 2010 Sage Consulting.
 - Topographic contours from 2010 Sage Consulting.
 - Rationale for discontinuing monitoring at previous sample locations can be found in the text and/or tables of the 2012/2013 Rainy Season Sampling and Analysis Plan.
 - Inspection/sampling at offsite monitoring locations subject to property owner approval.

Path: \\SD-004\gisp\projects\rock3\ISRA\Figures\PerMon\2012-2013 Rainy Season\LOX_Fig2-4.mxd Date: 8/28/2013



Note: Remedial work planned at ISRA areas within the AILF RFI Site, A2LF RFI Site, and select ISRA areas in the LOX RFI Site will be addressed by the Boeing RCRA Facility Investigation (RFI) Program and the NASA Administrative Order on Consent (AOC) program, respectively.