

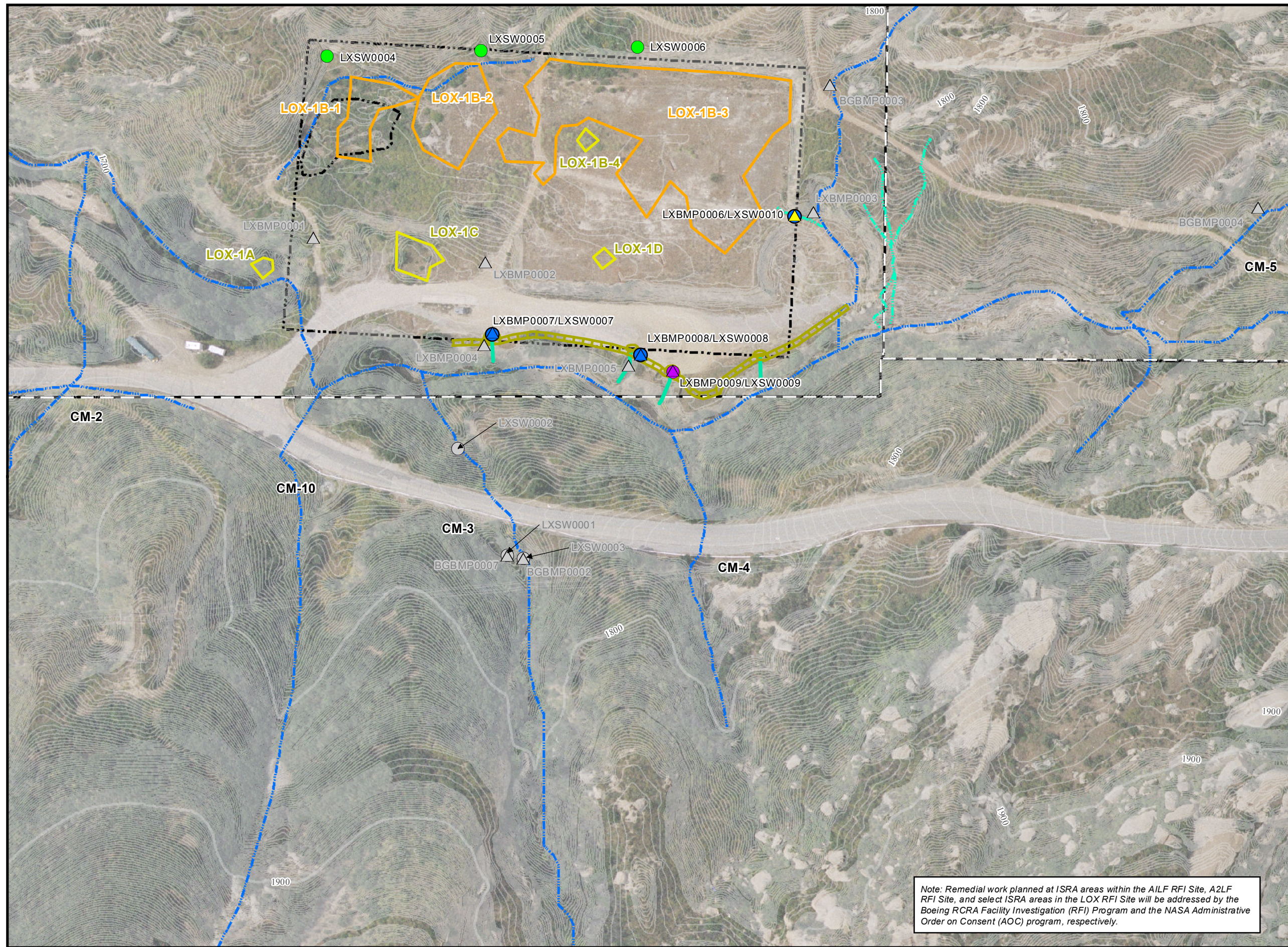
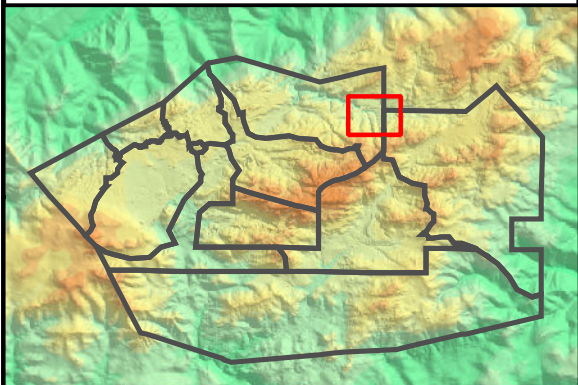
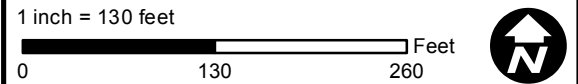
Outfall 009 BMP and Performance Monitoring Locations LOX Area

- Base Map Legend**
- Administrative Area Boundary
 - RF1 Site Boundary
 - Drainage
 - Non Jurisdictional Surface Water Pathway
 - Surface Water Divide

- Figure Legend**
- Primary Downstream Performance Monitoring Location
 - Upstream Performance Monitoring Location
 - Discontinued Performance Monitoring Location
 - Alternate Downstream Performance Monitoring Location
 - Potential BMP Subarea Monitoring Location
 - Downstream Treatment BMP Monitoring Location
 - Discontinued Potential BMP Subarea Monitoring Location
 - Alternate BMP Performance Monitoring Location
 - Actual ISRA Excavation Boundary
 - Former Planned ISRA Excavation Area
 - Gravel Bag Berm
 - Slope Drain

- Note:**
1. Aerial imagery from 2010 Sage Consulting.
 2. Topographic contours from 2010 Sage Consulting.
 3. Rationale for discontinuing monitoring at previous sample locations can be found in the text and/or tables of the 2010/2011, 2011/2012, 2012/2013, and 2013/2014 Rainy Season Sampling and Analysis Plan.
 4. Inspection/sampling at offsite monitoring locations subject to property owner approval.

Path: T:\projects\rock3\ISRA\Figures\PerfMon\2012-2013 Rainy Season\LOX_Fig5.mxd Date: 10/15/2014



Note: Remedial work planned at ISRA areas within the AILF RF1 Site, A2LF RF1 Site, and select ISRA areas in the LOX RF1 Site will be addressed by the Boeing RCRA Facility Investigation (RFI) Program and the NASA Administrative Order on Consent (AOC) program, respectively.



Outfall 009 BMP and Performance Monitoring Locations A2LF and ELV Areas

Base Map Legend

- Administrative Area Boundary
- Non Jurisdictional Surface Water Pathway
- RFI Site Boundary
- Surface Water Divide
- Drainage

Figure Legend

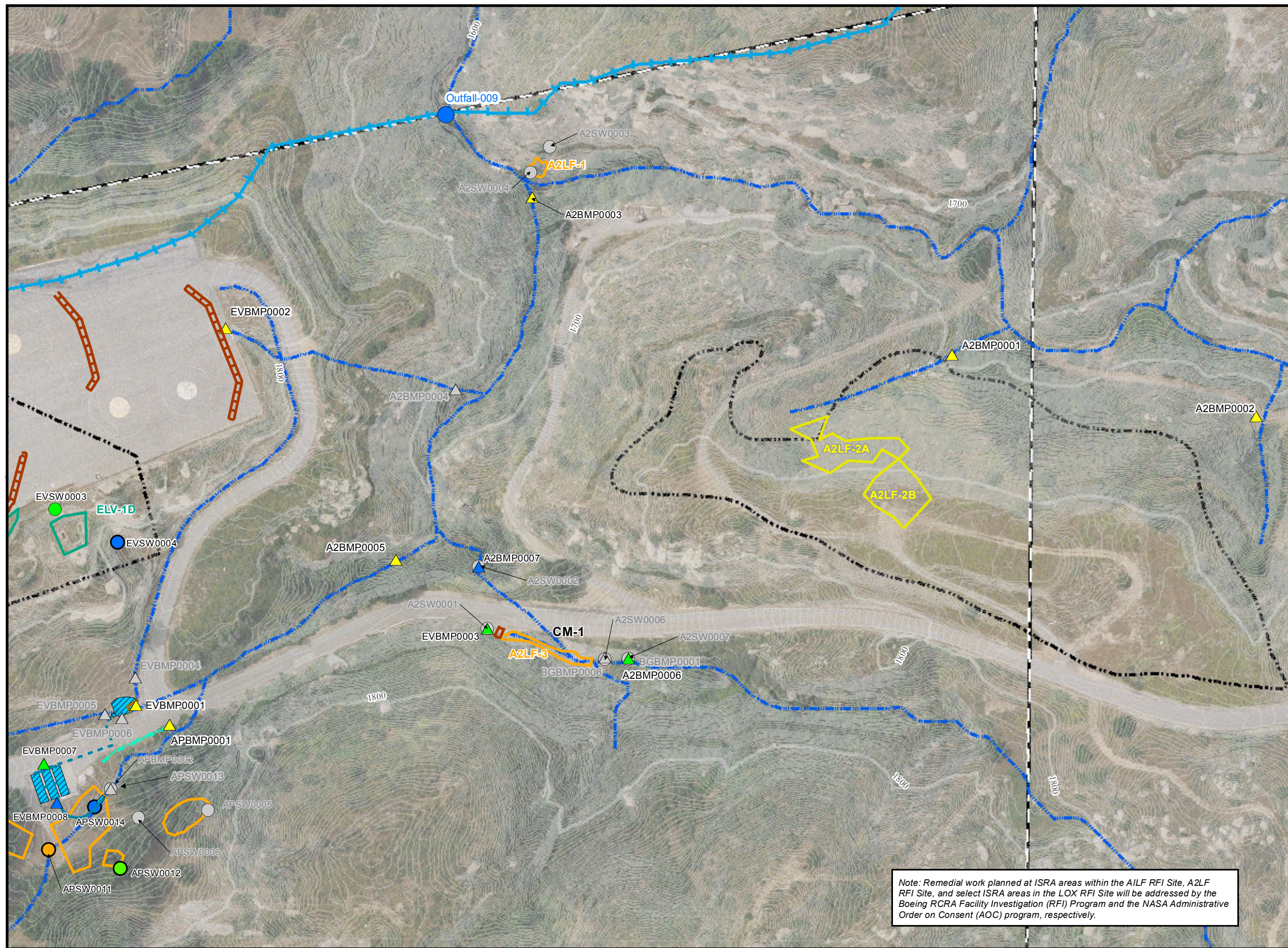
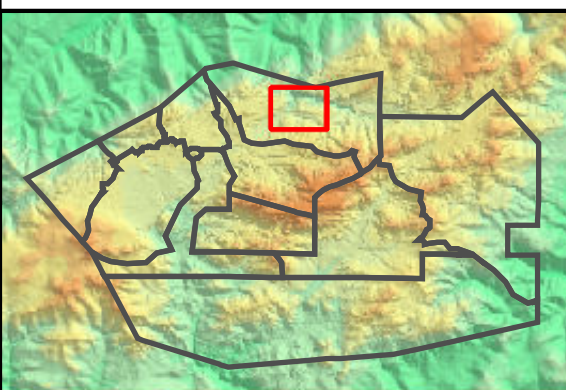
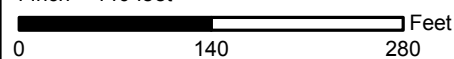
- Primary Downgradient Performance Monitoring Sample Location
- Upgradient Performance Monitoring Sample Location
- Secondary Performance Monitoring Sample Location
- Previous Performance Monitoring
- Potential BMP Subarea Monitoring Location
- Downstream Treatment BMP Monitoring Location
- Upstream Treatment BMP Monitoring Location
- Discontinued Potential BMP Subarea Monitoring Location
- Actual ISRA Excavation Boundary
- Former Planned ISRA Area Boundary
- ISRA Areas with Remediation/Restoration in Progress
- Sandbags
- Engineered Treatment System
- Engineered Treatment System-Headwall
- Engineered Treatment System-Pipeline (Aboveground)
- Engineered Treatment System-Pipeline (Belowground)

Note:

1. Aerial imagery from 2010 Sage Consulting.
2. Topographic contours from 2010 Sage Consulting.
3. Rationale for discontinuing monitoring at previous sample locations can be found in the text and/or tables of the 2010/2011, 2011/2012, 2012/2013, and 2013/2014 Rainy Season Sampling and Analysis Plan.
4. Inspection/sampling at offsite monitoring locations subject to property owner approval.

Path: T:\projects\rock3\ISRA\Figures\PerfMon\2012-2013 Rainy Season\A2LF_Fig6.mxd Date: 10/25/2013

1 inch = 140 feet



Note: Remedial work planned at ISRA areas within the AILF RFI Site, A2LF RFI Site, and select ISRA areas in the LOX RFI Site will be addressed by the Boeing RCRA Facility Investigation (RFI) Program and the NASA Administrative Order on Consent (AOC) program, respectively.

Outfall 009 BMP and Performance Monitoring Locations AP/STP Area

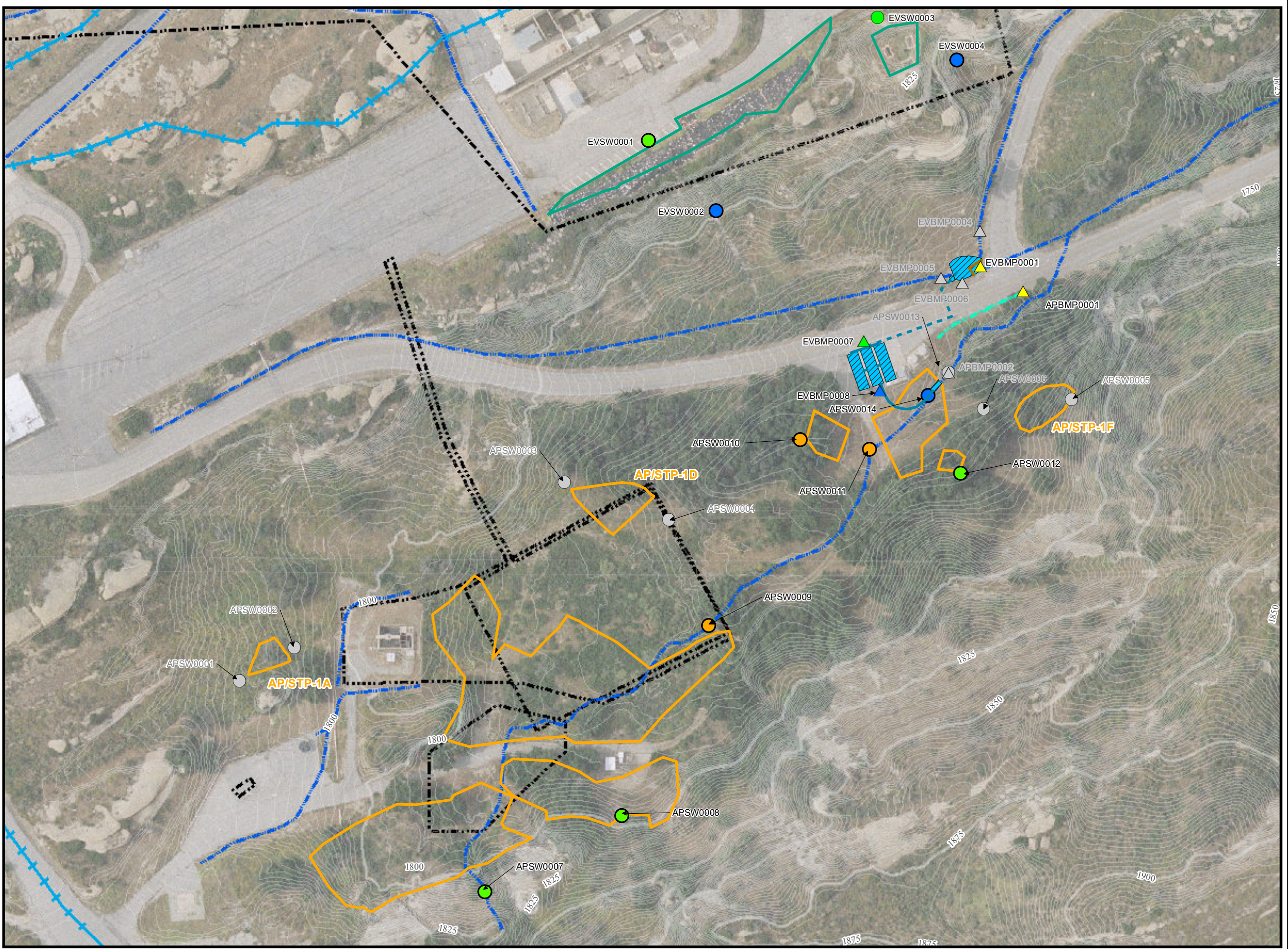
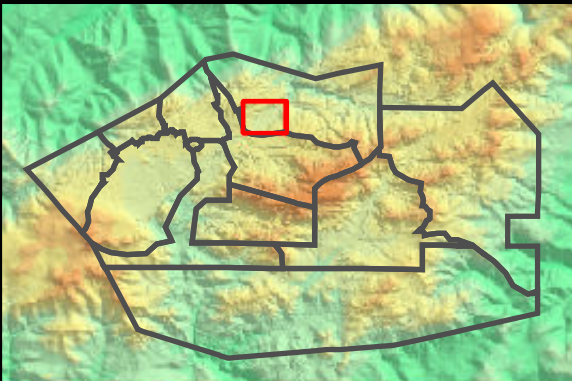
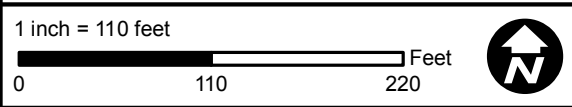
- Base Map Legend**
- Administrative Area Boundary
 - RF1 Site Boundary
 - Drainage
 - Non Jurisdictional Surface Water Pathway
 - Surface Water Divide

- Figure Legend**
- Primary Downstream Performance Monitoring Location
 - Upstream Performance Monitoring Location
 - Secondary Performance Monitoring Location
 - Discontinued Performance Monitoring Location
 - Potential BMP Subarea Monitoring Location
 - Downstream Treatment BMP Monitoring Location
 - Upstream Treatment BMP Monitoring Location
 - Intermediate Treatment BMP Monitoring Location
 - Discontinued Potential BMP Subarea Monitoring Location
 - Actual ISRA Excavation Boundary
 - ISRA Areas with Remediation/Restoration in Progress
 - Engineered Treatment System
 - Engineered Treatment System-Headwall
 - Engineered Treatment System-Pipeline (Aboveground)
 - Engineered Treatment System-Pipeline (Belowground)

Note:

1. Aerial imagery from 2010 Sage Consulting.
2. Topographic contours from 2010 Sage Consulting.
3. Rationale for discontinuing monitoring at previous sample locations can be found in the text and/or tables of the 2010/2011, 2011/2012, 2012/2013, and 2013/2014 Rainy Season Sampling and Analysis Plan.
4. Inspection/sampling at offsite monitoring locations subject to property owner approval.

Path: T:\projects\rock3\ISRA\Figures\PerfMon\2012-2013 Rainy Season\APSTP_Fig7.mxd Date: 10/25/2013



SANTA SUSANA FIELD LABORATORY

FIGURE 7