

BMP Installations 2010-2013

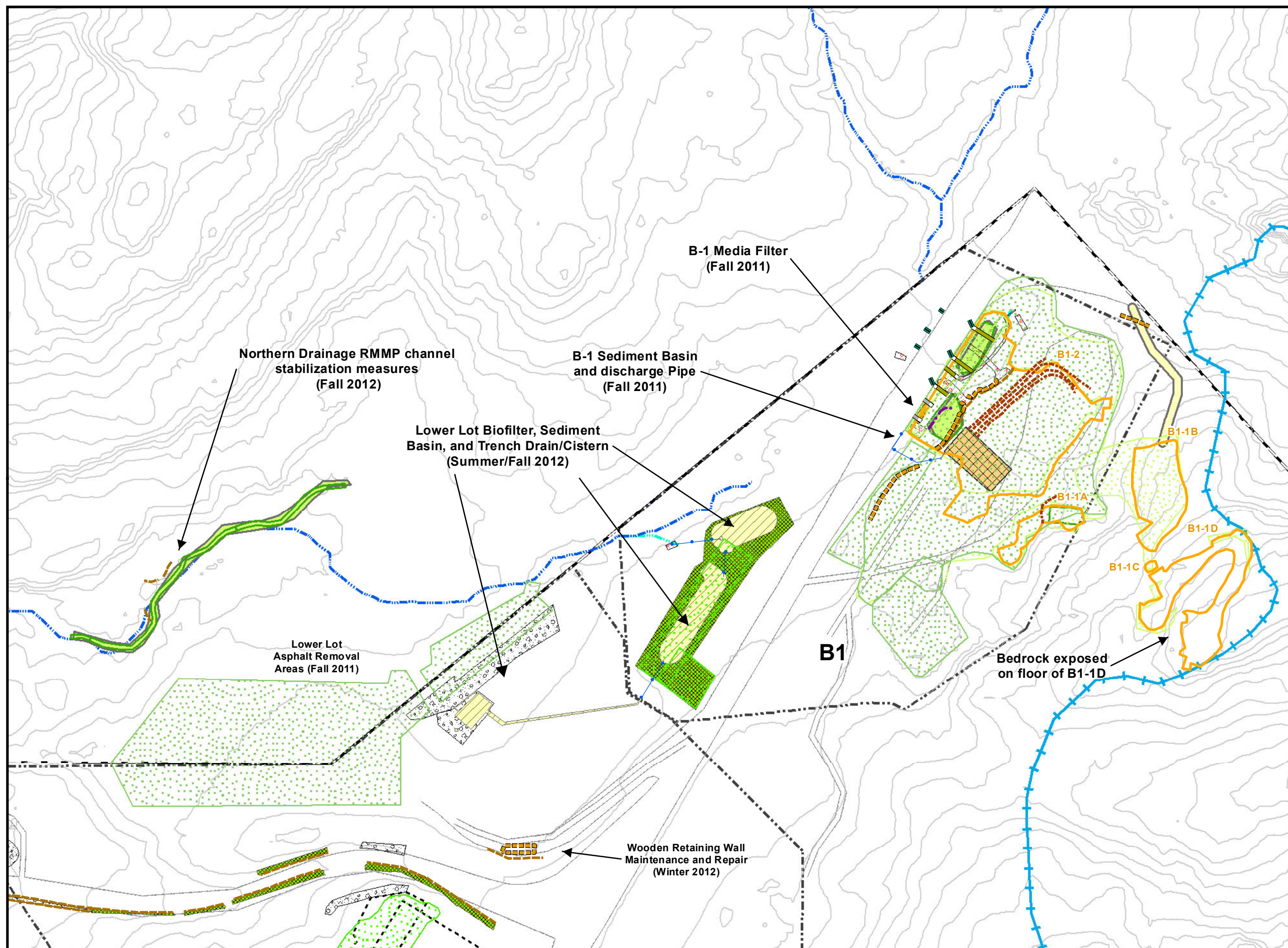
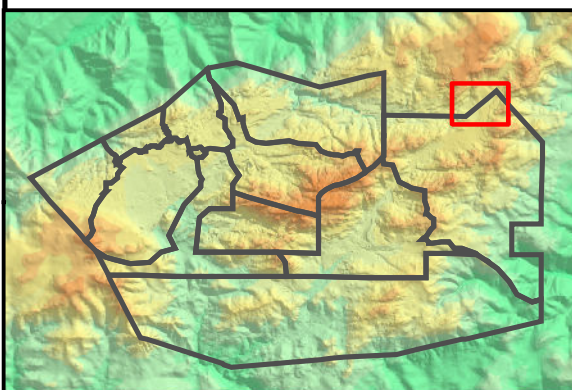
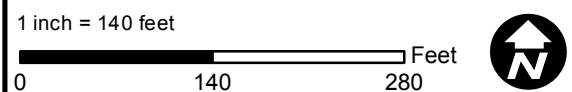
**B-1 Area
Outfall 009 Watershed**

- Base Map Legend**
- Administrative Area Boundary
 - Drainage
 - RFI Site Boundary
 - Surface Water Divide
 - NPDES Outfall
 - Non Jurisdictional Surface Water Pathway
 - A/C Paving
 - Dirt Road
 - Elevation Contour

- Data Legend**
- Actual ISRA Boundary
 - Former Planned ISRA Boundary
 - Abandoned Road
 - Demolition
 - Engineered Natural Treatment System
 - Erosion Control Fabric/Cover
 - Jute Straw Mat
 - Planting Area
 - Road Rehab Restoration
 - Media Filters
 - Retention Sediment Basins
 - Rip Rap
 - Gravel
 - Hydroseed 2012/2013
 - Hydroseed 2011/2012
 - Hydroseed 2010/2011
 - Soil Berm
 - Check Dam
 - Curb Cut
 - Fiber Rolls
 - GabionTube Rip Rap
 - Pipeline
 - Sandbags
 - SiltFencing
 - Wood Retaining Wall

Figure Notes:
1. Topographic contours from 2010 Sage Consultants, Inc.

Path: T:\projects\rock3\ISRA\Figures\PhaseIII_Report\Fig3-4_BMP_B-1.mxd Date: 12/20/2013



BMP Installations 2010-2013
AILF and IEL Areas
Outfall 009 Watershed

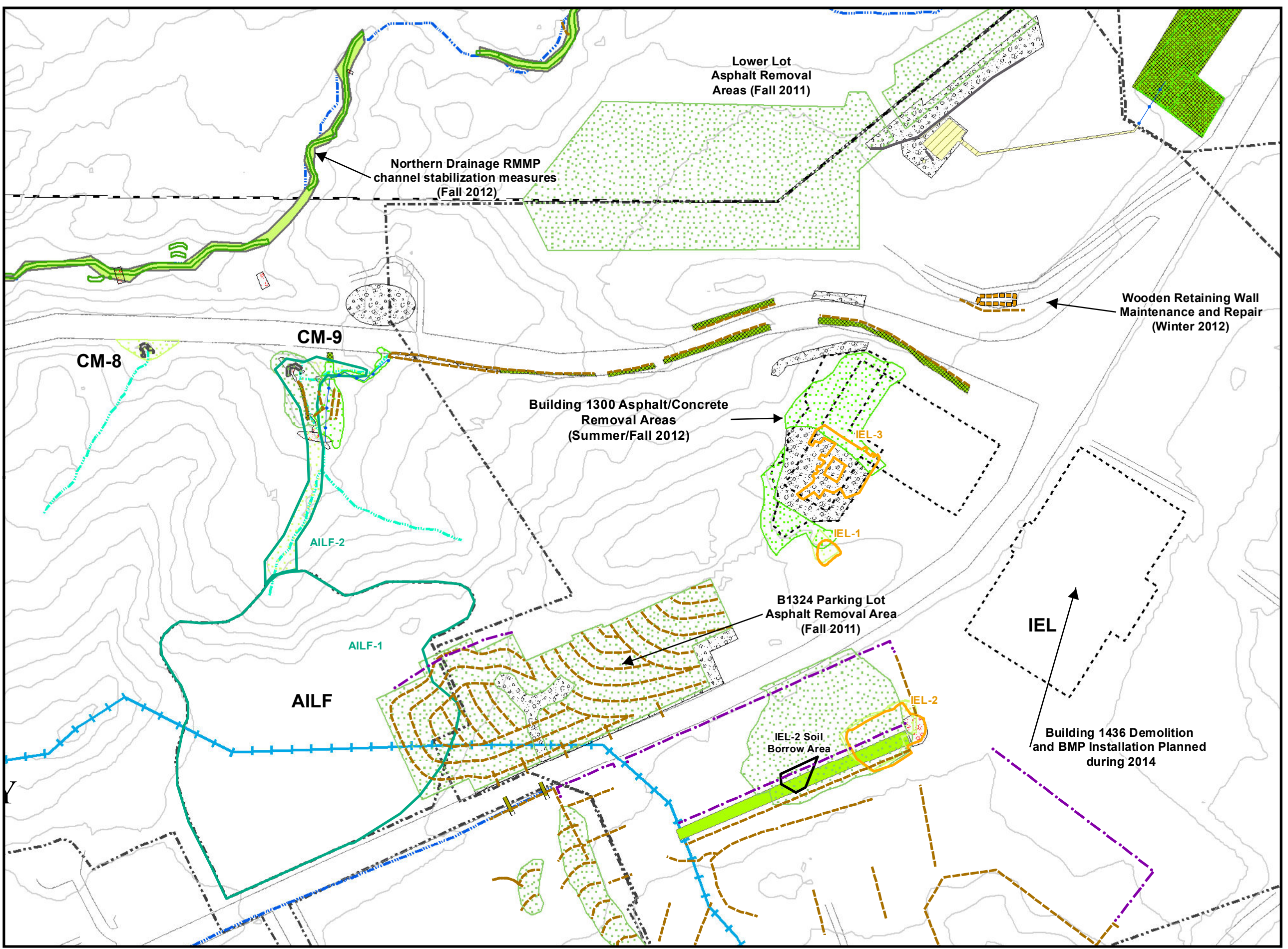
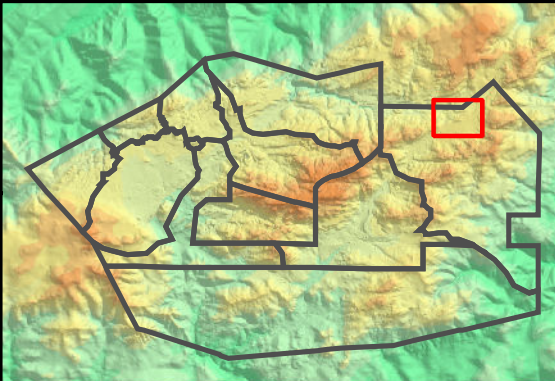
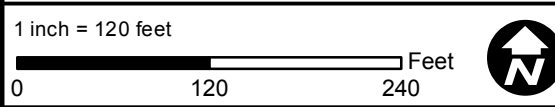
- Base Map Legend**
- Administrative Area Boundary
 - Drainage
 - RFI Site Boundary
 - Surface Water Divide
 - NPDES Outfall
 - Non Jurisdictional Surface Water Pathway
 - A/C Paving
 - Dirt Road
 - Elevation Contour

- Data Legend**
- Actual ISRA Boundary
 - Former Planned ISRA Boundary
 - Soil Borrow Area
 - Engineered Natural Treatment System
 - Demolition
 - Erosion Control Fabric/Cover
 - Jute Straw Mat
 - Planting Area
 - Road Rehab Restoration
 - CM
 - Rip Rap
 - Gravel
 - Hydeseed 2012/2013
 - Hydeseed 2011/2012
 - Hydeseed 2010/2011
 - Check Dam
 - Fiber Rolls
 - Pipeline
 - Sandbags
 - Silt Fencing
 - Concrete Curb
 - Wood Retaining Wall

Figure Notes:

- Topographic contours from 2010 Sage Consultants, Inc.
- Covered the weir boards at CM-1, CM-2, CM-3, CM-4, CM-6, CM-8, CM-9, and CM-10 with filter fabric to facilitate ponding behind the boards and increase flow through filter media beds (Fall 2011).

Path: T:\projects\rock3\ISRA\Figures\PhaseII_Report\Fig-5_BMP_AILF_IEL.mxd
 Date: 12/18/2013



BMP Installations 2010-2013

CTL1 Area

Outfall 009 Watershed

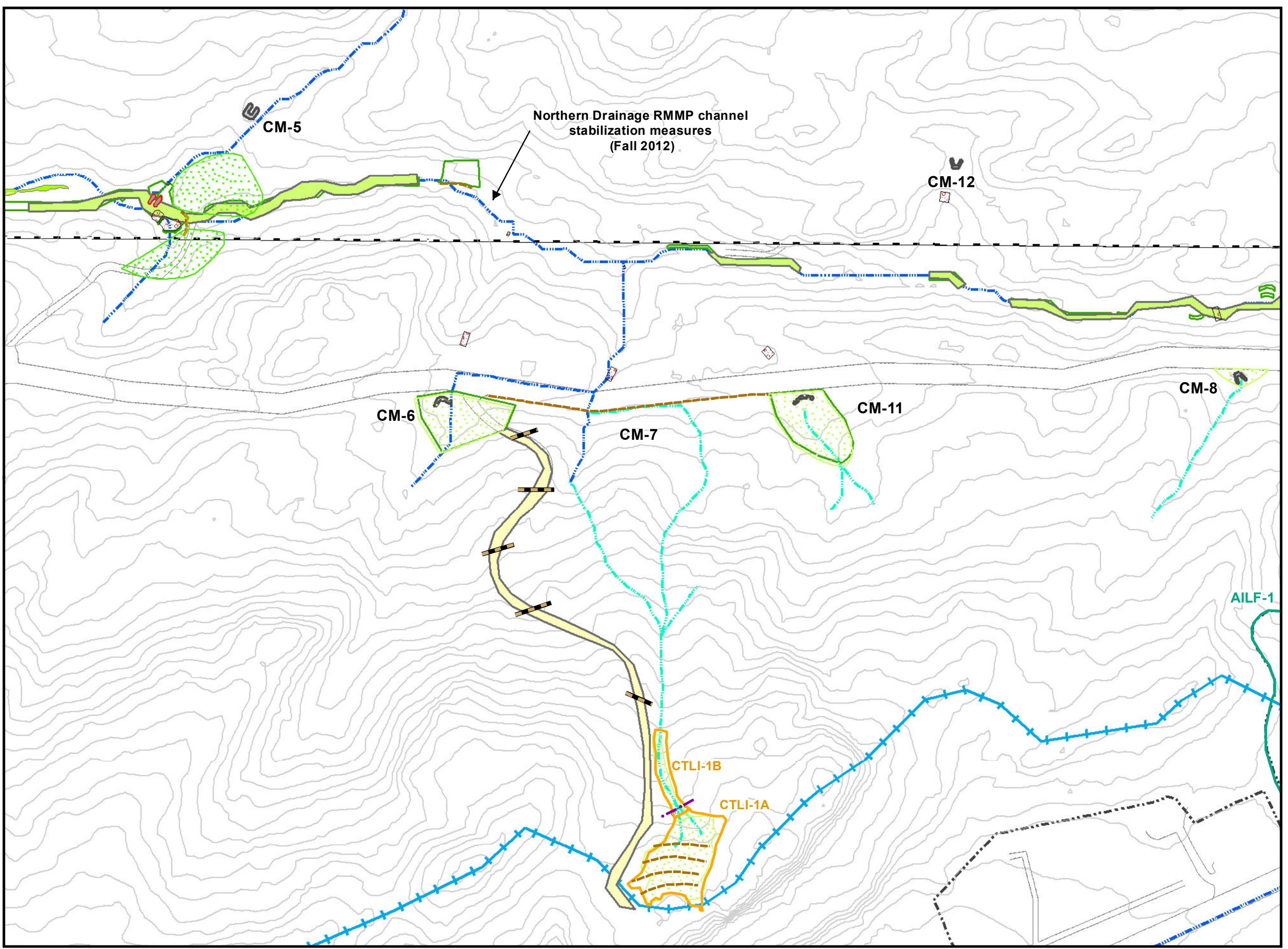
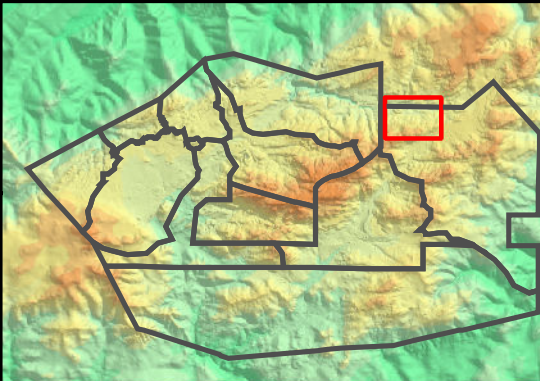
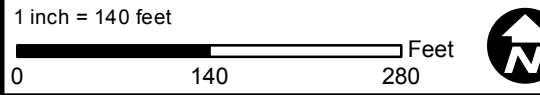
- Base Map Legend**
- Administrative Area Boundary
 - Drainage
 - Surface Water Divide
 - RFI Site Boundary
 - A/C Paving
 - NPDES Outfall
 - Dirt Road
 - Non Jurisdictional Surface Water Pathway
 - Elevation Contour

- Data Legend**
- Actual ISRA Boundary
 - Former Planned ISRA Boundary
 - Abandoned Road
 - Planting Individual
 - Runoff Low Spot
 - Erosion Control Fabric/Cover
 - Planting Area
 - Road Rehab Restoration
 - CM
 - Rip Rap
 - Hydroseed 2012/2013
 - Hydroseed 2010/2011
 - FiberRolls
 - Fiber Schine
 - Silt Fencing
 - Water Gravel Bars

Figure Notes:

1. Topographic contours from 2010 Sage Consultants, Inc.
2. Covered the weir boards at CM-1, CM-2, CM-3, CM-4, CM-6, CM-8, CM-9, and CM-10 with filter fabric to facilitate ponding behind the boards and increase flow through filter media beds (Fall 2011).

Path: T:\projects\vo\ck3\ISRA\Figures\PhaseII_Report\Fig3-6_BMP_CTL1.mxd
Date: 12/18/2013



BMP Installations 2010-2013

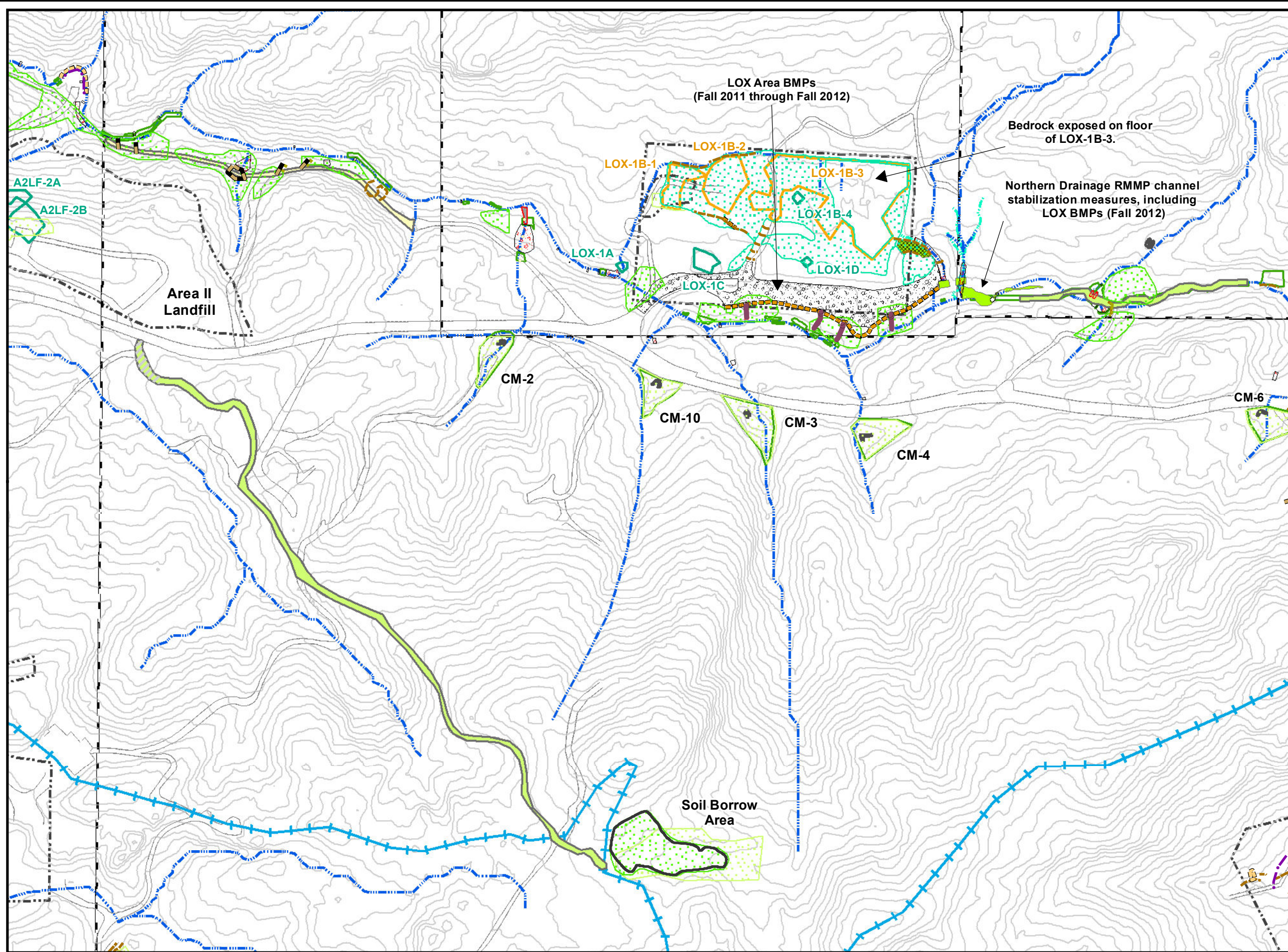
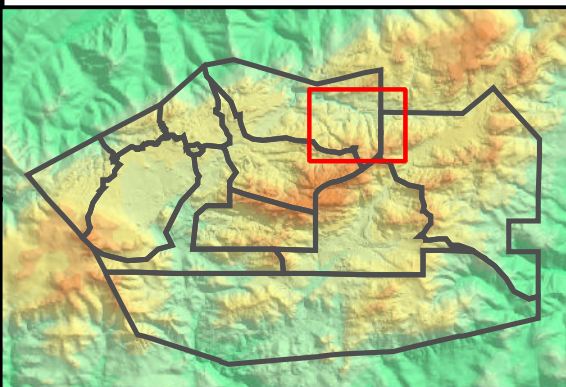
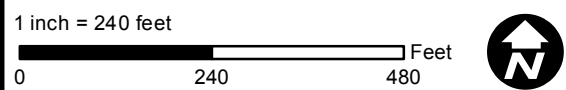
**LOX Area
Outfall 009 Watershed**

- Base Map Legend**
- Administrative Area Boundary
 - Surface Water Divide
 - RFI Site Boundary
 - NPDES Outfall
 - Drainage
 - Non Jurisdictional Surface Water Pathway
 - A/C Paving
 - Dirt Road
 - Elevation Contour

- Data Legend**
- Actual ISRA Boundary
 - Former Planned ISRA Boundary
 - Soil Borrow Area
 - Hydroseed 2013/2014
 - Hydroseed 2012/2013
 - Hydroseed 2010/2011
 - Abandoned Road
 - Geo Cell
 - Planting Individual
 - Road Erosion
 - Runoff Low Spot
 - Gravel
 - Erosion Control Fabric/Cover
 - Jute Straw Mat
 - Planting Area
 - Road Rehab Restoration
 - CM
 - Rip Rap
 - Slope Drain
 - Fiber Schine
 - Fiber Rolls
 - Gabion Tube Rip Rap
 - Gravel Bag Berm
 - Hay Straw Bales
 - Rolling Dips
 - Sandbags
 - Silt Fencing
 - WaterGravelBars
 - CulvertEntranceExit

- Figure Notes:**
1. Topographic contours from 2010 Sage Consultants, Inc.
 2. Covered the weir boards at CM-1, CM-2, CM-3, CM-4, CM-6, CM-8, CM-9, and CM-10 with filter fabric to facilitate ponding behind the boards and increase flow through filter media beds (Fall 2011).

Path: T:\projects\rock3\ISRA\Figures\PhaseIII_Report\Fig3-7_BMP_LOX.mxd Date: 12/26/2013



BMP Installations 2010-2013

A2LF Area

Outfall 009 Watershed

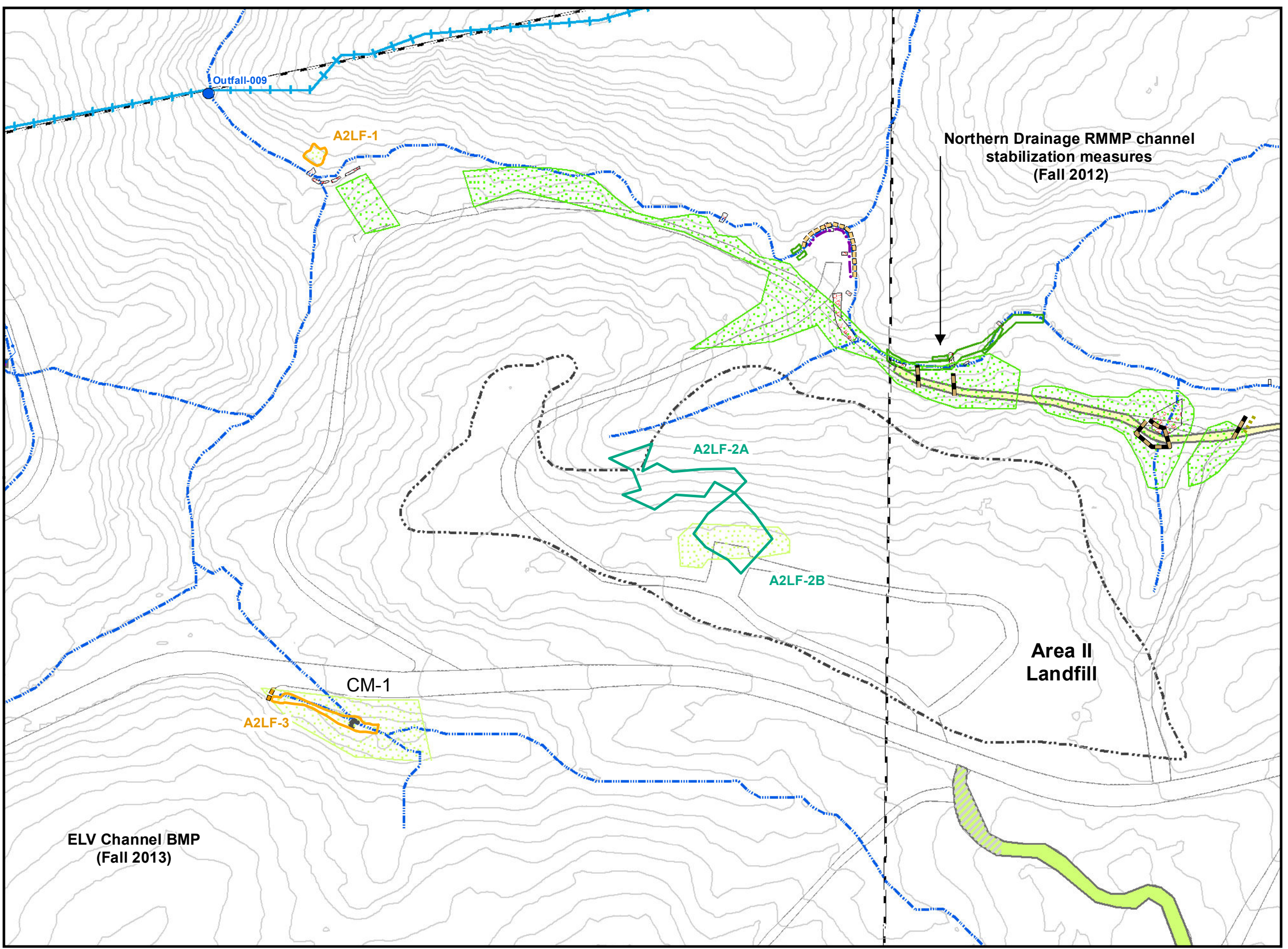
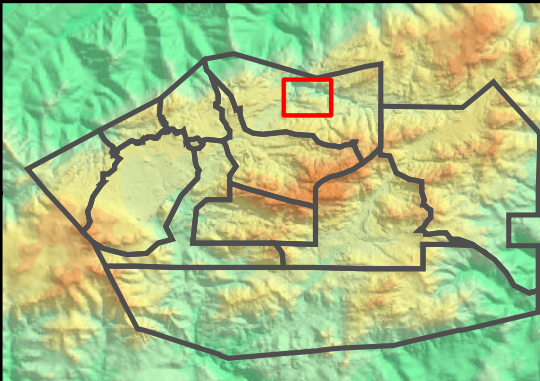
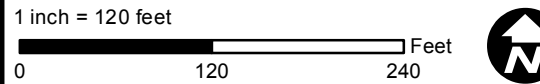
- Base Map Legend**
- Administrative Area Boundary
 - RFI Site Boundary
 - NPDES Outfall
 - Drainage
 - Non Jurisdictional Surface Water Pathway
 - Surface Water Divide
 - A/C Paving
 - Dirt Road
 - Elevation Contour

- Data Legend**
- Actual ISRA Boundary
 - Former Planned ISRA Boundary
 - Hydroseed 2012/2013
 - Hydroseed 2010/2011
 - Abandoned Road
 - Road Erosion
 - Planting Area
 - Road Rehab Restoration
 - CM
 - Rip Rap
 - Pump
 - Hay Straw Bales
 - Pipeline
 - Rolling Dips
 - Sandbags
 - Silt Fencing
 - Water Gravel Bars

Figure Notes:

1. Topographic contours from 2010 Sage Consultants, Inc.
2. Covered the weir boards at CM-1, CM-2, CM-3, CM-4, CM-6, CM-8, CM-9, and CM-10 with filter fabric to facilitate ponding behind the boards and increase flow through filter media beds (Fall 2011).

Path: T:\projects\rock3\ISRA\Figures\PhaseIII_Report\Fig3-8_BMP_A2LF.mxd Date: 12/26/2013



**BMP Installations 2010-2013
AP/STP and ELV Areas
Outfall 009 Watershed**

- Base Map Legend**
- Administrative Area Boundary
 - Surface Water Divide
 - RFI Site Boundary
 - NPDES Outfall
 - Drainage
 - Non Jurisdictional Surface Water Pathway
 - A/C Paving
 - Dirt Road
 - Elevation Contour

- Data Legend**
- Actual ISRA Boundary
 - Former Planned ISRA Boundary
 - Hydroseed, 2013/2014
 - Hydroseed 2012/2013
 - Hydroseed 2011/2012
 - Hydroseed 2010/2011
 - Rip Rap
 - Retention Sediment Basins
 - CM
 - Jute Straw Mat
 - Abandoned Road
 - Gravel
 - BMP Tank
 - Wet Well Pump
 - Pump
 - Storage Tank
 - Fiber Rolls
 - Gravel Bag Berm
 - Pipeline
 - Sandbags
 - Silt Fencing
 - Concrete Curb
 - Berm Drains
 - Percolation Hole

Figure Notes:

- Topographic contours from 2010 Sage Consultants, Inc
- Covered the weir boards at CM-1, CM-2, CM-3, CM-4, CM-6, CM-8, CM-9, and CM-10 with filter fabric to facilitate ponding behind the boards and increase flow through filter media beds (Fall 2011).

Path: T:\projects\rock3\ISRA\Figures\PhaseII_Report\Fig3-9_BMP_APSTP.mxd
Date: 12/18/2013

