

PLANT LEGEND - MITIGATION PLANTING

Area Name	Estimated Area (sf)	Species	Quantity
ND - PLANT1-15A	3,069	<i>Baccharis salicifolia</i>	6
		<i>Juglans californica</i>	1
		<i>Salix laevigata</i>	1
		<i>Quercus agrifolia</i>	3
ND - PLANT1-15B	626	<i>Baccharis salicifolia</i>	1
		<i>Juglans californica</i>	0
		<i>Salix laevigata</i>	0
		<i>Quercus agrifolia</i>	1
ND - PLANT1-15C	580	<i>Baccharis salicifolia</i>	1
		<i>Juglans californica</i>	0
		<i>Salix laevigata</i>	0
		<i>Quercus agrifolia</i>	1
ND - PLANT16-19A	4,823	<i>Baccharis salicifolia</i>	10
		<i>Juglans californica</i>	2
		<i>Salix laevigata</i>	2
		<i>Quercus agrifolia</i>	4
ND - PLANT16-19B	3,823	<i>Baccharis salicifolia</i>	8
		<i>Juglans californica</i>	2
		<i>Salix laevigata</i>	2
		<i>Quercus agrifolia</i>	3
ND - PLANT23	1,502	<i>Baccharis salicifolia</i>	3
		<i>Juglans californica</i>	1
		<i>Salix laevigata</i>	1
		<i>Quercus agrifolia</i>	1
ND - PLANT24	2,353	<i>Baccharis salicifolia</i>	5
		<i>Juglans californica</i>	1
		<i>Salix laevigata</i>	1
		<i>Quercus agrifolia</i>	2
ND - PLANT25-32A	1,398	<i>Baccharis salicifolia</i>	3
		<i>Juglans californica</i>	1
		<i>Salix laevigata</i>	1
		<i>Quercus agrifolia</i>	1
ND - PLANT25-32B	962	<i>Baccharis salicifolia</i>	2
		<i>Juglans californica</i>	1
		<i>Salix laevigata</i>	1
		<i>Quercus agrifolia</i>	1
ND - PLANT25-32C	3,098	<i>Baccharis salicifolia</i>	6
		<i>Juglans californica</i>	1
		<i>Salix laevigata</i>	1
		<i>Quercus agrifolia</i>	3
ND TOTAL	22,234	<i>Baccharis salicifolia</i>	45
		<i>Juglans californica</i>	10
		<i>Salix laevigata</i>	10
		<i>Quercus agrifolia</i>	20
TOTAL PLANTS			85

PLANT LEGEND - RESTORATION PLANTING

Station	Estimated Planting Area (sf)	Estimated Quantity
15+15	23	3
15+56	45	6
21+12	12	3
21+49	113	15
22+26	180	24
23+40	27	6
23+70	28	6
23+70 (ECB)	142	18
24+71	29	6
25+35, 25+63	36	6
26+23	47	6
26+57	4	3
26+57,27+35	131	18
32+41	11	3
35+45	4	3
35+45 (ECB)	128	18
37+51	212	27
38+89	81	12
40+60	75	9
43+65	19	3
44+40	477	60
45+07	122	15
45+94	2	3
46+56	486	60
49+04	12	3
49+97	27	6
51+28	22	3
53+87	4	3
54+09	75	9
55+51	169	21
56+62	117	15
59+71	47	6
60+94	45	6
70+48	47	6
73+85	4	3
77+25	4	3
TOTAL		417

Restoration Planting Notes:

- 1) Restoration Planting may include live cuttings or containerized plants of the following species: *Artemisia douglasiana* (Mugwort), *Baccharis pilularis* (Coyote Bush), *Baccharis salicifolia* (Mulefat), *Salix laevigata* (Red Willow), *Salix lasiolepis* (Arroyo Willow), and *Sambucus mexicana* (Elderberry).
- 2) Planting Areas are estimated to be 25% of each stabilization site.
- 3) Estimated Quantities are based upon planting (3) stakes / cuttings per hole at 5' on center.
- 4) Final quantities are subject to change during design development.



ENVIRONMENTAL CONSULTANTS

2169-G East Francisco Blvd.
San Rafael, CA 94901
(415) 454-8868 Phone
(415) 454-0129 Fax

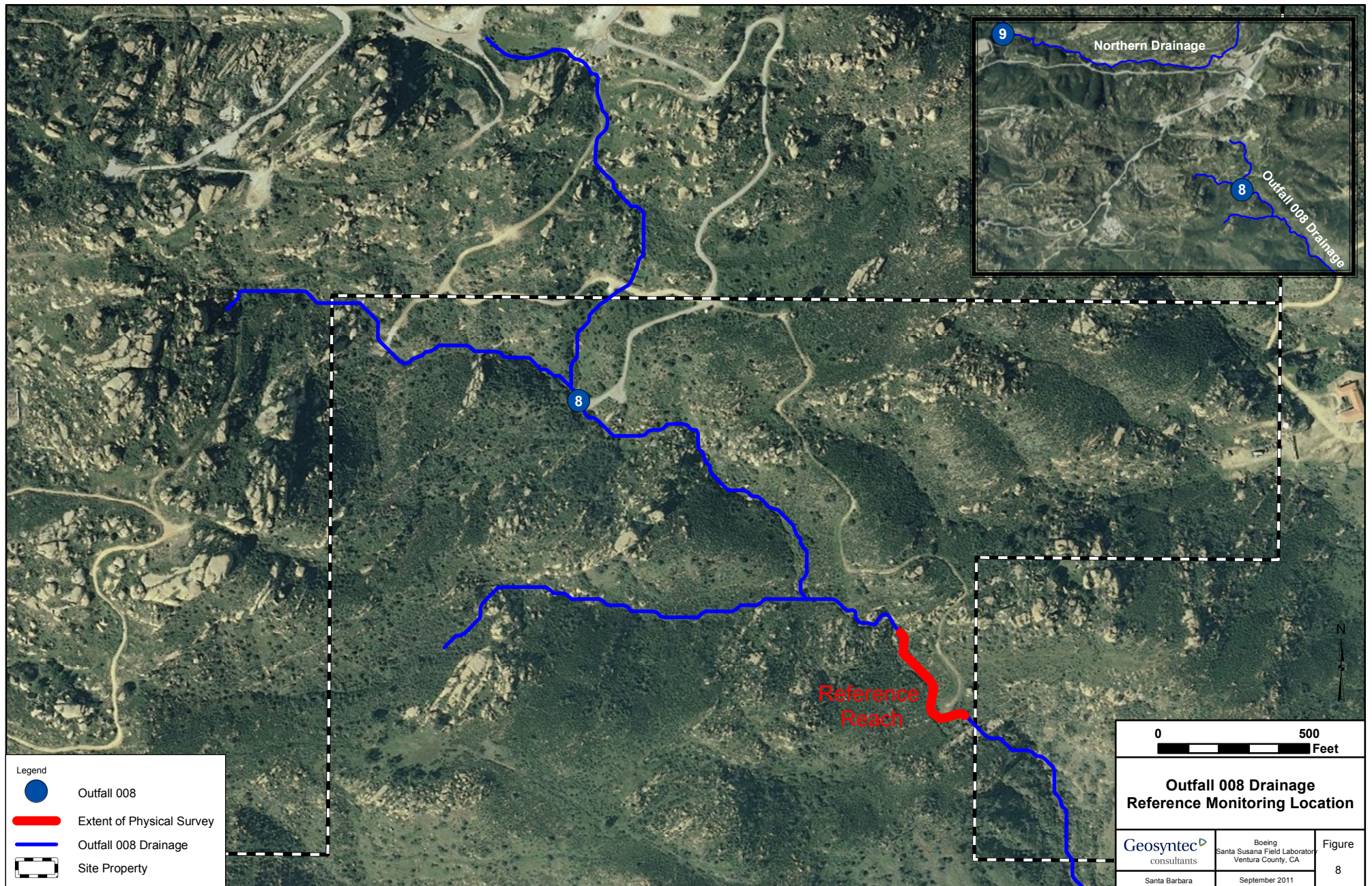
Boeing SSFL

60% DRAWINGS: NOT FOR CONSTRUCTION

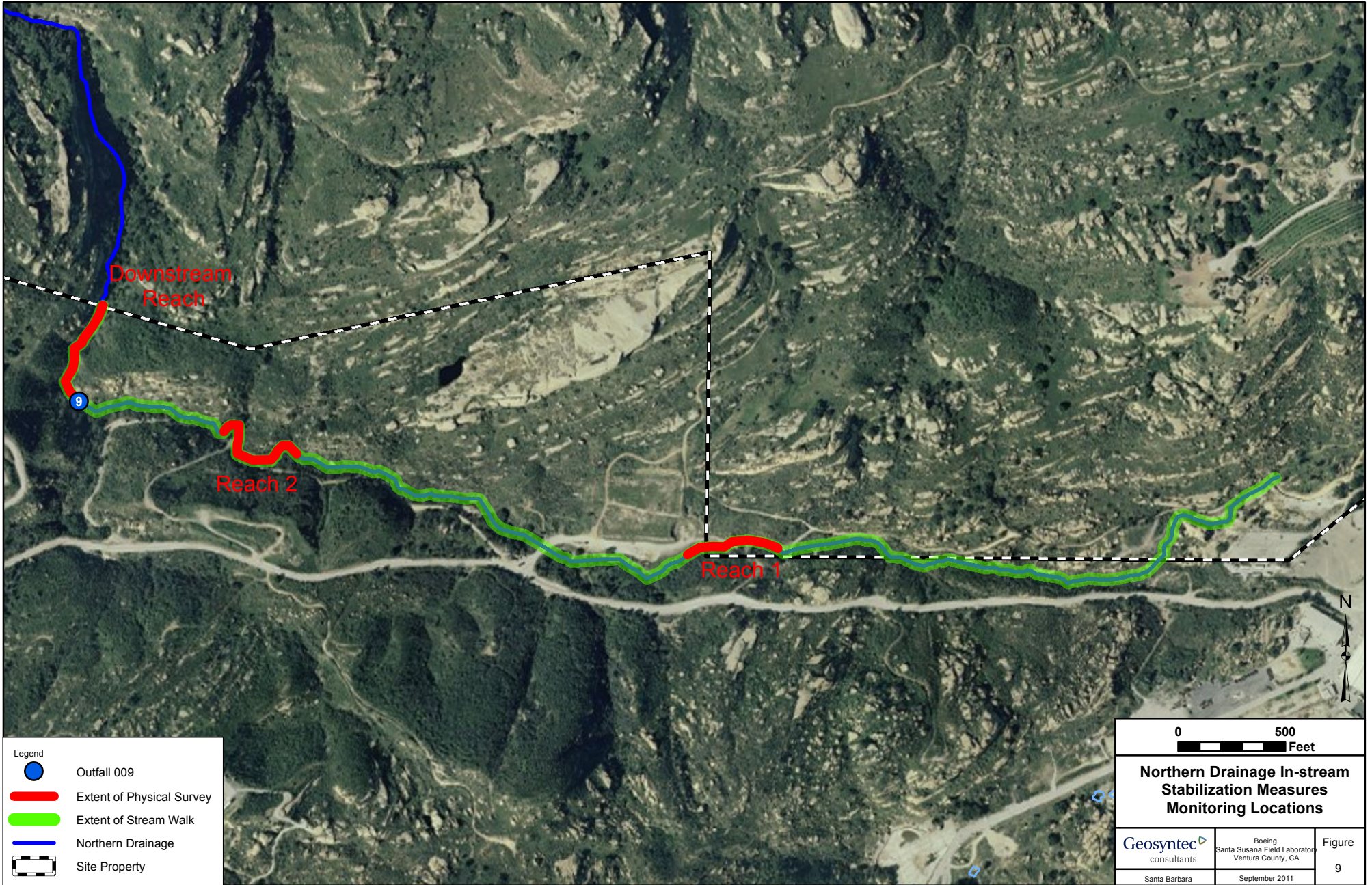
NORTHERN DRAINAGE RESTORATION PLANTING

Figure 7

Plant Legends



Note: Physical survey to consist of surveying established cross-sections and longitudinal thalweg profiles, facies mapping, and a photographic survey to be performed annually during the dry season. The purpose of the reference reach is to allow comparison to assess whether in-stream geomorphic changes are likely associated with management actions in the Northern Drainage or natural processes.



Note: Physical survey to consist of surveying established cross-sections and longitudinal thalweg profiles, facies mapping, and a photographic survey to be performed annually during the dry season. Stream walk to consist of a visual survey of the study reach, conducted annually by a qualified engineer or scientist, to identify geomorphic changes in locations that are not otherwise monitored.

APPENDIX A

As-Built Northern Drainage Containerized Planting Areas, Including Sage Ranch

NORTHERN DRAINAGE PLANT LEGEND

Area Name	Estimated Area (sf)	Species	Quantity	Irrigation
ND - PLANT1	340	<i>Baccharis pilularis</i>	0	Hard pipe from fire line
		<i>Baccharis salicifolia</i>	17	Drip
		<i>Sambucus mexicana</i>	4	
		<i>Artemisia douglasiana</i>	0	
		<i>Leymus triticoides</i>	0	
ND - PLANT2	382	<i>Baccharis pilularis</i>	0	Hard pipe from fire line
		<i>Baccharis salicifolia</i>	19	Drip
		<i>Sambucus mexicana</i>	5	
		<i>Artemisia douglasiana</i>	0	
		<i>Leymus triticoides</i>	0	
ND - PLANT3	393	<i>Baccharis pilularis</i>	0	Hard pipe from fire line
		<i>Baccharis salicifolia</i>	20	Drip
		<i>Sambucus mexicana</i>	5	
		<i>Artemisia douglasiana</i>	0	
		<i>Leymus triticoides</i>	0	
ND - PLANT4	426	<i>Baccharis pilularis</i>	0	Hard pipe from fire line
		<i>Baccharis salicifolia</i>	21	Drip
		<i>Sambucus mexicana</i>	6	
		<i>Artemisia douglasiana</i>	0	
		<i>Leymus triticoides</i>	0	
ND - PLANT5	425	<i>Baccharis pilularis</i>	0	Hard pipe from fire line
		<i>Baccharis salicifolia</i>	21	Drip
		<i>Sambucus mexicana</i>	6	
		<i>Artemisia douglasiana</i>	0	
		<i>Leymus triticoides</i>	0	
ND - PLANT6	925	<i>Baccharis pilularis</i>	0	Hard pipe from fire line
		<i>Baccharis salicifolia</i>	50	Drip
		<i>Sambucus mexicana</i>	8	
		<i>Artemisia douglasiana</i>	2	
		<i>Leymus triticoides</i>	0	
ND - PLANT7	1034	<i>Baccharis pilularis</i>	0	Hard pipe from fire line
		<i>Baccharis salicifolia</i>	81	Drip
		<i>Sambucus mexicana</i>	8	
		<i>Artemisia douglasiana</i>	2	
		<i>Leymus triticoides</i>	0	
ND - PLANT8	258	<i>Baccharis pilularis</i>	0	Hard pipe from fire line
		<i>Baccharis salicifolia</i>	13	Drip
		<i>Sambucus mexicana</i>	3	
		<i>Artemisia douglasiana</i>	0	
		<i>Leymus triticoides</i>	0	
ND - PLANT9	101	<i>Baccharis pilularis</i>	0	Hard pipe from fire line
		<i>Baccharis salicifolia</i>	5	Drip
		<i>Sambucus mexicana</i>	1	
		<i>Artemisia douglasiana</i>	0	
		<i>Leymus triticoides</i>	0	
ND - PLANT10	600	<i>Baccharis pilularis</i>	0	Hard pipe from fire line
		<i>Baccharis salicifolia</i>	32	Drip
		<i>Sambucus mexicana</i>	6	
		<i>Artemisia douglasiana</i>	0	
		<i>Leymus triticoides</i>	0	

NORTHERN DRAINAGE PLANT LEGEND (continued)

Area Name	Estimated Area (sf)	Species	Quantity	Irrigation
ND - PLANT11	801	<i>Baccharis pilularis</i>	0	Hard pipe from fire line
		<i>Baccharis salicifolia</i>	42	Drip
		<i>Sambucus mexicana</i>	8	
		<i>Artemisia douglasiana</i>	2	
		<i>Leymus triticoides</i>	0	
ND - PLANT12	236	<i>Baccharis pilularis</i>	0	Hard pipe from fire line
		<i>Baccharis salicifolia</i>	14	Drip
		<i>Sambucus mexicana</i>	1	
		<i>Artemisia douglasiana</i>	0	
		<i>Leymus triticoides</i>	0	
ND - PLANT13	511	<i>Baccharis pilularis</i>	0	Hard pipe from fire line
		<i>Baccharis salicifolia</i>	26	Drip
		<i>Sambucus mexicana</i>	6	
		<i>Artemisia douglasiana</i>	0	
		<i>Leymus triticoides</i>	0	
ND - PLANT14-1	298	<i>Baccharis pilularis</i>	0	Hard pipe from fire line
		<i>Baccharis salicifolia</i>	16	Drip
		<i>Sambucus mexicana</i>	2	
		<i>Artemisia douglasiana</i>	0	
		<i>Leymus triticoides</i>	0	
ND - PLANT14-1	298	<i>Baccharis pilularis</i>	0	Hard pipe from fire line
		<i>Baccharis salicifolia</i>	5	Drip
		<i>Sambucus mexicana</i>	1	
		<i>Artemisia douglasiana</i>	0	
		<i>Leymus triticoides</i>	0	
ND - PLANT15	209	<i>Baccharis pilularis</i>	0	Hard pipe from fire line
		<i>Baccharis salicifolia</i>	9	Drip
		<i>Sambucus mexicana</i>	1	
		<i>Artemisia douglasiana</i>	0	
		<i>Leymus triticoides</i>	0	
ND - PLANT16	2403	<i>Baccharis pilularis</i>	0	Hard pipe from fire line
		<i>Baccharis salicifolia</i>	98	Drip
		<i>Sambucus mexicana</i>	15	
		<i>Artemisia douglasiana</i>	5	
		<i>Leymus triticoides</i>	0	
ND - PLANT17	1530	<i>Baccharis pilularis</i>	0	Hard pipe from fire line
		<i>Baccharis salicifolia</i>	85	Drip
		<i>Sambucus mexicana</i>	11	
		<i>Artemisia douglasiana</i>	0	
		<i>Leymus triticoides</i>	0	
ND - PLANT18	2081	<i>Baccharis pilularis</i>	124	Hard pipe from fire line
		<i>Baccharis salicifolia</i>	12	Drip
		<i>Sambucus mexicana</i>	1	
		<i>Artemisia douglasiana</i>	0	
		<i>Leymus triticoides</i>	0	
ND - PLANT19	1532	<i>Baccharis pilularis</i>	0	Hard pipe from fire line
		<i>Baccharis salicifolia</i>	83	Drip
		<i>Sambucus mexicana</i>	13	
		<i>Artemisia douglasiana</i>	0	
		<i>Leymus triticoides</i>	0	
ND - PLANT23	2801	<i>Baccharis pilularis</i>	0	Hard pipe from fire line
		<i>Baccharis salicifolia</i>	26	Drip
		<i>Sambucus mexicana</i>	24	
		<i>Artemisia douglasiana</i>	0	
		<i>Leymus triticoides</i>	0	



ENVIRONMENTAL CONSULTANTS
 2169-G East Francisco Blvd.
 San Rafael, CA 94901
 (415) 454-8868 Phone
 (415) 454-0129 Fax

Boeing SSFL

AS-BUILT

Figure 1A

Northern Drainage
 Plant Legends

NORTHERN DRAINAGE PLANT LEGEND (continued)

Area Name	Estimated Area (sf)	Species	Quantity	Irrigation
ND - PLANT24	2197	<i>Baccharis pilularis</i>	0	Hard pipe from fire line
		<i>Baccharis salicifolia</i>	35	Drip
		<i>Sambucus mexicana</i>	83	
		<i>Artemisia douglasiana</i>	0	
		<i>Leymus triticoides</i>	0	
ND - PLANT25	143	<i>Baccharis pilularis</i>	0	Hard pipe from fire line
		<i>Baccharis salicifolia</i>	9	Drip
		<i>Sambucus mexicana</i>	0	
		<i>Artemisia douglasiana</i>	0	
		<i>Leymus triticoides</i>	0	
ND - PLANT26	380	<i>Baccharis pilularis</i>	0	Hard pipe from fire line
		<i>Baccharis salicifolia</i>	25	Drip
		<i>Sambucus mexicana</i>	1	
		<i>Artemisia douglasiana</i>	0	
		<i>Leymus triticoides</i>	0	
ND - PLANT27	395	<i>Baccharis pilularis</i>	0	Hard pipe from fire line
		<i>Baccharis salicifolia</i>	26	Drip
		<i>Sambucus mexicana</i>	1	
		<i>Artemisia douglasiana</i>	0	
		<i>Leymus triticoides</i>	0	
ND - PLANT28	161	<i>Baccharis pilularis</i>	0	Hard pipe from fire line
		<i>Baccharis salicifolia</i>	11	Drip
		<i>Sambucus mexicana</i>	0	
		<i>Artemisia douglasiana</i>	0	
		<i>Leymus triticoides</i>	0	
ND - PLANT29	362	<i>Baccharis pilularis</i>	0	Hard pipe from fire line
		<i>Baccharis salicifolia</i>	24	Drip
		<i>Sambucus mexicana</i>	1	
		<i>Artemisia douglasiana</i>	0	
		<i>Leymus triticoides</i>	0	
ND - PLANT30	4132	<i>Baccharis pilularis</i>	86	Hard pipe from fire line
		<i>Baccharis salicifolia</i>	221	Drip
		<i>Sambucus mexicana</i>	72	
		<i>Artemisia douglasiana</i>	0	
		<i>Leymus triticoides</i>	30	
ND - PLANT31	462	<i>Baccharis pilularis</i>	0	Hard pipe from fire line
		<i>Baccharis salicifolia</i>	30	Drip
		<i>Sambucus mexicana</i>	1	
		<i>Artemisia douglasiana</i>	0	
		<i>Leymus triticoides</i>	0	
ND - PLANT32	2765	<i>Baccharis pilularis</i>	0	Hard pipe from fire line
		<i>Baccharis salicifolia</i>	182	Drip
		<i>Sambucus mexicana</i>	0	
		<i>Artemisia douglasiana</i>	0	
		<i>Leymus triticoides</i>	0	
ND TOTAL	8800	<i>Baccharis pilularis</i>	210	
		<i>Baccharis salicifolia</i>	1253	
		<i>Sambucus mexicana</i>	293	
		<i>Artemisia douglasiana</i>	11	
		<i>Leymus triticoides</i>	30	
TOTAL PLANTS			1797	



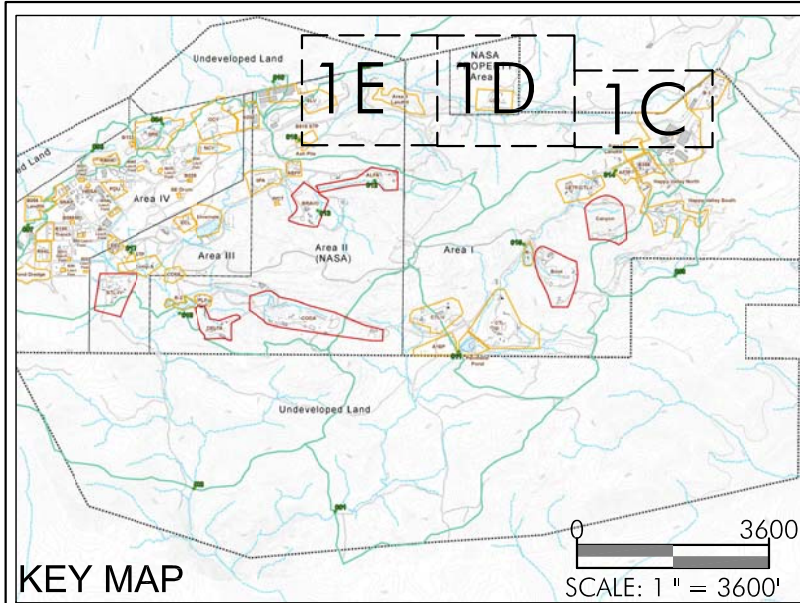
ENVIRONMENTAL CONSULTANTS
 2169-G East Francisco Blvd.
 San Rafael, CA 94901
 (415) 454-8868 Phone
 (415) 454-0129 Fax

Boeing SSFL

AS BUILT

Figure 1B

**Northern Drainage
 Plant Legends**



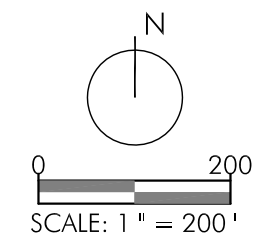
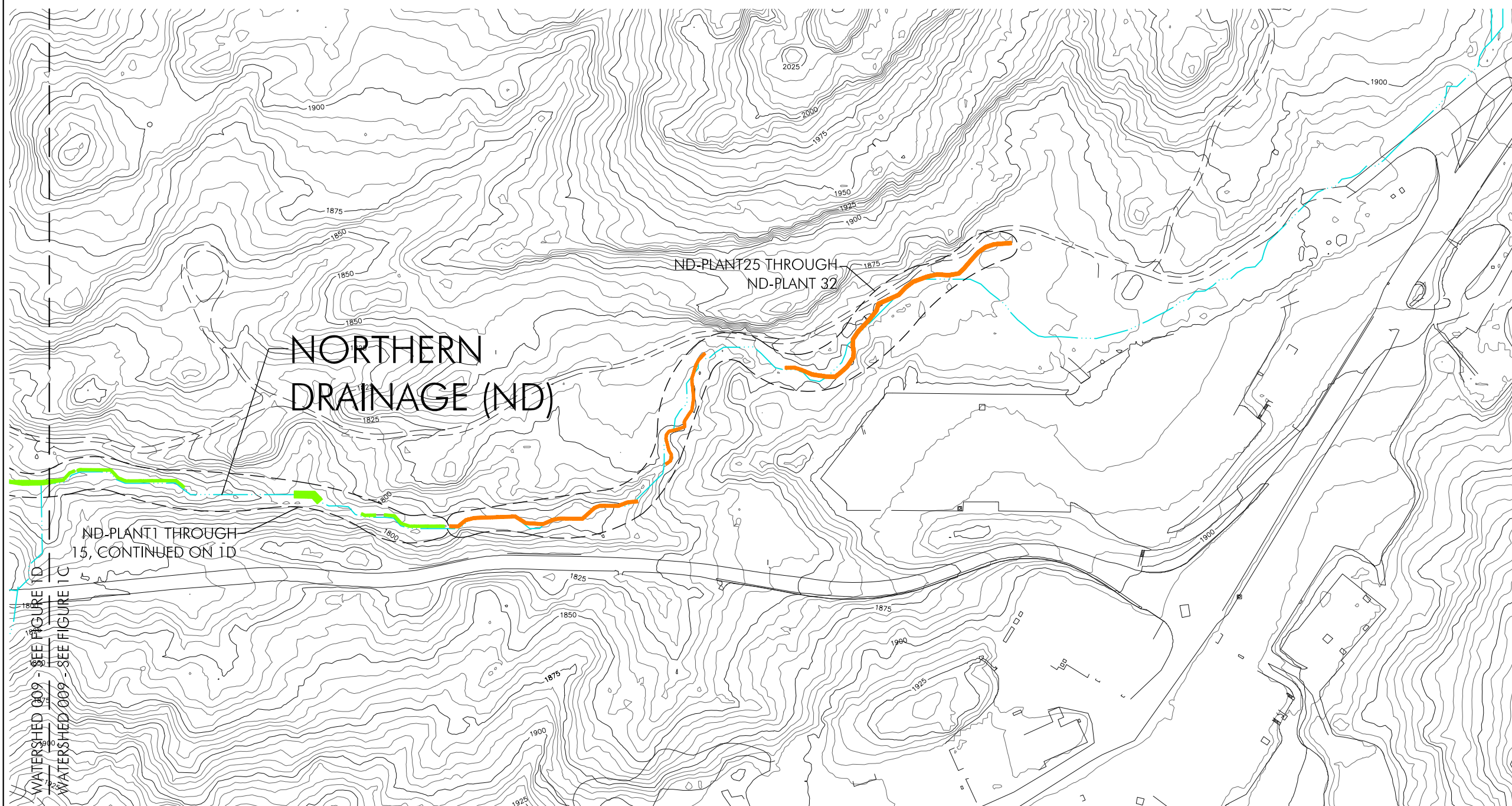
ENVIRONMENTAL CONSULTANTS
 2169-G East Francisco Blvd.
 San Rafael, CA 94901
 (415) 454-8868 Phone
 (415) 454-0129 Fax

Boeing SSFL

AS BUILT

Figure 1C

**Northern Drainage
 Containerized
 Planting Areas,
 Including Sage
 Ranch**



LEGEND

- PLANTING AREA
- SAGE RANCH PLANTING AREA
- WATERSHED
- RFI BOUNDARY
- STREAMS

Date: June 2011
 Map By: MWS, MCB
 Filepath: L:\Acad 2000 Files\17000\17166\dwg\Containerized Planting-
 As-Built\Containerized Planting Areas-Northern Drainage As-Built.dwg



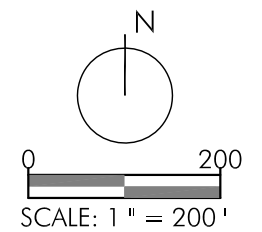
ENVIRONMENTAL CONSULTANTS
 2169-G East Francisco Blvd.
 San Rafael, CA 94901
 (415) 454-8868 Phone
 (415) 454-0129 Fax

Boeing SSFL

AS BUILT

Figure 1D

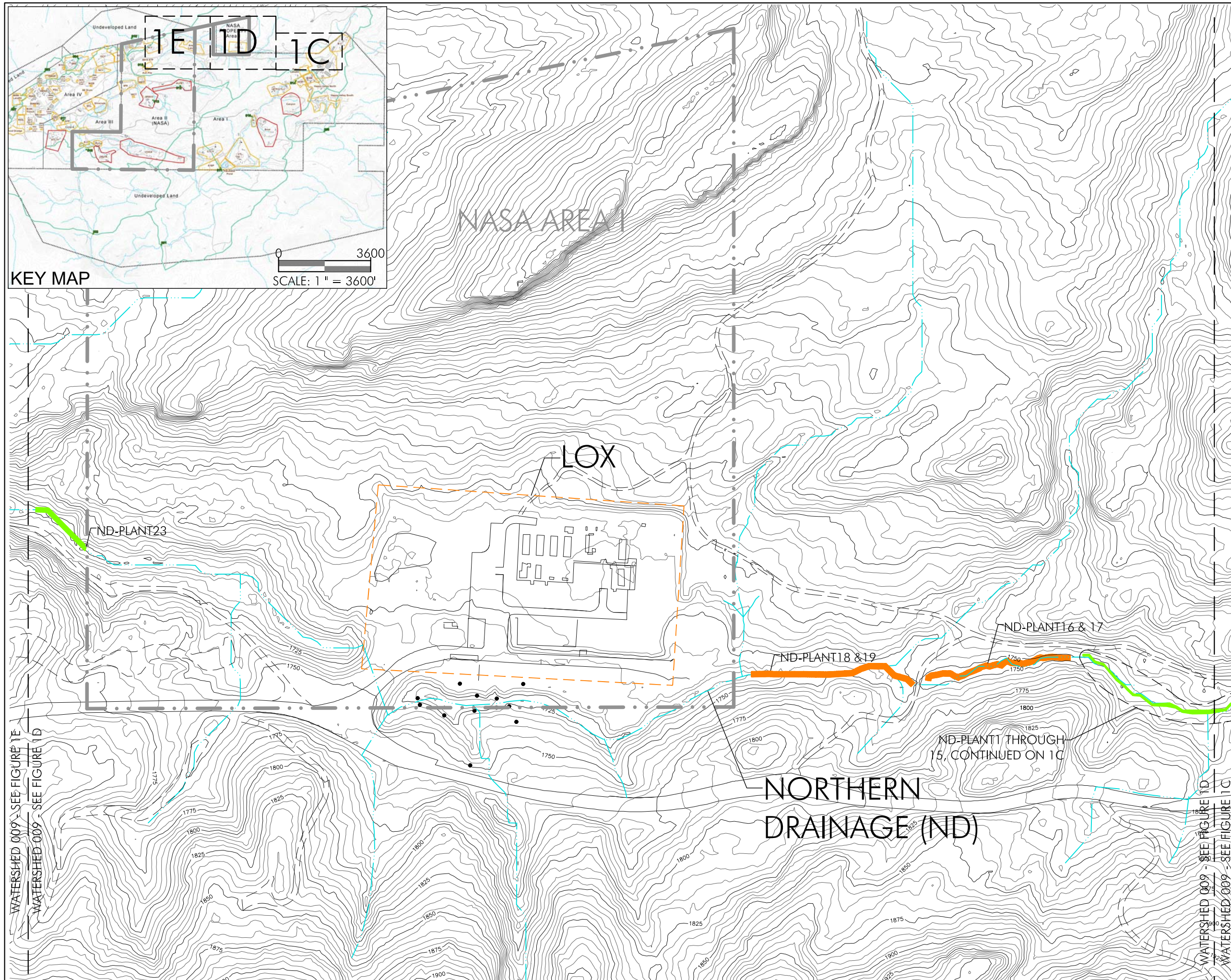
Northern Drainage
 Containerized
 Planting Areas,
 Including Sage
 Ranch



LEGEND

- PLANTING AREA
- SAGE RANCH PLANTING AREA
- WATERSHED
- RFI BOUNDARY
- STREAMS

Date: June 2011
 Map By: MWS, MCB
 Filepath: L:\Acad 2000 Files\17000\17166\dwg\Containerized Planting-
 As-Built\Containerized Planting Areas- Northern Drainage As-Built.dwg





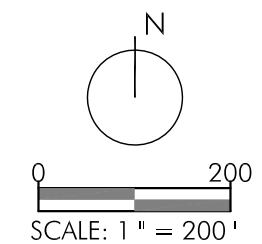
ENVIRONMENTAL CONSULTANTS
 2169-G East Francisco Blvd.
 San Rafael, CA 94901
 (415) 454-8868 Phone
 (415) 454-0129 Fax

Boeing SSFL





AS BUILT

Figure 1E

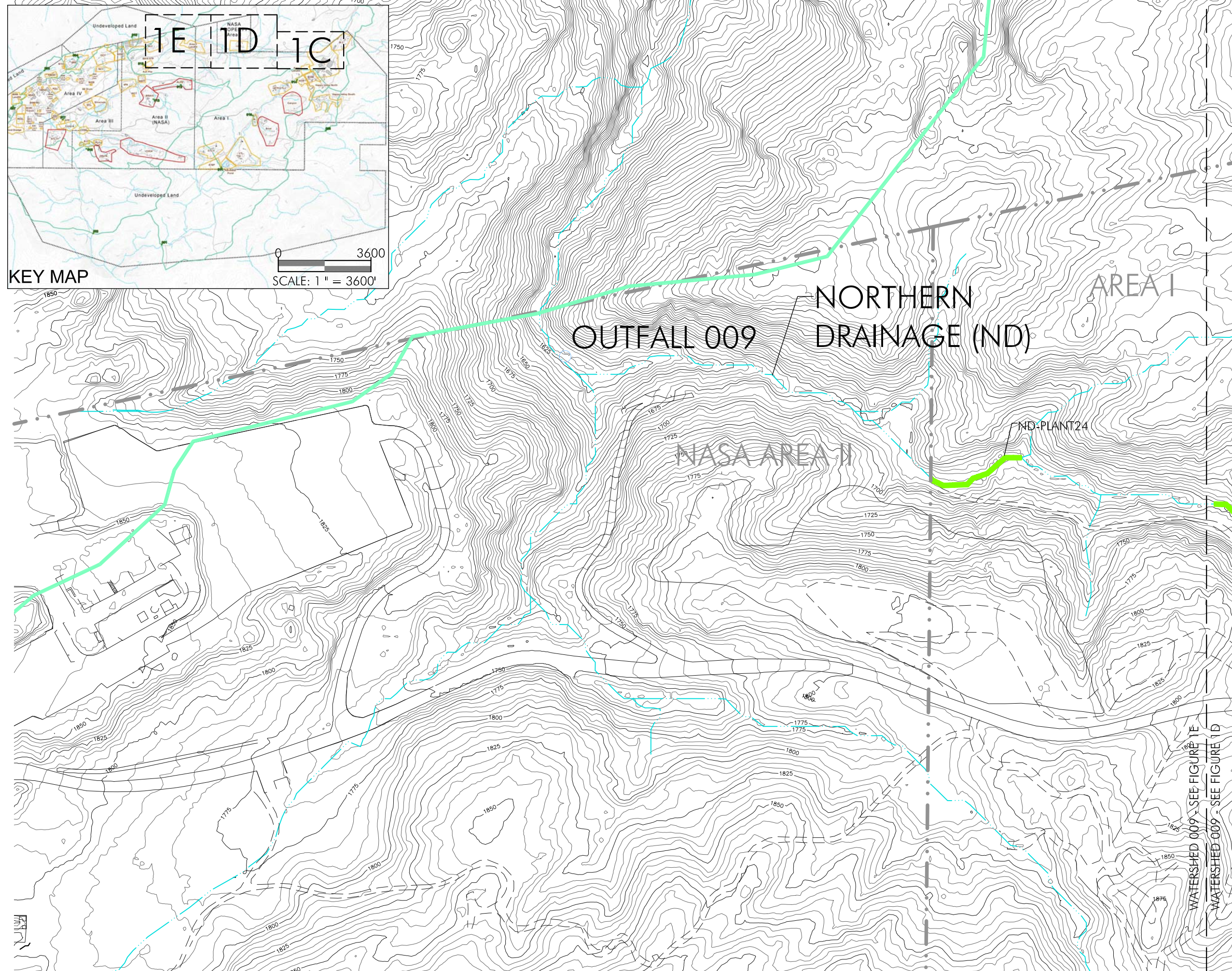
**Northern Drainage
 Containerized
 Planting Areas**



LEGEND

-  PLANTING AREA
-  WATERSHED
-  RFI BOUNDARY
-  STREAMS

Date: June 2011
 Map By: MWS, MCB
 Filepath: L:\Acad 2000 Files\17000\17166\dwg\Containerized Planting-
 As-Built\Containerized Planting Areas- Northern Drainage As-Built.dwg



APPENDIX B

Roles and Responsibilities

APPENDIX B

ROLES AND RESPONSIBILITIES

The following Boeing contractors assisted in the development of this RMMP: Geosyntec Consultants, Haley & Aldrich, Inc., MWH Americas, Inc., Padre Associates, Inc., and the Storm Water Expert Panel. Provided below is additional information about the roles and responsibilities for each contractor.

Geosyntec Consultants

6701 Center Drive West Suite 550

Los Angeles, California 90045

Contact: Brandon Steets, P.E. (805.897.3800, ext. 210)

- Discussion of existing conditions, summary of hydraulic analyses, restoration stability thresholds (Section 1.7);
- Development of design criteria, location, selection and sizing of stabilization measures, and site preparation (Section 4.1);
- Discussion of short-term construction erosion and sedimentation controls and selection, (Section 5);
- Development of operation and maintenance activities for selected channel restoration/stabilization measures (Section 6.1); and
- Development of performance standards, monitoring methods and monitoring schedule (Section 7.1).

Haley & Aldrich, Inc.

9040 Friars Road, Suite 220

San Diego, California 92108-5860

Contact: Richard Farson (619.285.7112)

- Cross section surveys and development of the United States Army Corps of Engineers (USACE) Hydraulic Engineering Centers River Analysis System (HEC-RAS) hydraulics model for existing conditions (Section 1.7.1.1), schedule (Section 10.0); and
- Editing of this report.

MWH Americas, Inc.

618 Michillinda Avenue, Suite 200

Arcadia, California 91007

Contact: Glenn Jaffe (818.391.4243)

- Geologic description (Section 1.6); and
- Permit requirements (Section 4.3).

APPENDIX B

ROLES AND RESPONSIBILITIES

Padre Associates, Inc.

1861 Knoll Drive

Ventura, California 93003

Contact: Chris Dunn (805.644.2220, ext 12)

- Discussion of compensatory mitigation for plants, terrestrial habitat and aquatic habitat (Section 2); Description of proposed restoration and mitigation site (Section 3);
- Rationale for mitigation success, site preparation, and planting, seeding and irrigation plans (Section 4.2);
- Development of performance standards, monitoring methods and monitoring schedule (Section 7.2); Reporting and completion of compensatory mitigation (Section 8.0); and
- Contingency measures (Section 9.0).

Surface Water Expert Panel

Dr. Michael Stenstrom (UCLA)

Dr. Michael Josselyn (WRA, Inc.)

Jon Jones, P.E. (Wright Water Engineering)

Dr. Robert Pitt (University of Alabama)

Dr. Robert Gearheart (Humboldt State University)

- Overall review and participation in the development of the plan with specific focus on problem identification, stream bed restoration actions, bank erosion control, and riparian planting measures.

G:\20090_SSFL\484-486 MitMon Workplan\Global\Deliverables\FINAL RMMP\Appendices\2011_0930_HAI_AppdxB_F.docx