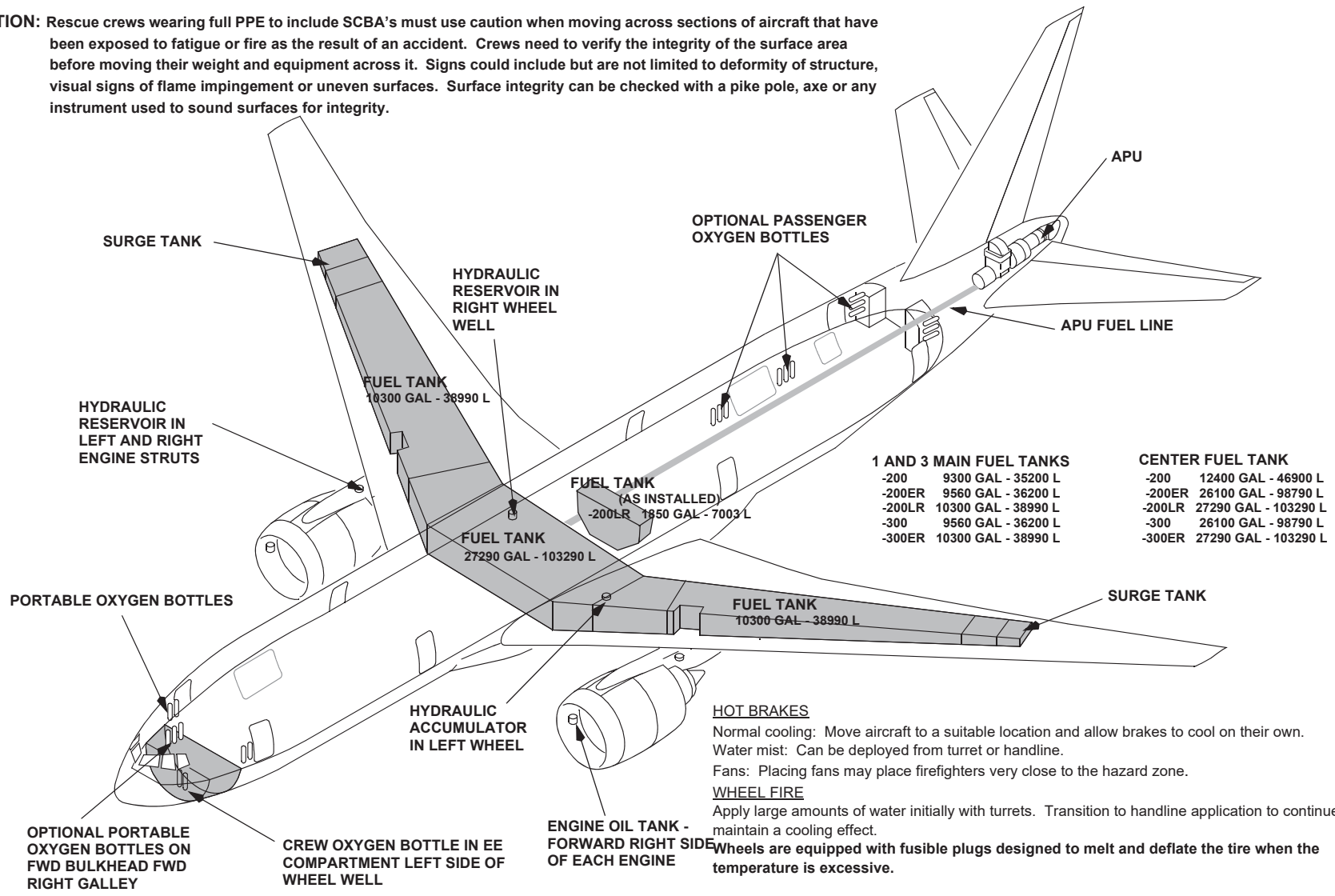


777-200 & 777-300 SERIES

FLAMMABLE MATERIAL LOCATIONS

CAUTION: Rescue crews wearing full PPE to include SCBA's must use caution when moving across sections of aircraft that have been exposed to fatigue or fire as the result of an accident. Crews need to verify the integrity of the surface area before moving their weight and equipment across it. Signs could include but are not limited to deformity of structure, visual signs of flame impingement or uneven surfaces. Surface integrity can be checked with a pike pole, axe or any instrument used to sound surfaces for integrity.



HOT BRAKES
 Normal cooling: Move aircraft to a suitable location and allow brakes to cool on their own.
 Water mist: Can be deployed from turret or handline.
 Fans: Placing fans may place firefighters very close to the hazard zone.

WHEEL FIRE
 Apply large amounts of water initially with turrets. Transition to handline application to continue and maintain a cooling effect.
 Wheels are equipped with fusible plugs designed to melt and deflate the tire when the temperature is excessive.

WARNING: Approach landing gear trucks from forward or aft at a 45 degree angle when approaching hot brakes or fighting a wheel fire, as rims and tires may pose a fragmentation hazard.

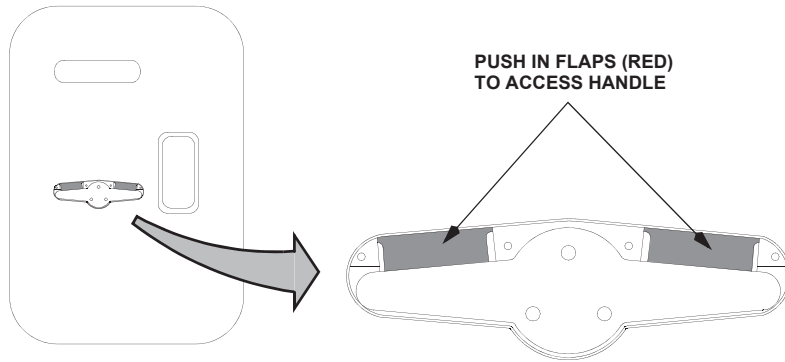
Copyright © Boeing. See title page for details.

777-200 & 777-300 SERIES

EMERGENCY RESCUE ACCESS-1

1 ENTRY/SERVICE DOOR/OVERWING EXIT EXTERNAL HANDLE

2 CUT-IN AREAS



NOTE: CUT-IN AREAS REQUIRE METAL CUTTING PORTABLE POWER EQUIPMENT. BECAUSE OF TYPE OF STRUCTURE AND POSSIBLE INJURY TO PERSONNEL WITHIN, IT IS RECOMMENDED THAT MAJOR EFFORT TO GAIN ACCESS BE DIRECTED TO HATCHES AND DOORS. URGENCY OF SITUATION WILL DICTATE THE NECESSITY FOR A CUT-IN.

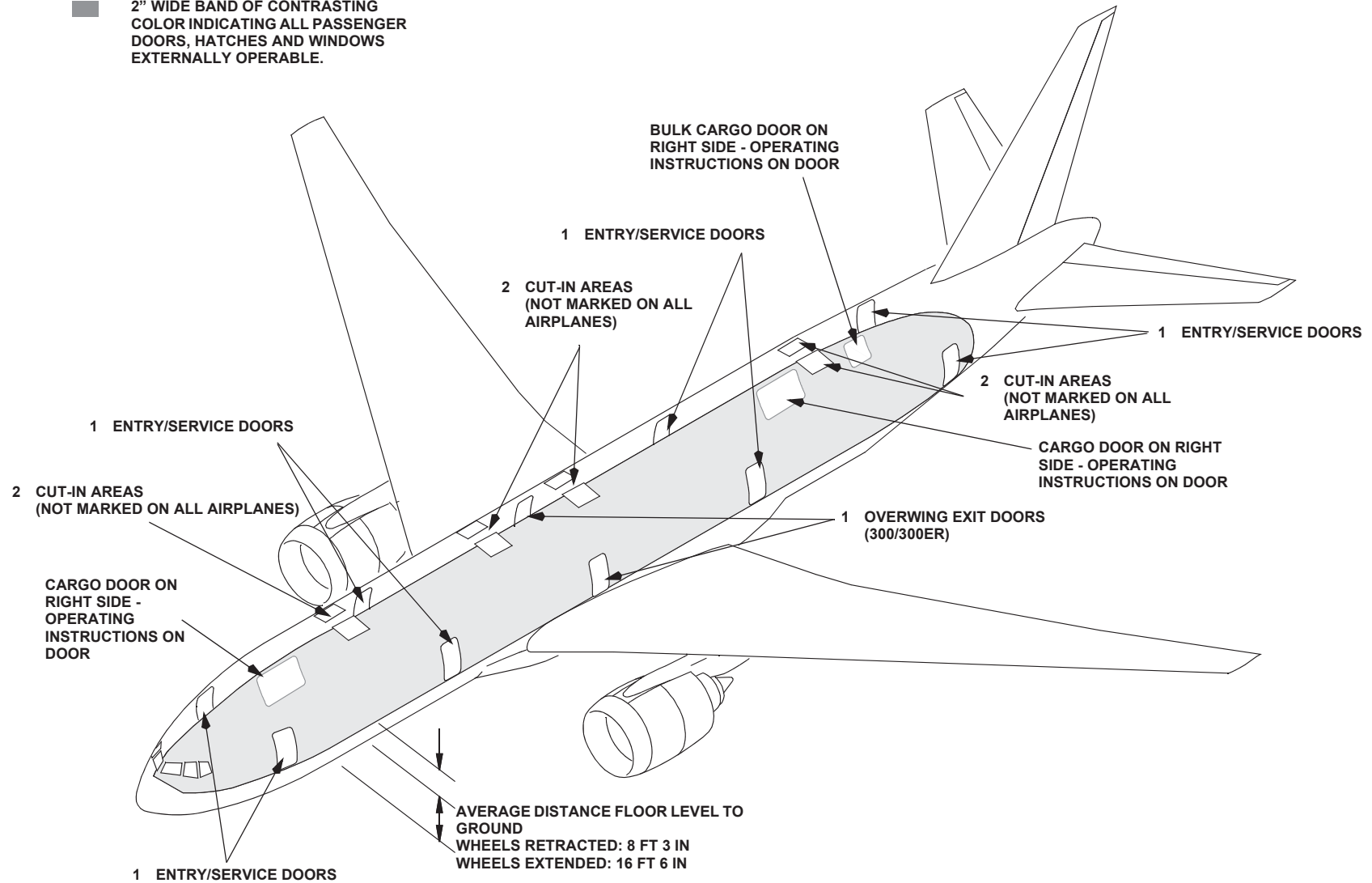
TO OPEN DOOR:

1. PUSH IN RED FLAPS.
2. PULL HANDLE FROM RECESS.
3. ROTATE HANDLE 180 DEGREES IN THE DIRECTION OF THE "OPEN" ARROW.
4. PULL DOOR OUTWARD.

777-200 & 777-300 SERIES

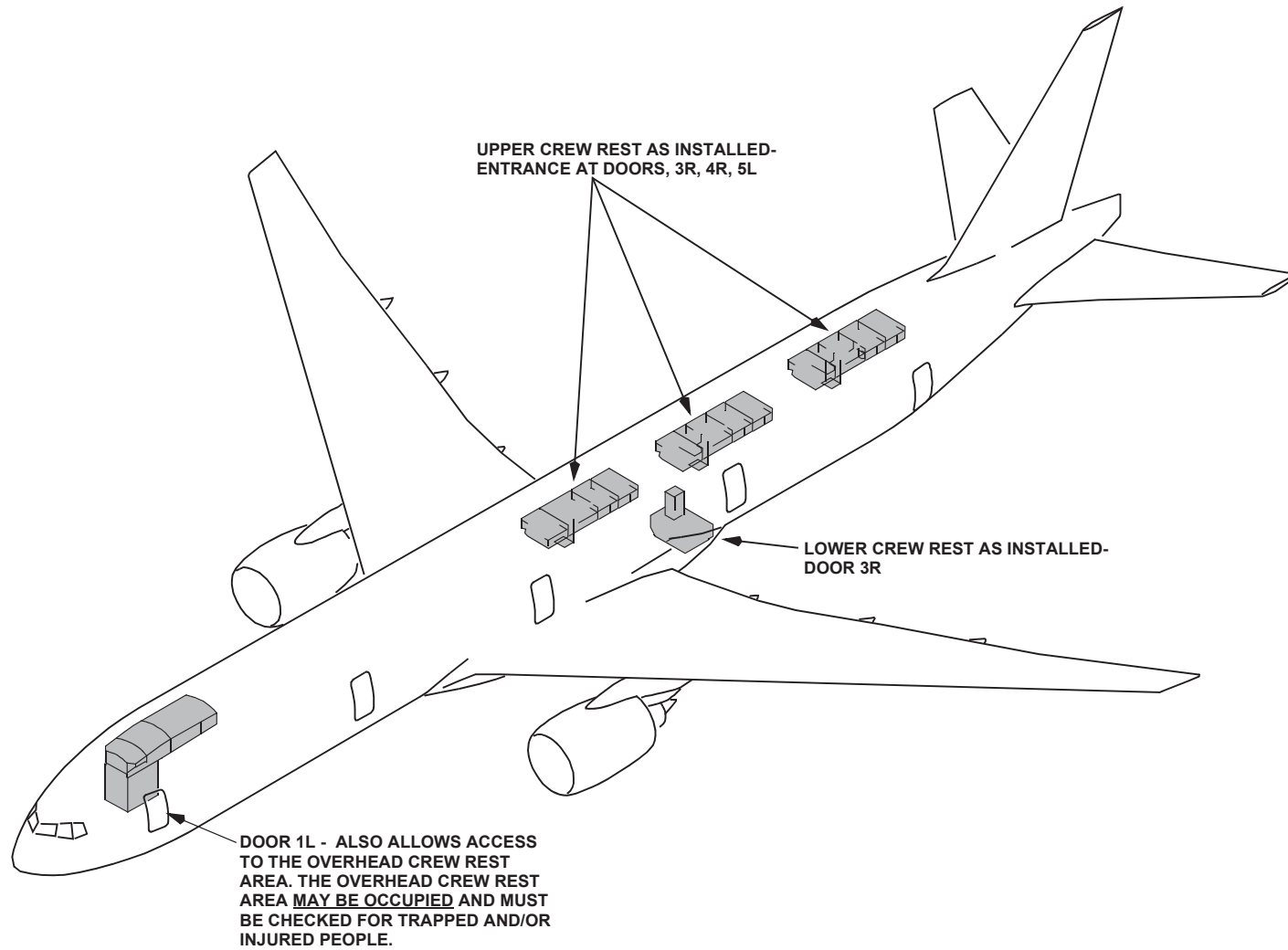
EMERGENCY RESCUE ACCESS-2

■ 2" WIDE BAND OF CONTRASTING COLOR INDICATING ALL PASSENGER DOORS, HATCHES AND WINDOWS EXTERNALLY OPERABLE.



777-200 & 777-300 SERIES

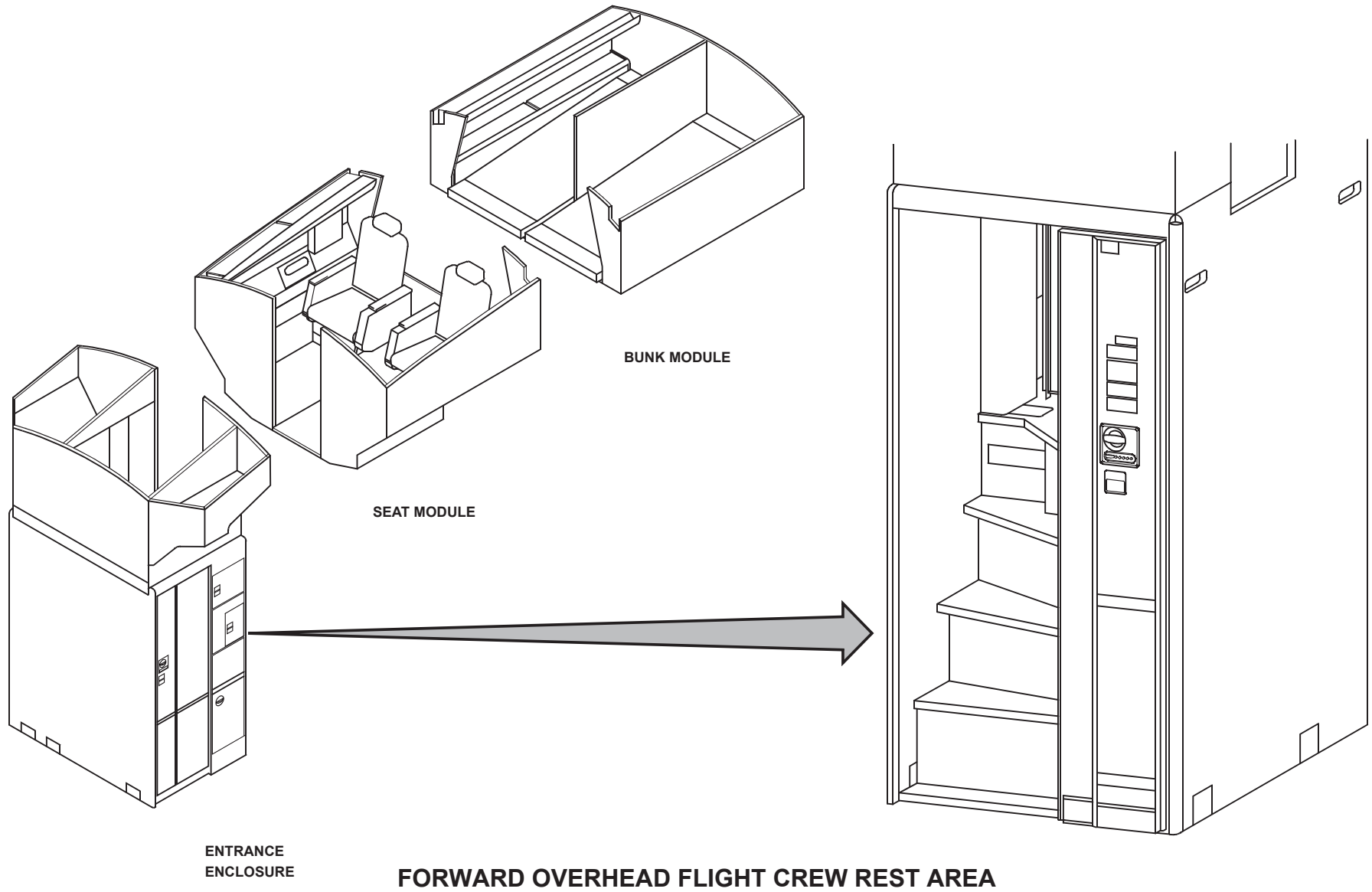
EMERGENCY RESCUE ACCESS-3



UPPER AND LOWER CREW REST AREAS

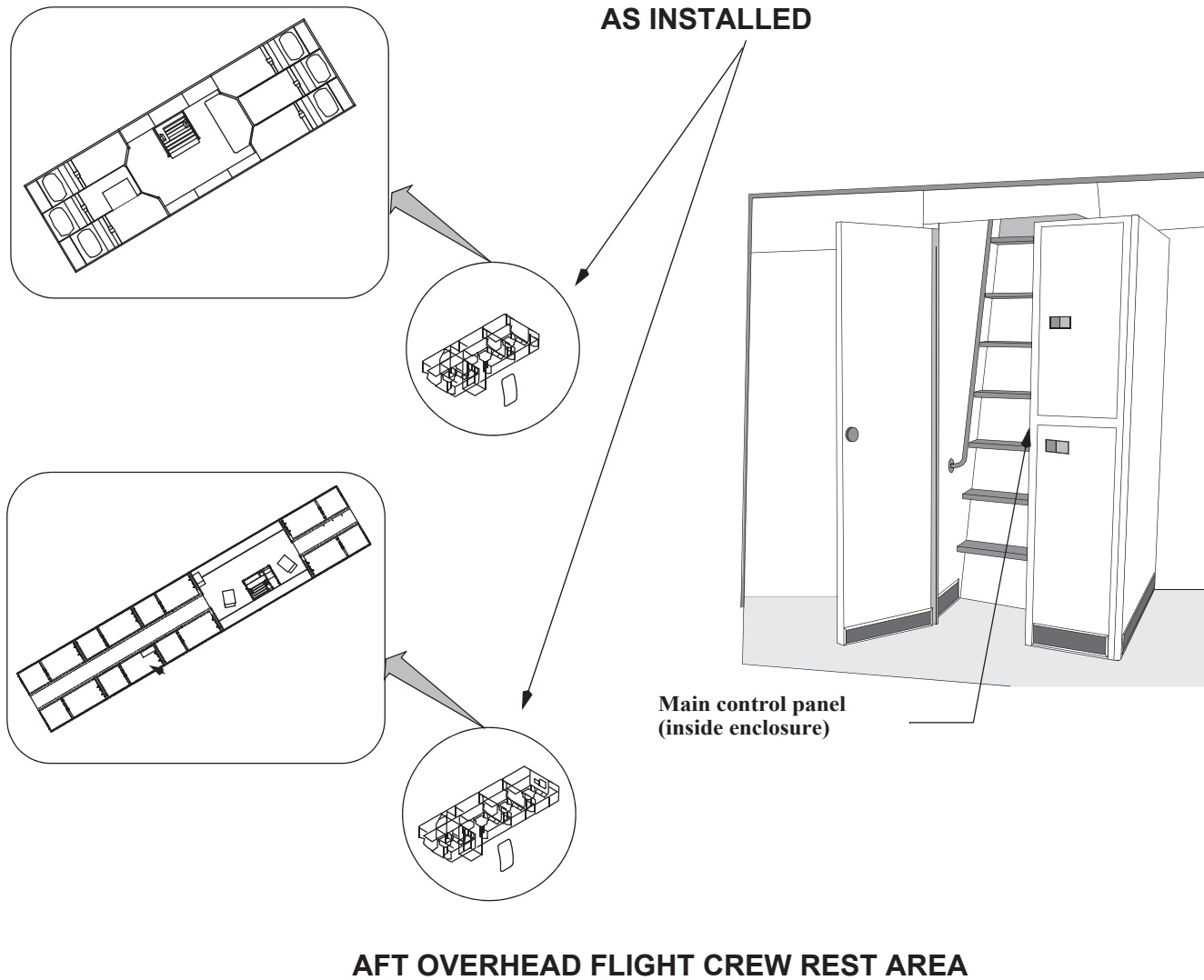
777-200 & 777-300 SERIES

EMERGENCY RESCUE ACCESS-4



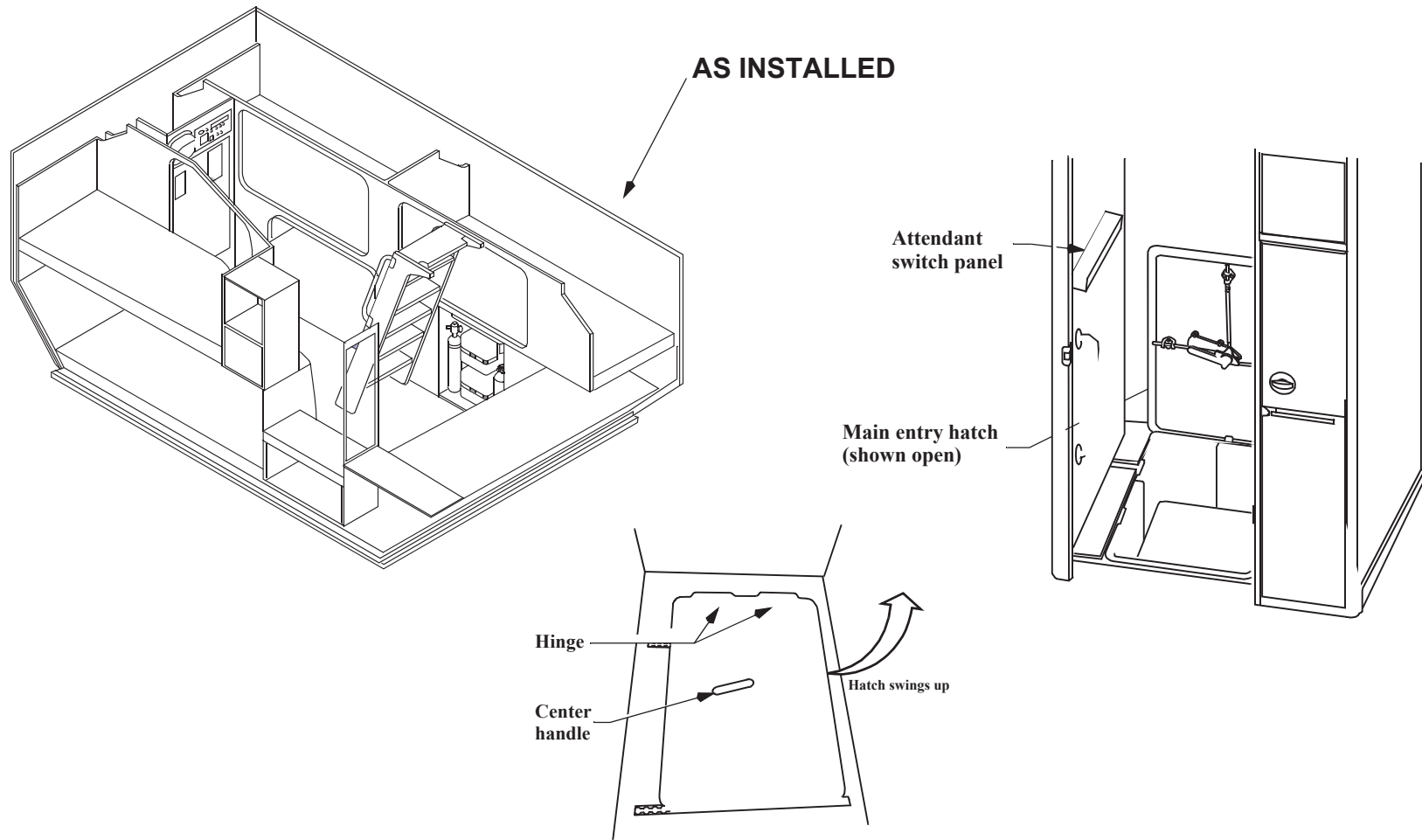
777-200 & 777-300 SERIES

EMERGENCY RESCUE ACCESS-5



777-200 & 777-300 SERIES

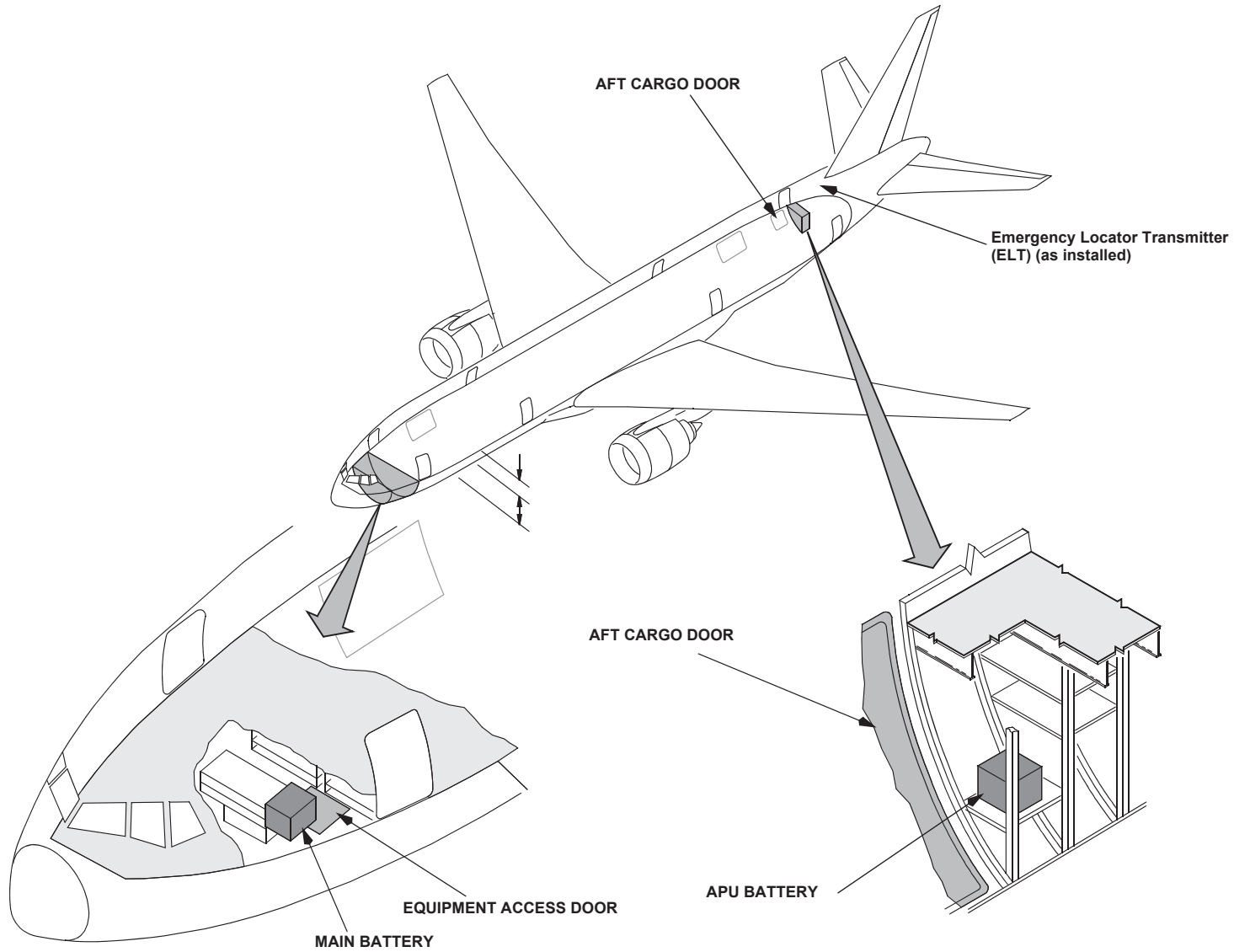
EMERGENCY RESCUE ACCESS-6



LOWER FLIGHT CREW REST AREA

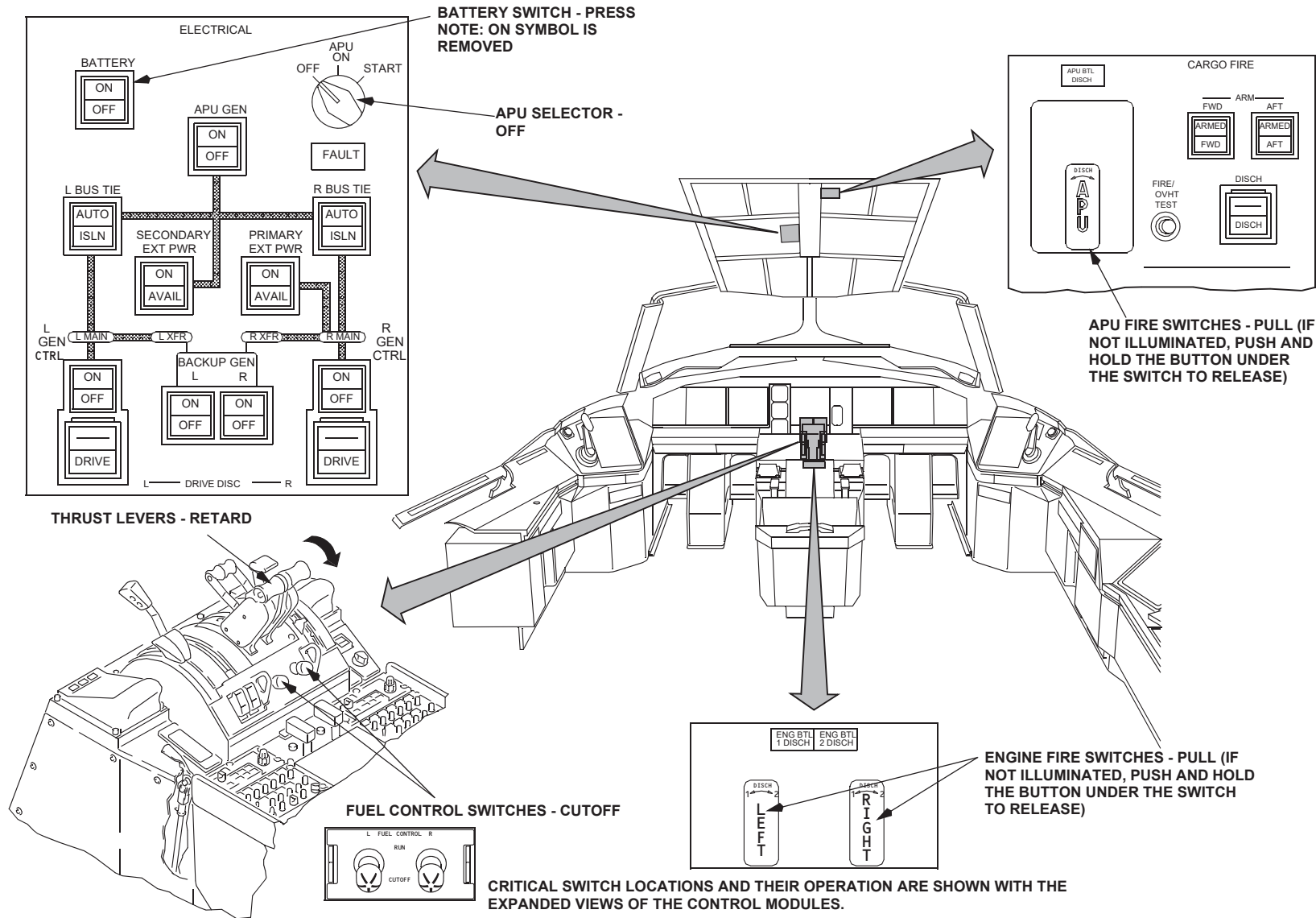
777-200 & 777-300 SERIES

BATTERY LOCATIONS



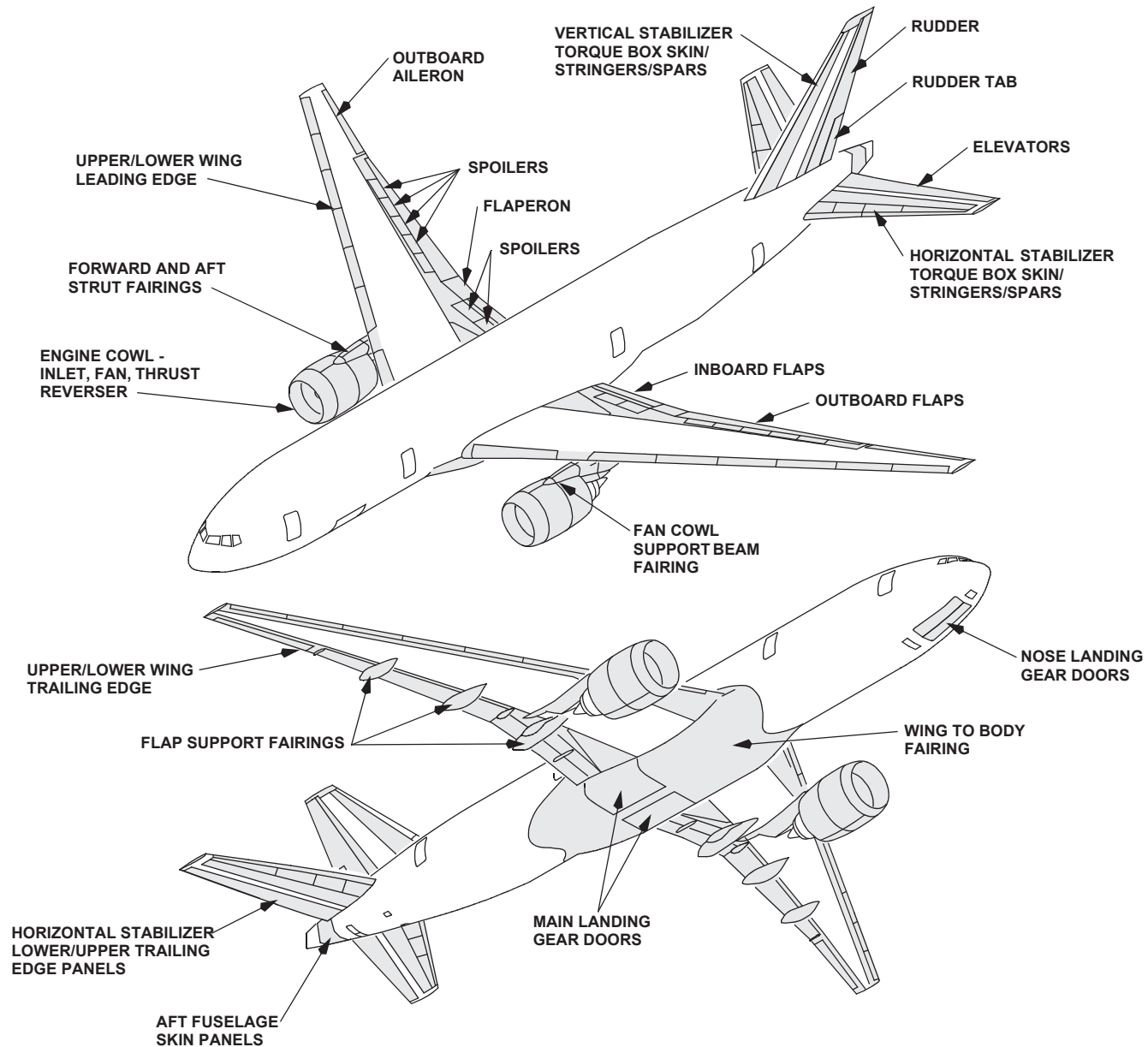
777-200 & 777-300 SERIES

FLIGHT DECK CONTROL SWITCH LOCATIONS



777-200 & 777-300 SERIES

COMPOSITE MATERIALS LOCATIONS



Copyright © Boeing. See title page for details.

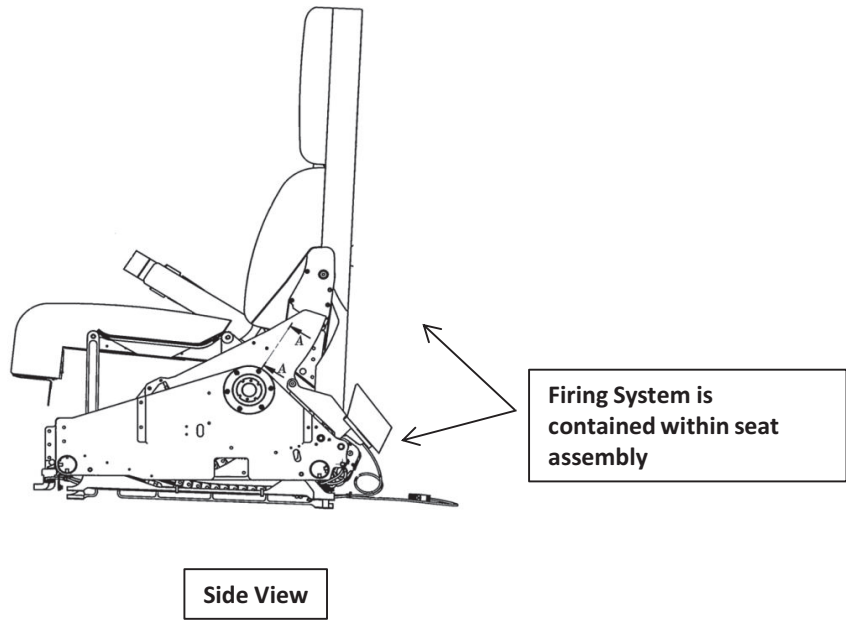
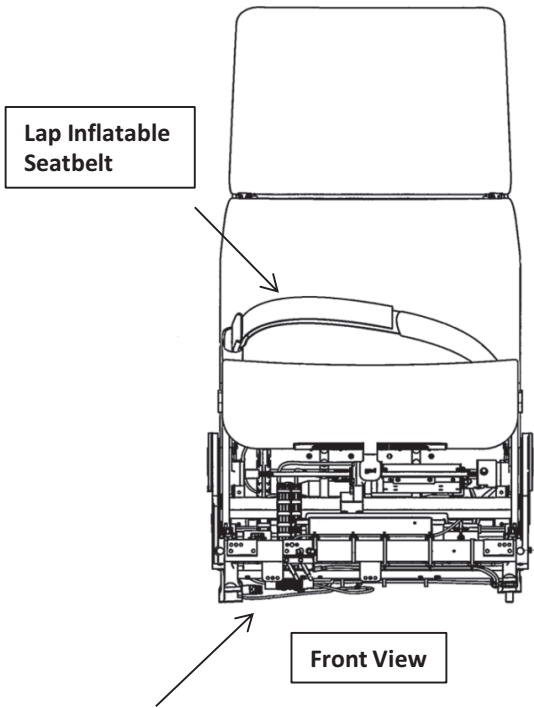
777-200 & 777-300 SERIES

PASSENGER SEATBELT AIRBAGS

Passenger Seatbelt Airbags

NOTE: Some models have optional seatbelt airbags. These seatbelts are noticeably thicker due to the airbag mechanism.

CAUTION: AVOID AREA IN FRONT OF THE UNDEPLOYED AIRBAG SEAT. DO NOT PLACE EQUIPMENT ON OR NEAR THE SEAT, STAND CLEAR OF UN-DEPLOYED AIRBAGS.



Note: Firing system is contained in seat assembly and consists of a high pressure (up to 7,400 psi) compressed gas cylinder (inflator) that is actuated by an independent battery.

WARNING: DO NOT ATTEMPT TO DISABLE THE SYSTEM AND NEVER ASSUME THAT DISCONNECTING POWER WILL DISABLE THE AIRBAG SYSTEM. THIS SHOULD ONLY BE DONE BY PROPERLY TRAINED MECHANICS.



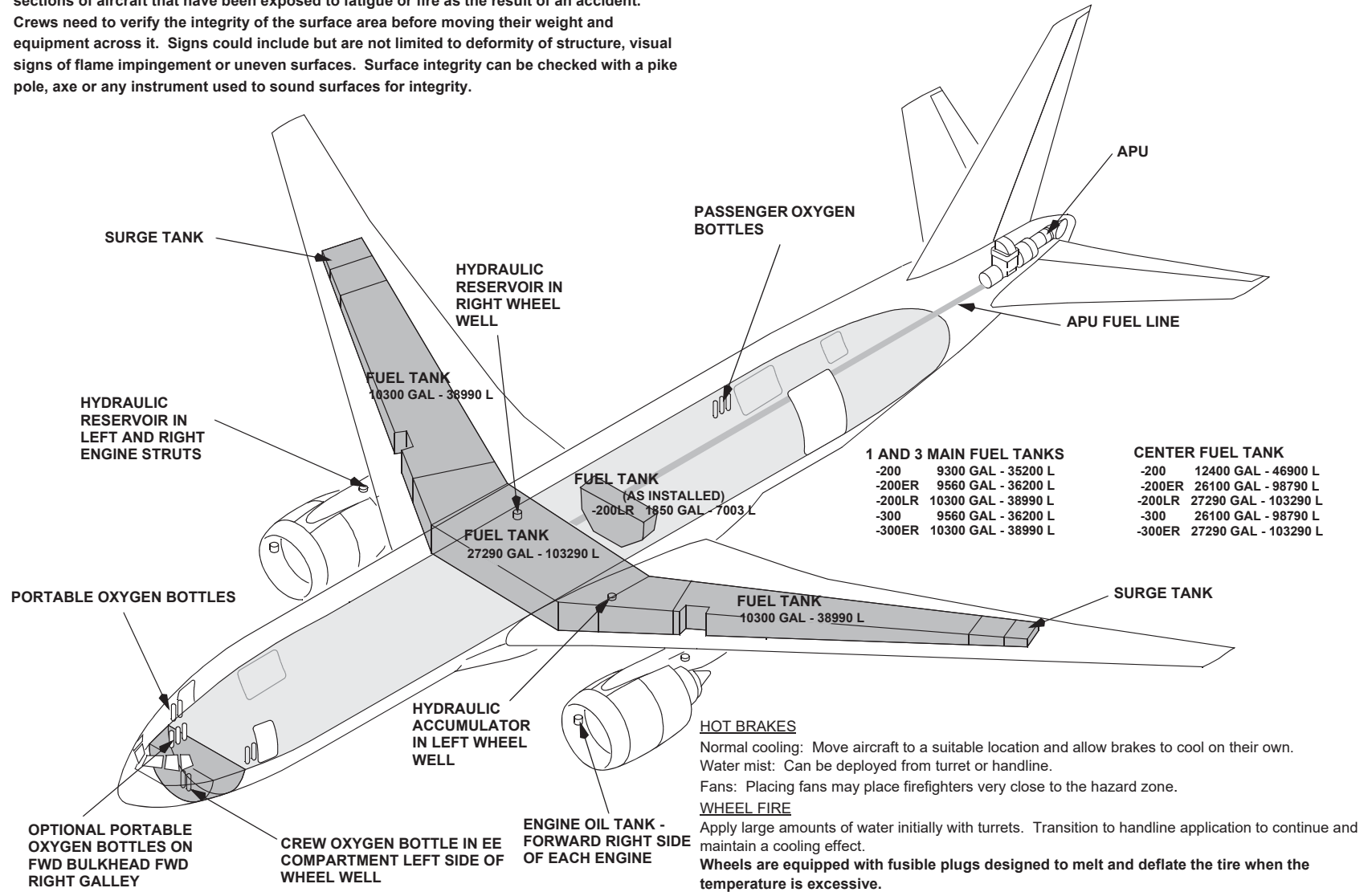
777-200 & 777-300 SERIES

Intentionally Blank

777 FREIGHTER SERIES

FLAMMABLE MATERIAL LOCATIONS

CAUTION: Rescue crews wearing full PPE to include SCBA's must use caution when moving across sections of aircraft that have been exposed to fatigue or fire as the result of an accident. Crews need to verify the integrity of the surface area before moving their weight and equipment across it. Signs could include but are not limited to deformity of structure, visual signs of flame impingement or uneven surfaces. Surface integrity can be checked with a pike pole, axe or any instrument used to sound surfaces for integrity.

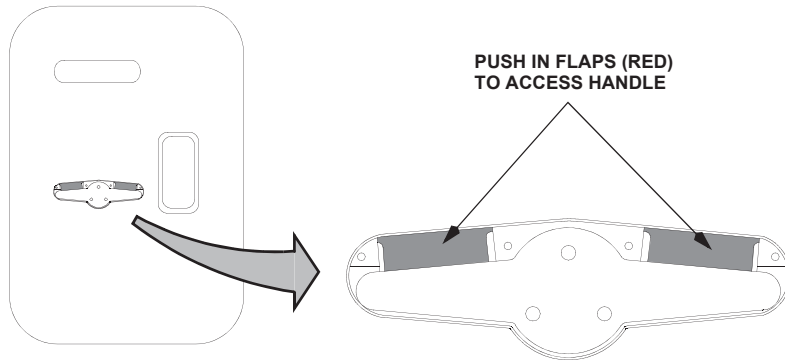


WARNING: Approach landing gear trucks from forward or aft at a 45 degree angle when approaching hot brakes or fighting a wheel fire, as rims and tires may pose a fragmentation hazard.

Copyright © Boeing. See title page for details.

777 FREIGHTER SERIES

1 ENTRY/SERVICE DOOR EXTERNAL HANDLE



TO OPEN DOOR:

1. PUSH IN RED FLAPS.
2. PULL HANDLE FROM RECESS.
3. ROTATE HANDLE 180 DEGREES IN THE DIRECTION OF THE "OPEN" ARROW.
4. PULL DOOR OUTWARD.

EMERGENCY RESCUE ACCESS-1

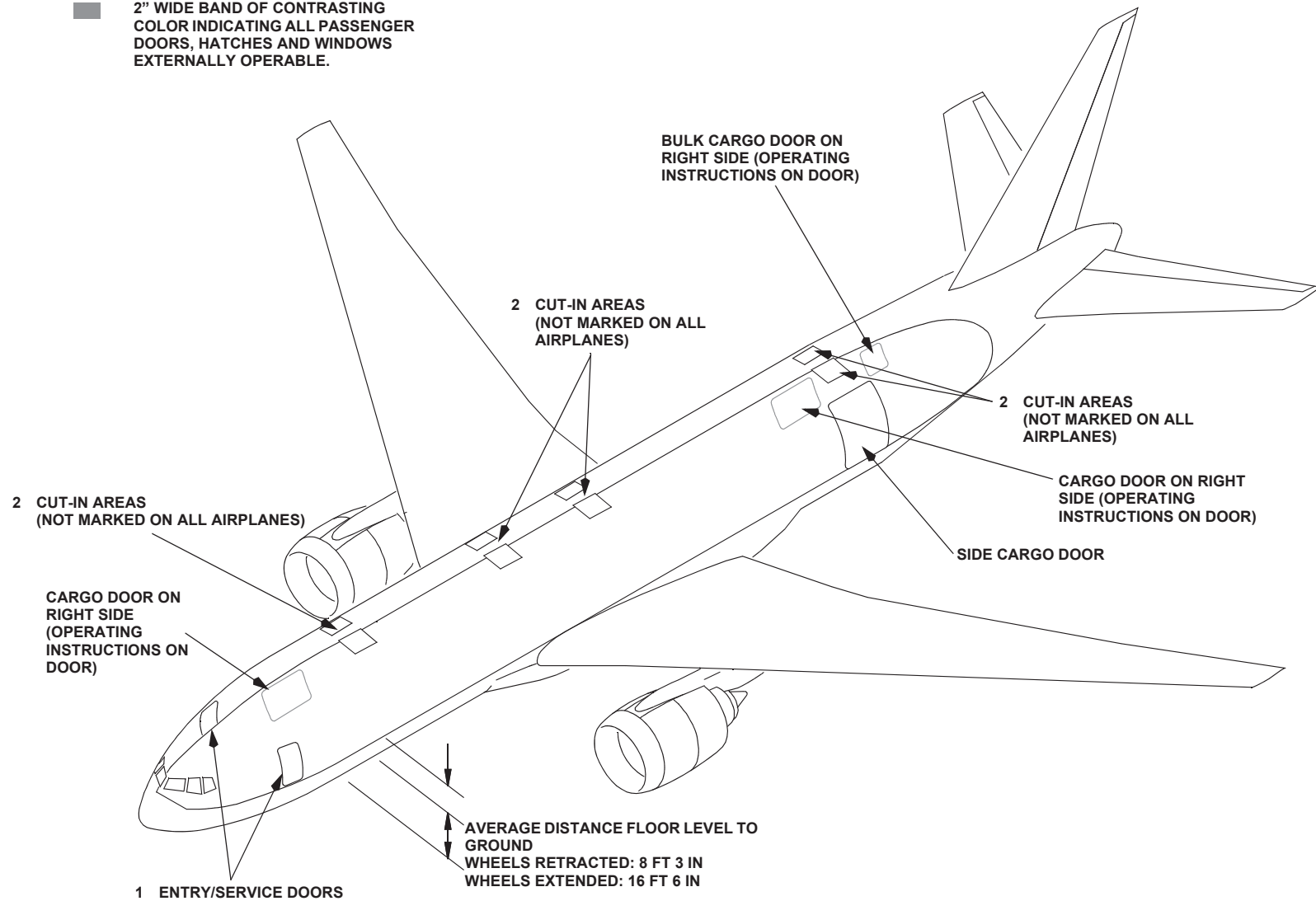
2 CUT-IN AREAS

NOTE: CUT-IN AREAS REQUIRE METAL CUTTING PORTABLE POWER EQUIPMENT. BECAUSE OF TYPE OF STRUCTURE AND POSSIBLE INJURY TO PERSONNEL WITHIN, IT IS RECOMMENDED THAT MAJOR EFFORT TO GAIN ACCESS BE DIRECTED TO HATCHES AND DOORS. URGENCY OF SITUATION WILL DICTATE THE NECESSITY FOR A CUT-IN.

777 FREIGHTER SERIES

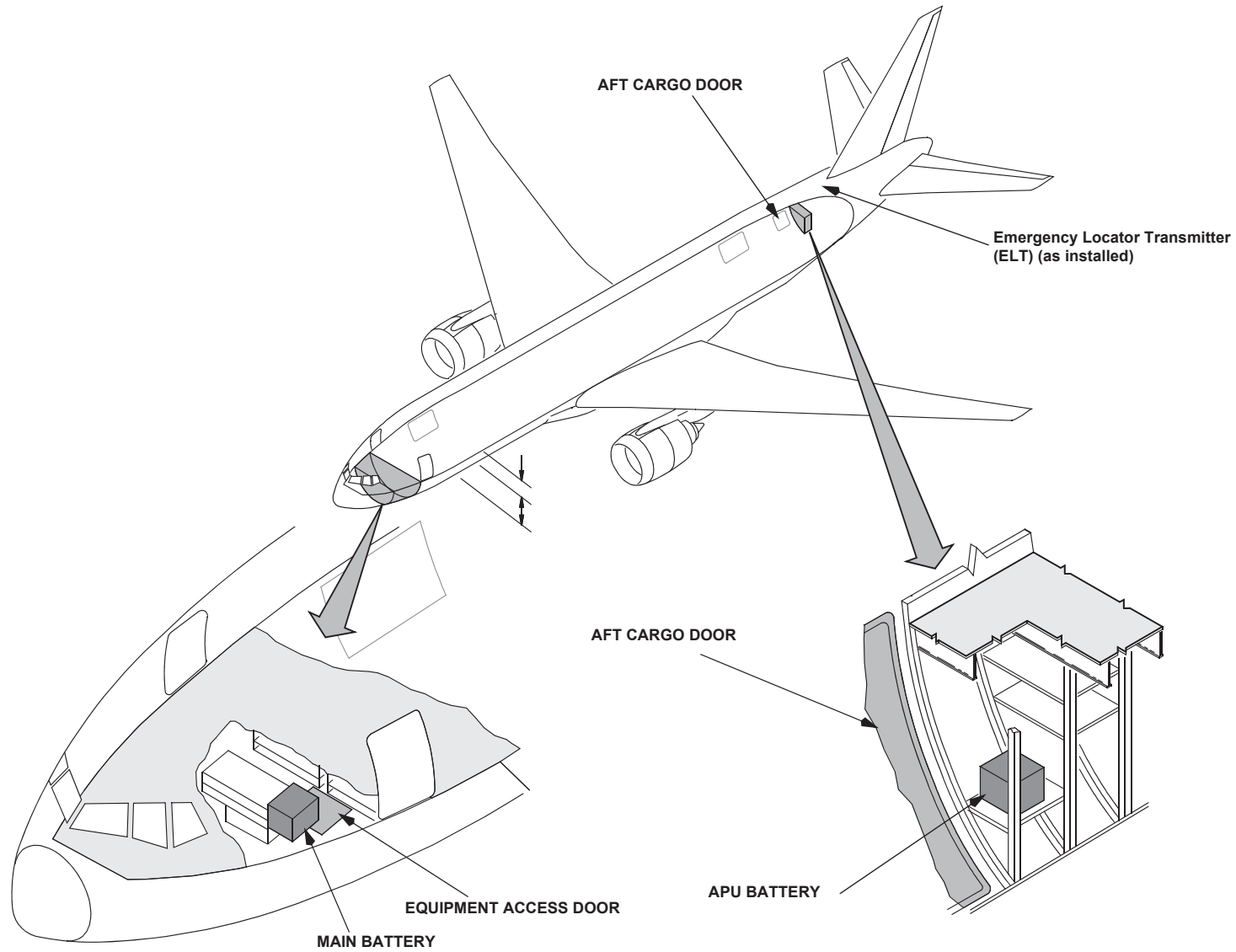
EMERGENCY RESCUE ACCESS-2

■ 2" WIDE BAND OF CONTRASTING COLOR INDICATING ALL PASSENGER DOORS, HATCHES AND WINDOWS EXTERNALLY OPERABLE.



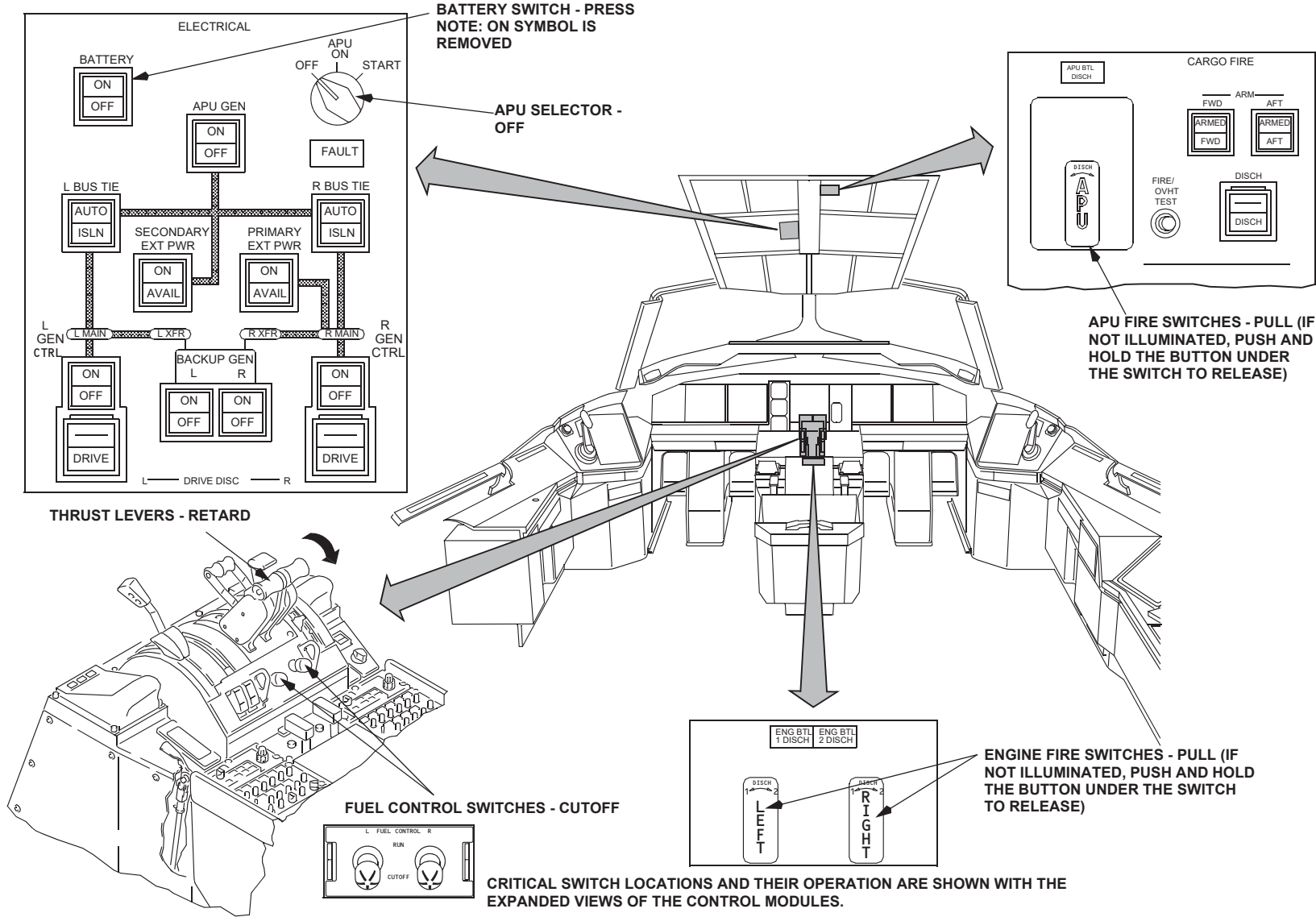
777 FREIGHTER SERIES

BATTERY LOCATIONS



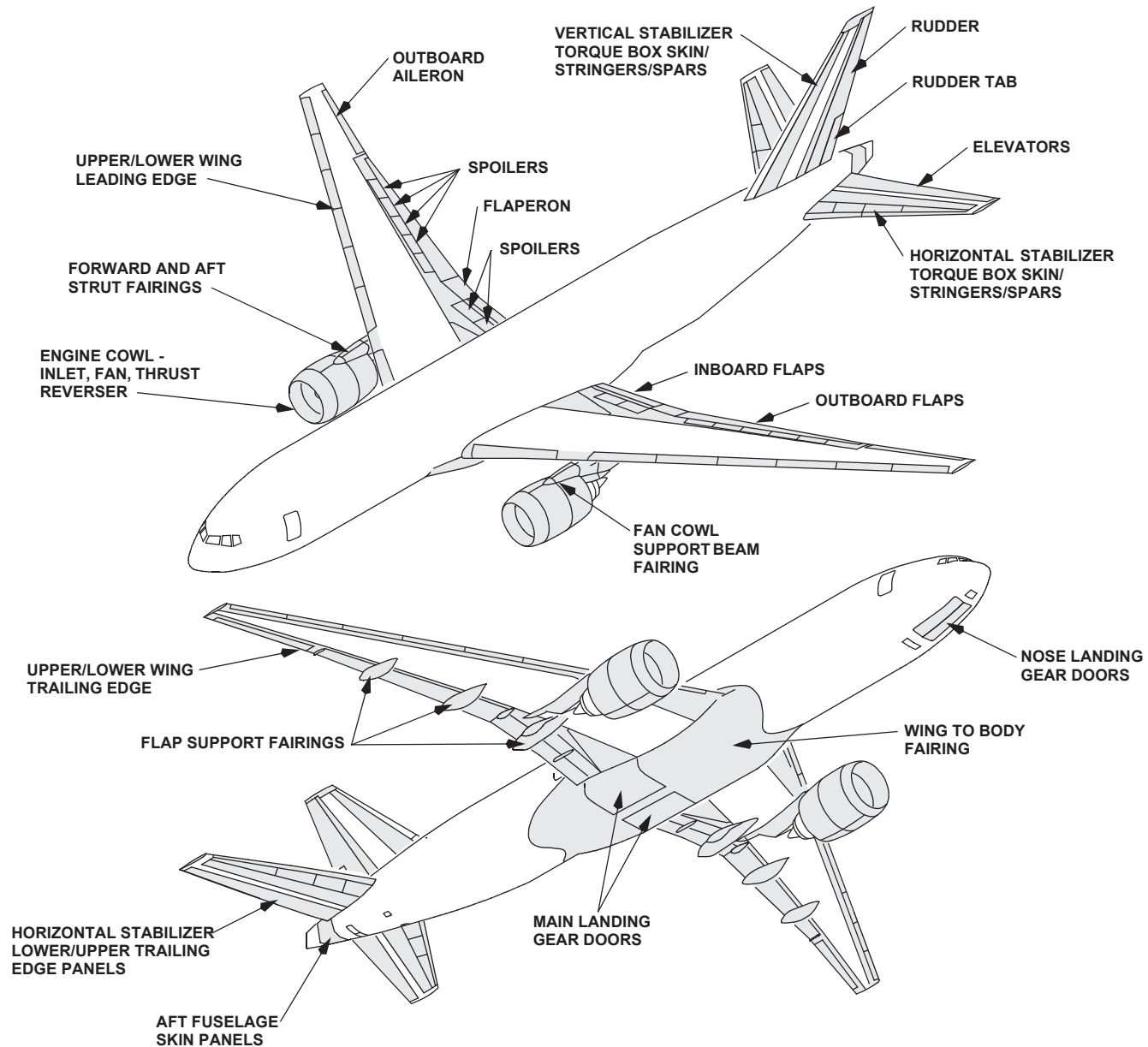
777 FREIGHTER SERIES

FLIGHT DECK CONTROL SWITCH LOCATIONS



777 FREIGHTER SERIES

COMPOSITE MATERIALS LOCATIONS

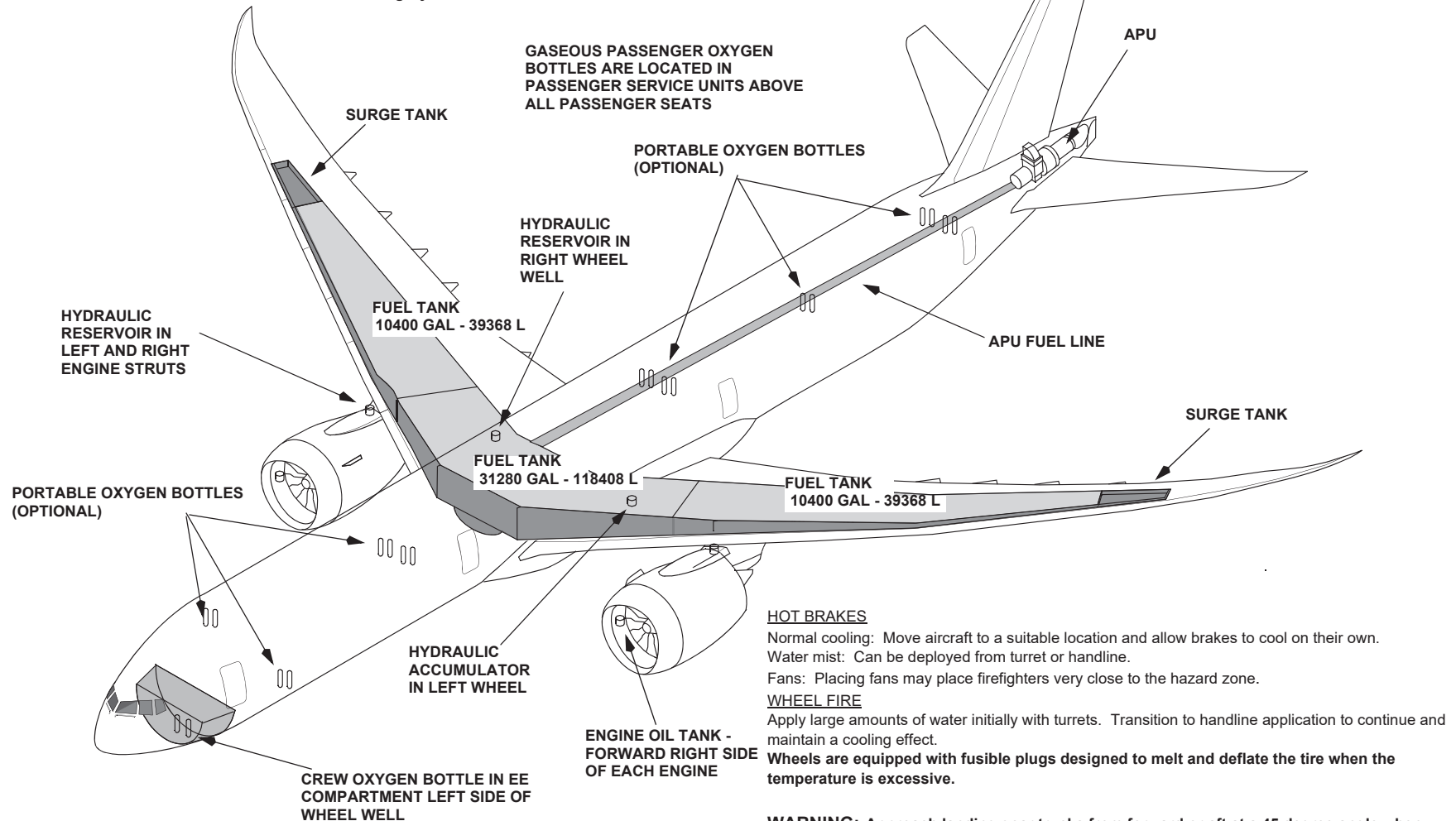


Copyright © Boeing. See title page for details.

777-8 & 777-9 SERIES

FLAMMABLE MATERIAL LOCATIONS

CAUTION: Rescue crews wearing full PPE to include SCBA's must use caution when moving across sections of aircraft that have been exposed to fatigue or fire as the result of an accident. Crews need to verify the integrity of the surface area before moving their weight and equipment across it. Signs could include but are not limited to deformity of structure, visual signs of flame impingement or uneven surfaces. Surface integrity can be checked with a pike pole, axe or any instrument used to sound surfaces for integrity.



HOT BRAKES
 Normal cooling: Move aircraft to a suitable location and allow brakes to cool on their own.
 Water mist: Can be deployed from turret or handline.
 Fans: Placing fans may place firefighters very close to the hazard zone.

WHEEL FIRE
 Apply large amounts of water initially with turrets. Transition to handline application to continue and maintain a cooling effect.
 Wheels are equipped with fusible plugs designed to melt and deflate the tire when the temperature is excessive.

WARNING: Approach landing gear trucks from forward or aft at a 45 degree angle when approaching hot brakes or fighting a wheel fire, as rims and tires may pose a fragmentation hazard.

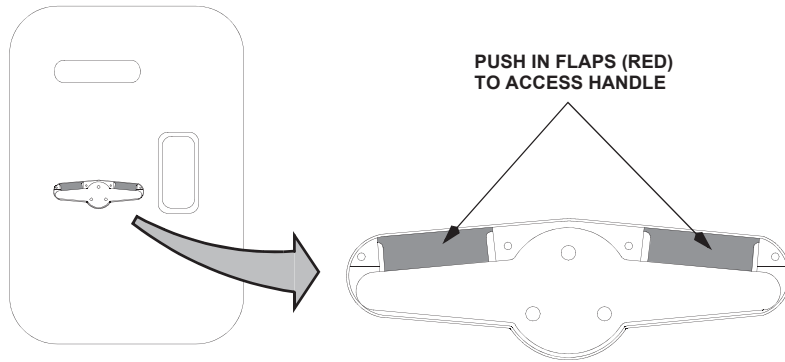
Copyright © Boeing. See title page for details.

777-8 & 777-9 SERIES

EMERGENCY RESCUE ACCESS-1

1 ENTRY/SERVICE DOOR/OVERWING EXIT EXTERNAL HANDLE

2 CUT-IN AREAS



NOTE: CUT-IN AREAS REQUIRE METAL CUTTING PORTABLE POWER EQUIPMENT. BECAUSE OF TYPE OF STRUCTURE AND POSSIBLE INJURY TO PERSONNEL WITHIN, IT IS RECOMMENDED THAT MAJOR EFFORT TO GAIN ACCESS BE DIRECTED TO HATCHES AND DOORS. URGENCY OF SITUATION WILL DICTATE THE NECESSITY FOR A CUT-IN.

TO OPEN DOOR:

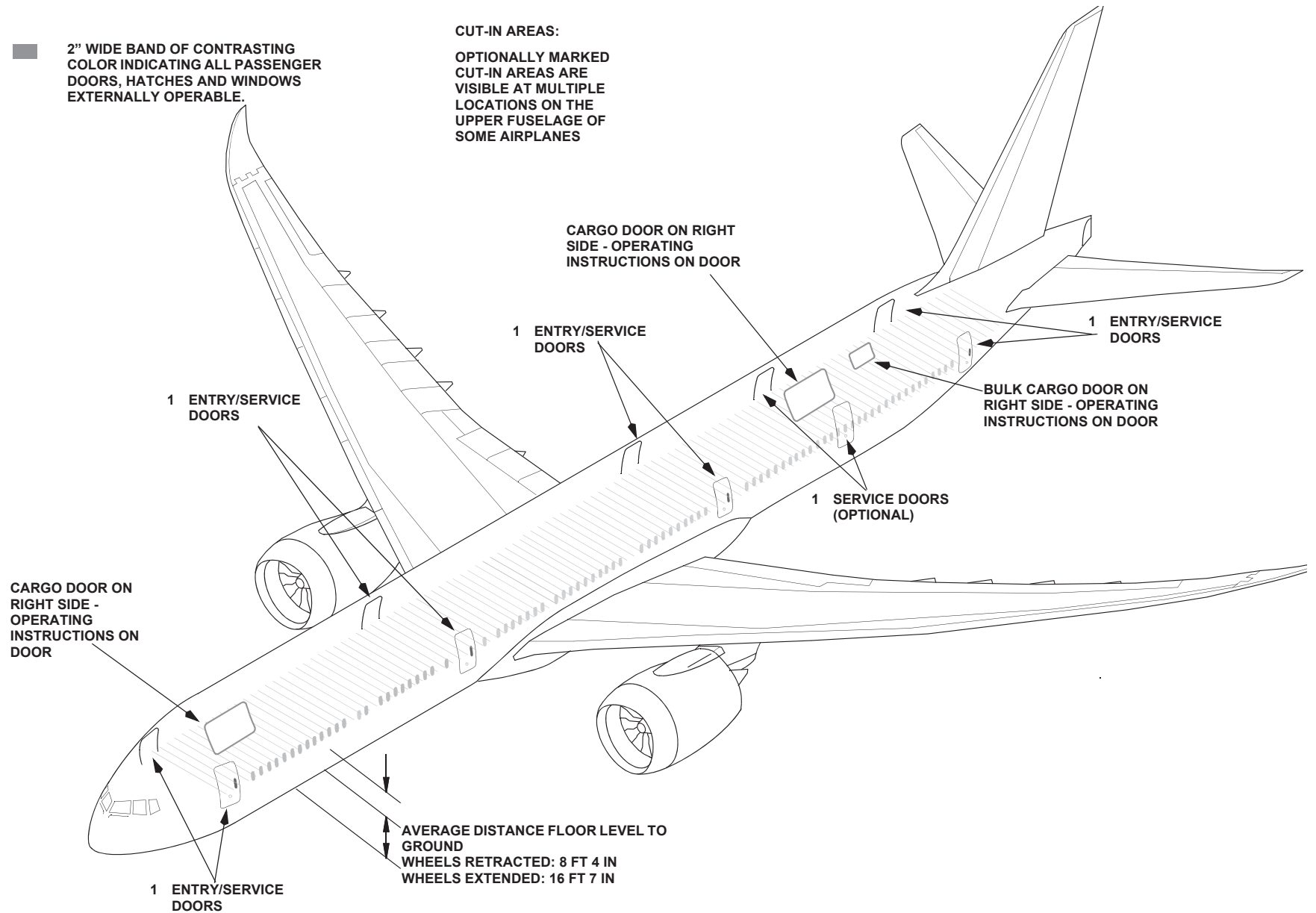
1. PUSH IN RED FLAPS.
2. PULL HANDLE FROM RECESS.
3. ROTATE HANDLE 180 DEGREES IN THE DIRECTION OF THE "OPEN" ARROW.
4. PULL DOOR OUTWARD.

777-8 & 777-9 SERIES

EMERGENCY RESCUE ACCESS-2

2" WIDE BAND OF CONTRASTING COLOR INDICATING ALL PASSENGER DOORS, HATCHES AND WINDOWS EXTERNALLY OPERABLE.

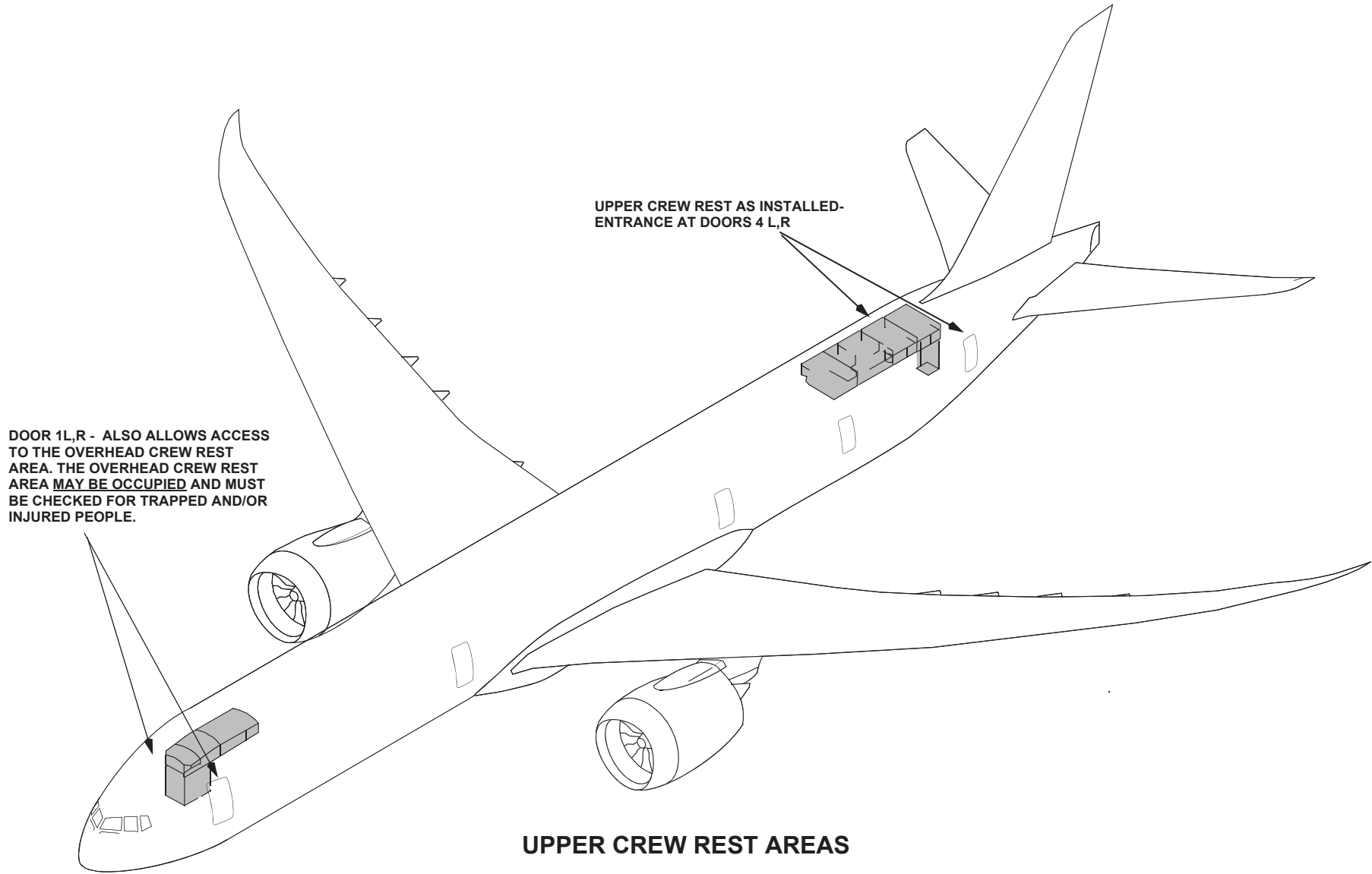
CUT-IN AREAS:
OPTIONALLY MARKED CUT-IN AREAS ARE VISIBLE AT MULTIPLE LOCATIONS ON THE UPPER FUSELAGE OF SOME AIRPLANES



Copyright © Boeing. See title page for details.

777-8 & 777-9 SERIES

EMERGENCY RESCUE ACCESS-3



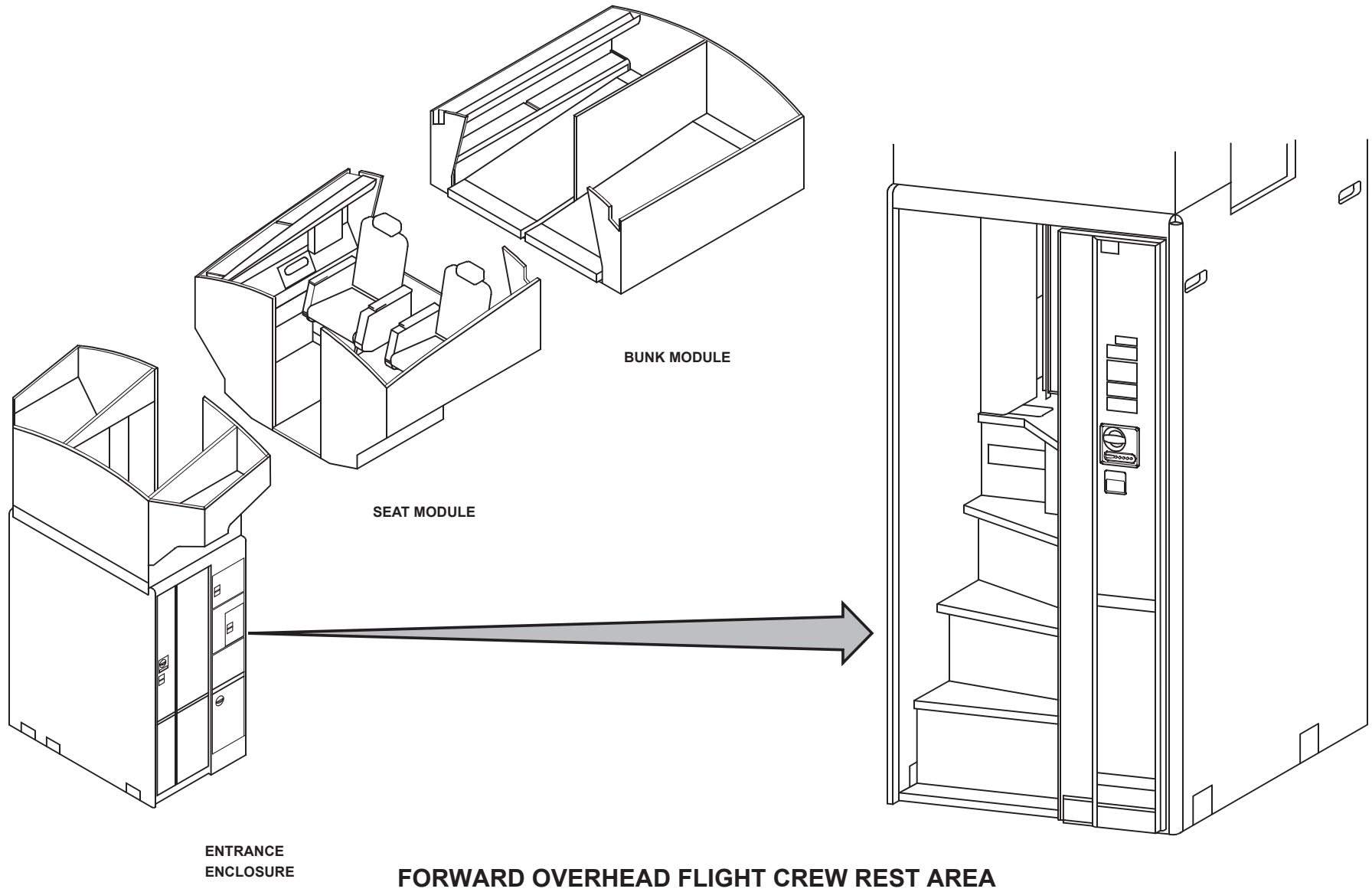
UPPER CREW REST AS INSTALLED-
ENTRANCE AT DOORS 4 L,R

DOOR 1L,R - ALSO ALLOWS ACCESS
TO THE OVERHEAD CREW REST
AREA. THE OVERHEAD CREW REST
AREA MAY BE OCCUPIED AND MUST
BE CHECKED FOR TRAPPED AND/OR
INJURED PEOPLE.

UPPER CREW REST AREAS

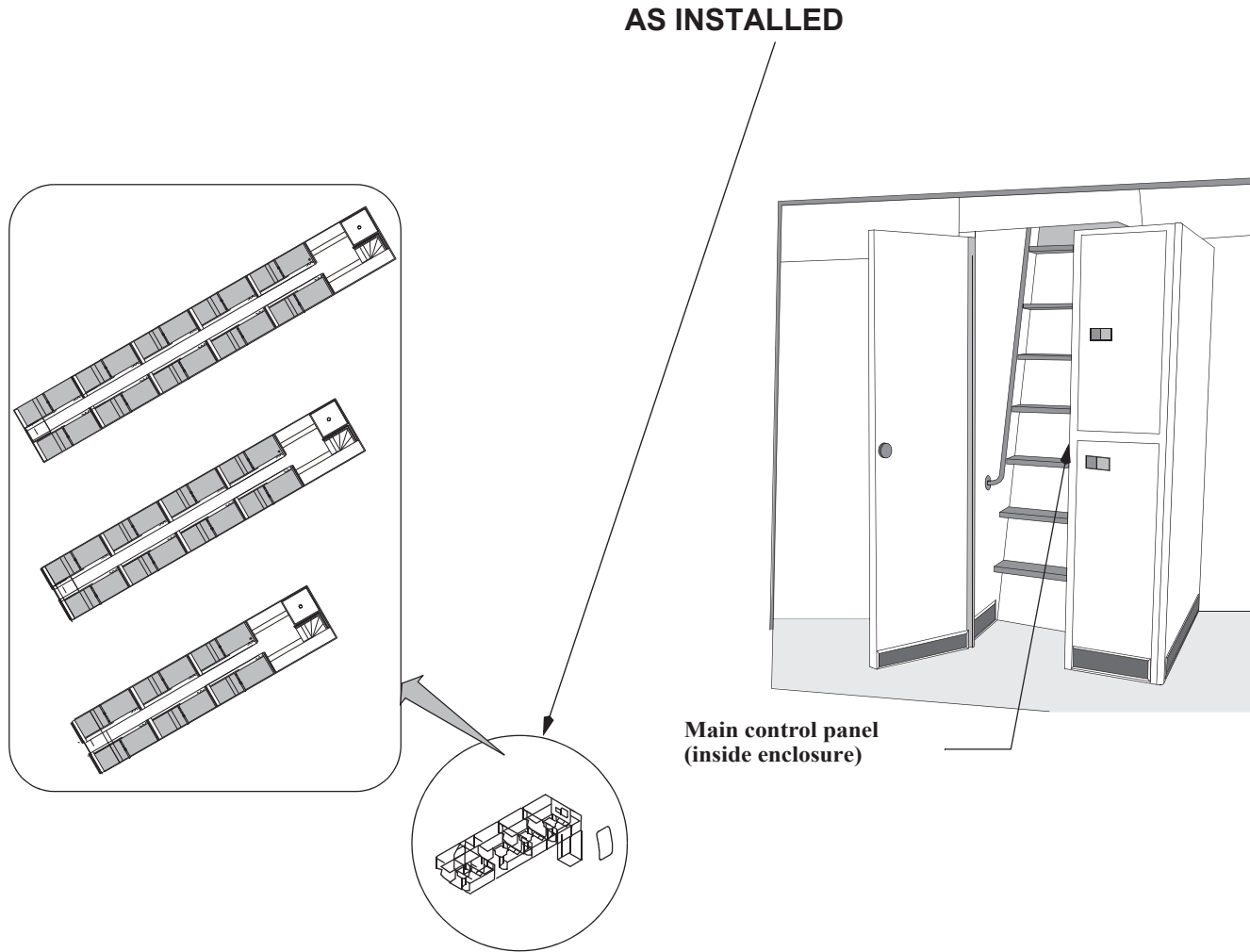
777-8 & 777-9 SERIES

EMERGENCY RESCUE ACCESS-4



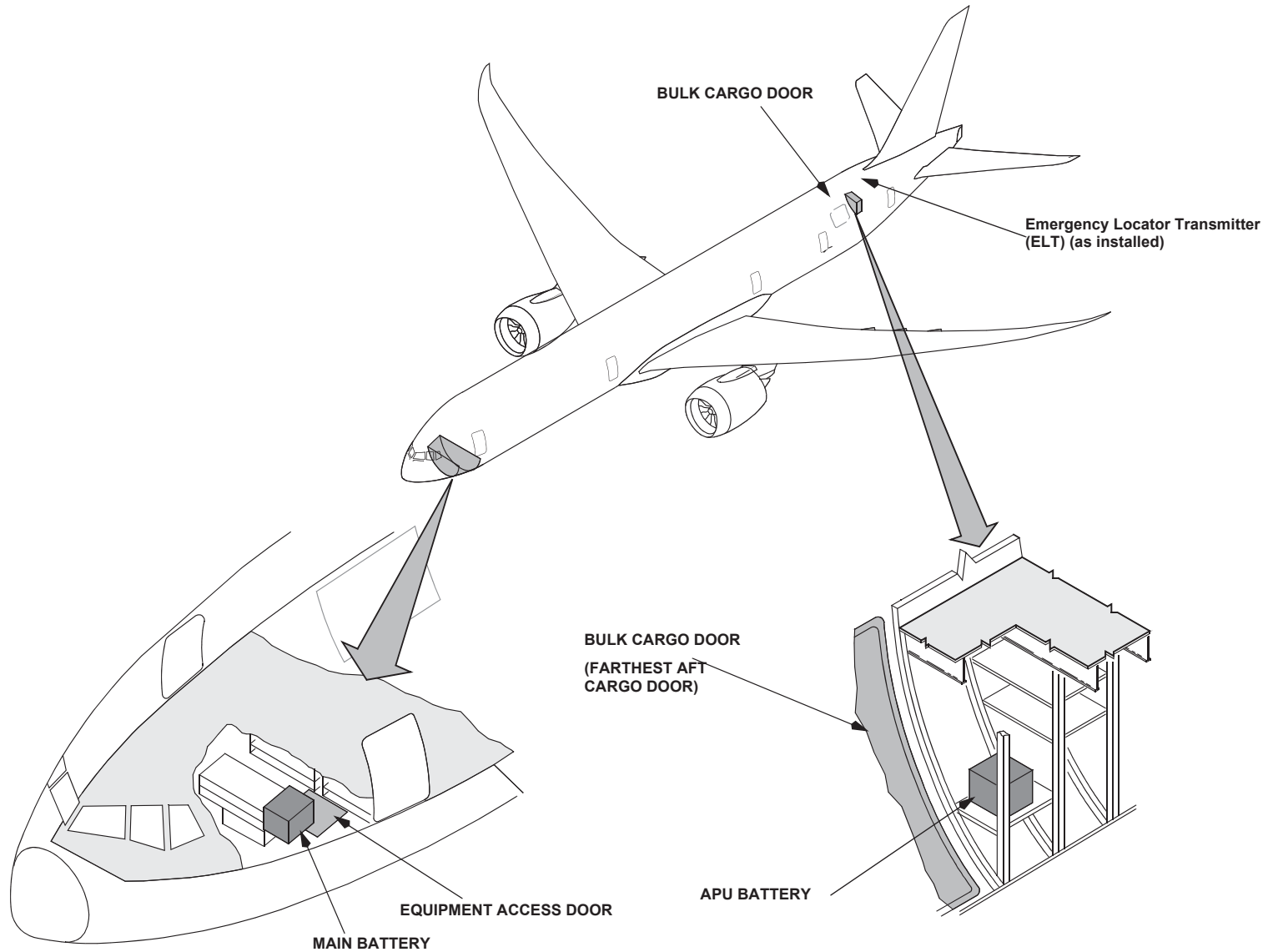
777-8 & 777-9 SERIES

EMERGENCY RESCUE ACCESS-5



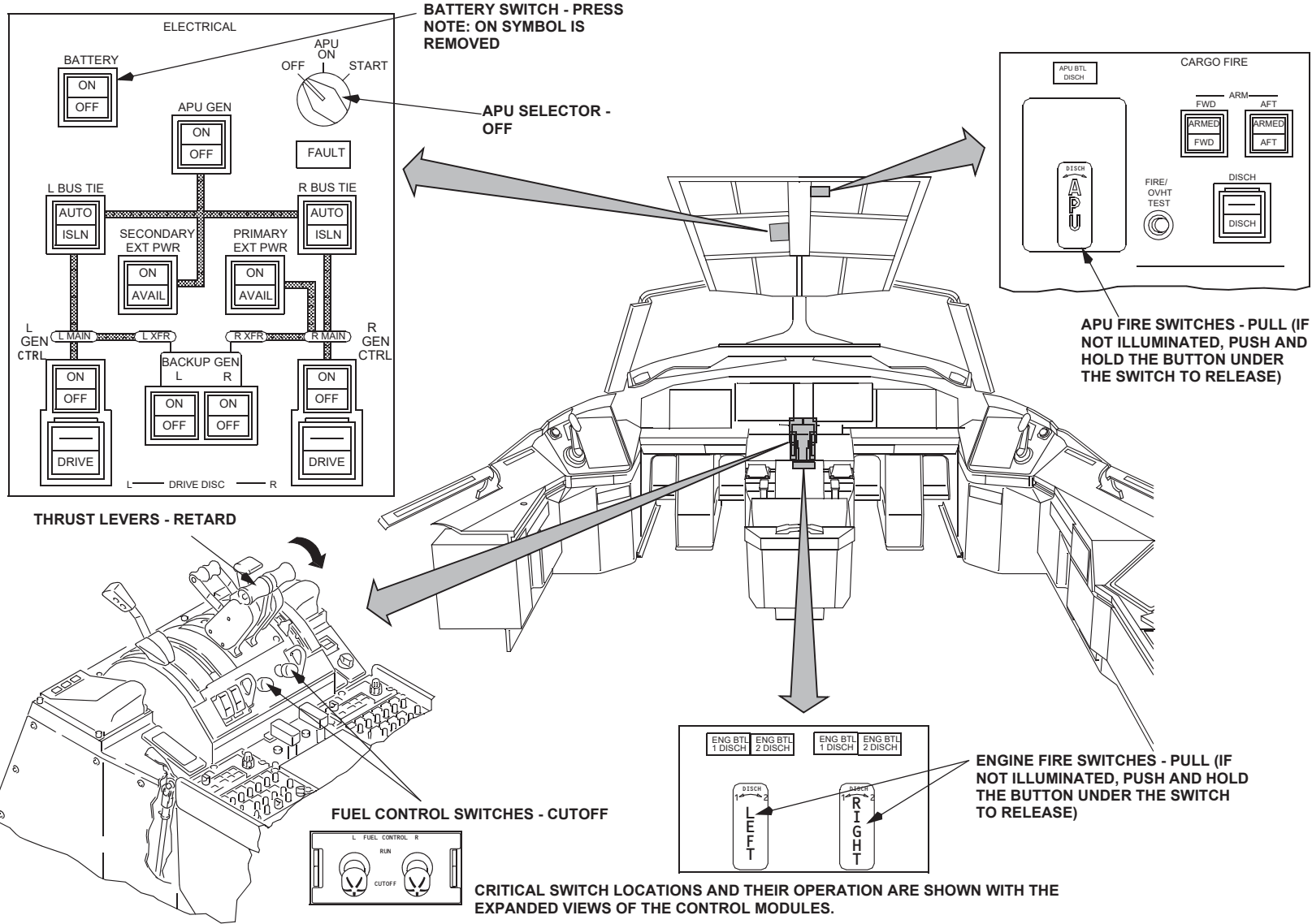
777-8 & 777-9 SERIES

BATTERY LOCATIONS



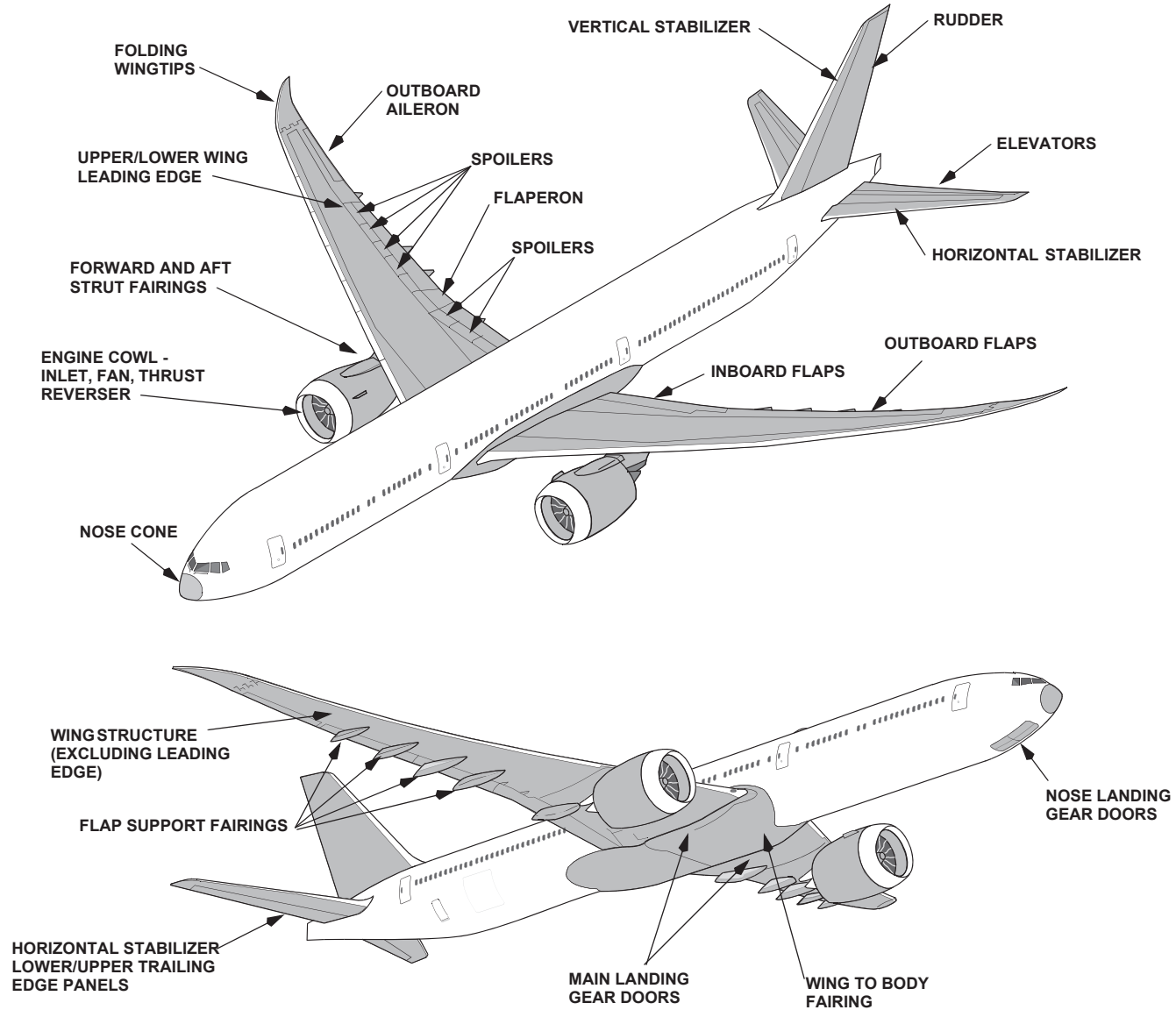
777-8 & 777-9 SERIES

FLIGHT DECK CONTROL SWITCH LOCATIONS



777-8 & 777-9 SERIES

COMPOSITE MATERIALS LOCATIONS



Copyright © Boeing. See title page for details.

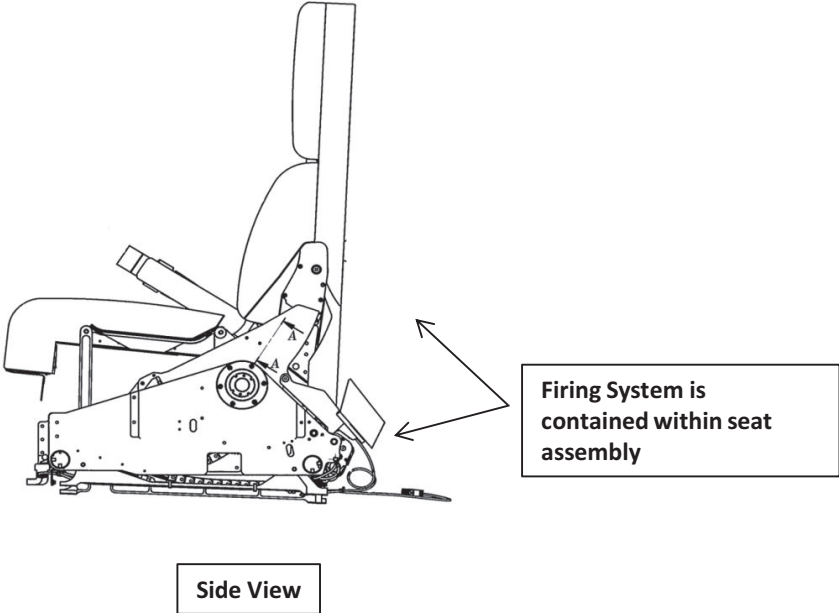
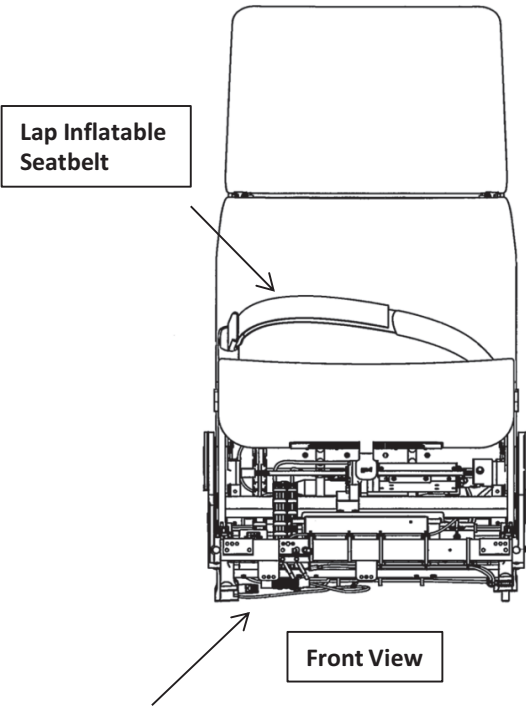
777-8 & 777-9 SERIES

PASSENGER SEATBELT AIRBAGS

Passenger Seatbelt Airbags

NOTE: Some models have optional seatbelt airbags. These seatbelts are noticeably thicker due to the airbag mechanism.

CAUTION: AVOID AREA IN FRONT OF THE UNDEPLOYED AIRBAG SEAT. DO NOT PLACE EQUIPMENT ON OR NEAR THE SEAT, STAND CLEAR OF UN-DEPLOYED AIRBAGS.



Note: Firing system is contained in seat assembly and consists of a high pressure (up to 7,400 psi) compressed gas cylinder (inflator) that is actuated by an independent battery.

WARNING: DO NOT ATTEMPT TO DISABLE THE SYSTEM AND NEVER ASSUME THAT DISCONNECTING POWER WILL DISABLE THE AIRBAG SYSTEM. THIS SHOULD ONLY BE DONE BY PROPERLY TRAINED MECHANICS.